

Fully Air-Conditioned



4601 Newcastle Road, Stockton CA 95215 USA - 388,183 SF

Prologis Stockton 10








DEVELOPMENT HIGHLIGHTS

- ±23,540 SF offices
- 94 dock high doors
 - ±74 Dock Doors equipped with:
 - Dock seals & canopy
 - 40k lbs. hydraulic pit levelers
 - Vehicle Restraints
 - Trailer Lights & Fan
 - Duplex Receptacles
- 4 grade level doors
- 36' clear height
- High skylight ratio
- 100% concrete truck court
- 130' primary and 185' secondary truck court
- 50' x 54' column spacing
- LED lighting @ ±75 FC
- 2,500 amps power
- ESFR fire suppression
- Existing solar system
- Secured truck court
- Guard house with restroom
- Fully insulated and conditioned
- 15 HVLS Ceiling Fans
- ±7" DUCTILECRETE Engineered Slab

Your single-source service for
efficient move-in and operations:
prologisessentials.com

Prologis Stockton 10 - 388,183 SF

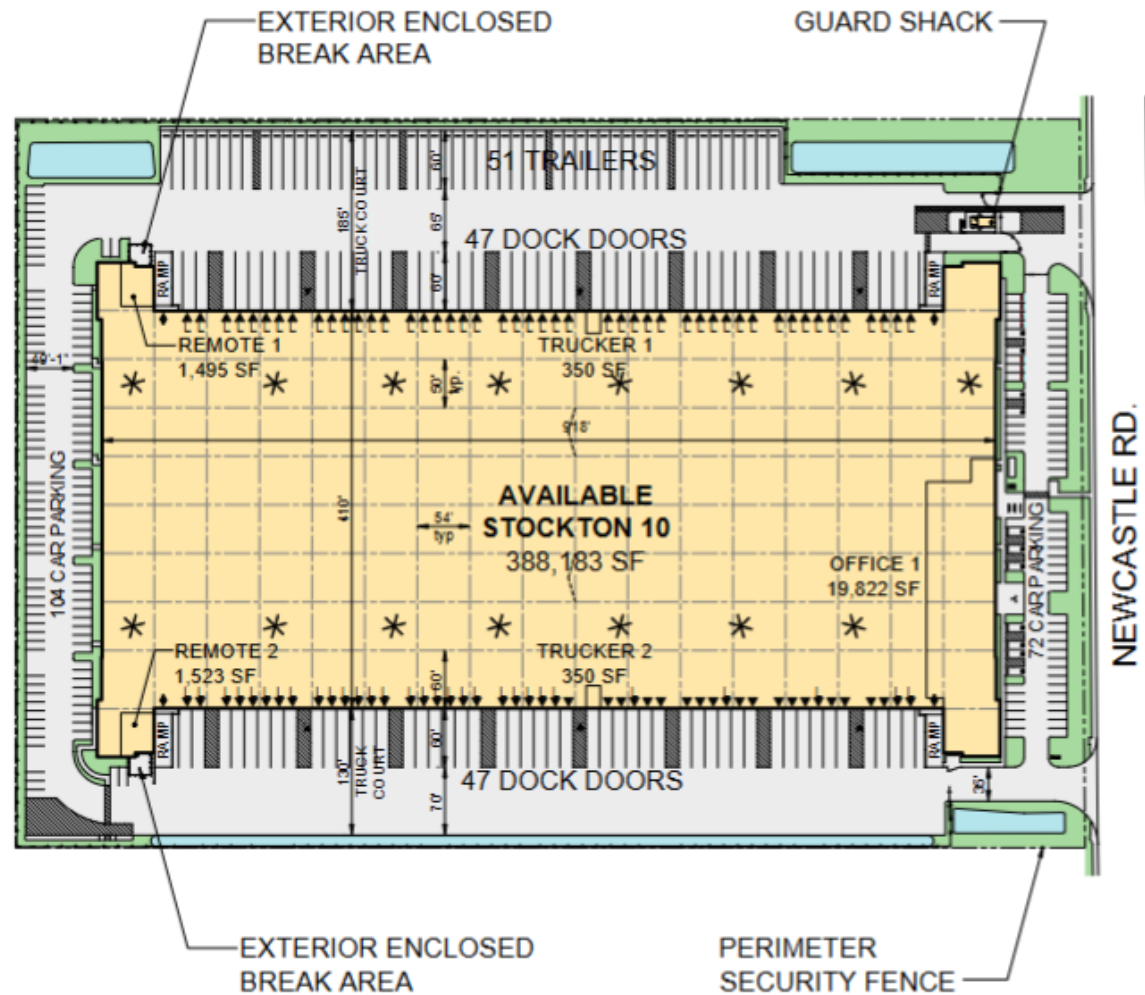
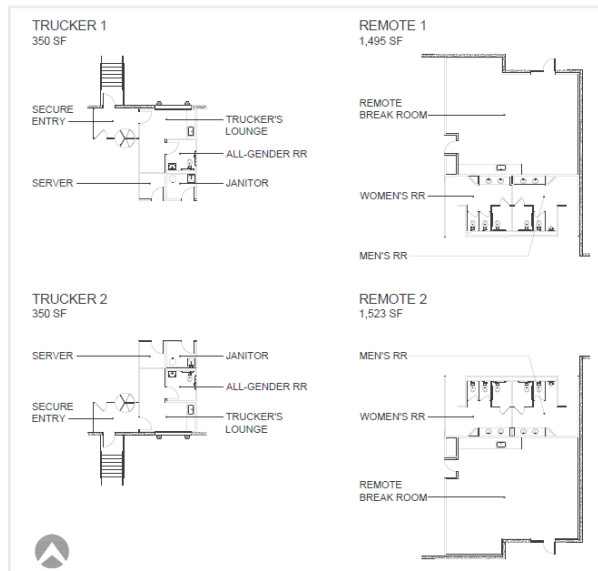
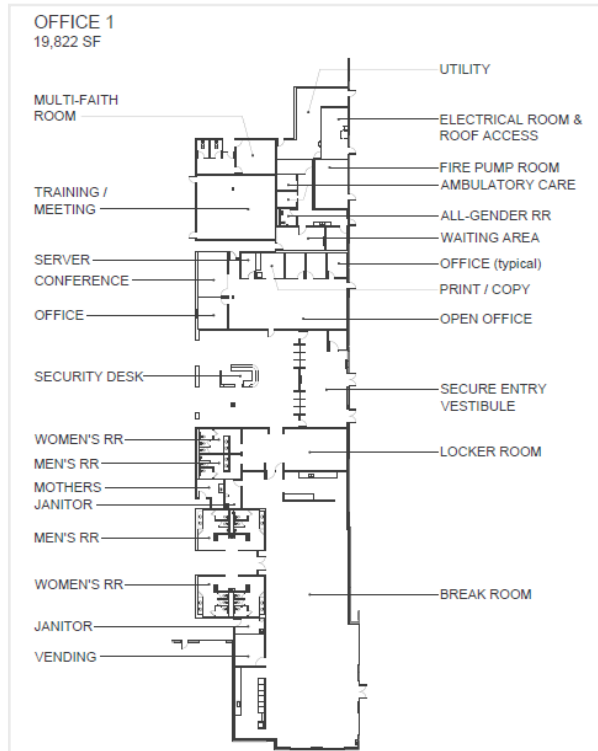
This state-of-the-art facility is strategically located in close proximity to BNSF and UPRR Intermodal terminals with direct access to Highway 99 and Interstate 5.

	 SIZE	 DOCK DOORS	 GRADE DOORS	 TRUCK COURT	 BUILDING DEPTH
Stockton 10	388,183 SF	94	4	130' primary 185' secondary	410'



AVAILABLE NOW

Existing – 388,183 SF



Existing Footprint

- Total footprint: 388,183 SF
- Warehouse: 364,643 SF
- Office: 23,540 SF

