



1805 Foulk Road, Suite A & B
Wilmington, DE 19810

TWO-STORY OFFICE SUITE FOR LEASE



TWO-STORY PROFESSIONAL OFFICE

This 1,800 SF two-story professional office offers both a welcoming client entrance and private workspace upstairs — perfect for firms hosting consultations, closings, or planning sessions.

The space features an architectural spiral staircase, a welcoming reception area, multiple private offices, and convenient on-site parking.

With strong visibility, easy access to major corridors, and nearby amenities, this location is well-suited for legal, insurance, financial, real estate, and consulting users seeking a distinguished business presence.

PROPERTY HIGHLIGHTS

- 1,800 SF two-story professional office
- Architectural spiral staircase feature
- Reception area + multiple private offices
- Conference room / meeting space capability
- Abundant on-site parking
- Private entrance + professional façade
- Excellent signage visibility along Foulk Road
- Quick access to Concord Pike & Naamans Road corridors

DEMOGRAPHICS AT A GLANCE

	1 MILE	3 MILES	5 MILES
Total Population	9,431	74,967	165,520
Total Households	3,594	30,279	69,831
Average HH Income	\$149,621	\$139,096	\$120,554
Average Age	46	44	43



For More Information, Contact:

Dann Gladnick
dgladnick@dsmre.com
302.283.1800 Office
302.343.1865 Cell

DSM Commercial
Real Estate Services
3304 Old Capitol Trail
Wilmington, DE 19808
dsmre.com



1805 Foulk Road, Suite A & B
Wilmington, DE 19810

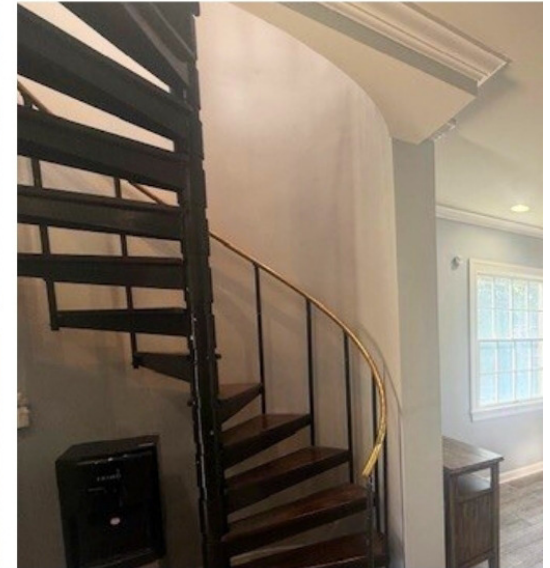
TWO-STORY OFFICE SUITE FOR LEASE



For More Information, Contact:

Dann Gladnick
dgladnick@dsmre.com
302.283.1800 Office
302.343.1865 Cell

DSM Commercial
Real Estate Services
3304 Old Capitol Trail
Wilmington, DE 19808
dsmre.com



Ideal For

Attorneys & Estate Planning Firms • Insurance Agencies • Real Estate Brokerages / Title Companies • CPAs & Wealth Advisors • Marketing / Consulting Practices • Counseling / Therapy Offices • Architecture / Design Firms

For More Information, Contact:

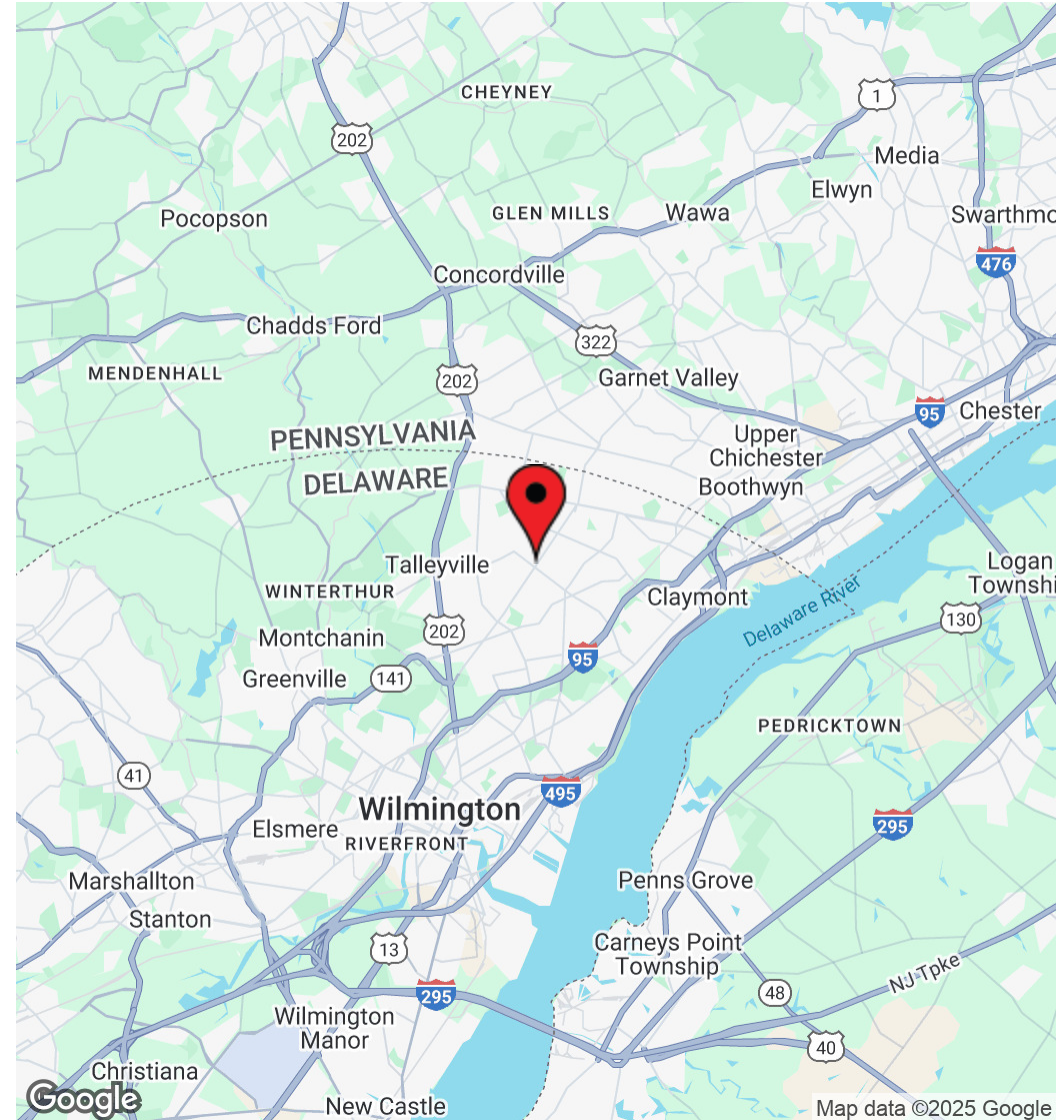
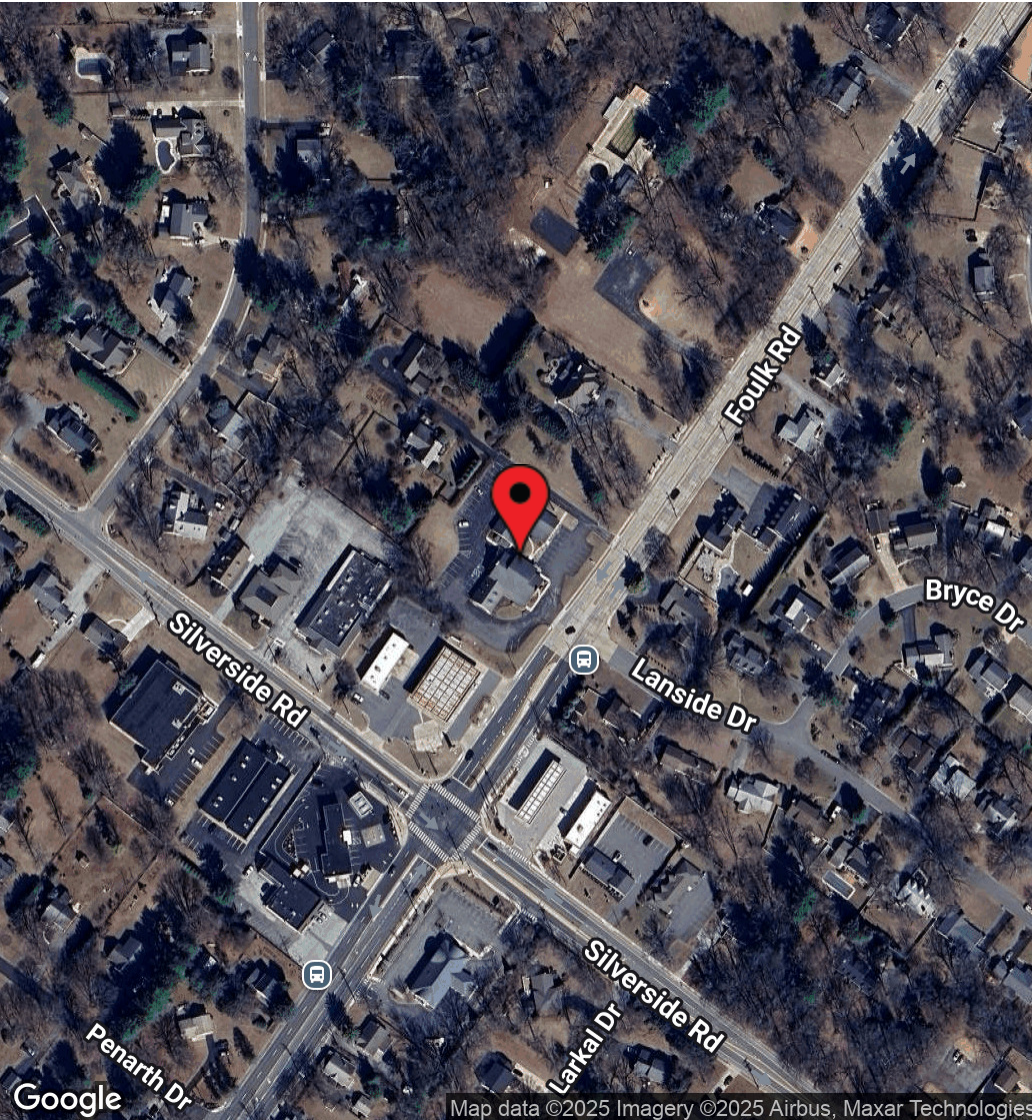
Dann Gladnick
dgladnick@dsmre.com
302.283.1800 Office
302.343.1865 Cell

DSM Commercial
Real Estate Services
3304 Old Capitol Trail
Wilmington, DE 19808
dsmre.com



1805 Foulk Road, Suite A & B
Wilmington, DE 19810

TWO-STORY OFFICE SUITE FOR LEASE



For More Information, Contact:

Dann Gladnick
dgladnick@dsmre.com
302.283.1800 Office
302.343.1865 Cell

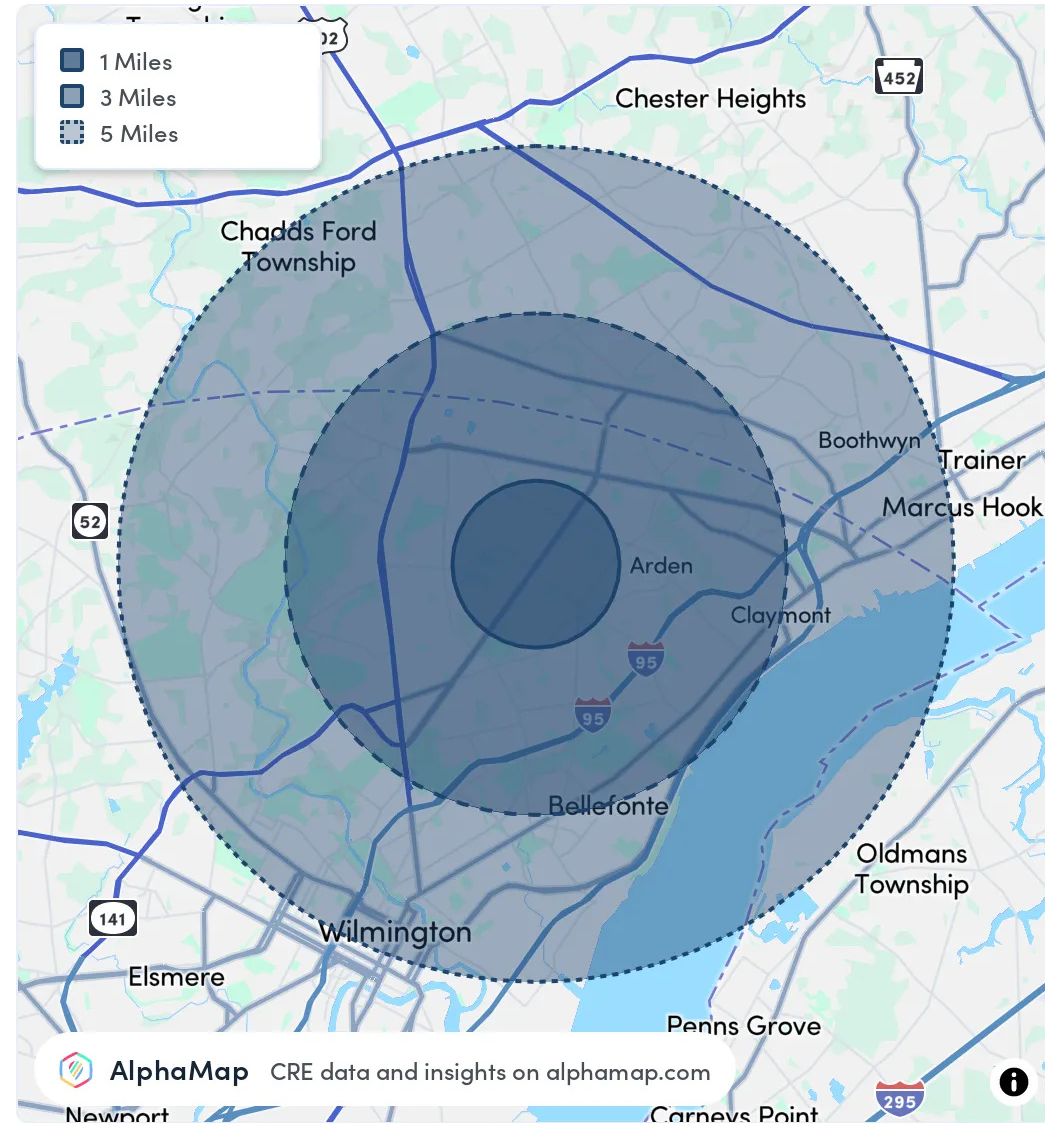
DSM Commercial
Real Estate Services
3304 Old Capitol Trail
Wilmington, DE 19808
dsmre.com

1805 Foulk Road, Suite A & B
Wilmington, DE 19810

TWO-STORY OFFICE SUITE FOR LEASE

POPULATION	1 MILE	3 MILES	5 MILES
Total Population	9,431	74,967	165,520
Average Age	46	44	43
Average Age (Male)	45	43	42
Average Age (Female)	48	46	44
HOUSEHOLD & INCOME	1 MILE	3 MILES	5 MILES
Total Households	3,594	30,279	69,831
Persons per HH	2.6	2.5	2.4
Average HH Income	\$149,621	\$139,096	\$120,554
Average House Value	\$480,069	\$450,824	\$396,978
Per Capita Income	\$57,546	\$55,638	\$50,230

Map and demographics data derived from AlphaMap



For More Information, Contact:

Dann Gladnick
dgladnick@dsmre.com
302.283.1800 Office
302.343.1865 Cell

DSM Commercial
Real Estate Services
3304 Old Capitol Trail
Wilmington, DE 19808
dsmre.com