

TURNKEY OFFICE CONDO FOR SALE

5404 HOOVER BLVD., STE.8 TAMPA, FL 33634

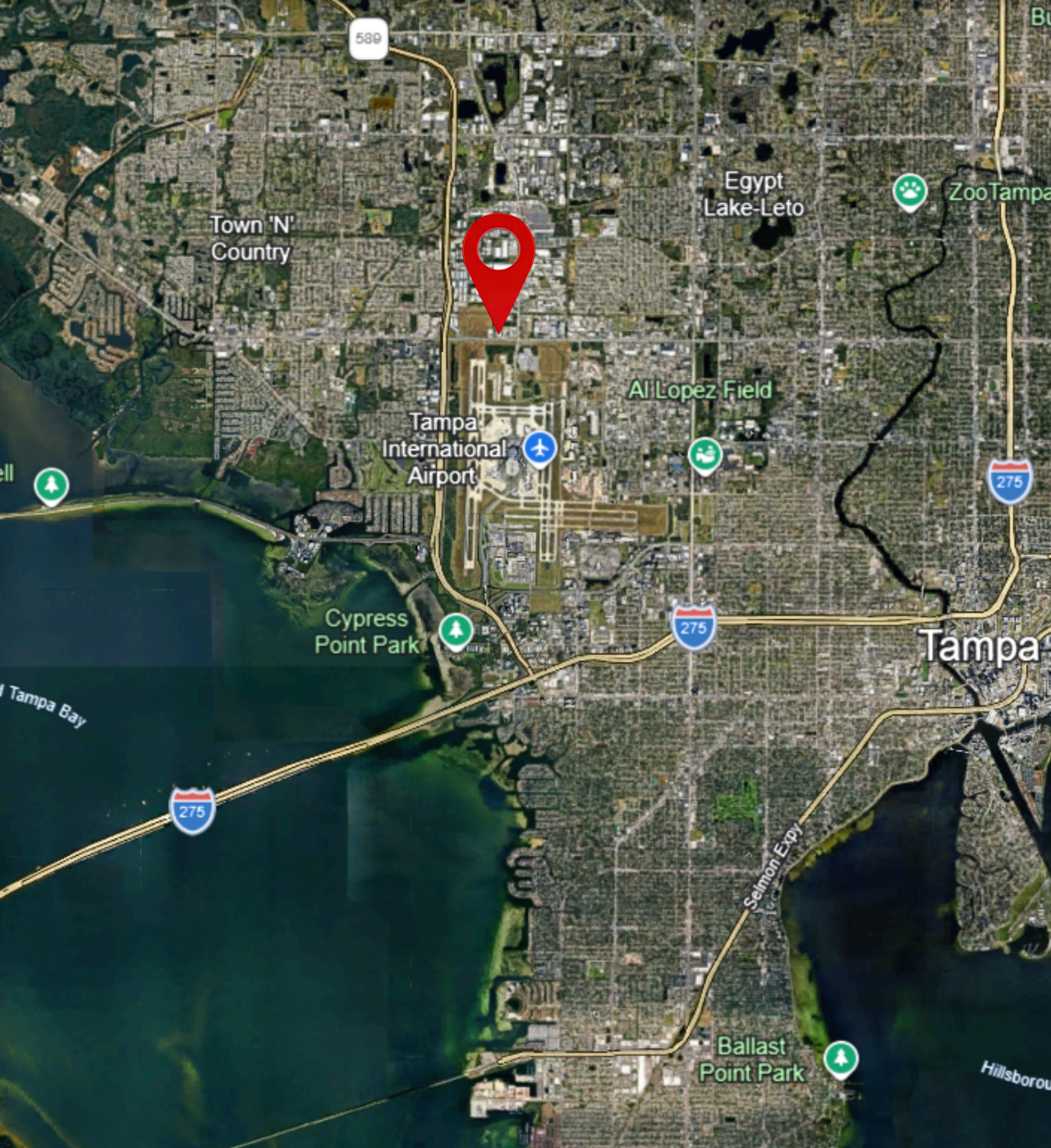
ASKING PRICE: \$359,000

FOR SALE SQUARE FOOTAGE: 1,080± SF

HIGHLIGHTS:

- 1,080± SF of turnkey space
- Open Layout + Conference Room
- Flexible Floorplan
- Kitchenette/Breakroom + Private Restroom
- Zoned SPI-AP-4 (Flexible Uses)





DEMOGRAPHICS

Population

1 Mile: 2,970

3 Miles: 90,485

5 Miles: 268,999

Total Households

1 Mile: 1,073

3 Miles: 36,410

5 Miles: 111,704

Median Household Income

1 Mile: \$57,590

3 Miles: \$66,693

5 Miles: \$73,167

Total Employees

1 Mile: 1,446

3 Miles: 50,388

5 Miles: 148,226

OVERVIEW

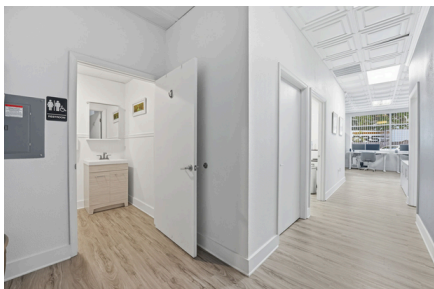
Office condo available for sale in the Stars and Stripes Commerce Park, located in one of Tampa's most accessible commercial corridors, with immediate connectivity to the Veterans Expressway, I-275, and Tampa International Airport.

This 1,080± SF suite offers a clean, modern interior with a flexible layout. The space is designed with an open work area that can accommodate multiple workstations, along with a separate conference room for meetings & team collaboration. A kitchen and private restroom are also included, creating a practical and self-sufficient office setup.

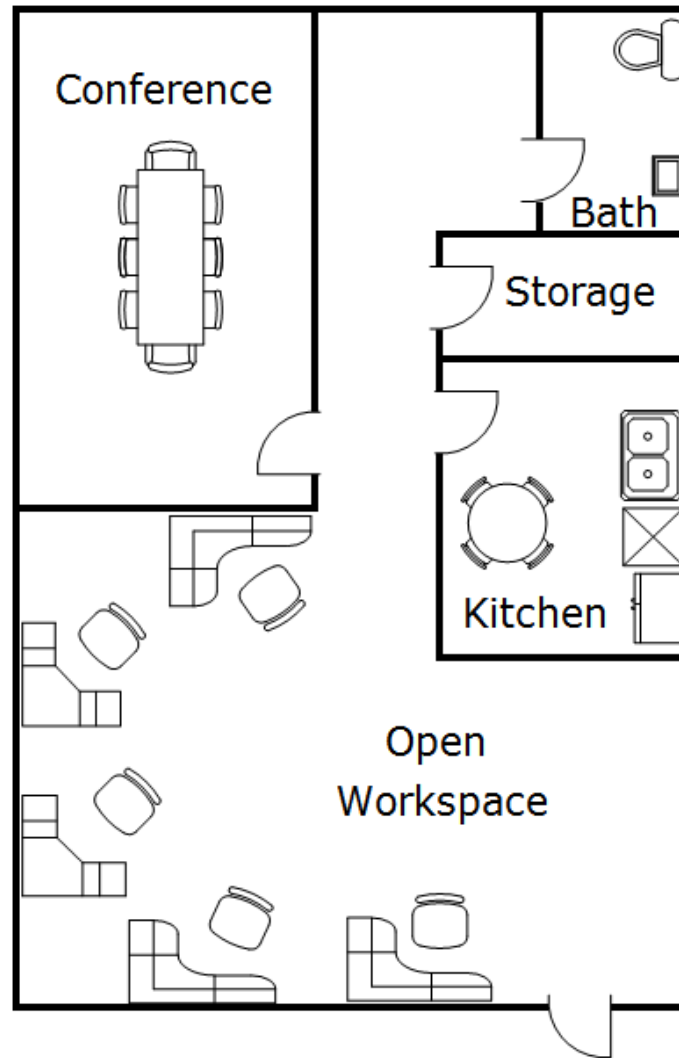
Interior updates include newer flooring and fresh paint, and the property also benefits from a recently replaced HVAC system (2023).

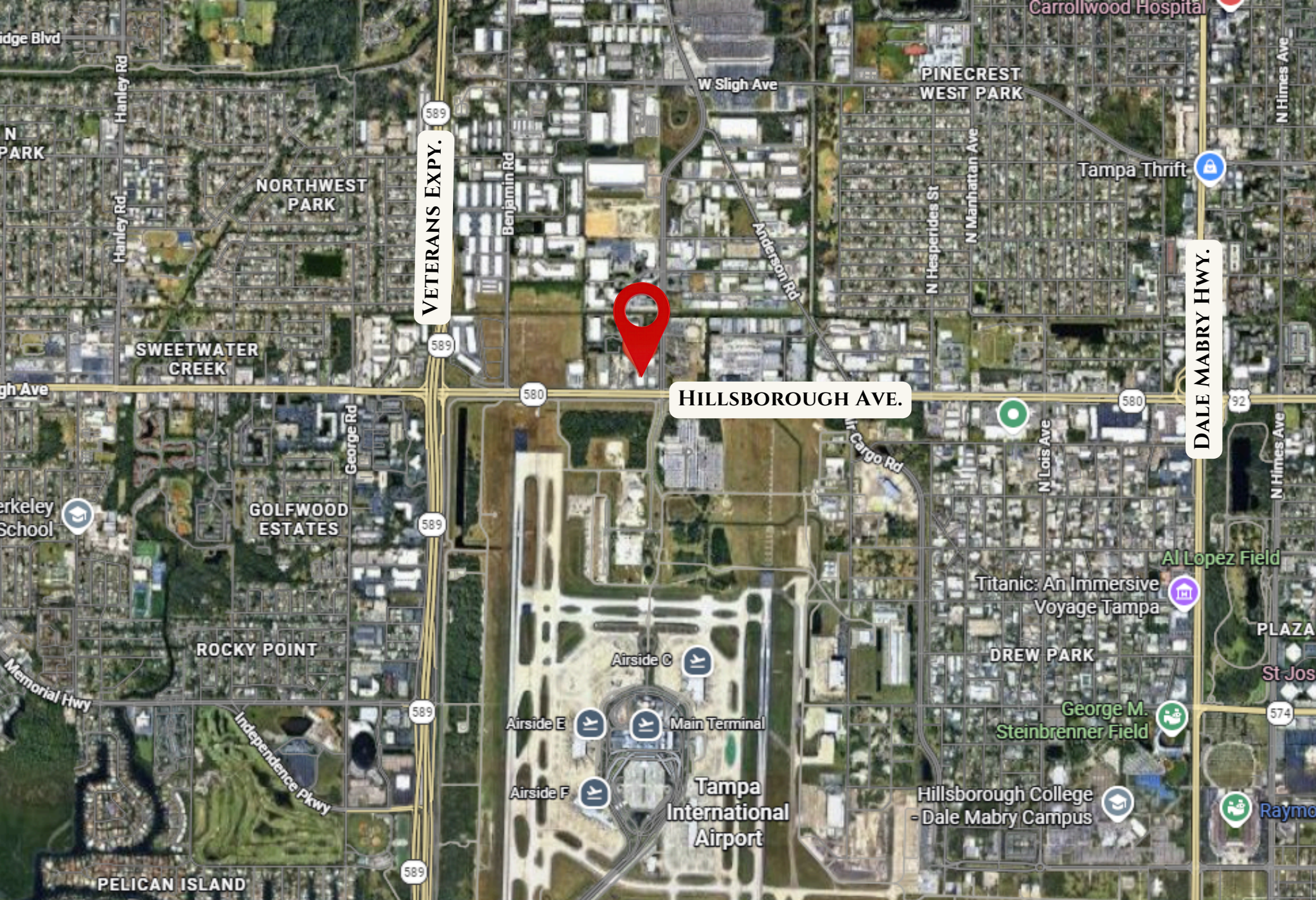
The property is located in a well-maintained office park offering ample surface parking and easy access for employees and visitors. The owner is open to including some of the furniture as part of a sale.

Zoned SPI-AP-4, the space supports a wide range of commercial uses including professional office space, medical-related uses, creative services, and other business operations, making it a strong fit for both owner-users and investors.



FLOOR PLAN





HILLSBOROUGH AVE.

5404 HOOVER BLVD., STE. 8, TAMPA, FL 33634

EXCLUSIVELY LISTED BY



SYDNEY AVOLT
REAL ESTATE ADVISOR - ELITE REALTY ADVISORS
727-403-7418
SAVOLT@SOUTHCEDARRE.COM

With a diverse background spanning marketing, valuation, and real estate analysis, Sydney brings a well-rounded perspective on the Tampa Bay market to every client relationship. Her experience across multiple facets of the industry allows her to approach each opportunity with creative strategy, analytical precision, and a deep understanding of local market dynamics.



JAMES LASCARA
TEAM LEAD - ELITE REALTY ADVISORS
JAMES@LASCARARE.COM

James Lascara is a real estate sales associate, investor, developer, and business leader based in the Tampa Bay area. He specializes in residential & commercial value-add opportunities, land acquisition & entitlement, multifamily properties, and has a seasoned background working with investment-focused buyers and sellers, conventional and VA buyers acquiring multiple units, and multi 8-figures of new construction and development projects.

Conditions of Offering – South Cedar Real Estate, Inc. or (“SCRE”) has been engaged by the seller to market the property for sale. Information concerning the property described herein has been obtained from sources other than SCRE, and neither owner nor SCRE, nor their respective equity holders, officers, directors, employees and agents makes any representations or warranties, express or implied, as to the accuracy or completeness of such information. Any and all reference to age, square footage, income, expenses and any other property specific information are approximate. The information is based in part upon information supplied by the Owner and in part upon financial information obtained from sources the Owner deems reliable. Neither owner, nor their officers, employees, or real estate agents make any representation or warranty, express or implied, as to the accuracy or completeness of this Offering Memorandum, or any of its content, and no legal liability is assumed or shall be implied with respect thereto. Prospective purchasers should make their own projections and form their own conclusions without reliance upon the material contained herein. SCRE and Seller disclaim any liability that may be based upon or related to the information contained herein. All prospective purchasers should conduct their own thorough due diligence investigation of each of these areas with the assistance of their accounting, construction, and legal professionals, and seek expert opinions regarding volatile market conditions. The Property may be withdrawn without notice. If the recipient of this information has signed a confidentiality agreement regarding this matter, this information is subject to the terms of that agreement. Seller is a Licensed Broker in the State of Florida.