



4732 STONE DRIVE

TUCKER, GA
30084

Industrial Property For Lease
48,941+/- SF Warehouse

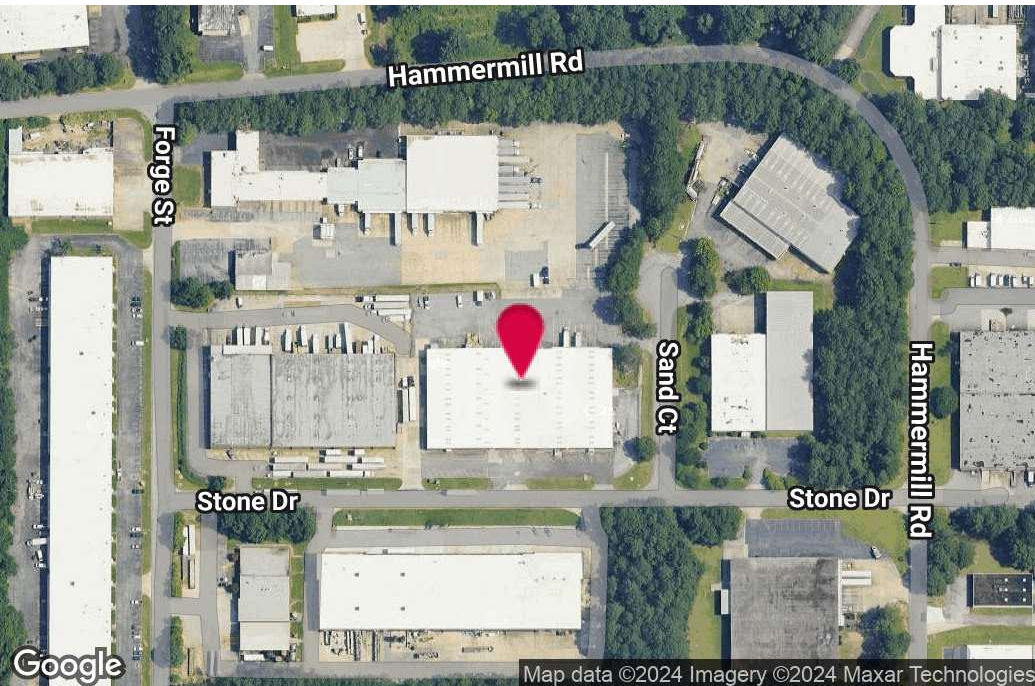
BRIAN BRATTON, SIOR
Senior Vice President
404.942.2028
bbratton@kingindustrial.com

STEVE RATCHFORD, SIOR, CCIM
Senior Vice President
404.942.2003
sratchford@kingindustrial.com

King Industrial
Realty, Inc.

Industrial • Commercial • Investment
404.942.2000 | kingindustrial.com

FOR LEASE
48,941+/- SF
WAREHOUSE



PROPERTY HIGHLIGHTS

- 2,320+/- SF Office Space
- 12 Dock Doors
- 2 Drive-in Doors
- 18' - 22' Clear Height
- Sprinklered
- 600 Amp / 480 Volt Power
- 161' Building Depth
- 41' x 34' Colum Spacing

OFFERING SUMMARY

Lot Size:	2.66 Acres
Building Size:	48,941 SF
Zoning:	M-1

BRIAN BRATTON, SIOR

Senior Vice President

404.942.2028

bbratton@kingindustrial.com

STEVE RATCHFORD, SIOR, CCIM

Senior Vice President

404.942.2003

sratchford@kingindustrial.com

Every effort has been made to provide accurate information, but no liability is assumed for errors or omissions.



Industrial • Commercial • Investment
404.942.2000 | kingindustrial.com

WAREHOUSE PHOTOS



BRIAN BRATTON, SIOR

Senior Vice President

404.942.2028

bbratton@kingindustrial.com

STEVE RATCHFORD, SIOR, CCIM

Senior Vice President

404.942.2003

sratchford@kingindustrial.com

Every effort has been made to provide accurate information, but no liability is assumed for errors or omissions.

King Industrial
Realty, Inc. **CORFAC**
INTERNATIONAL

Industrial • Commercial • Investment
404.942.2000 | kingindustrial.com

INTERIOR PHOTOS



BRIAN BRATTON, SIOR

Senior Vice President

404.942.2028

bbratton@kingindustrial.com

STEVE RATCHFORD, SIOR, CCIM

Senior Vice President

404.942.2003

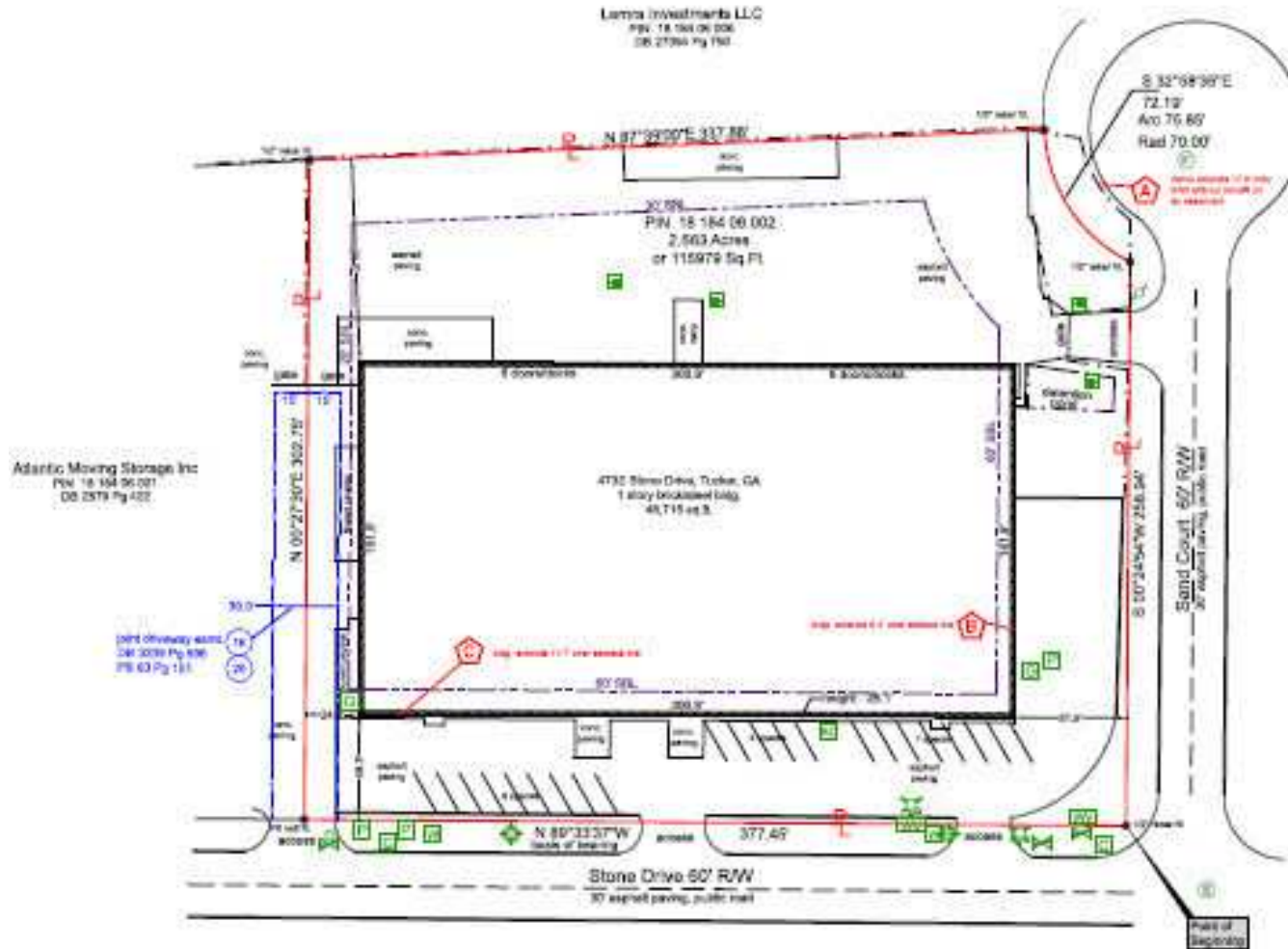
sratchford@kingindustrial.com

Every effort has been made to provide accurate information, but no liability is assumed for errors or omissions.

King Industrial
Realty, Inc. **CORFAC**
INTERNATIONAL

Industrial • Commercial • Investment
404.942.2000 | kingindustrial.com

SURVEY



BRIAN BRATTON, SIOR

Senior Vice President
404.942.2028

bbratton@kingindustrial.com

STEVE RATCHFORD, SIOR, CCIM

Senior Vice President
404.942.2003

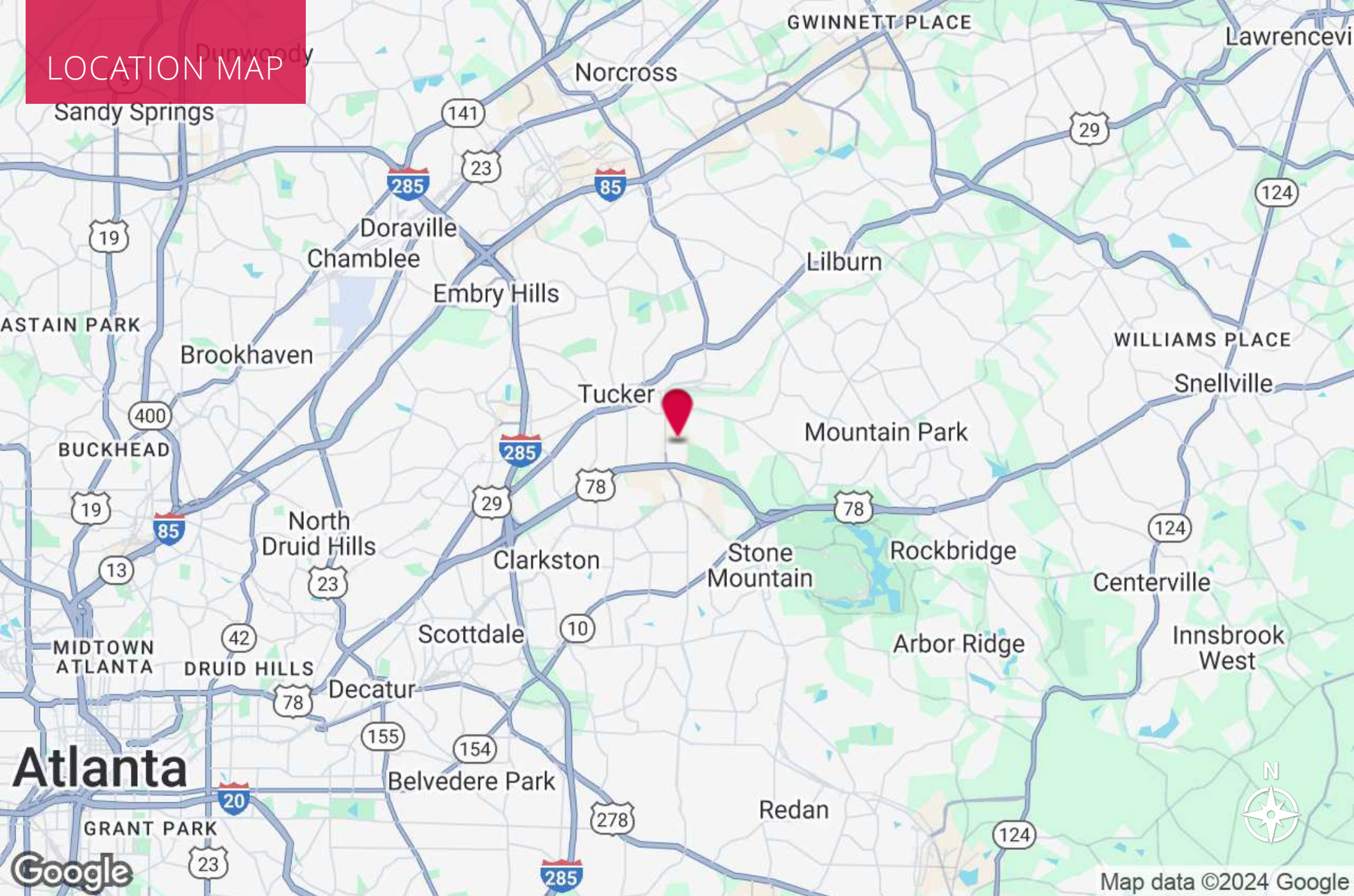
sratchford@kingindustrial.com

Every effort has been made to provide accurate information, but no liability is assumed for errors or omissions.

King Industrial Realty, Inc. **CORFAC** INTERNATIONAL

Industrial • Commercial • Investment
404.942.2000 | kingindustrial.com

LOCATION MAP



BRIAN BRATTON, SIOR

Senior Vice President

404.942.2028

bbratton@kingindustrial.com

Every effort has been made to provide accurate information, but no liability is assumed for errors or omissions.

STEVE RATCHFORD, SIOR, CCIM

Senior Vice President

404.942.2003

sratchford@kingindustrial.com

king Industrial Realty, Inc. **CORFAC** INTERNATIONAL

Industrial • Commercial • Investment
404.942.2000 | kingindustrial.com

EXCLUSIVELY LISTED BY:

BRIAN BRATTON, SIOR

Senior Vice President
bbratton@kingindustrial.com
404.942.2028

STEVE RATCHFORD, SIOR, CCIM

Senior Vice President
sratchford@kingindustrial.com
404.942.2003

King Industrial
Realty, Inc.

Industrial • Commercial • Investment
404.942.2000 | kingindustrial.com