 **JLL** SEE A BRIGHTER WAY

# For lease

SouthPark Center  
8517 SouthPark Circle  
Orlando, FL 32819

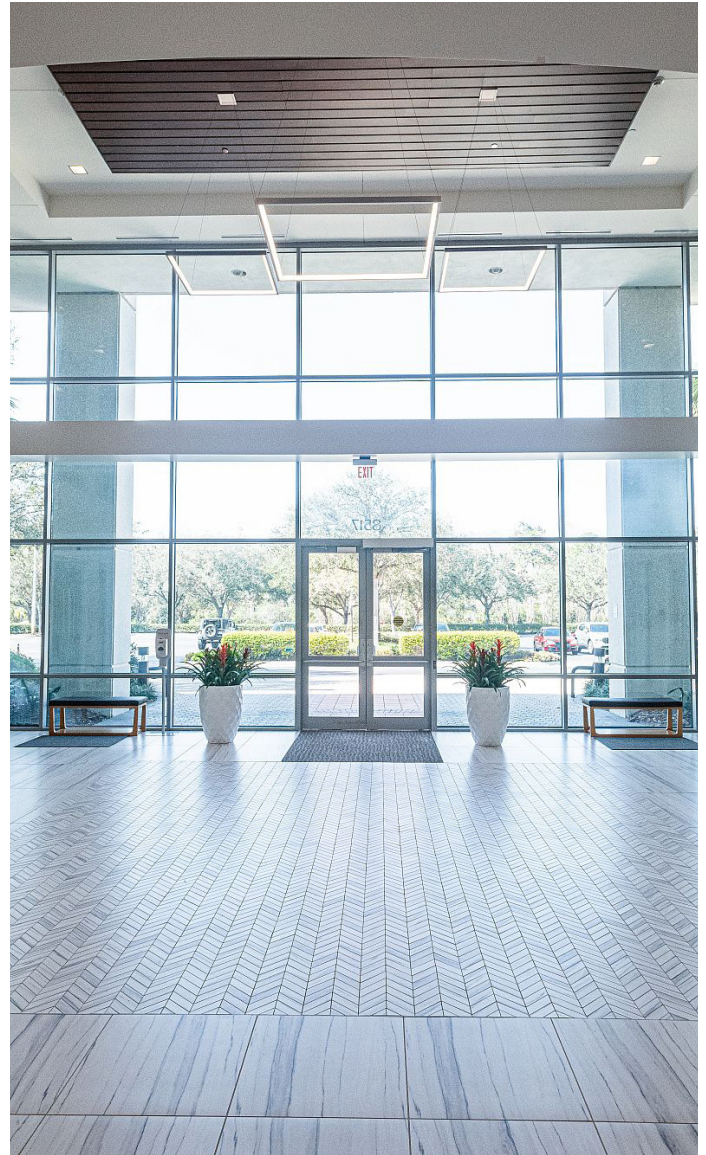
[jll.com](http://jll.com)

# Introduction

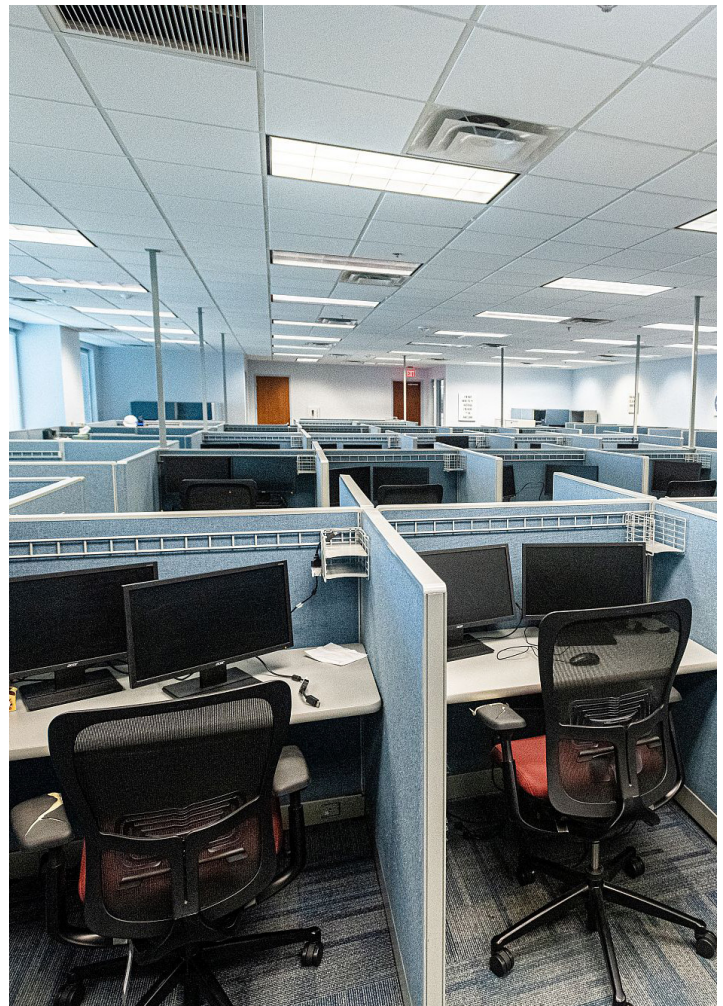
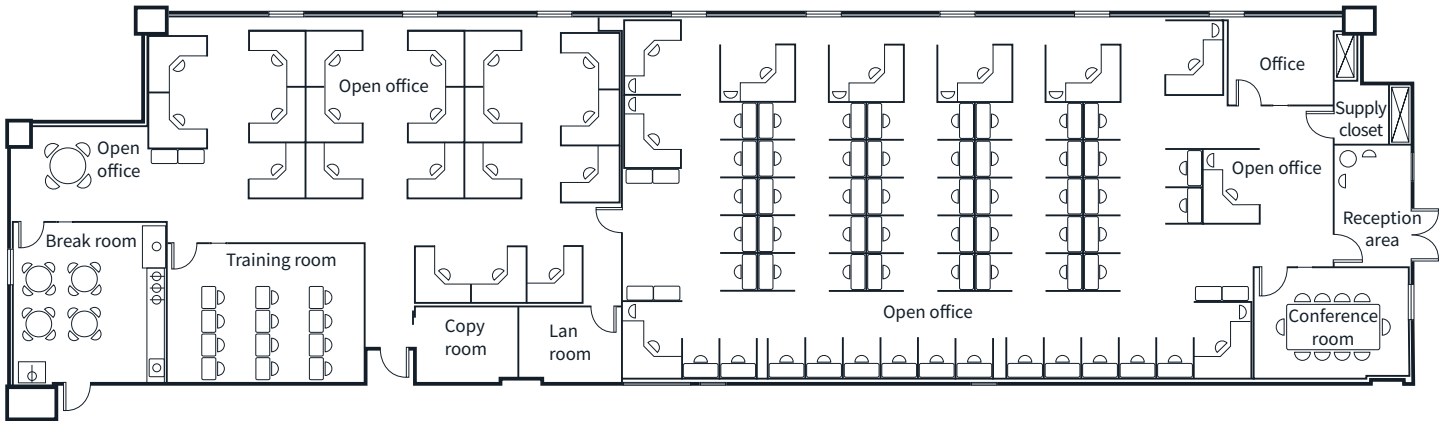
This ±147,322 SF office building sits in Southpark Center, a premier office park located in South Orlando. The property boasts the ideal location, benefiting from quick access to major thoroughfares and close proximity to popular attractions, shopping, and restaurants. Tenant amenities include outdoor patio seating, fitness center and nature trail access, a food truck court, and a nature's table café in the adjacent building.

## Property highlights

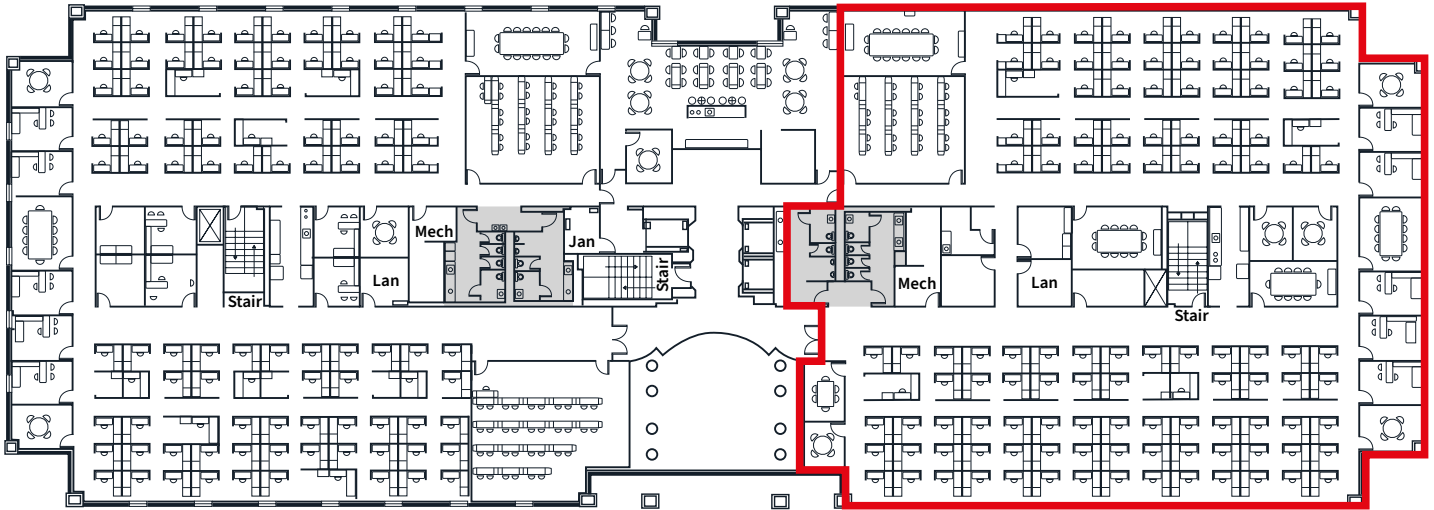
- Quick access to major roads
- Covered parking
- Outdoor patio seating with games
- Food truck court with shaded seating
- 5.5/1,000 SF parking ratio
- Nature's table cafe in adjacent building
- Car charging stations
- Lynx bus stop in front of building
- Fitness center and nature trail access
- On-site property management



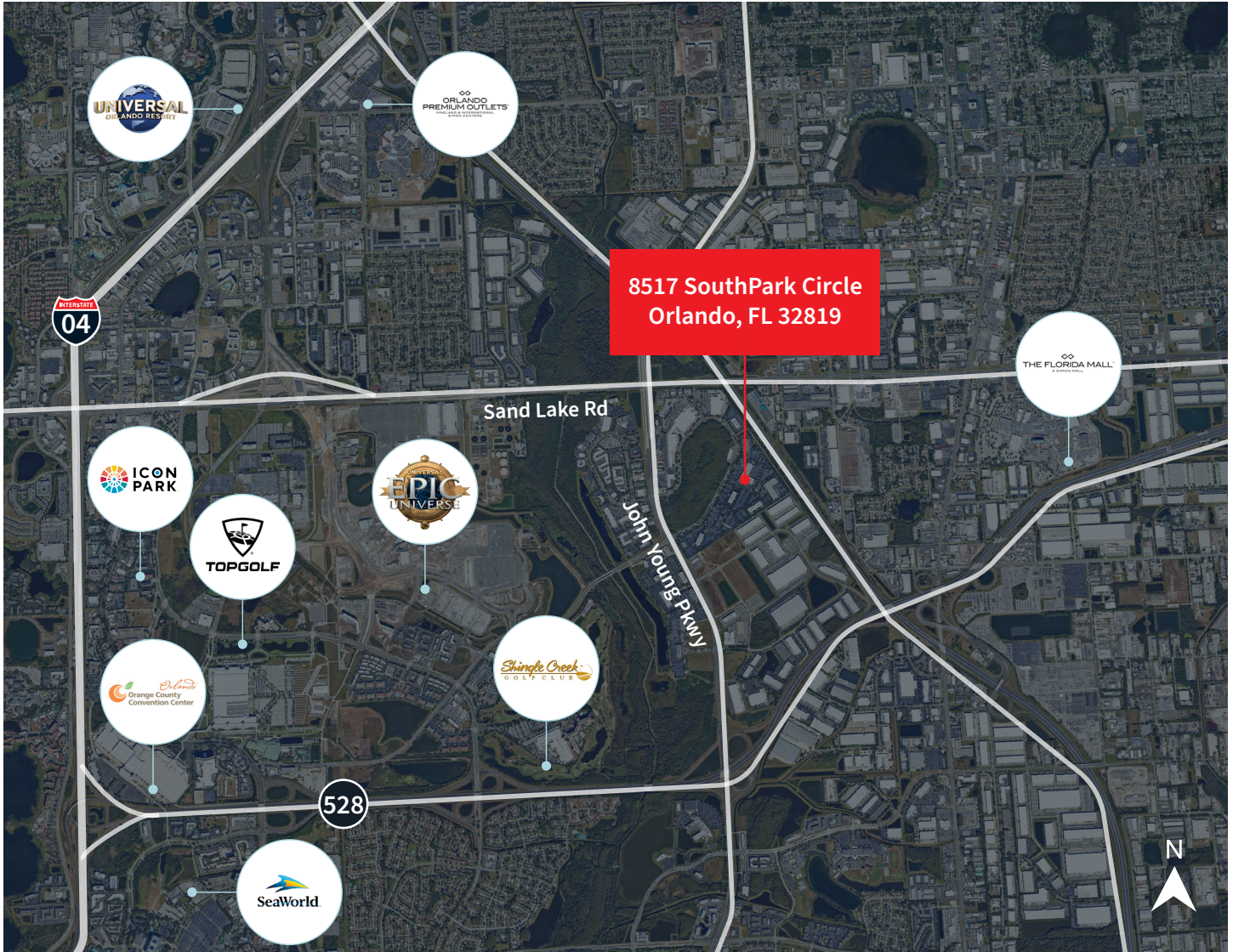
# Floorplans SUITE 140 | ±6,987 SF



# Floorplans SUITE 250 | ±15,360 SF



# Drive time demographics (15 minutes)



If you would like more information about this offering, please get in touch.

**Leasing contacts**

**Nathan Eissler, CCIM, SIOR**

*Executive Vice President*

[nathan.eissler@jll.com](mailto:nathan.eissler@jll.com)