



PROPERTY HIGHLIGHTS

- Two Parcels
- Corner Lot
- High Visibility
- Multi-Family Opportunity
- TIF Eligible
- Central Business District
- Lot Size: 140' x 132'

JASON PESOLA

Cell: 630-486-7321
jason@thepesolagroup.com

INTEGRA COMMERCIAL

1960 Springbrook Square Dr #100
Naperville, IL 60564

FOR SALE - \$399,000 - GREAT COMMERCIAL OPPORTUNITY

155 S. Madison St., Oswego, IL 60543

PART OF OSWEGO BUSINESS DISTRICT



This prime lot is ideal for a multitude of business ventures including retail, restaurant, multi-family, or medical/dental offices. Comprised of two parcels, this centrally located gem sits right in the heart of the bustling Downtown Oswego Business District.

APN/TAXES: 03-17-354-006 / \$1,887.66

APN/TAXES: 03-17-354-007 / \$1,887.66

PROPERTY OVERVIEW

Positioned on a corner lot, your business will receive maximum exposure to passing foot and vehicle traffic. With a generous lot size measuring 140'x132', you have ample space to design and construct your visionary venture.

Moreover, this property presents a lucrative commercial opportunity with TIF eligibility, offering potential incentives for development. Whether you're looking to establish a new enterprise or expand your existing business, this property provides the perfect canvas for success. Don't miss out on the chance to elevate your business in the vibrant heart of Downtown Oswego!



JASON PESOLA

Cell: 630-486-7321
jason@thepesolagroup.com

INTEGRA
COMMERCIAL
THE PESOLA GROUP

1960 Springbrook Square Dr #100
Naperville, IL 60564

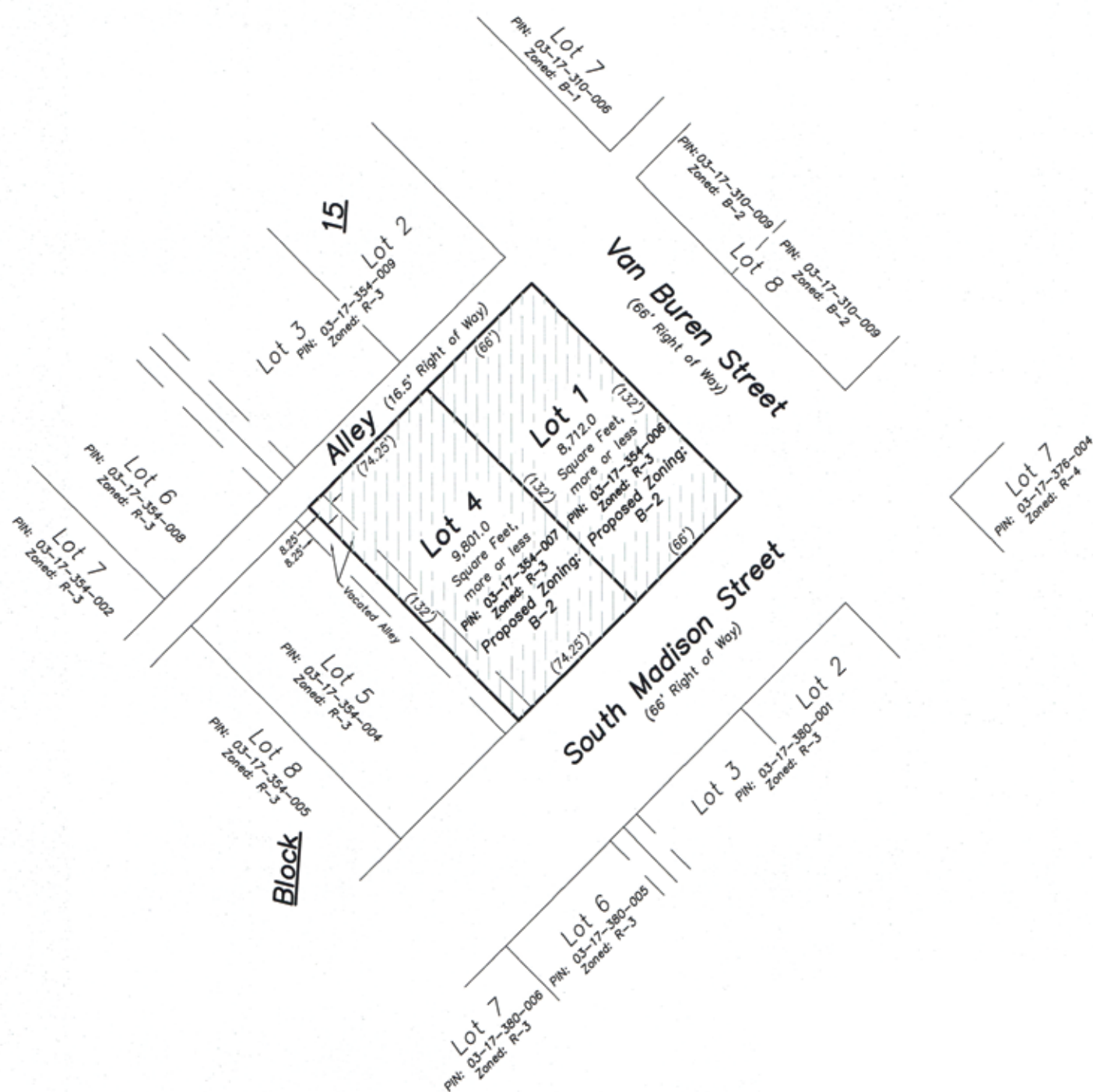
JASON PESOLA

Cell: 630-486-7321

jason@thepesolagroup.com

INTEGRA
COMMERCIAL
THE PESOLA GROUP

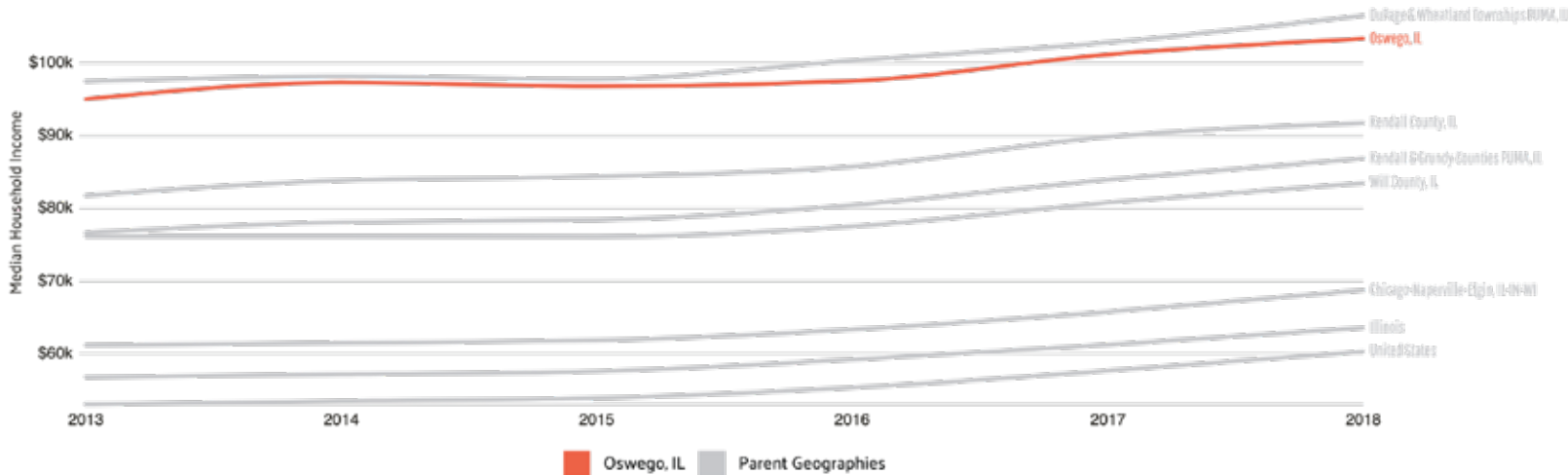
1960 Springbrook Square Dr #100
Naperville, IL 60564



OSWEGO ILLINOIS DEMOGRAPHICS

155 S MADISON ST., OSWEGO, IL

MEDIAN HOUSEHOLD INCOME



population
34,383
1.85% 1-year growth

median property value
\$239,800
2.52-% 1-year growth

number of employees
18,679
3.57% 1-year DECLINE

poverty rate
1.23%

median age
36.4

median household income
\$103,352
2.14% 1-year growth

EMPLOYMENT BY OCCUPATION

Total: 18.7k



<https://datausa.io/profile/geo/oswego-il>

JASON PESOLA

Cell: 630-486-7321
jason@thepesolagroup.com

INTEGRA
COMMERCIAL
THE PESOLA GROUP

1960 Springbrook Square Dr #100
Naperville, IL 60564