

For Lease 300 S. 4th Street

TOWER 300



NEWMARK

BARKER
PACIFIC
GROUP

For more information:

Mike Tabeek, SIOR, CCIM

Senior Managing Director

t 702-405-1750

mike.tabeek@nmrk.com

NV RE Lic. #B.0145775

Larry Singer

Senior Managing Director

t 702-405-1730

larry.singer@nmrk.com

NV RE Lic. #BS.0028687

Thomas Olsen

Associate

t 702-405-1714

thomas.olsen@nmrk.com

NV RE Lic. #S.0200270

FOR LEASE

300 S. 4th Street

Las Vegas, NV



NEWMARK

BARKER
PACIFIC
GROUP

Class	A
Building Size	16 stories, 270,254 SF
Range of Availability	757 SF - 16,670 SF
Max. Contiguous SF	52,588 SF
Parking	7-Story Attached Garage, 2:1,000
Year Built Renovated	1975 2004 2022
Internet	Fiber, Cox or Century Link
LEED Certification	Gold
ENERGY STAR	Certified
Lease Rate per SF	\$2.35
Lease Type	Full Service Gross (FSG)

HIGHLIGHTS

Tower 300 stands out as a distinguished landmark office building located in the vibrant center of Downtown Las Vegas. Encircled by a range of governmental buildings, including local, state, and federal courthouses, as well as Las Vegas City Hall, it holds a prestigious position. Moreover, it's just a short walk from the globally renowned tourist hotspot, Fremont Street, known for its distinctive dining, entertainment options, and shopping outlets. Thanks to its prime location, conveniently reachable via major highways like I-15, I-95, and I-515, Tower 300 remains an essential fixture in the prime Class A office space market.

THE LOWEST RATES

This newly renovated, premiere office building offers the lowest rates at just \$2.35 / SF (FSG).

BUILT TO SUIT OR MOVE-IN READY

Customize your space with generous tenant Improvements or move-in immediately.

ON-SITE AMENITIES:

Bad Owl Coffee Roasters

Bank of America

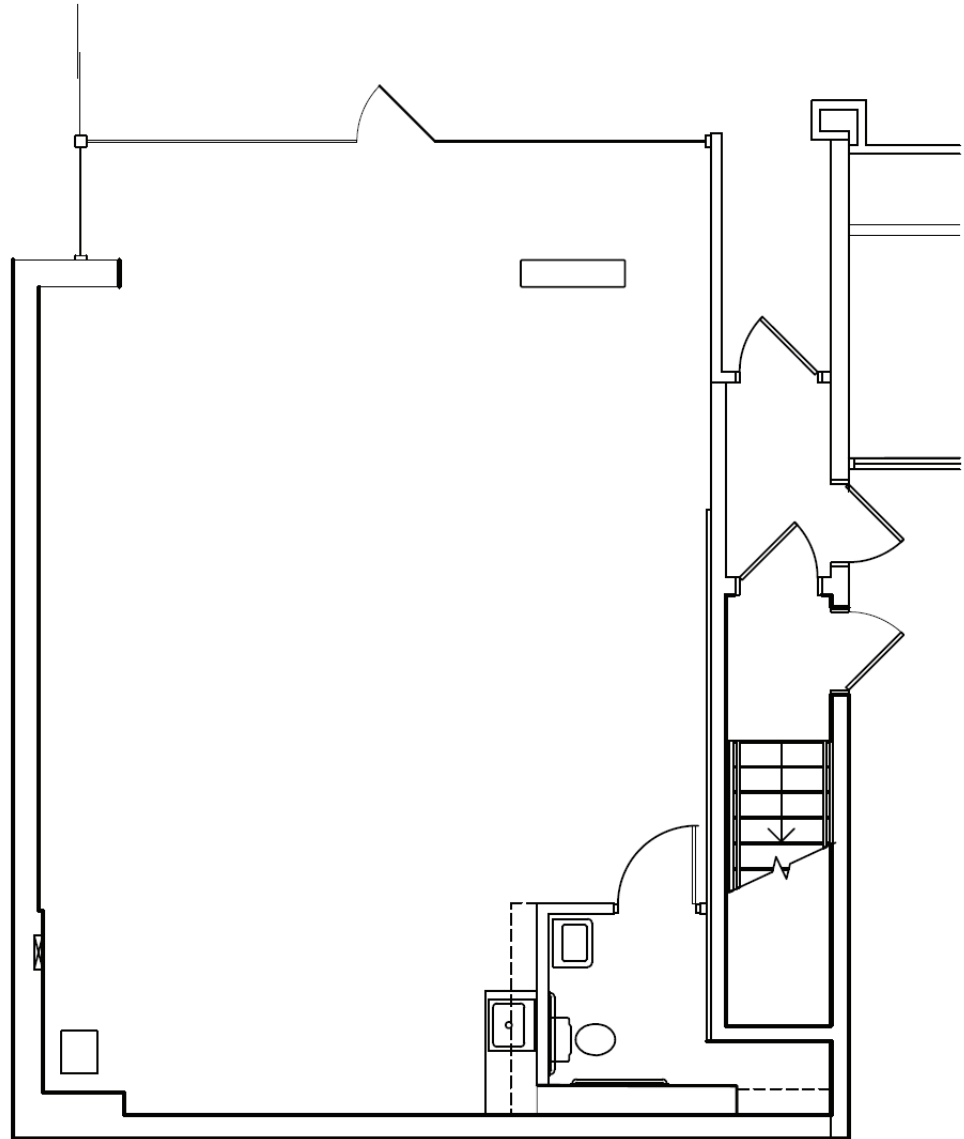
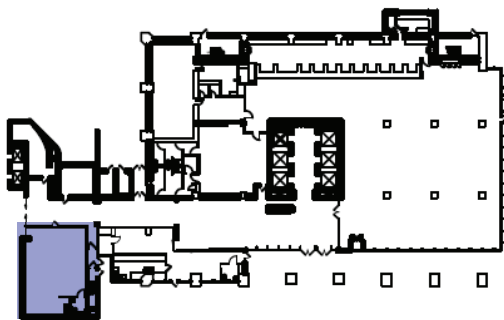
BUILDING TOP SIGNAGE AVAILABLE FOR LARGE TENANT.

FOR LEASE

Suite 140

1,020 SF

- Retail/Office space
- Ready for improvements
- Restroom



NEWMARK

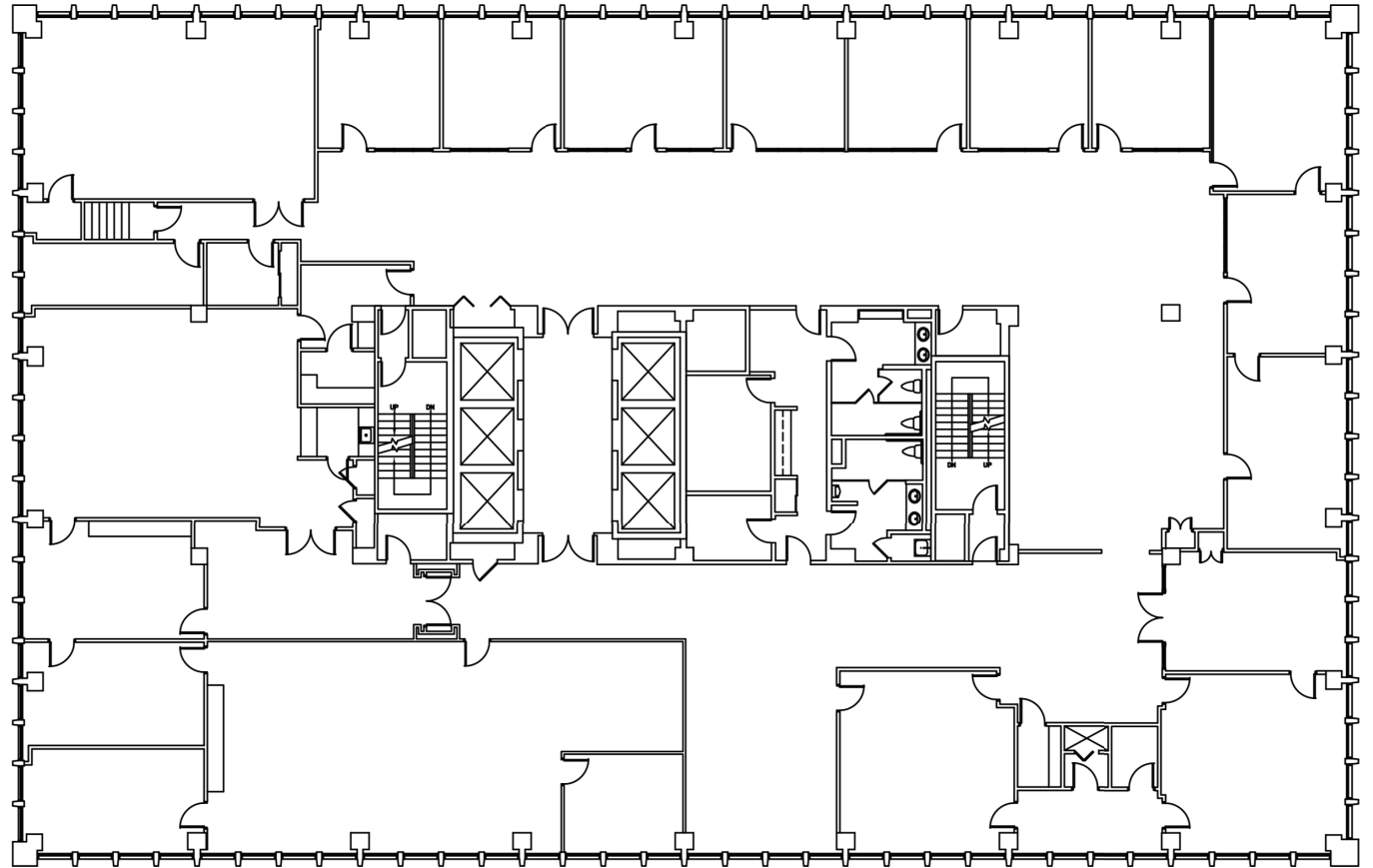
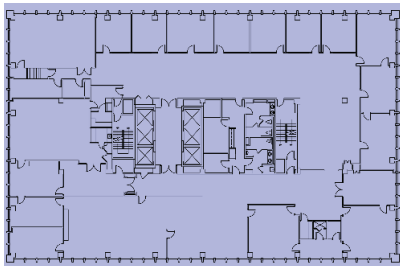
BARKER
PACIFIC
GROUP

FOR LEASE

Suite 200

16,662 SF

- Full-floor suite
- Direct access from elevator lobby
- Second generation suite
- 13 Offices
- 4 Conference rooms
- 1 Break room
- Restrooms



NEWMARK

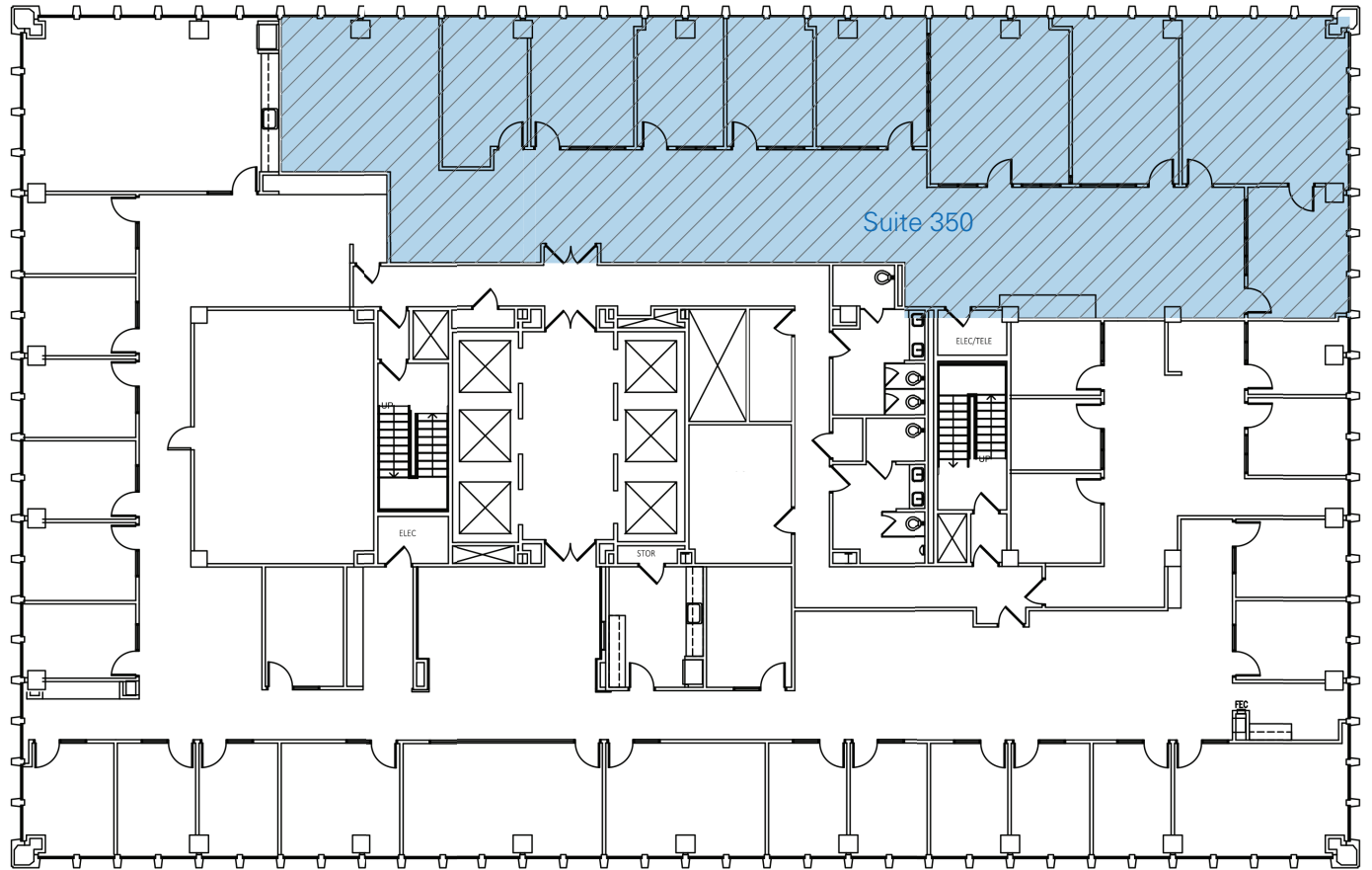
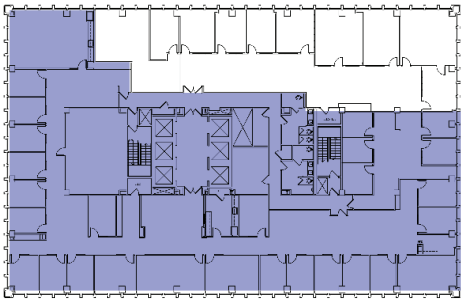
BARKER
PACIFIC
GROUP

FOR LEASE

Suite 300

11,744 SF

- Full-floor suite
- Second generation suite
- Conference rooms, private offices, & more
- Can be combined w/ suite 350 for a total of 16,670 SF



NEWMARK

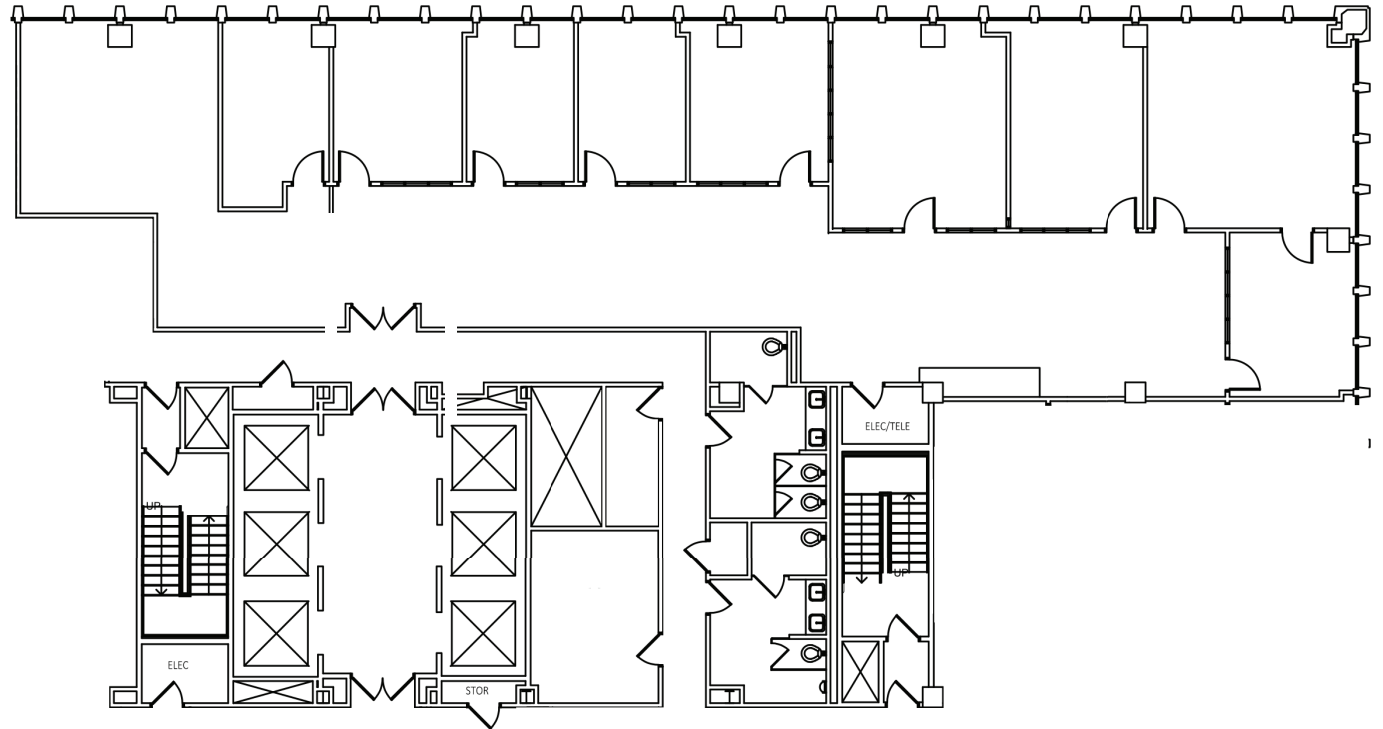
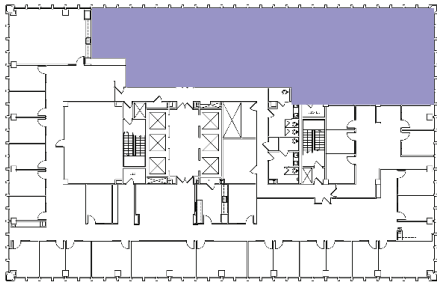
BARKER
PACIFIC
GROUP

FOR LEASE

Suite 350

4,926 SF

- Second generation suite
- 8 Offices
- Conference room
- Bullpen
- Can be combined w/
suite 300 for a total of
16,670 SF

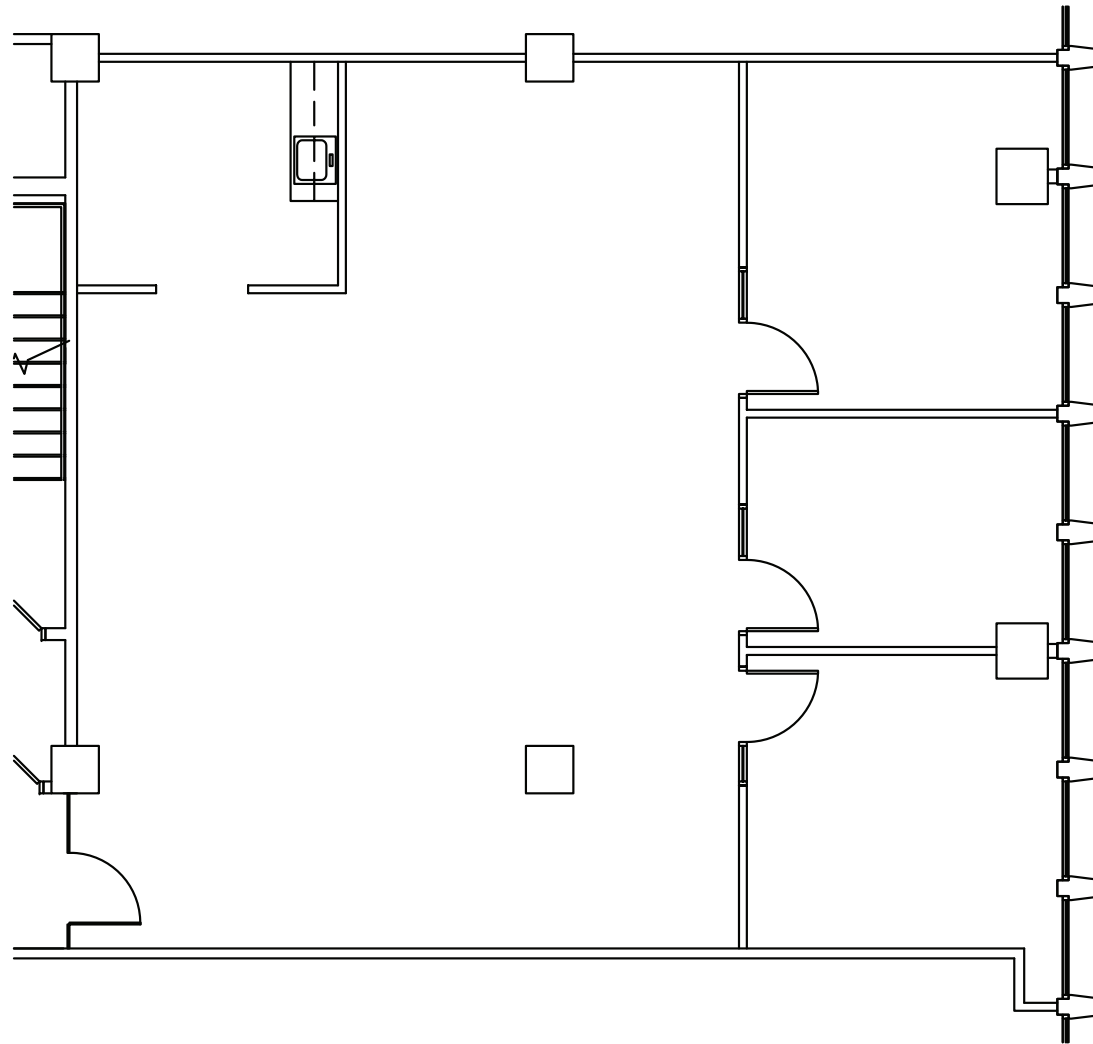
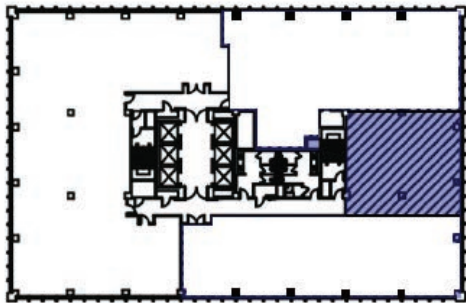


FOR LEASE

Suite 460

1,900 SF

- Brand new spec suite
- 2 Offices
- Conference room
- Break room
- Open area / bullpen
- Can be combined w/ suite 450 for 5,939 SF



NEWMARK

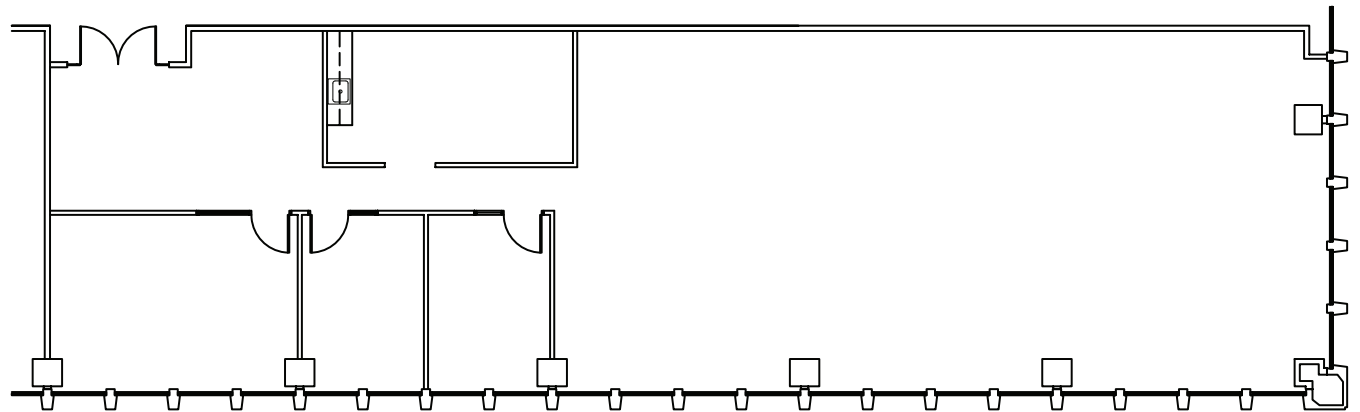
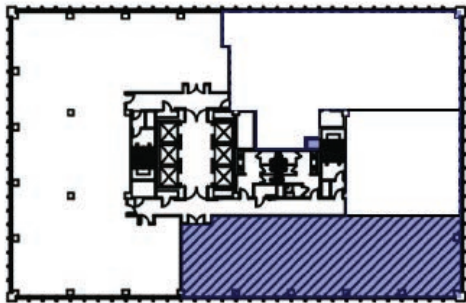
BARKER
PACIFIC
GROUP

FOR LEASE

Suite 470

3,504 RSF

- Brand new spec suite
- Reception area
- 2 Offices
- 1 Conference room
- Break room
- Large open area / bullpen



NEWMARK

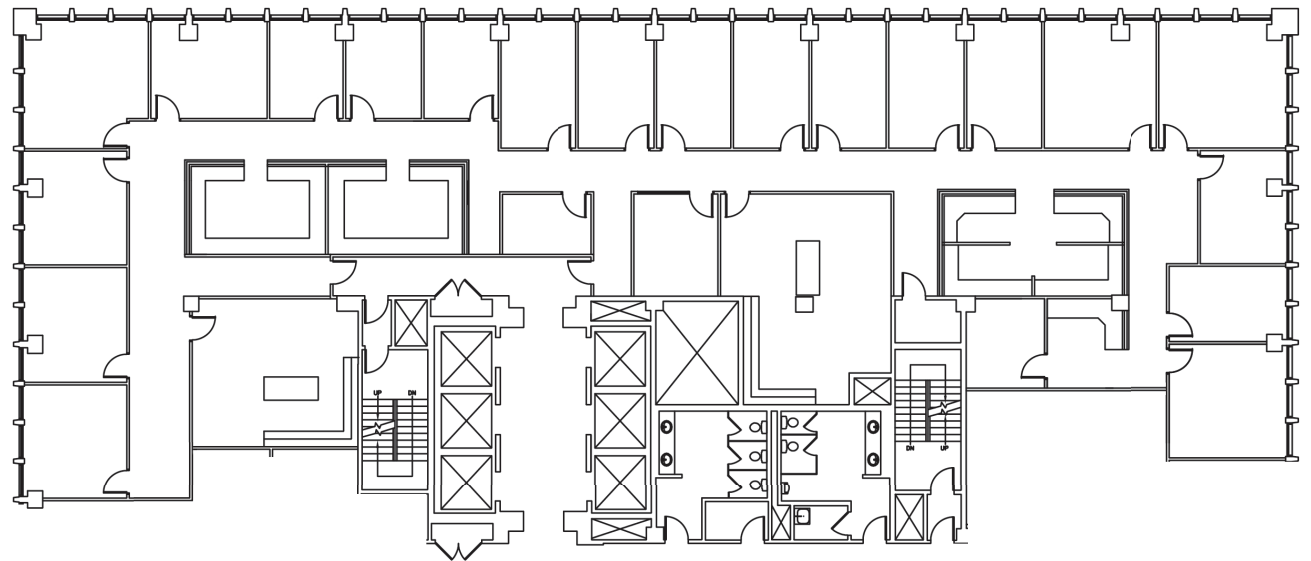
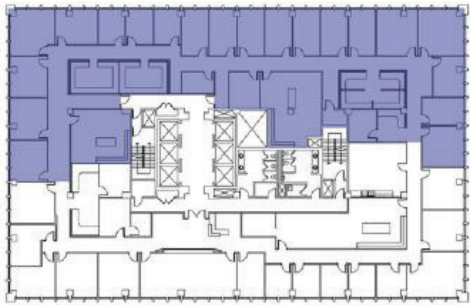
BARKER
PACIFIC
GROUP

FOR LEASE

Suite 510

9,814 SF

- Second generation suite, formerly occupied by a law firm
- 20 Offices
- Open work area
- Offices along the window line



NEWMARK

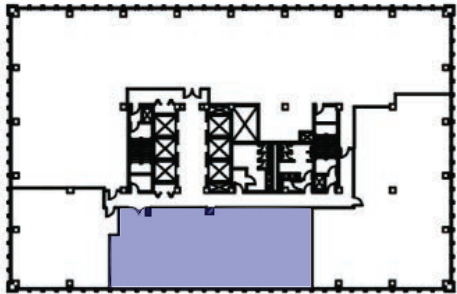
BARKER
PACIFIC
GROUP

FOR LEASE

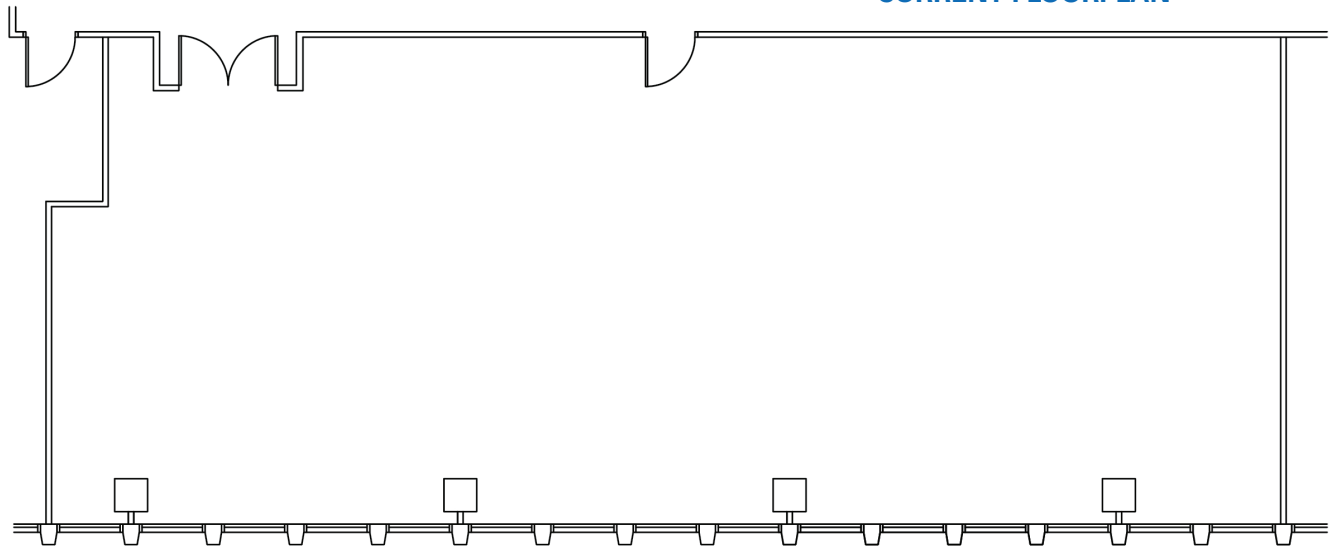
Suite 820

2,605 SF

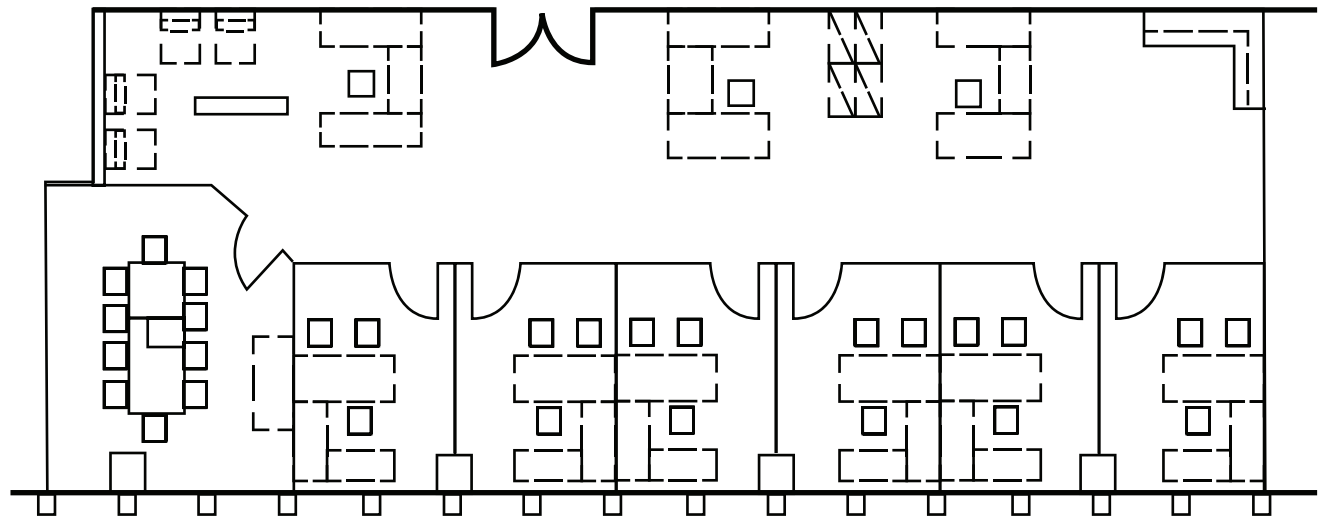
- Suite in shell condition
- Views to the east



CURRENT FLOORPLAN



CONCEPTUAL FLOORPLAN

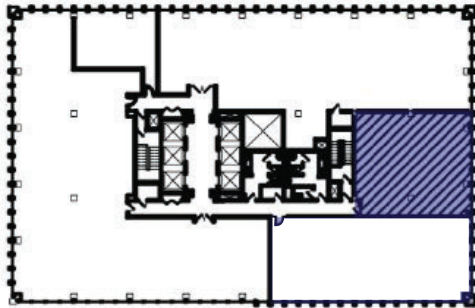
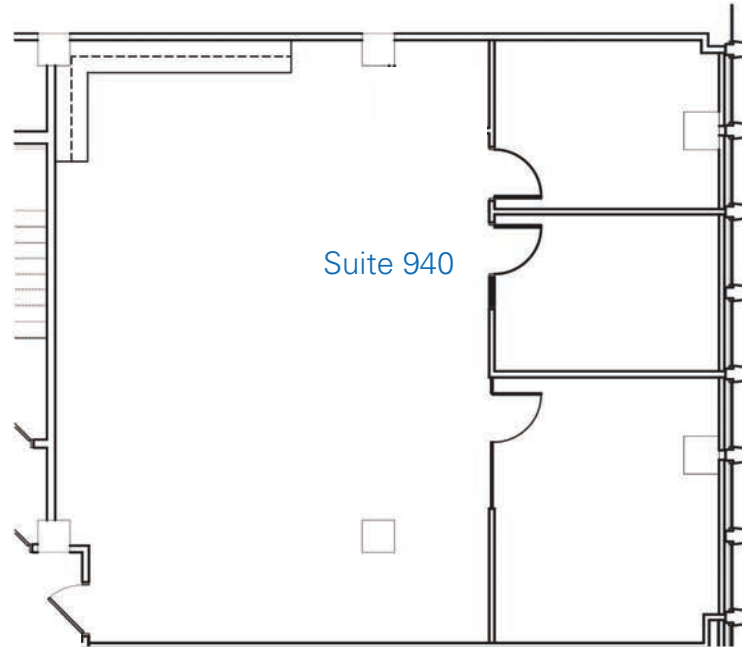


FOR LEASE

Suite 940

1,847 SF

- Second generation suite
- Ready for tenant improvements
- Can be combined w/ Suite 950 for a total of 6,683 SF
- Views to the north and east



NEWMARK

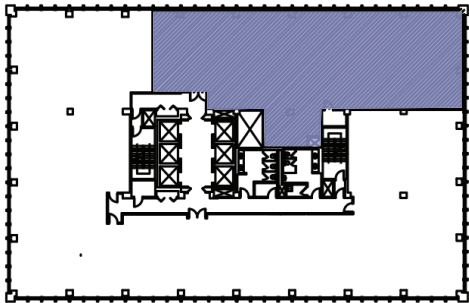
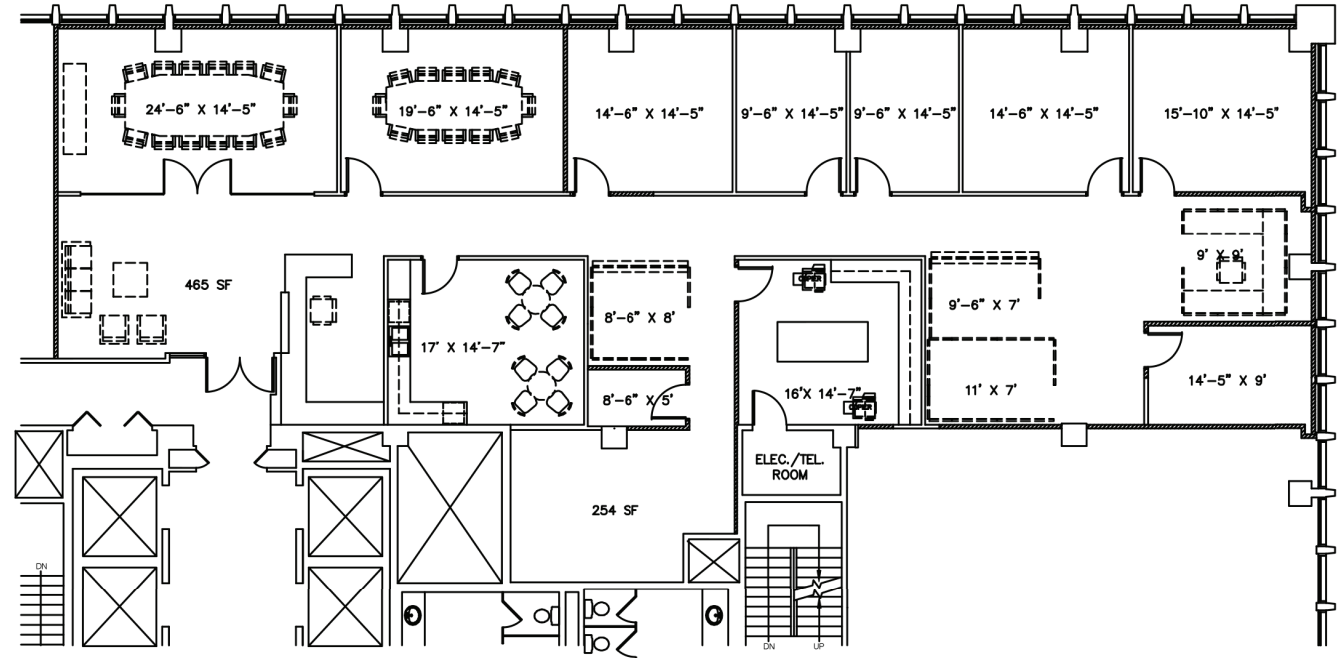
BARKER
PACIFIC
GROUP

FOR LEASE

Suite 950

4,836 SF

- Reception area
- 9 Offices
- 2 Conference rooms
- Break room
- Can be combined w/ Suite 940 for a total of 6,683 SF



NEWMARK

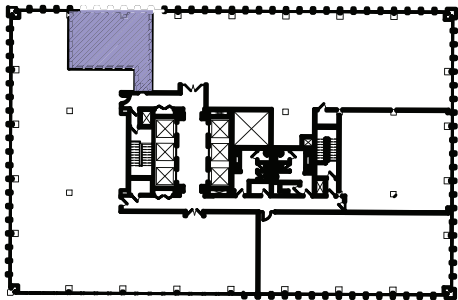
BARKER
PACIFIC
GROUP

FOR LEASE

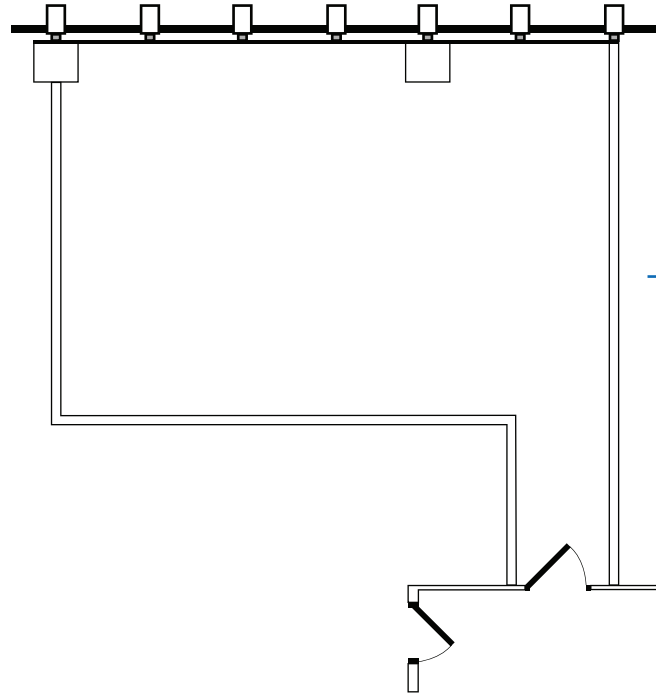
Suite 960

757 SF

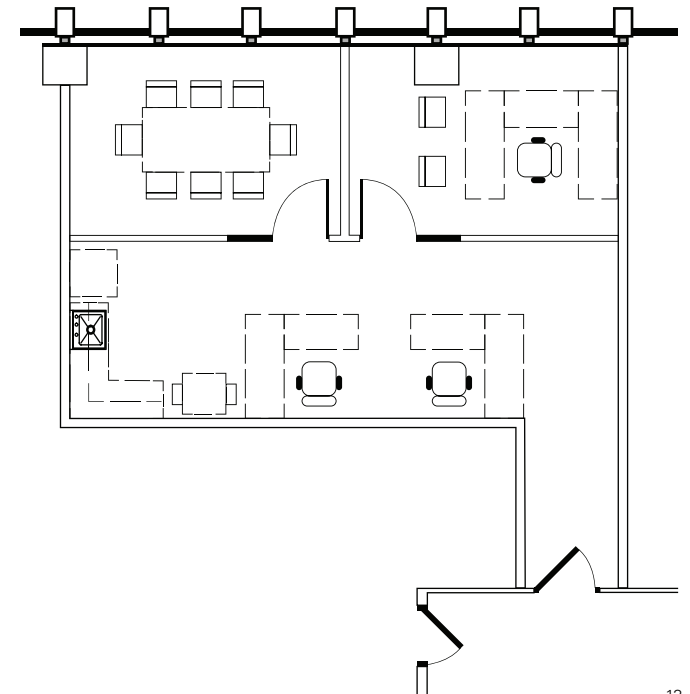
- Suite in shell condition
- Views to the north and east
- Potential spec suite



CURRENT FLOORPLAN



CONCEPTUAL FLOORPLAN



NEWMARK

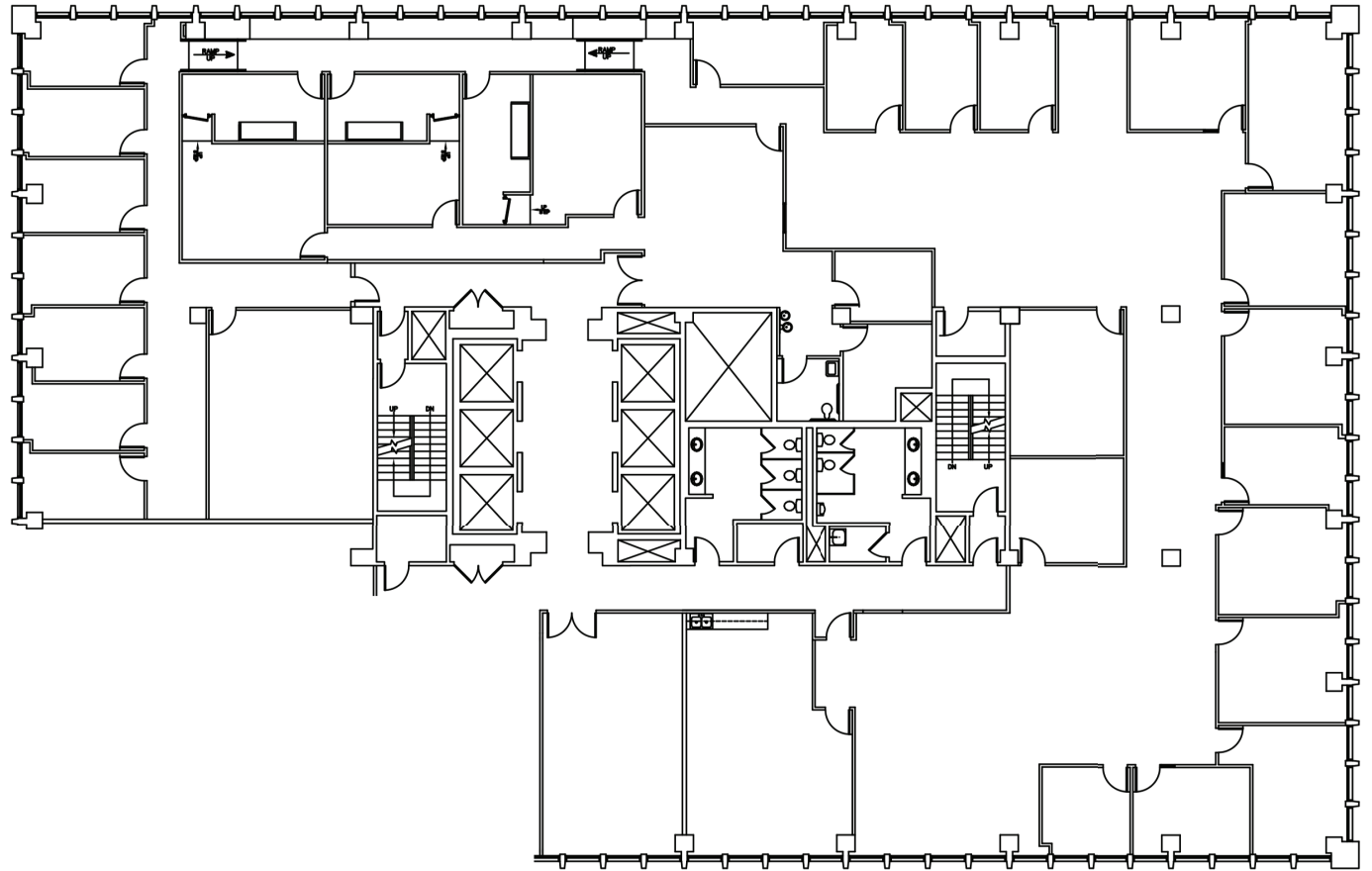
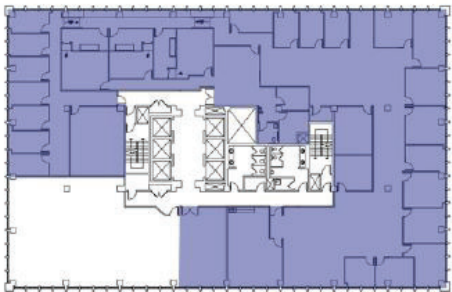
BARKER
PACIFIC
GROUP

FOR LEASE

Suite 1010

13,074 SF

- Second generation suite, formerly occupied by a family court
- Glass, double-door entry directly off elevator lobby
- Expansive window line w/ Strip & mountain views

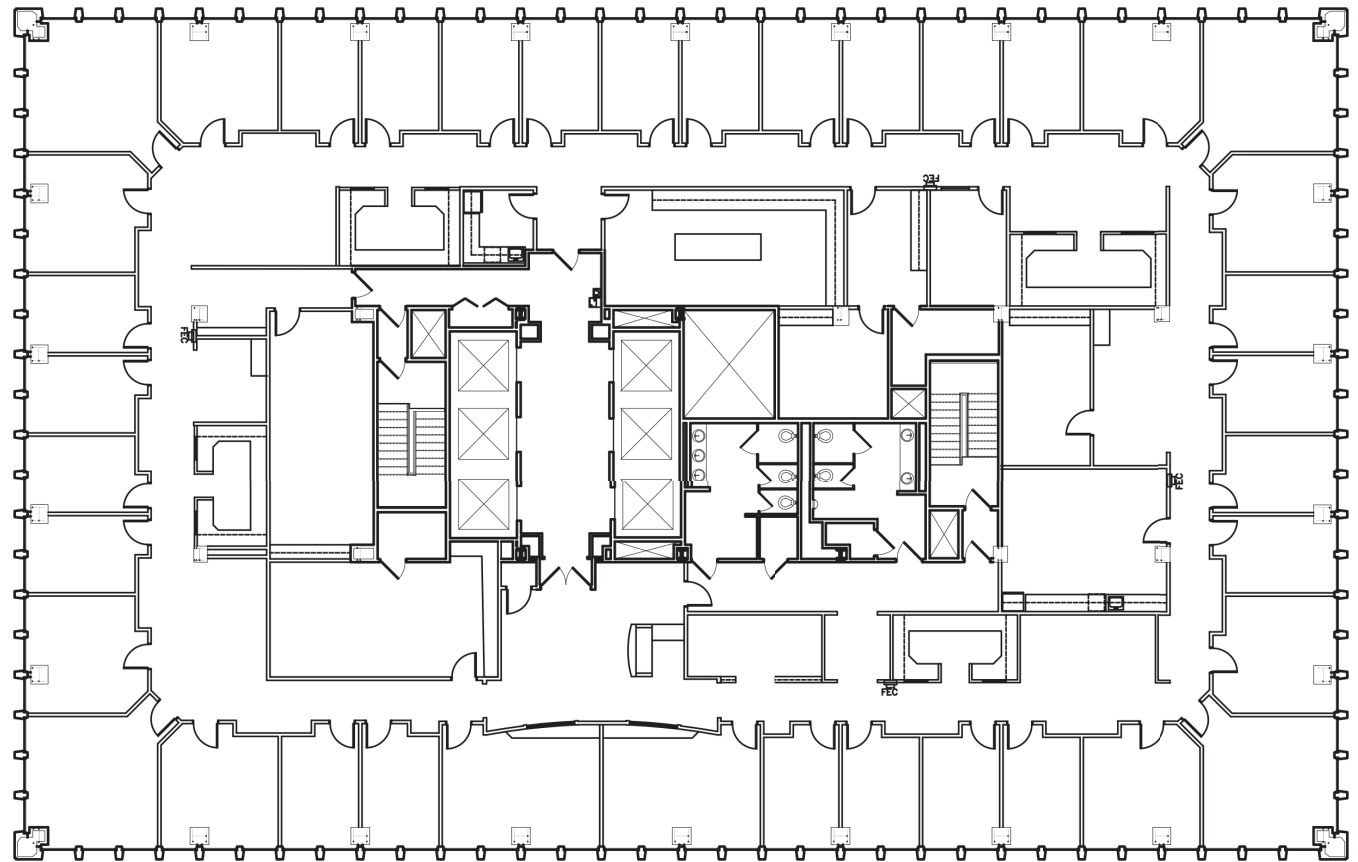


FOR LEASE

Suite 1100

16,574 SF

- Full-floor suite
- Second generation suite
- Reception area
- 36 offices
- 3 Conference rooms
- Break rooms
- Restrooms
- Views of the city, mountains, downtown, & the Las Vegas Strip



NEWMARK

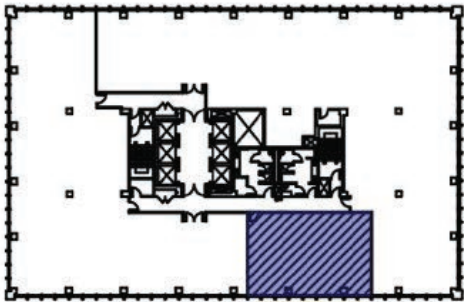
BARKER
PACIFIC
GROUP

FOR LEASE

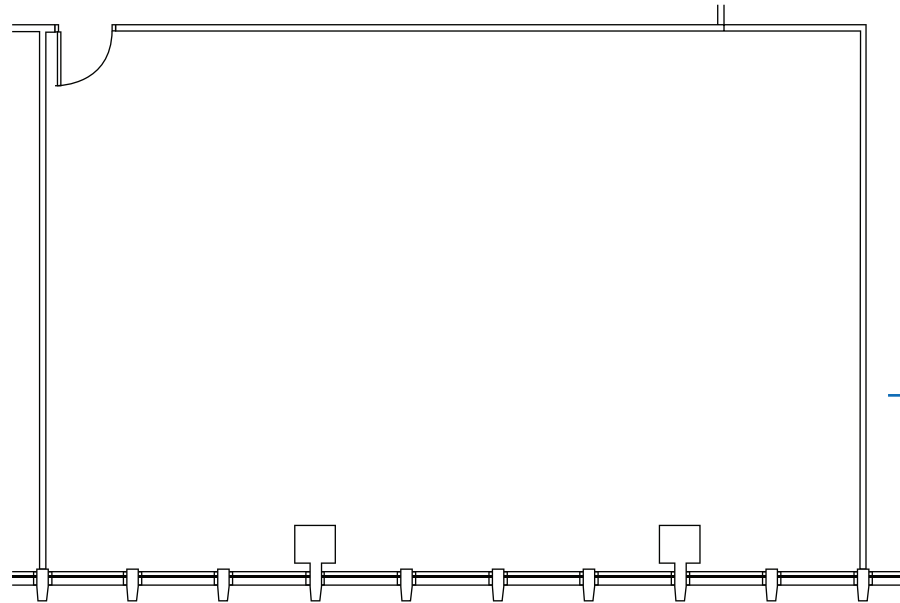
Suite 1530

1,580 SF

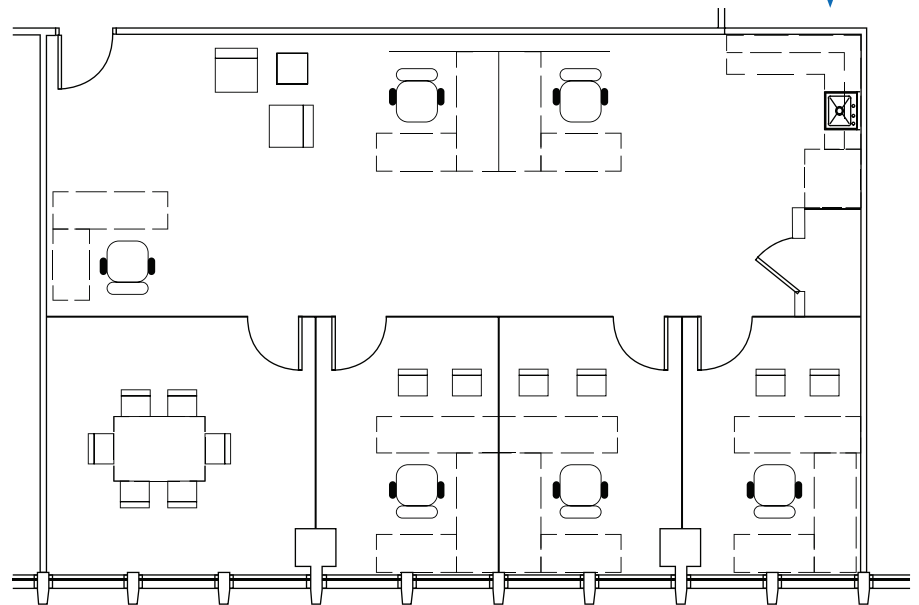
- Suite in shell condition
- Outstanding views
- Potential spec suite



CURRENT FLOORPLAN



CONCEPTUAL FLOORPLAN



NEWMARK

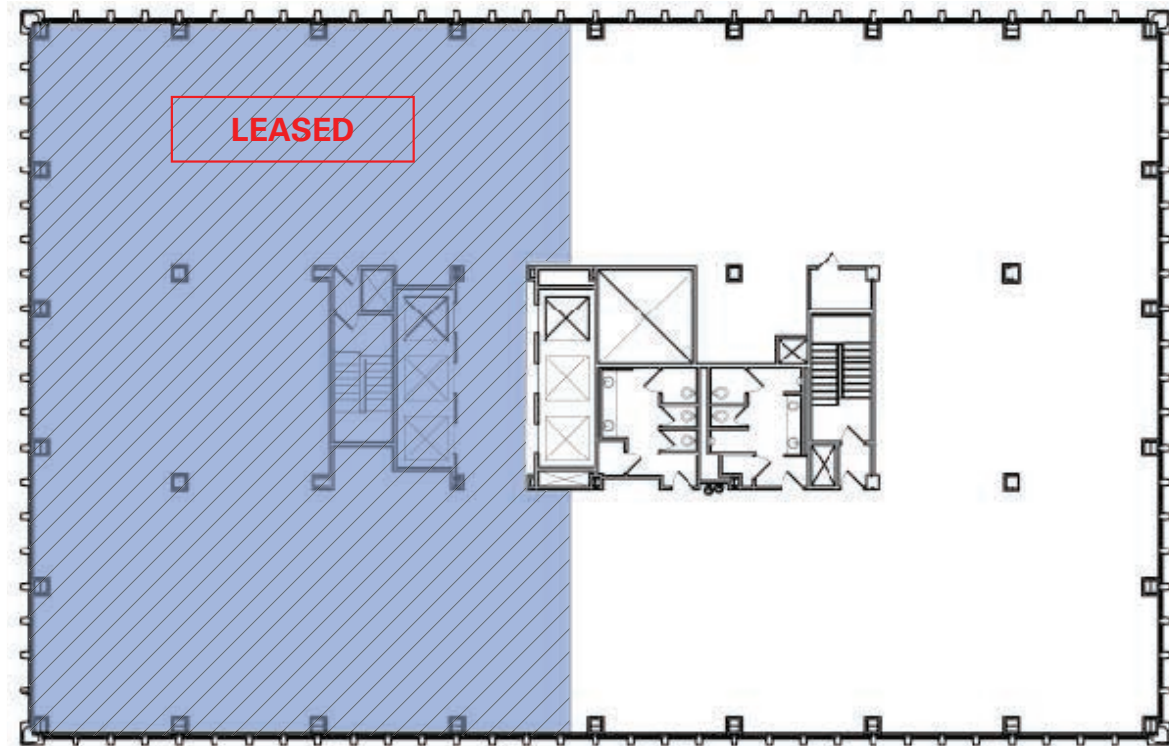
BARKER
PACIFIC
GROUP

FOR LEASE

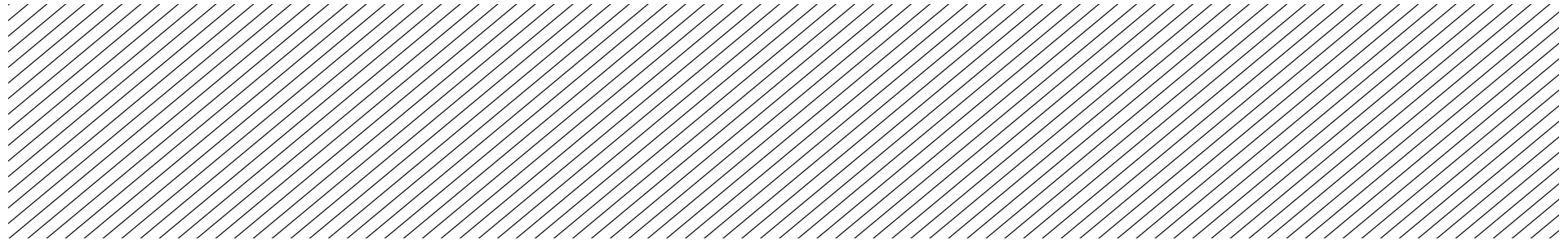
Suite 1650

8,760 SF

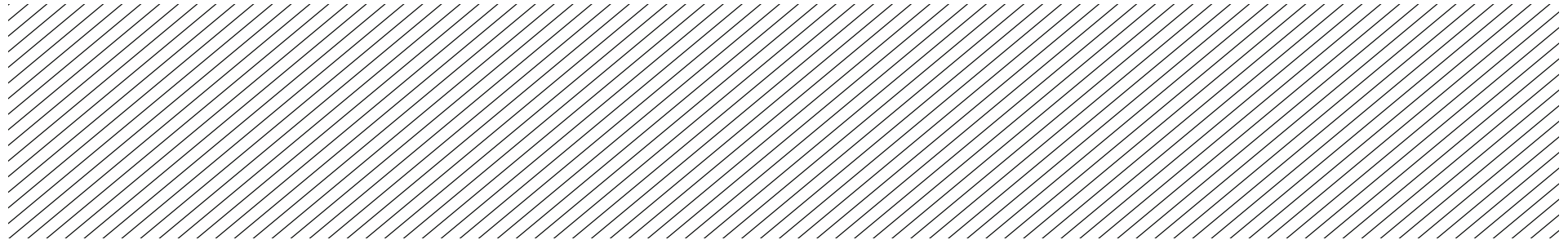
- Suite in shell condition
- Half-floor suite
- One of the highest office floors for lease in Downtown Las Vegas
- Views of the city, mountains, downtown, & the Las Vegas Strip



LOBBY PHOTOS



SUITE PHOTOS



STRIP VIEW



NEWMARK

BARKER
PACIFIC
GROUP

DOWNTOWN VIEW



NEWMARK

BARKER
PACIFIC
GROUP

DOWNTOWN LAS VEGAS



NEARBY AMENITIES



For Lease 300 S. 4th Street

TOWER 300



Prepared by:

Mike TabEEK, SIOR, CCIM
Senior Managing Director

t 702-405-1750
mike.tabEEK@nmrk.com
NV RE Lic. #B.0145775

Larry Singer
Senior Managing Director

t 702-405-1730
larry.singer@nmrk.com
NV RE Lic. #BS.0028687

Thomas Olsen
Associate

t 702-405-1714
thomas.olsen@nmrk.com
NV RE Lic. #S.0200270

The information contained herein has been obtained from sources deemed reliable but has not been verified and no guarantee, warranty or representation, either express or implied, is made with respect to such information. Terms of sale or lease and availability are subject to change or withdrawal without notice.

NEWMARK

BARKER
PACIFIC
GROUP

nmrk.com