



Keegan & Coppin
COMPANY, INC.

FOR LEASE

**233 TAMALPAIS DRIVE
CORTE MADERA, CA**

Best Central Marin
Office Location



REPRESENTED BY:

MATT STORMS, PARTNER
LIC # 01233478 (415) 461-1010, EXT 123
MSTORMS@KEEGANCOPPIN.COM



OFFICE SPACE FOR LEASE



233 TAMALPAIS DRIVE
CORTE MADERA, CA

**BEST MARIN COUNTY
OFFICE LOCATION**

PROPERTY INFORMATION

HIGHLIGHTS

- Ideal central Marin location
- Directly across the street from Corte Madera Town Hall
- Abundant parking
- Easy freeway access

OFFICE SPACE

Suite B: 1,992+/- sq ft

DESCRIPTION

7 private offices, open area, private courtyard and awning signage available.

LEASE TERMS

Size

1,992+/- sq ft

Rate

\$3.25 per sq ft

Terms

3-5 years

Gross unserviced with a base year

Parking

Abundant on-site

Zoning

O (Office)

Keegan & Coppin Co., Inc.
 101 Larkspur Landing Circle, Ste. 112
 Larkspur, CA 94939
www.keegancoppin.com
 (415) 461-1010

The above information, while not guaranteed, has been secured from sources we believe to be reliable. Submitted subject to error, change or withdrawal. An interested party should verify the status of the property and the information herein.

REPRESENTED BY:

MATT STORMS, PARTNER
 LIC # 01233478 (415) 461-1010, EXT 123
MSTORMS@KEEGANCOPPIN.COM



OFFICE SPACE FOR LEASE



233 TAMALPAIS DRIVE
CORTE MADERA, CA

**BEST MARIN COUNTY
OFFICE LOCATION**

DESCRIPTION OF AREA

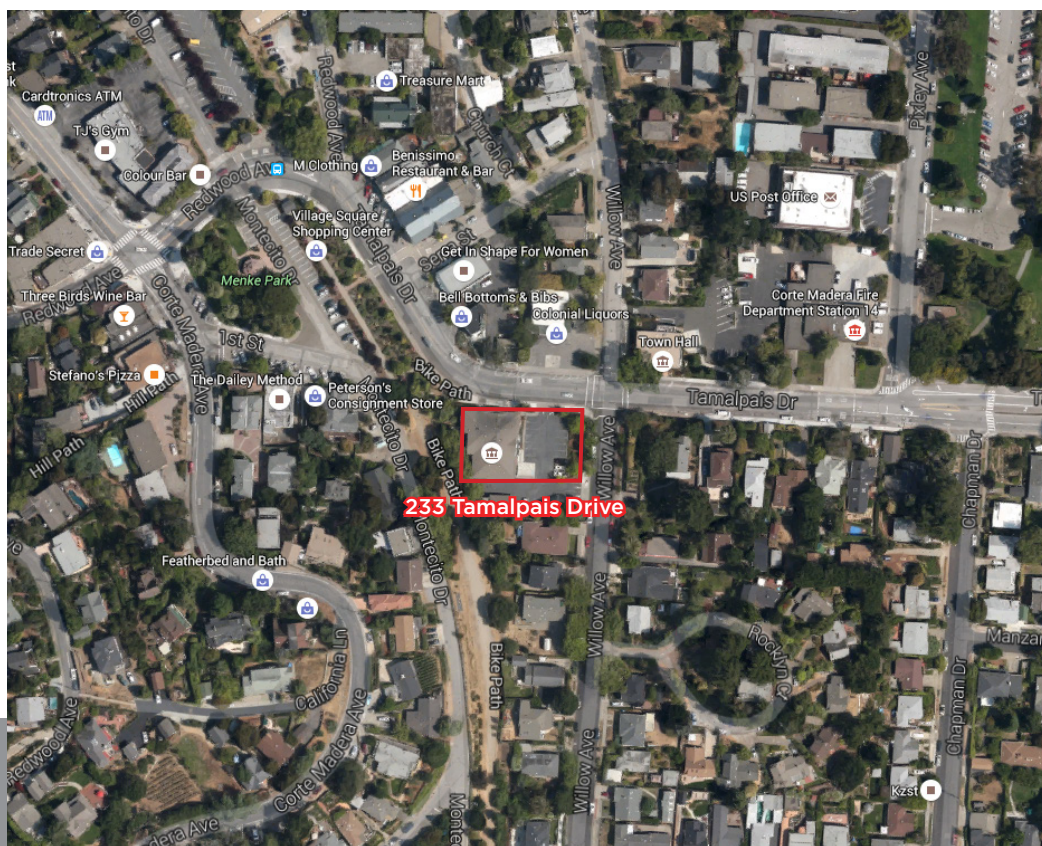
Directly across the street from Corte Madera Town Hall. Easy freeway access, close to shops and restaurants.

NEARBY AMENITIES

- Corte Madera Town Center
- The Village at Corte Madera
- Downtown Larkspur
- Park Madera Shopping Center

TRANSPORTATION ACCESS

- Larkspur SMART Train Station, 7 minutes
- Larkspur Ferry Terminal, 8 minutes
- Golden Gate Bridge, 10 minutes
- Richmond-San Rafael Bridge, 12 minutes



REPRESENTED BY:

MATT STORMS, PARTNER
KEEGAN & COPPIN CO., INC.
LIC # 01233478 (415) 461-1010, EXT 123
MSTORMS@KEEGANCOPPIN.COM

The above information, while not guaranteed, has been secured from sources we believe to be reliable. Submitted subject to error, change or withdrawal. An interested party should verify the status of the property and the information herein.



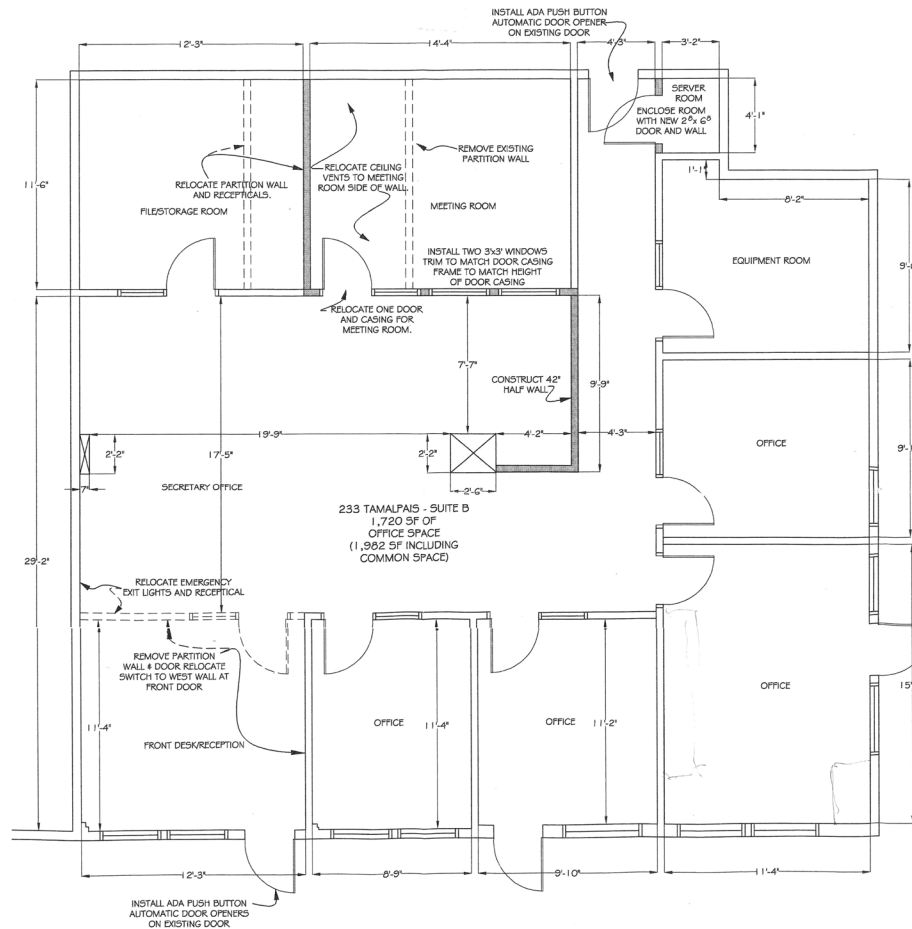
233 TAMALPAIS DRIVE CORTE MADERA, CA FLOOR PLAN



233 TAMALPAIS DRIVE
CORTE MADERA, CA

**BEST MARIN COUNTY
OFFICE LOCATION**

SUITE B
1,992+/- RSF



DECK

PRESENTED BY:

MATT STORMS, PARTNER
KEEGAN & COPPIN CO., INC.
LIC # 01233478 (415) 461-1010, EXT 123
MSTORMS@KEEGANCOPPIN.COM