



**FOR LEASE**

14,089 SF Walgreens Space

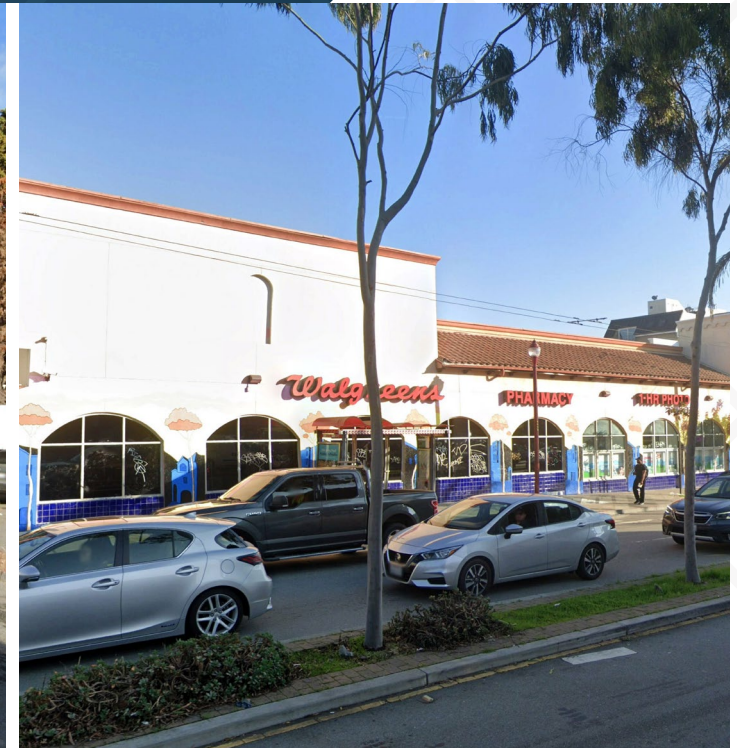
1189 Potrero Ave | San Francisco, CA 94110





# Walgreens Space

1189 Potrero Ave | San Francisco, CA 94110



14,089 SF

Building

5/1/2027

Lease End Date

Contact Broker

Asking

## ABOUT THE PROPERTY

All offers are subject to approval by Walgreens Real Estate Committee.

- Corner location in San Francisco's Mission District at the intersection of Potrero Ave & 24th St.
- The surrounding neighborhood is home to numerous local restaurants and cafes.
- Close proximity to San Francisco General Hospital.
- Dedicated parking lot with ±22 spaces and driveways on both Potrero and 24th.



## TRAFFIC COUNTS

Potrero Ave  
24th St

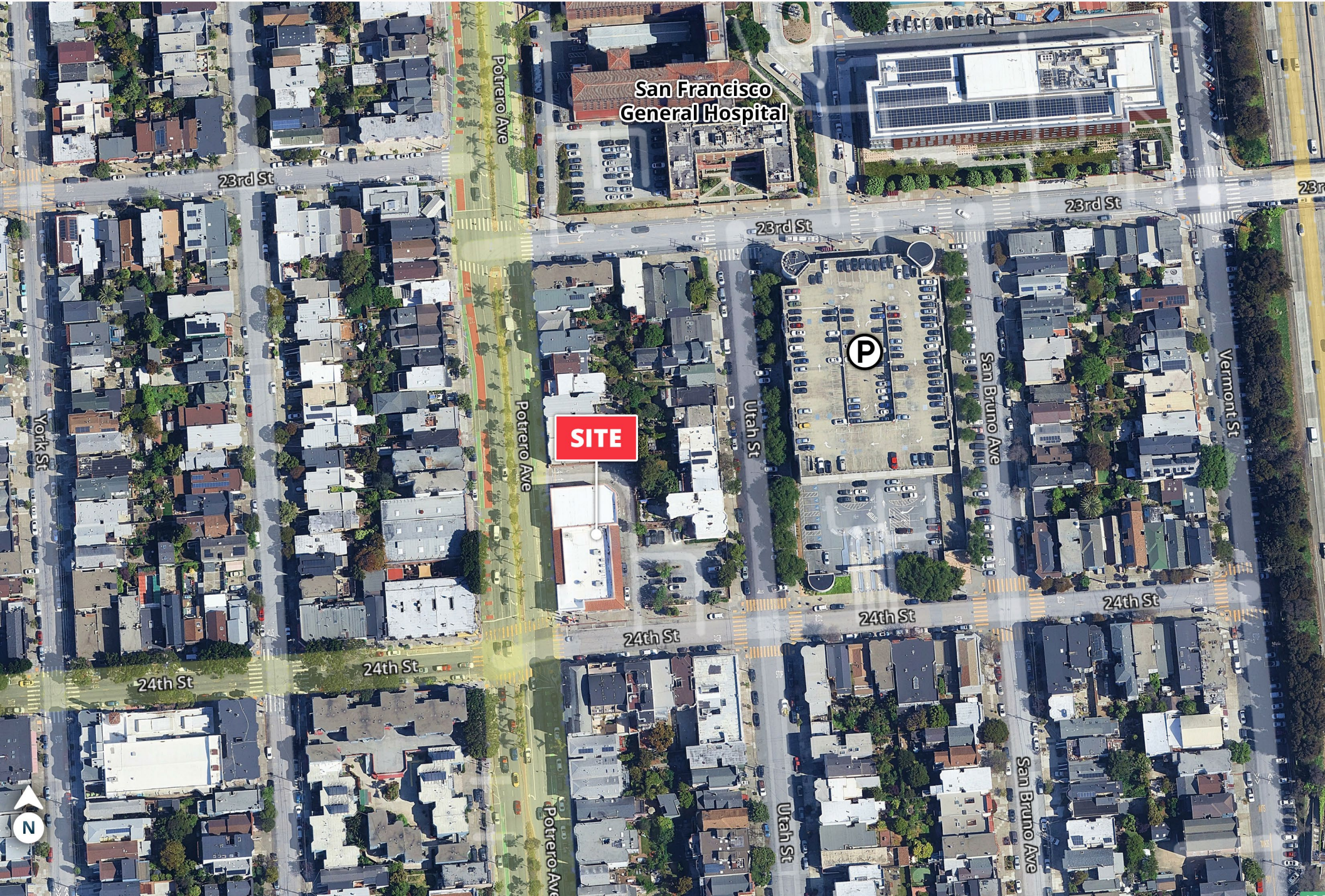
Year: 2023 | Placer Labs, Inc.

14,686 VPD  
2,762 VPD



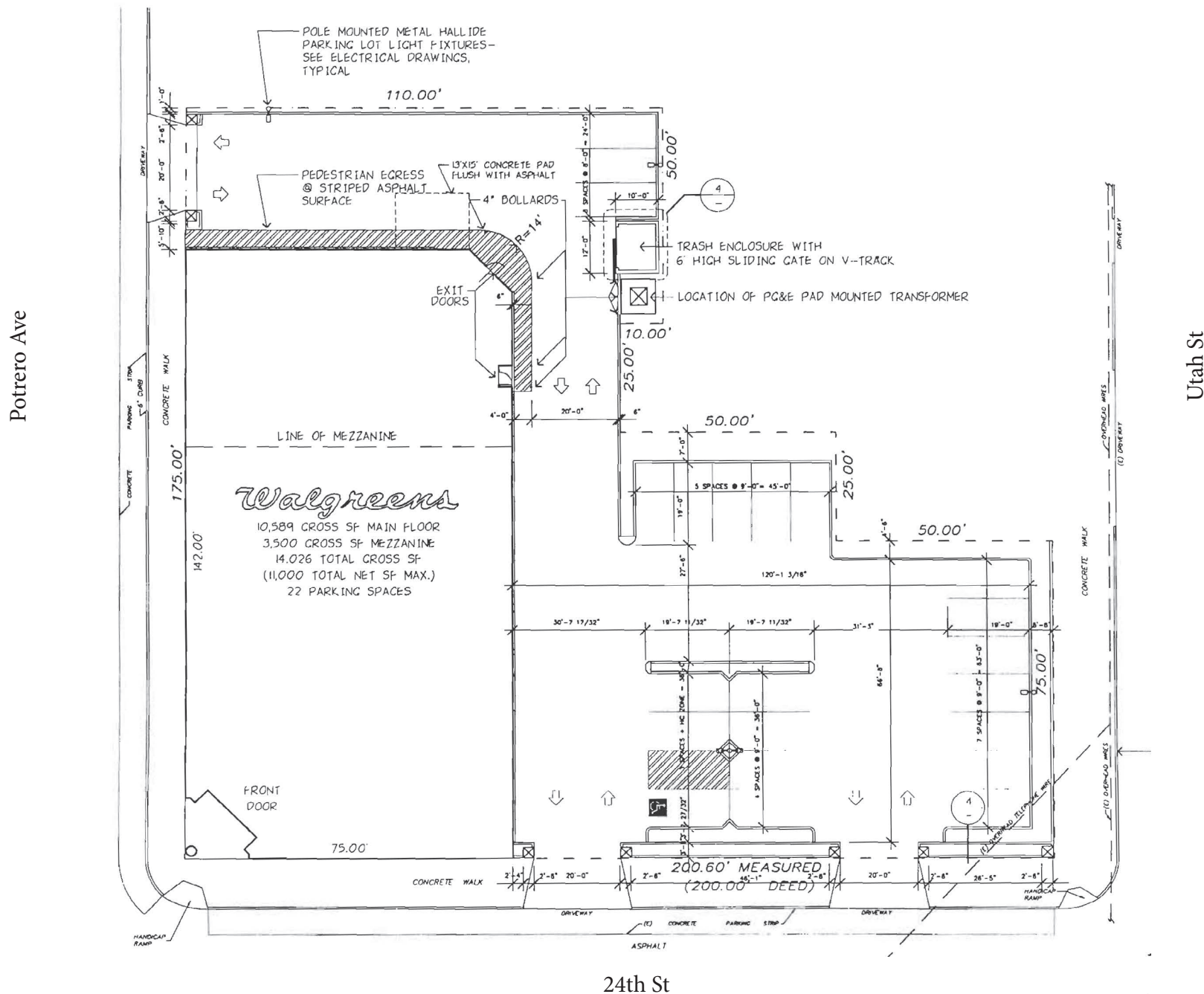
# Walgreens Space

1189 Potrero Ave | San Francisco, CA 94110





1189 Potrero Ave | San Francisco, CA 94110



# Walgreens Space

1189 Potrero Ave | San Francisco, CA 94110



## DEMOGRAPHIC HIGHLIGHTS

### Population

	1 Mile	3 Miles	5 Miles
2024 Estimated Population	58,906	498,694	820,755
2029 Projected Population	60,709	508,863	834,629
Projected Annual Growth 2024 to 2029	0.60%	0.40%	0.34%

### 2024 Daytime Population

Daytime Population	61,153	760,892	1,042,730
Workers	44,018	590,276	751,145
Residents	17,135	170,616	291,585

### 2024 Income

Average Household Income	\$231,840	\$196,613	\$199,237
Median Household Income	\$178,464	\$137,309	\$141,952

### Households & Growth

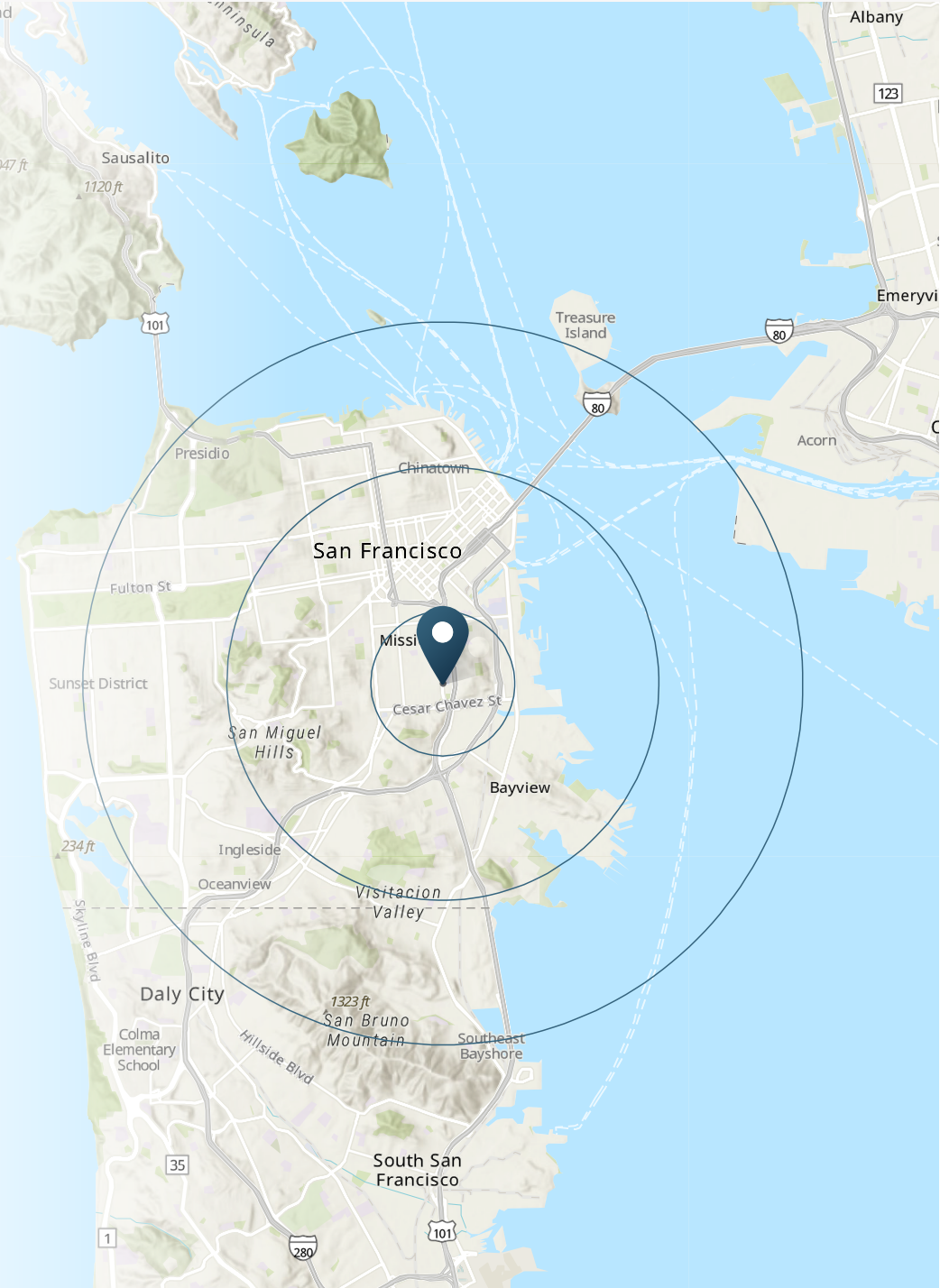
2024 Estimated Households	24,833	227,141	358,424
2029 Projected Households	25,637	232,170	364,610
Projected Annual Growth 2024 to 2029	0.66%	0.41%	0.31%

### 2024 Race & Ethnicity

White	43.43%	38.14%	37.90%
Black or African American	3.91%	7.06%	5.37%
Asian or Pacific Islander	17.77%	31.29%	35.65%
Other Race	18.99%	11.04%	9.49%
Two or More Races	13.78%	10.91%	10.32%
Hispanic	31.80%	19.77%	17.46%

> **Want more?** Contact us for a complete demographic, foot-traffic, and mobile data insights report.

SOURCE





**SRS Real Estate Partners**  
150 California Street, 14th Fl  
San Francisco, CA 94111  
415.908.4930

**Matthew D. Alexander**  
**EVP & Principal**  
415.908.4938  
matt.alexander@srsre.com  
CA License No. 00883993

**Sarah D. Edwards**  
**First Vice President**  
408.216.2322  
sarah.edwards@srsre.com  
CA License No. 01297272

**SRSRE.COM**

© SRS Real Estate Partners

The information presented was obtained from sources deemed reliable;  
however SRS Real Estate Partners does not guarantee its completeness or accuracy.