



SOMI Center

5966 South Dixie Highway, Miami, FL 33143

Nestled where South Miami's best neighborhoods intersect, SOMI Center boasts unparalleled visibility and branding exposure in the highly walkable South Miami area. SOMI is adjacent to the University of Miami and minutes from Downtown Coral Gables, Coconut Grove, Brickell, Downtown Miami and Miami International Airport.

Owned & Managed By:



Leasing By:

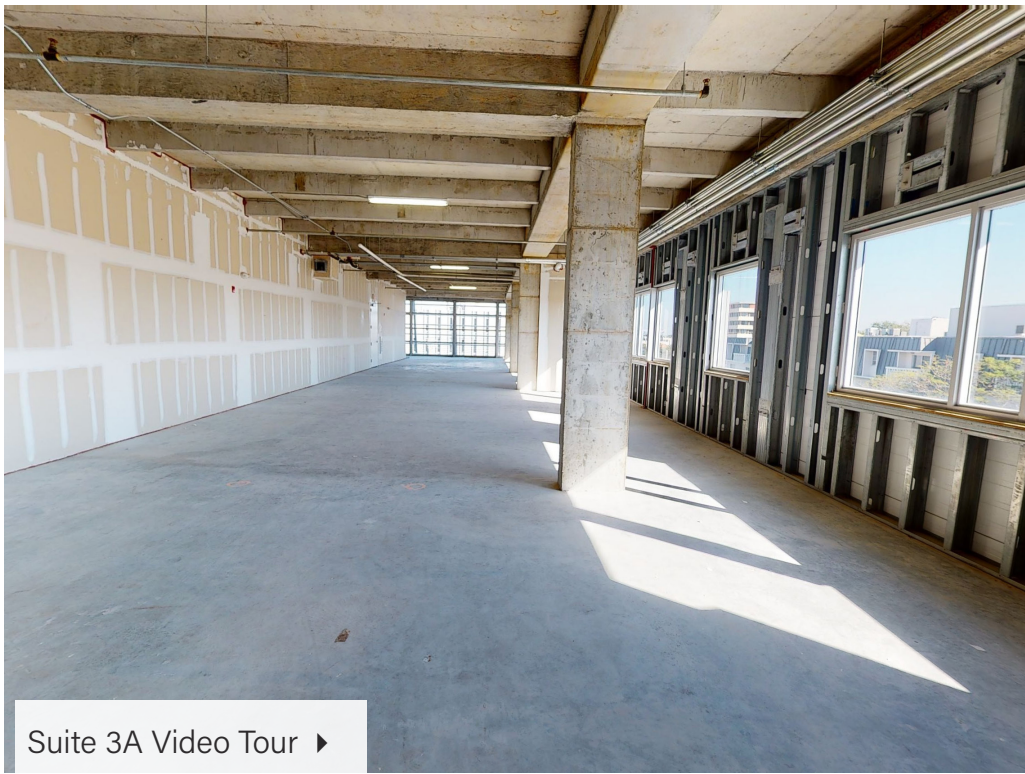




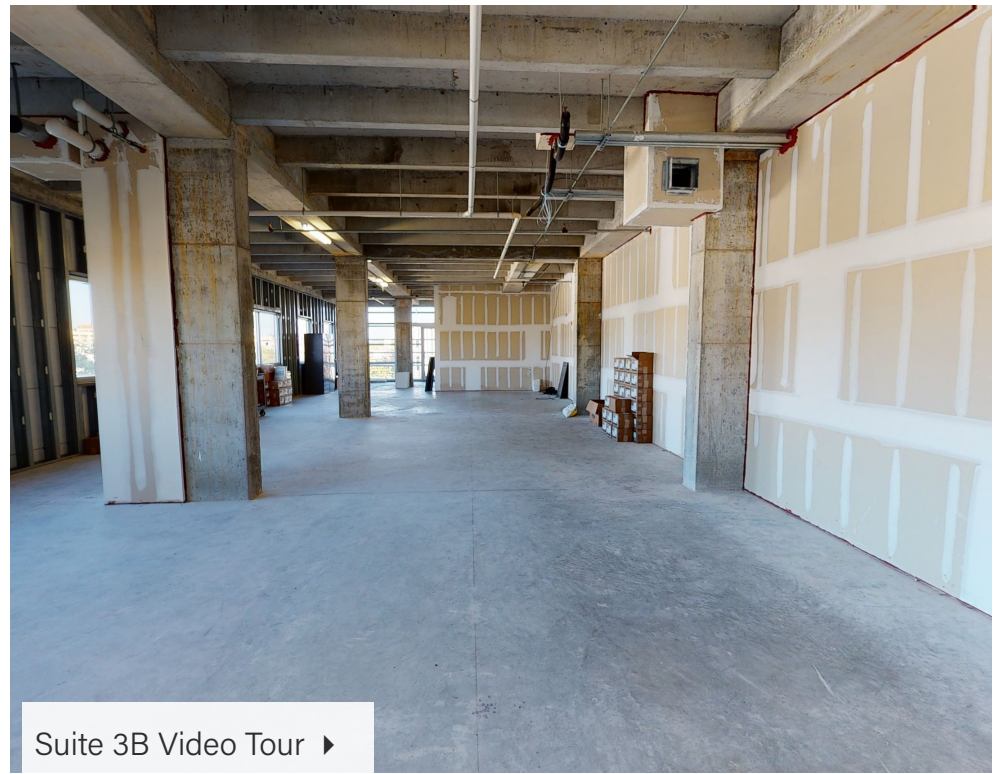
Building Facts

Address:	5966 S. Dixie Hwy., Miami, FL 33143
Class:	A - Medical Office Building
Size:	52,464 Rentable Square Feet
Parking Ratio:	4 spaces per 1,000 square feet leased
Features:	High Ceilings Abundant Natural Light 24-Hour Access Spec Suites Underway
Walk Score®:	93 "Walker's Paradise"
Ownership:	Owned and operated by ShareMD, a private equity-backed healthcare services company

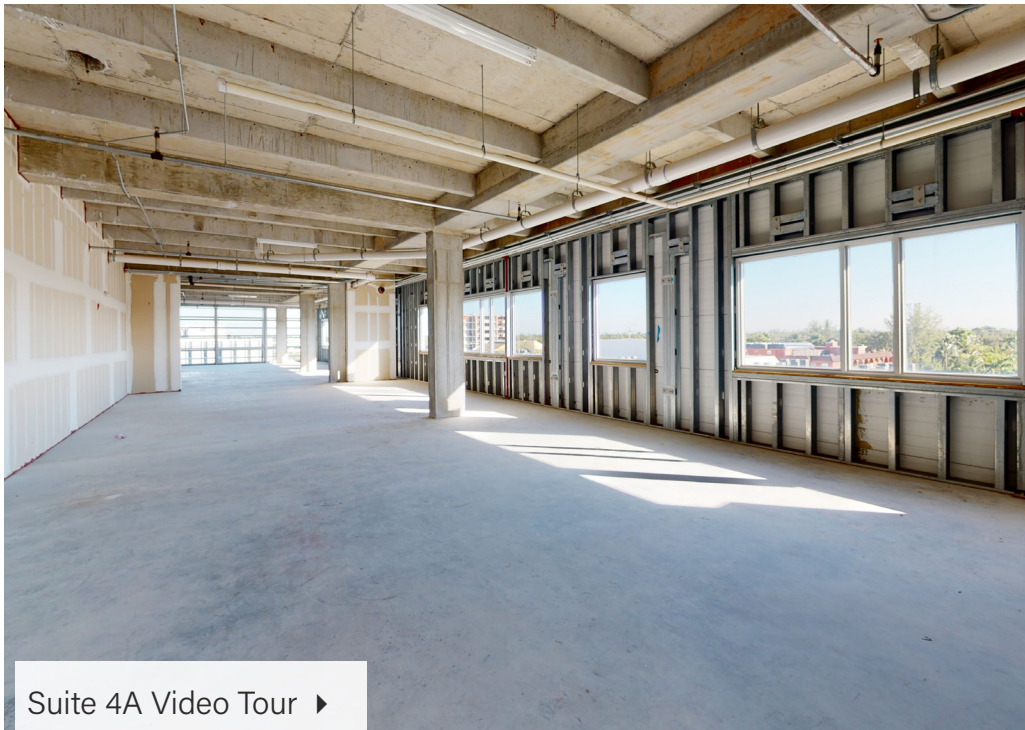




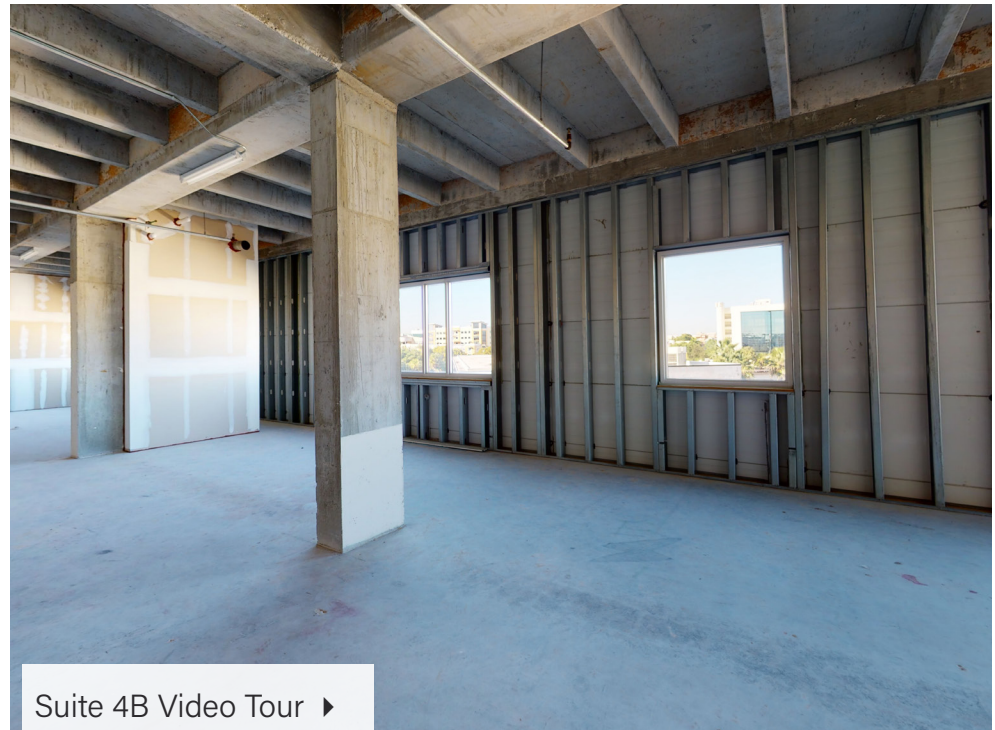
[Suite 3A Video Tour ▶](#)



[Suite 3B Video Tour ▶](#)



[Suite 4A Video Tour ▶](#)



[Suite 4B Video Tour ▶](#)

Nearby Amenities

SOMI Center offers a variety of nearby amenities. Boasting a "Walker's Paradise" WalkScore®, nearby shopping and restaurants are all within walking distance. Metromover stations offer connectivity via mass transit to Coral Gables, Brickell and Downtown Miami.



Leasing Contact:



Blanca Commercial Real Estate, Inc.
Licensed Real Estate Broker
1450 Brickell Avenue, Suite 2060
Miami, Florida 33131

BLANCA COMMERCIAL REAL ESTATE, LICENSED REAL ESTATE BROKER | No warranty of representation, expressed or implied, is made as to the accuracy of the information contained herein, and same is submitted subject to errors, omissions, change of price rental or other conditions, withdrawal without notice, and to any special conditions imposed by our clients.

Andres del Corral

305.577.0271

andres.delcorral@blancacre.com

Alex Marquez

305.377.6589

alex.marquez@blancacre.com

Owned & Managed By:

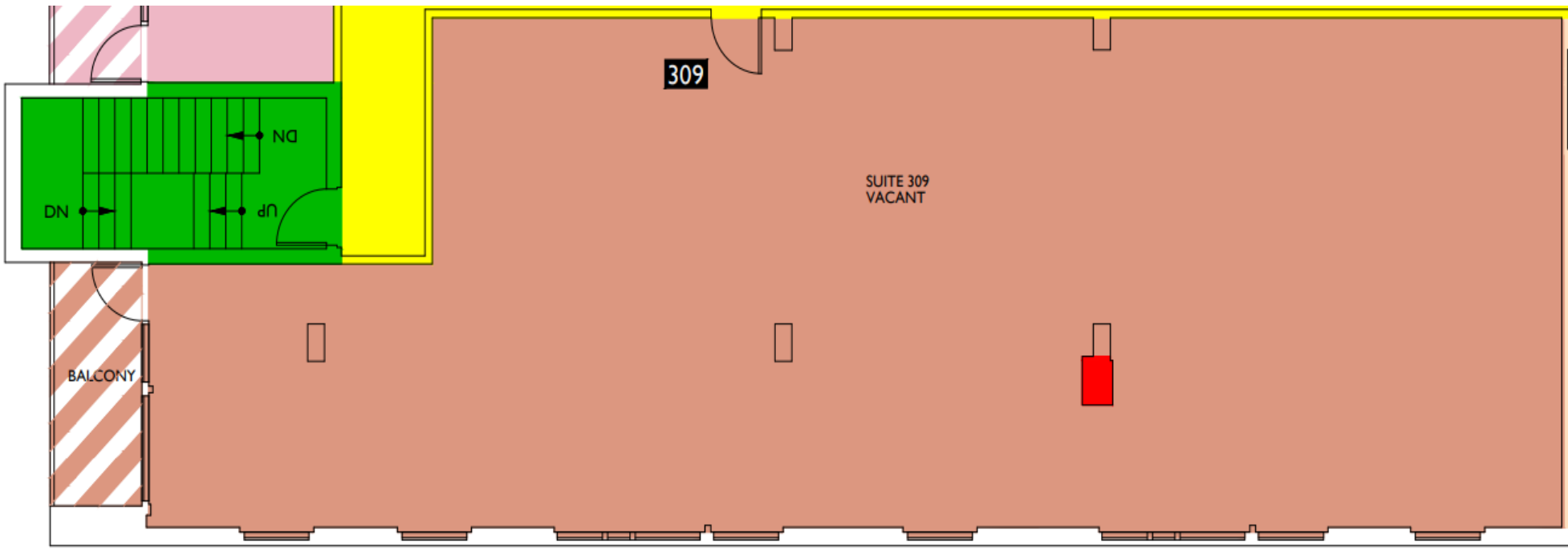




SOMI Center

5966 South Dixie Highway, Miami, FL 33143

Suite 309 | 2,679 RSF



LEASING CONTACTS



Blanca Commercial Real Estate, Inc.
Licensed Real Estate Broker
1450 Brickell Avenue, Suite 2060
Miami, Florida 33131

Andres del Corral
305.577.0271
andres.delcorral@blancacre.com

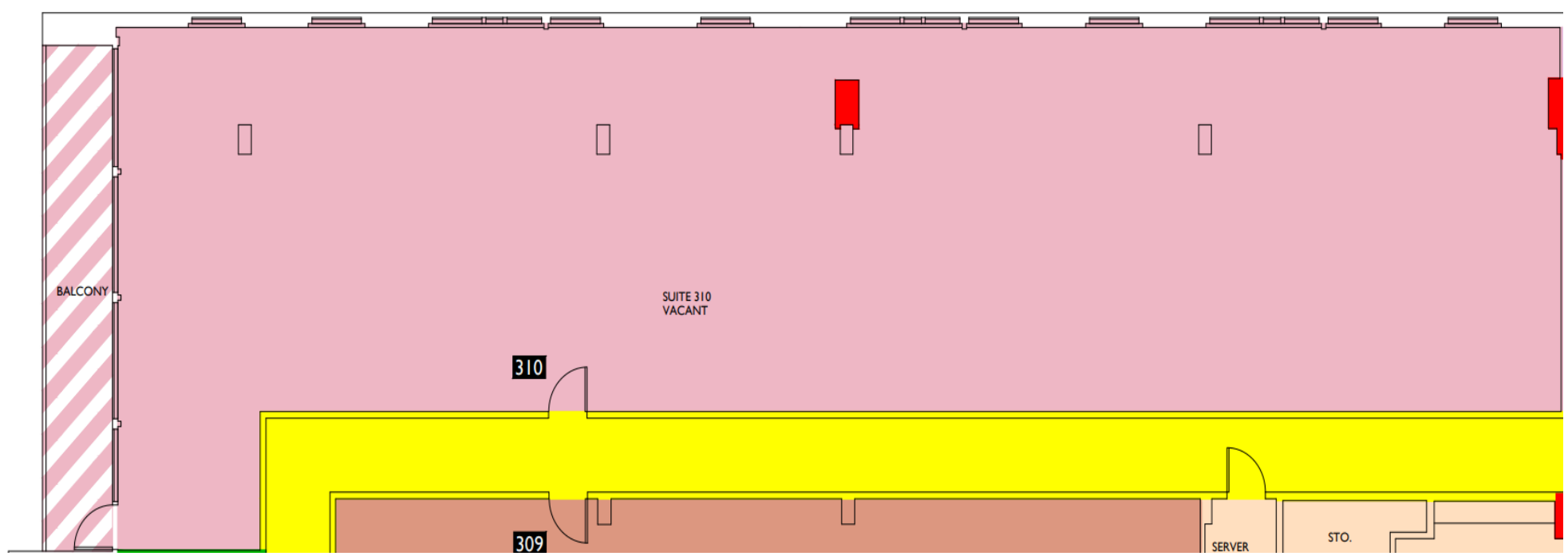
Alex Marquez
305.377.6589
alex.marquez@blancacre.com



SOMI Center

5966 South Dixie Highway, Miami, FL 33143

Suite 310 | 3,996 RSF



LEASING CONTACTS



Blanca Commercial Real Estate, Inc.
Licensed Real Estate Broker
1450 Brickell Avenue, Suite 2060
Miami, Florida 33131

Andres del Corral
305.577.0271
andres.delcorral@blancacre.com

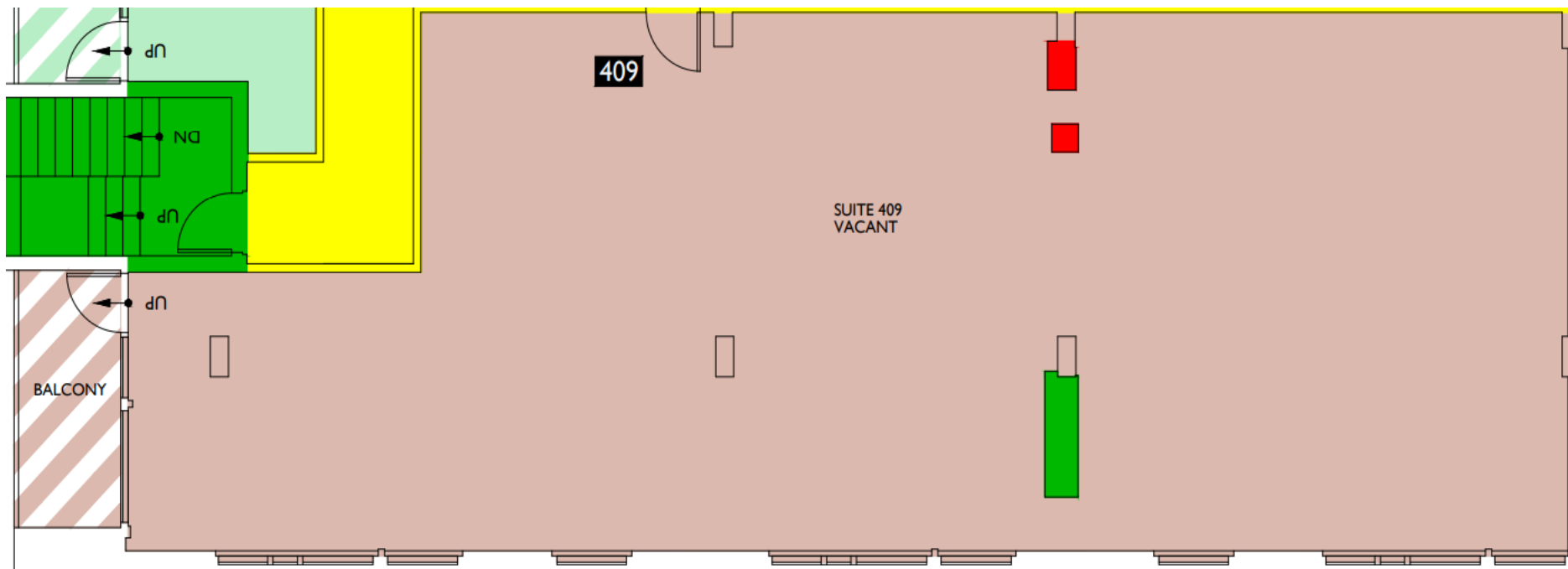
Alex Marquez
305.377.6589
alex.marquez@blancacre.com



SOMI Center

5966 South Dixie Highway, Miami, FL 33143

Suite 409 | 2,535 RSF



LEASING CONTACTS



Blanca Commercial Real Estate, Inc.
Licensed Real Estate Broker
1450 Brickell Avenue, Suite 2060
Miami, Florida 33131

Andres del Corral

305.577.0271

andres.delcorral@blancacre.com

Alex Marquez

305.377.6589

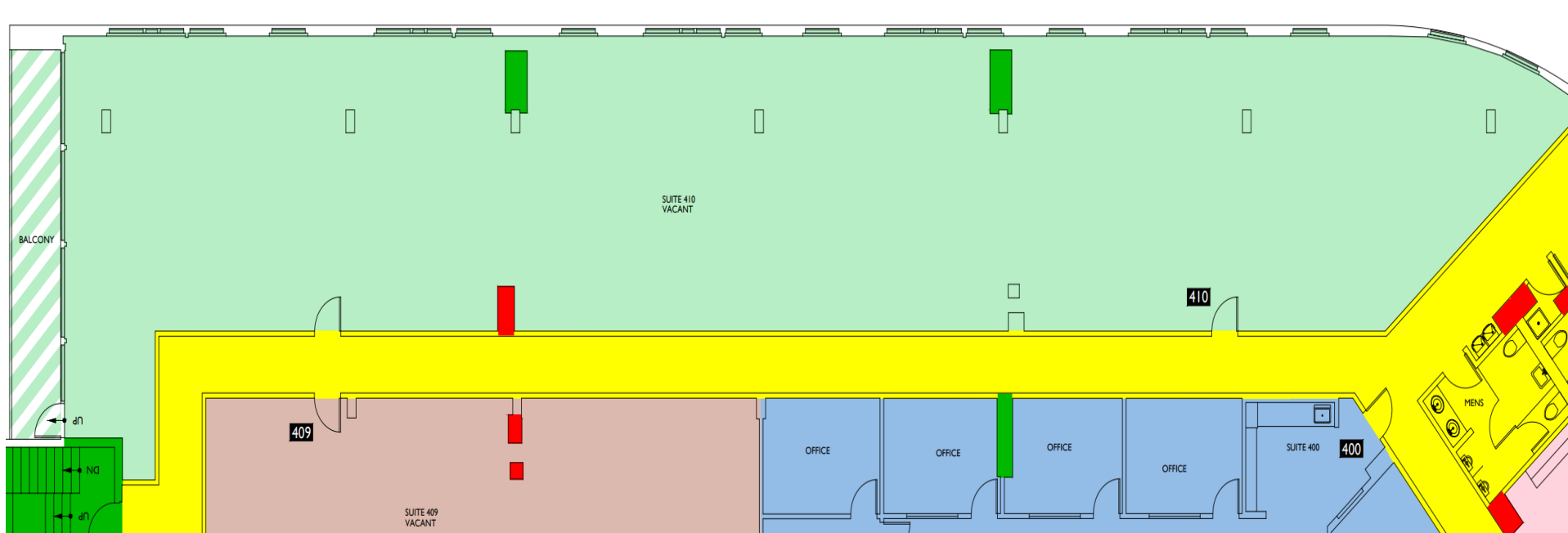
alex.marquez@blancacre.com



SOMI Center

5966 South Dixie Highway, Miami, FL 33143

Suite 410 | 5,694 RSF



LEASING CONTACTS



Blanca Commercial Real Estate, Inc.
Licensed Real Estate Broker
1450 Brickell Avenue, Suite 2060
Miami, Florida 33131

Andres del Corral
305.577.0271
andres.delcorral@blancacre.com

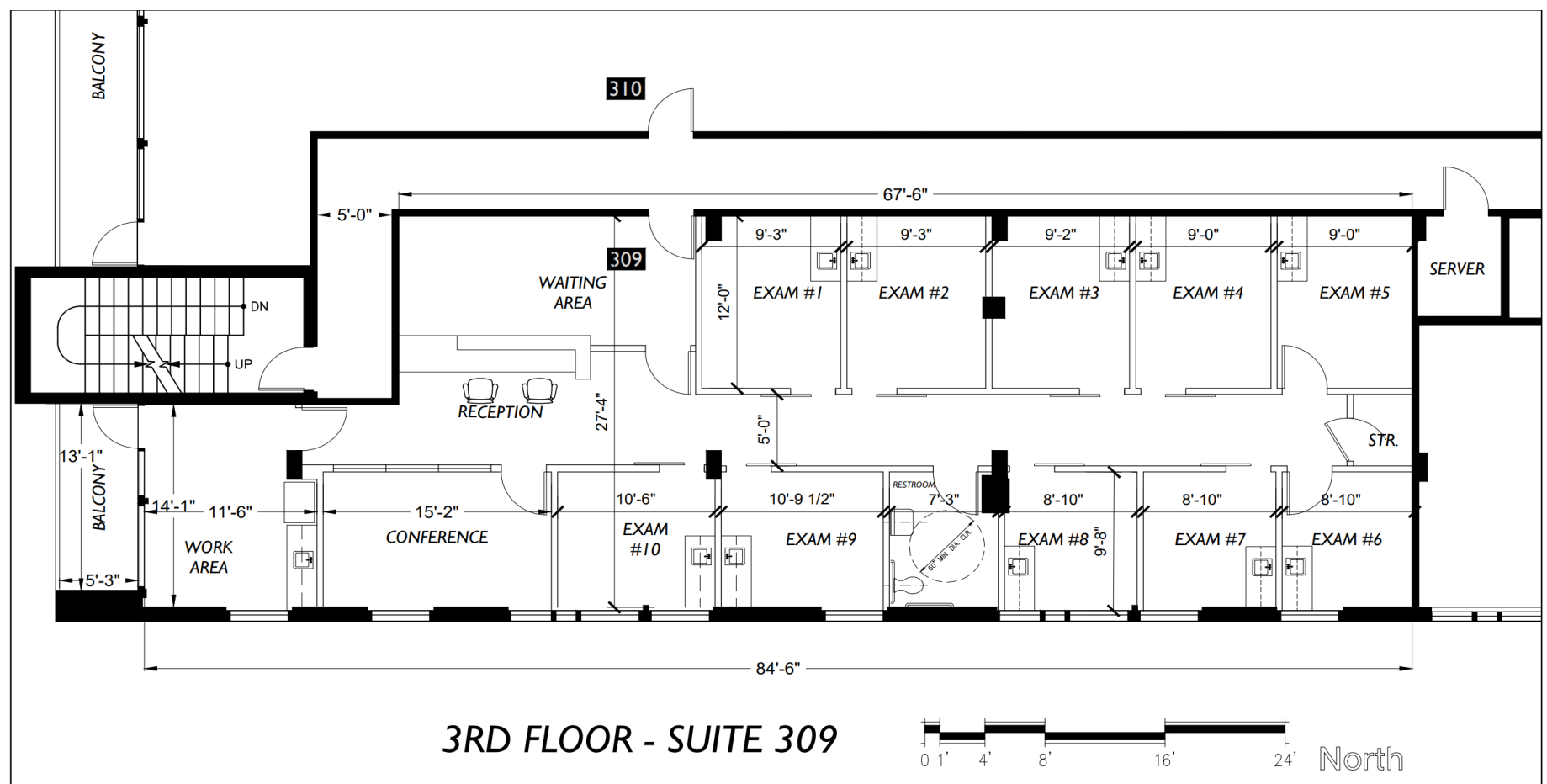
Alex Marquez
305.377.6589
alex.marquez@blancacre.com



SOMI Center

5966 South Dixie Highway, Miami, FL 33143

Suite 309 | 2,679 RSF
Spec Suite



LEASING CONTACTS



Blanca Commercial Real Estate, Inc.
Licensed Real Estate Broker
1450 Brickell Avenue, Suite 2060
Miami, Florida 33131

Andres del Corral
305.577.0271
andres.delcorral@blancacre.com

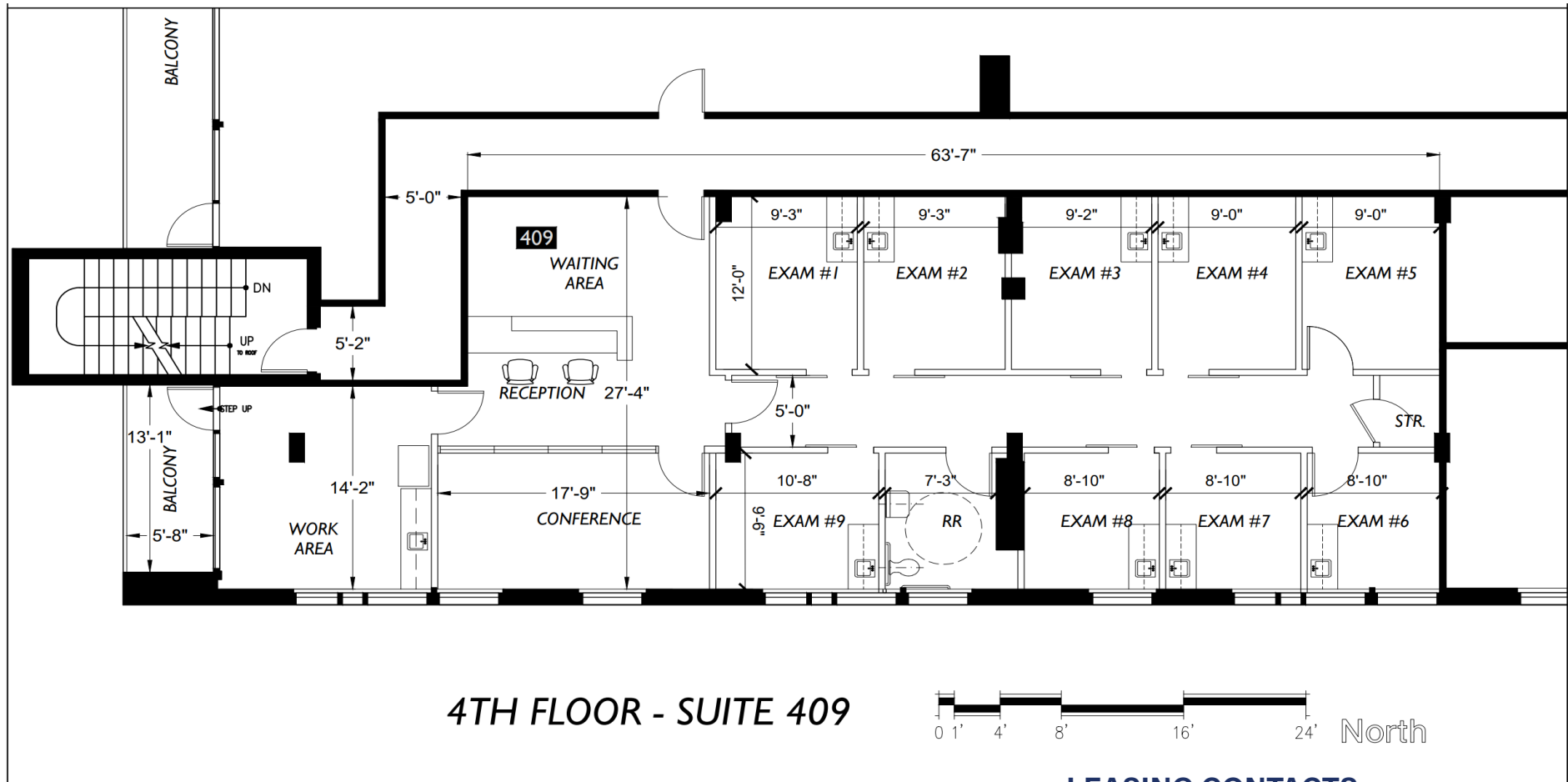
Alex Marquez
305.377.6589
alex.marquez@blancacre.com



SOMI Center

5966 South Dixie Highway, Miami, FL 33143

Suite 409 | 2,535 RSF
Spec Suite



LEASING CONTACTS



Blanca Commercial Real Estate, Inc.
Licensed Real Estate Broker
1450 Brickell Avenue, Suite 2060
Miami, Florida 33131

Andres del Corral
305.577.0271
andres.delcorral@blancacre.com

Alex Marquez
305.377.6589
alex.marquez@blancacre.com