



# FOR LEASE

OFFICE SPACE ONLY | AVAILABLE 10,330 SF - 22,545 SF  
PART OF LARGER 50,000 SF INDUSTRIAL BUILDING  
708 VINCENT AVE | COVINA | CA 91722



10,330 SF - 22,545 SF  
2 STORY OFFICE



FENCED  
YARD



49 - 60  
PARKING SPACES



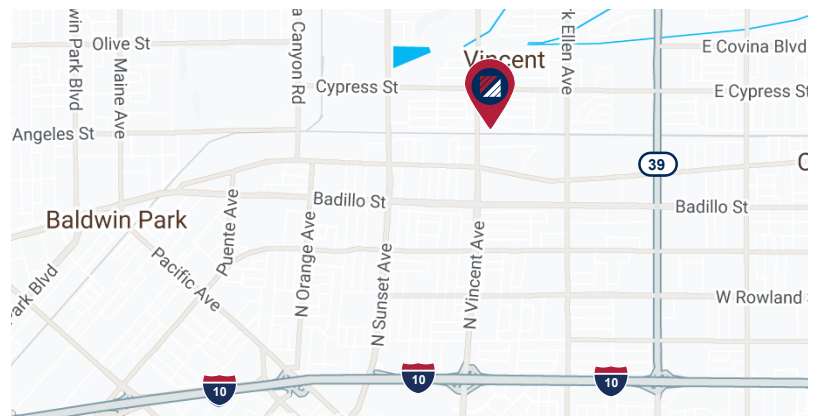
SIGNAGE  
ACCEPTABLE



FLEXIBLE  
LEASE TERMS

## PROPERTY HIGHLIGHTS:

- 2 Story Office: 10,330 SF - 22,545 SF
- Part of a Larger Industrial Building
- Warehouse Space Not Part of the Lease
- Pricing: Negotiable
- 49 - 60 Parking Spaces
- Fenced Yard
- Signage is Acceptable
- Flexible on Lease Term



## FOR MORE INFORMATION, PLEASE CONTACT:

**JACK NERSESIAN, MBA**  
Business Development Manager  
P: 818.636.3460 | M: 818.636.3460  
jack.nerseasian@daumcre.com  
CADRE #01717556

**NATHAN LARA, SIOR**  
Executive Vice President  
P: 562.692.5983  
nathan.lara@daumcre.com  
CADRE #01923385



**LARA TEAM**





FOR MORE INFORMATION, PLEASE CONTACT:

**JACK NERSESIAN, MBA**  
Business Development Manager  
P: 818.636.3460 | M: 818.636.3460  
jack.nersesian@daumcre.com  
CADRE #01717556

**NATHAN LARA, SIOR**  
Executive Vice President  
P: 562.692.5983  
nathan.lara@daumcre.com  
CADRE #01923385

PROPERTY PHOTOS

**DAUM**  
COMMERCIAL REAL ESTATE SERVICES

**LARA TEAM**





FOR MORE INFORMATION, PLEASE CONTACT:

**JACK NERSESIAN, MBA**  
Business Development Manager  
P: 818.636.3460 | M: 818.636.3460  
jack.nerseasian@daumcre.com  
CADRE #01717556

**NATHAN LARA, SIOR**  
Executive Vice President  
P: 562.692.5983  
nathan.lara@daumcre.com  
CADRE #01923385

PROPERTY PHOTOS

**DAUM**  
COMMERCIAL REAL ESTATE SERVICES

**LARA TEAM**





FOR MORE INFORMATION, PLEASE CONTACT:

**JACK NERSESIAN, MBA**  
Business Development Manager  
P: 818.636.3460 | M: 818.636.3460  
jack.nersesian@daumcre.com  
CADRE #01717556

**NATHAN LARA, SIOR**  
Executive Vice President  
P: 562.692.5983  
nathan.lara@daumcre.com  
CADRE #01923385

PROPERTY PHOTOS



**LARA TEAM**







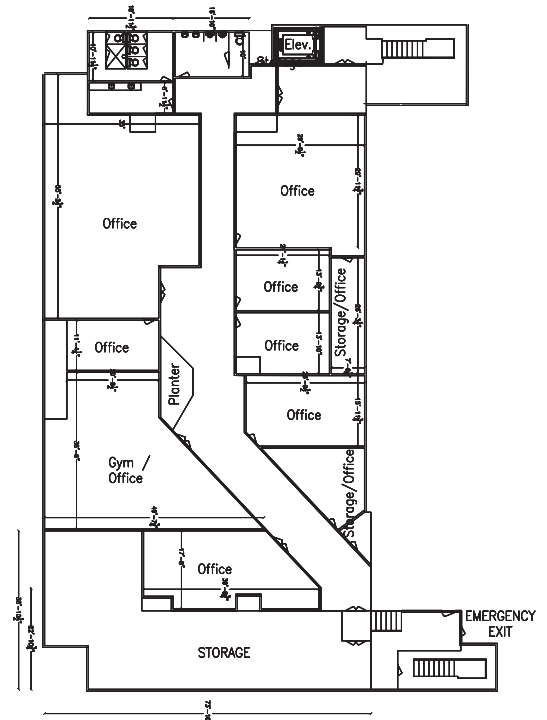
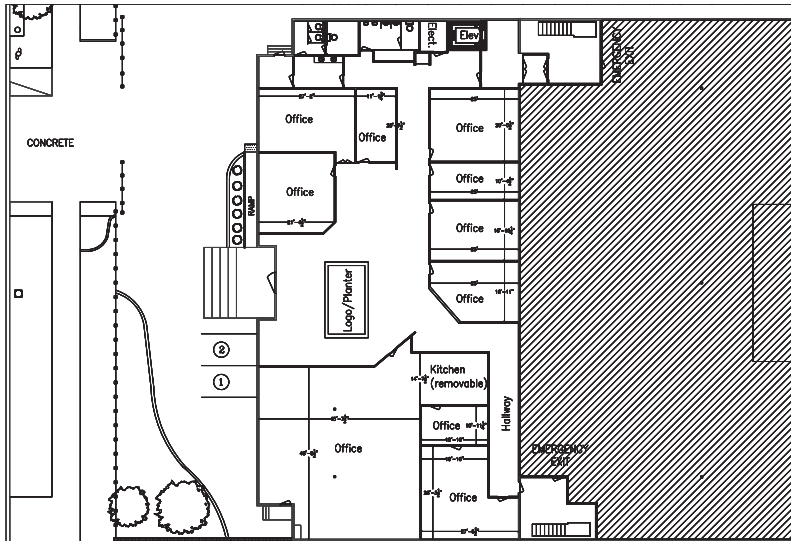
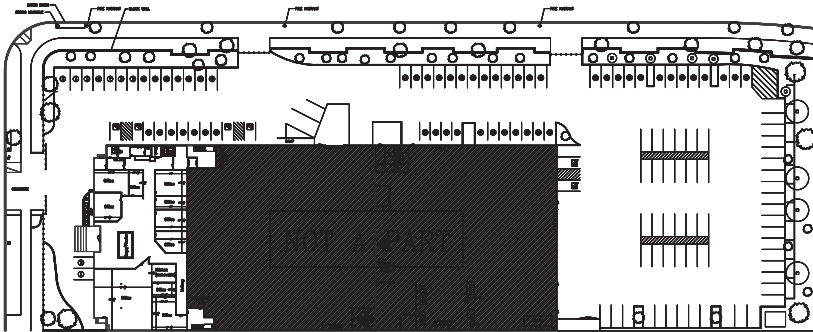
# TENANT LEASING 1ST & 2ND FLOOR

First Floor Approximately 11,468 Square Feet  
 Second Floor Approximately 11,077 Square Feet  
 60 Parking Spaces



\*All Numbered Parking Spaces are Available to the Tenant.

## SECOND FLOOR LAYOUT



FOR MORE INFORMATION, PLEASE CONTACT:

**JACK NERSESIAN, MBA**  
 Business Development Manager  
 P: 818.636.3460 | M: 818.636.3460  
 jack.nersesian@daumcre.com  
 CADRE #01717556

**NATHAN LARA, SIOR**  
 Executive Vice President  
 P: 562.692.5983  
 nathan.lara@daumcre.com  
 CADRE #01923385

FLOOR PLAN



**LARA TEAM**