



# 919 Central Avenue

Charlotte, NC 28204



## Available for Lease

+/- 2,090 SF Available in Plaza Midwood



Property Overview

# 919 Central Avenue

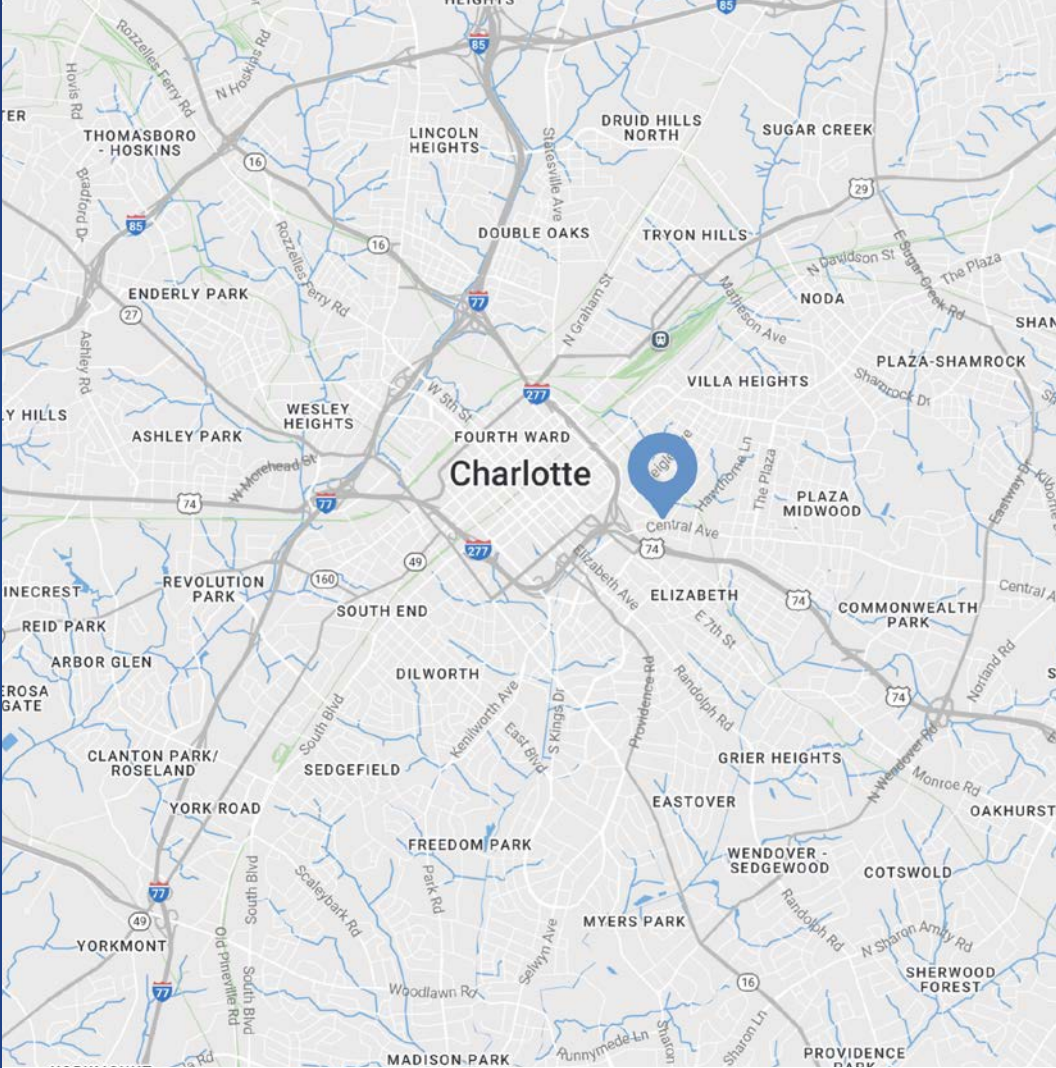
## Available for Lease

Prime retail opportunity in the heart of Plaza Midwood! This highly visible ± 2,090 SF street-front retail space at 919 Central Ave offers exceptional exposure at a signalized intersection with strong pedestrian and vehicular traffic. The first-floor suite is fully built-out and move-in ready, featuring a classic storefront presence, modern retail finishes, and excellent signage opportunities.

Located in one of Charlotte's most walkable neighborhoods, the property is surrounded by popular restaurants, boutiques, fitness concepts, and daily conveniences that consistently drive foot traffic. On-site parking and convenient transit access further enhance the accessibility of this rare offering. Ideal for boutique retail, service businesses, or experiential concepts, this space positions your brand in one of Charlotte's fastest-growing and most energetic corridors.

Property Details

|                |  |
|----------------|--|
| Address        | 919 Central Avenue   Charlotte, NC 28205 |
| Availability   | +/- 2,090 SF Available for Lease         |
| Year Built     | 1937   Recently renovated                |
| Access         | Full access from Central Avenue          |
| Use            | Suitable for retail or office            |
| Zoning         | NC - Neighborhood Center                 |
| Traffic Counts | Central Avenue   21,500 VPD              |
| Lease Rate     | \$45/SF NNN                              |



Demographics

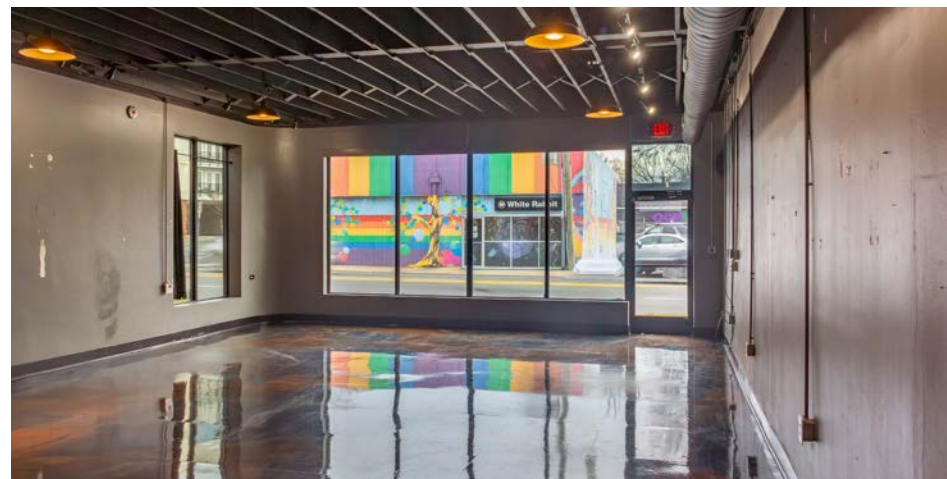
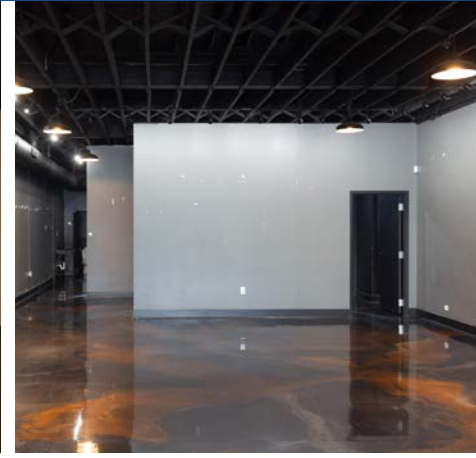
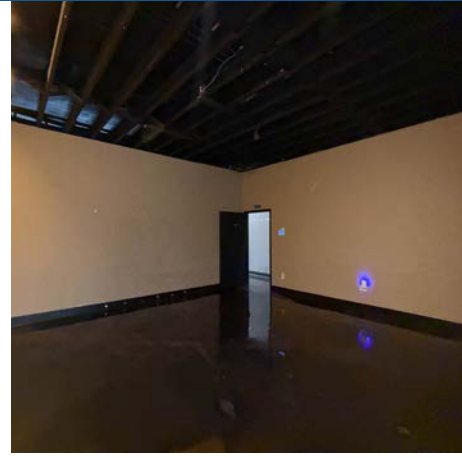
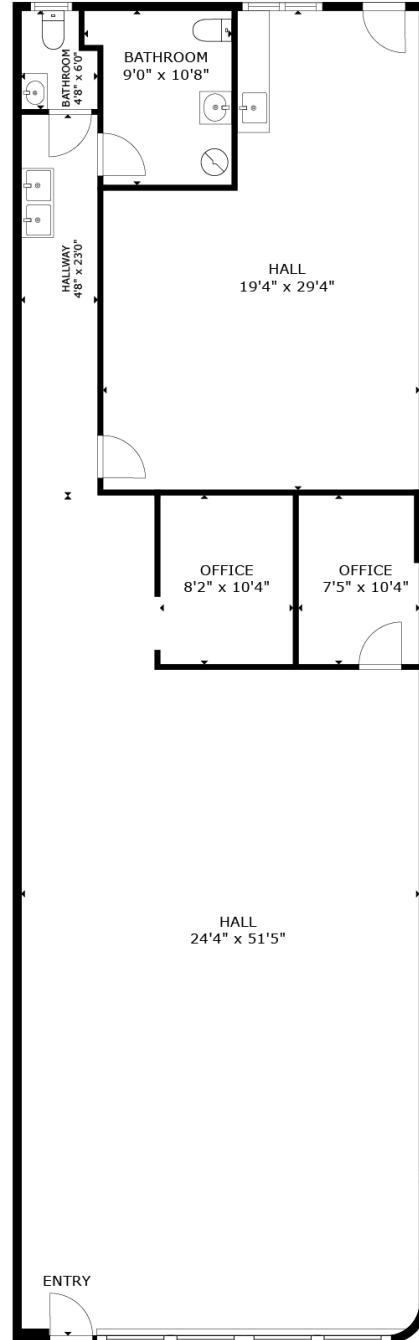
| RADIUS                  | 1 MILE    | 3 MILE    | 5 MILE    |
|-------------------------|-----------|-----------|-----------|
| 2025 Population         | 17,728    | 135,911   | 302,113   |
| Avg. Household Income   | \$141,321 | \$151,586 | \$134,075 |
| Median Household Income | \$93,635  | \$97,804  | \$80,759  |
| Households              | 9,918     | 71,841    | 141,333   |
| Daytime Employees       | 23,871    | 145,665   | 235,939   |

## Floor Plan

Available

+/- 2,090 SF

 Virtual Tour



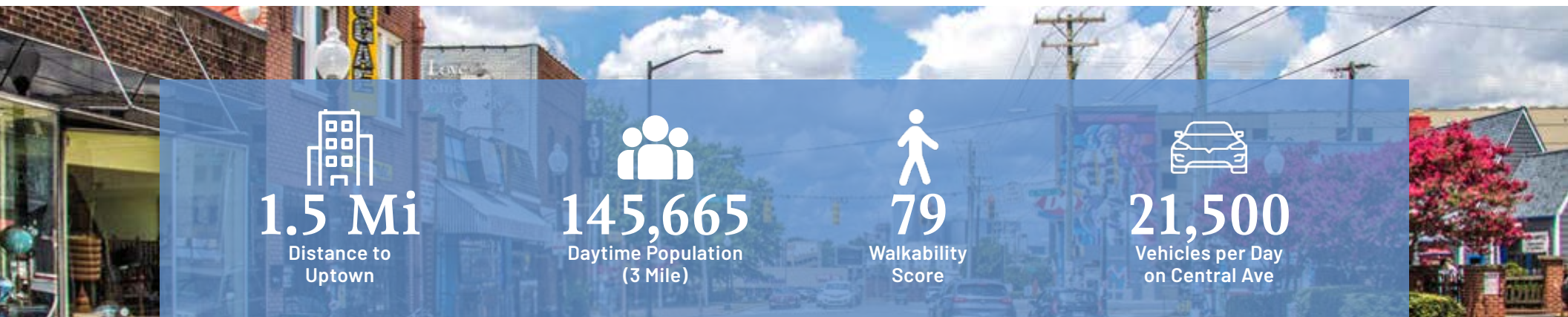




# Plaza Midwood

The go-to spot to meet, mingle, and unwind

Just a 1 mile cruise along Central Avenue from Uptown Charlotte will put you in a place where fashion, food, and art rule! Plaza Midwood is one of Charlotte's most unique, preeminent urban core neighborhoods. The neighborhood boasts a mixture of unique restaurants, art galleries, locally owned shops, popular bars, and live music venues. Recent years have witnessed its resurgence as a vibrant, highly sought after neighborhood with numerous upcoming and completed developments.



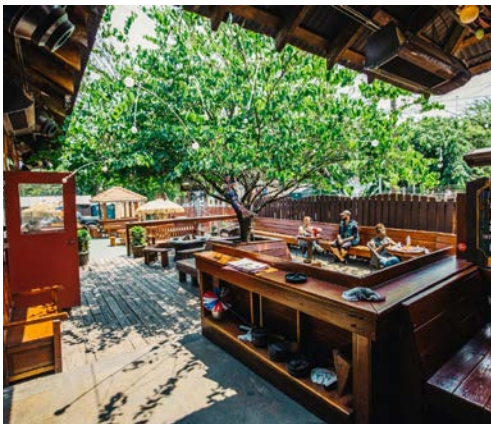
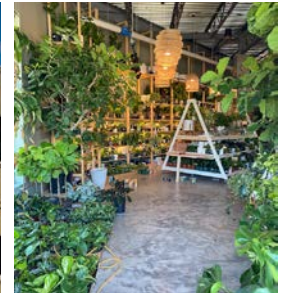
  
**1.5 Mi**  
Distance to Uptown

  
**145,665**  
Daytime Population (3 Mile)

  
**79**  
Walkability Score

  
**21,500**  
Vehicles per Day on Central Ave













Contact for Details

## Frank Jernigan

(704) 373-9797

frank@thenicholscompany.com

## Lauren Bremer

(980) 226 - 6911

lauren@thenicholscompany.com



### Website

[www.TheNicholsCompany.com](http://www.TheNicholsCompany.com)

### Phone

Office (704) 373-9797

Fax (704) 373-9798

### Address

1204 Central Avenue, Suite 201

Charlotte, NC 28204

This information has been obtained from sources believed to be reliable. While we do not doubt its accuracy, we have not verified it and make no guarantee, warranty or representation to independently confirm its accuracy and completeness.