



OFFICE/RETAIL BUILDING FOR LEASE

OYSTER POINT COMMONS

11721 JEFFERSON AVENUE, NEWPORT NEWS, VA 23608



OYSTER POINT COMMONS

11721 JEFFERSON AVENUE, NEWPORT NEWS, VA 23608

PROPERTY SUMMARY



PROPERTY DESCRIPTION

Located in Oyster Point Business District, this complex sits at the high traffic intersection of Jefferson Ave and Pilot House Road. These four buildings feature ample parking, two entrances with visibility and monument signage on Jefferson Avenue. On-site Management with good walkability to a variety of restaurants and residential neighborhoods. Close to I-64 and within blocks of Riverside Hospital & Sentara Port Warwick, Jefferson Lab & Tech Center. Short drive to Newport News/ Williamsburg Airport.

PROPERTY HIGHLIGHTS

- Monument signage on Jefferson Avenue
- Building signage possibility
- Two entrances with ample parking
- Dedicated Signalized Intersection
- Close proximity to Oyster Point City Center
- Easy ingress/egress to I64

OFFERING SUMMARY

Lease Rate: 17.50 SF/yr (Net of Janitorial)
Available SF: 2,233 - 3,000 SF

SPACES	LEASE RATE	SPACE SIZE
Suite 100	\$17.50 SF/yr	3,000 SF
Suite 103	\$17.50 SF/yr	2,233 SF

OYSTER POINT COMMONS

11721 JEFFERSON AVENUE, NEWPORT NEWS, VA 23608

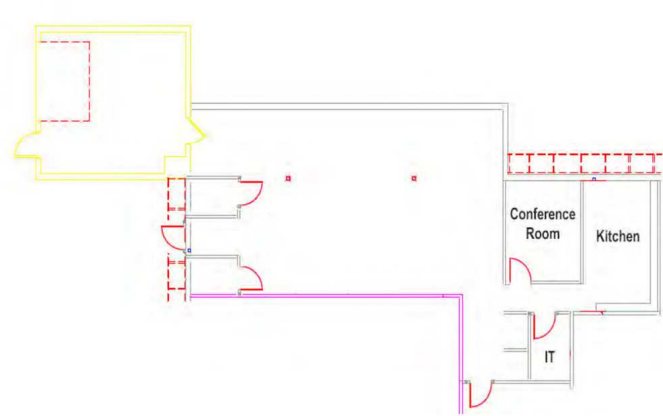
11721 | SUITES 100 & 103



SUITE 100 - 3,000 SF



SUITE 103 - 2,233 SF

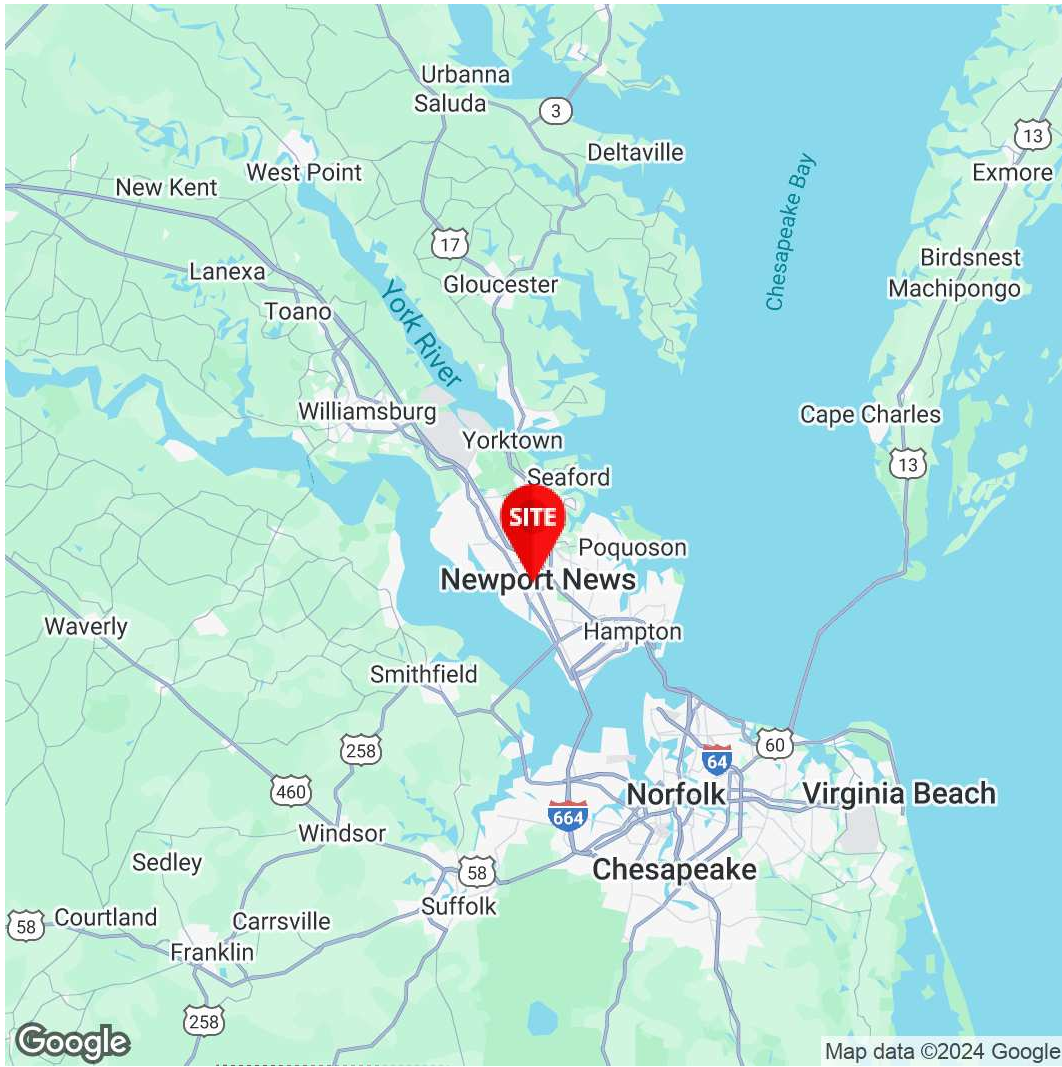


OYSTER POINT COMMONS

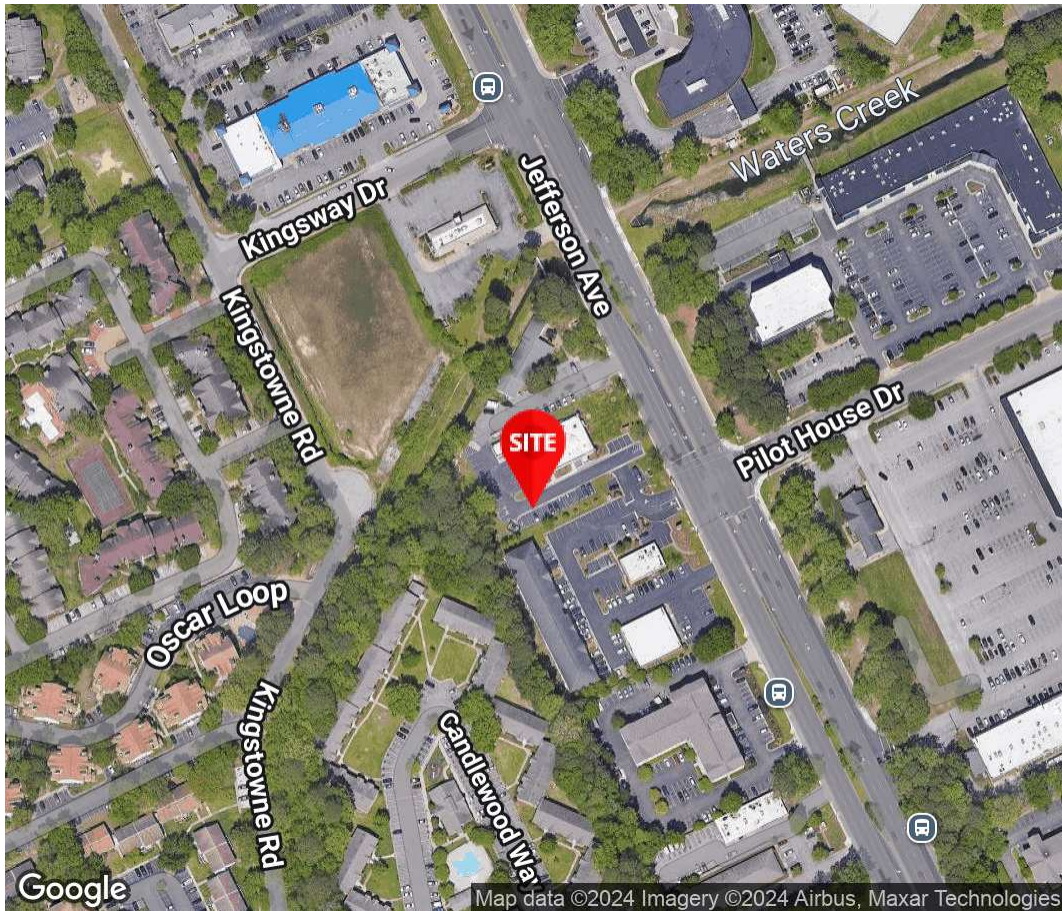
11721 JEFFERSON AVENUE, NEWPORT NEWS, VA 23608

LOCAL AREA





Elizabeth C. Paasch
AVP, Office Leasing and
Sales
757.333.4322
epaasch@divaris.com



The information contained herein should be considered confidential and remains the sole property of Divaris Real Estate, Inc. at all times. Although every effort has been made to ensure accuracy, no liability will be accepted for any errors or omissions. Disclosure of any information contained herein is prohibited except with the express written permission of Divaris Real Estate, Inc.