

# 64-01

GRAND AVENUE

CORNER OF 64TH STREET  
MASPETH | QUEENS






**SIZE:** *Ground Floor - 3,800 SF*

**FRONTAGE:** *75' wraparound*

**CEILING HEIGHTS:** *12'*

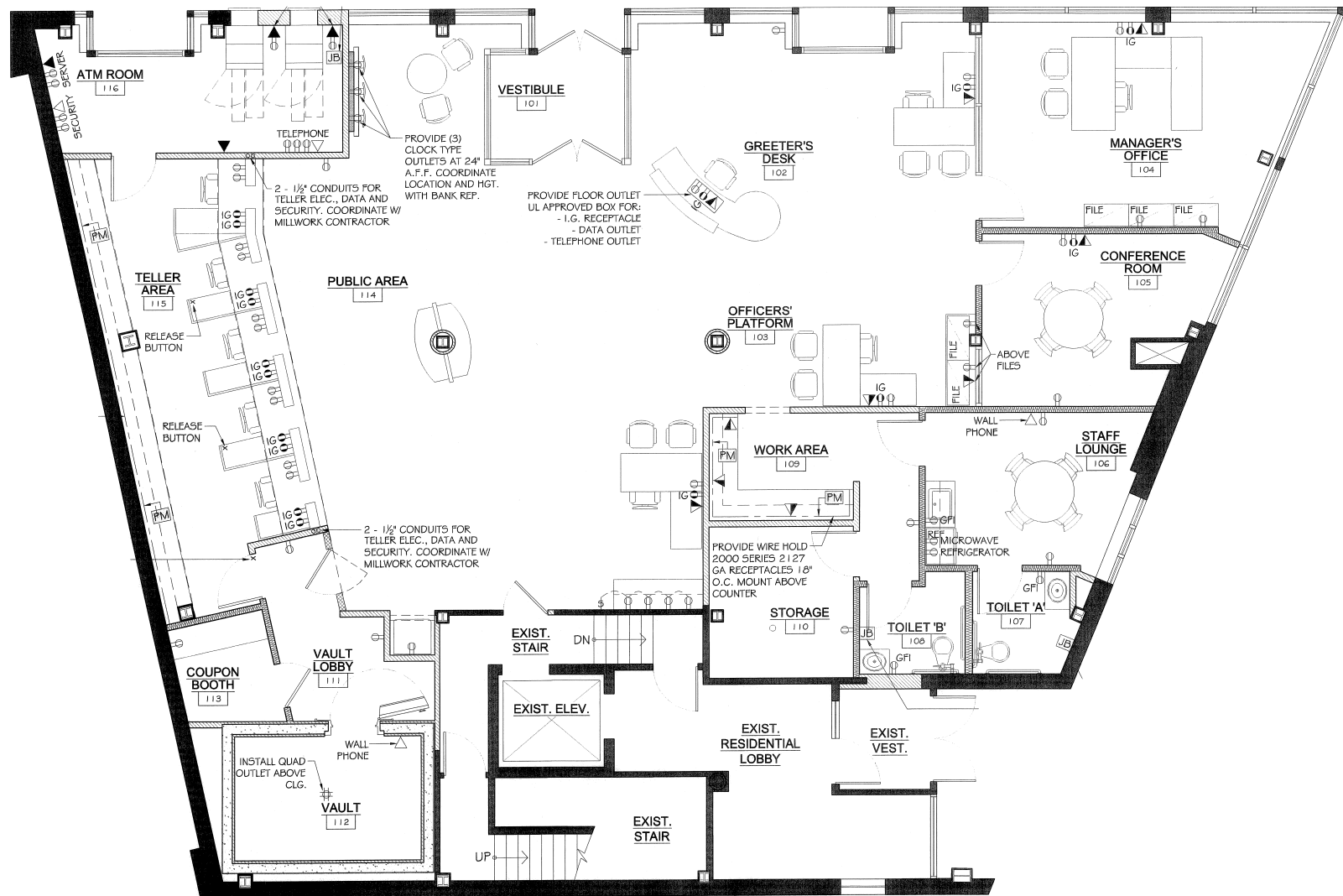
**POSSESSION:** *Immediate*

**TRANSPORTATION:** *B57, Q58, Q59, *

**HIGHLIGHTS:**

- All uses considered
- Formerly a bank with three (3) offices
- Parking available
- Air conditioned
- 1.2M households in a 5 mile radius
- Less than .25 miles from the LIE (I-495) and .5 miles from the BQE
- High foot traffic area in dense residential neighborhood
- Neighboring tenants include: *Benjamin Moore Paint, Laurel Blinds & Shade, Maspeth Sign, Ocean Prime, Moon Palace Kitchen*

FLOOR PLANS:  
GROUND FLOOR - 3,800 SF



## INTERIORS:



# 64-01

## GRAND AVENUE

CORNER OF 64TH STREET  
MASPETH | QUEENS

FOR MORE INFORMATION,  
PLEASE CONTACT:

**NATHAN ABALLI**

917.915.8763 | [NAballi@ksrny.com](mailto:NAballi@ksrny.com)

**GEORGE LISA**

917.480.1174 | [GLisa@ksrny.com](mailto:GLisa@ksrny.com)

**OHAD BABO**

646.234.9350 | [OhadB@ksrny.com](mailto:OhadB@ksrny.com)

