

STR # 35402 / Created January 19, 2022

Monthly STAR Report : Quality Inn & Suites Jackson

For the Month of: December 2021

Currency: US Dollar / Competitive Set Data Excludes Subject Property



Table Of Contents	1
Monthly Performance at a Glance	2
STAR Summary	3
Competitive Set Report	4
Response Report	5
Day of Week & Weekday/Weekend	6
Daily Data for the Month	7
Help	8

Corporate North American Headquarters
T: +1 (615) 824 8664
support@str.com www.str.com

International Headquarters
T: +44 (0) 207 922 1930
hotelinfo@str.com www.str.com

2022 © CoStar Group. This STR Report is a publication of STR, LLC and STR Global, Ltd., CoStar Group companies, and is intended solely for use by paid subscribers. The information in the STR Report is provided on an "as is" and "as available" basis and should not be construed as investment, tax, accounting or legal advice. Reproduction or distribution of this STR Report, in whole or part, without written permission is prohibited and subject to legal action. If you have received this report and are NOT a subscriber to this STR Report, please contact us immediately. Source: 2022 STR, LLC / STR Global, Ltd. trading as "STR".

Tab 2 - Monthly Performance at a Glance - My Property vs. Competitive Set

Quality Inn & Suites Jackson 5723 I-55 Jackson, MS 39206 Phone: (601) 957-8557

STR # 35402 ChainID: MS375 MgtCo: MMI Hotel Group Owner: Desai Hotel Group

For the Month of: December 2021 Date Created: January 19, 2022 Monthly Competitive Set Data Excludes Subject Property

December 2021

	Occupancy (%)			ADR			RevPAR		
	My Prop	Comp Set	Index (MPI)	My Prop	Comp Set	Index (ARI)	My Prop	Comp Set	Index (RGI)
Current Month	33.3	30.6	108.7	67.51	53.68	125.8	22.45	16.43	136.7
Year To Date	43.1	36.1	119.4	62.58	58.75	106.5	26.97	21.21	127.1
Running 3 Month	34.3	32.8	104.5	66.03	57.09	115.7	22.62	18.71	120.9
Running 12 Month	43.1	36.1	119.4	62.58	58.75	106.5	26.97	21.21	127.1

December 2021 vs. 2020 Percent Change (%)

	Occupancy			ADR			RevPAR		
	My Prop	Comp Set	Index (MPI)	My Prop	Comp Set	Index (ARI)	My Prop	Comp Set	Index (RGI)
Current Month	-10.1	8.1	-16.8	28.1	-2.3	31.1	15.2	5.6	9.1
Year To Date	26.5	0.5	25.8	13.5	3.0	10.1	43.5	3.6	38.6
Running 3 Month	0.2	5.9	-5.4	16.9	-0.7	17.7	17.1	5.1	11.4
Running 12 Month	26.5	0.5	25.8	13.5	3.0	10.1	43.5	3.6	38.6

Tab 3 - STAR Summary - My Property vs. Comp Set and Industry Segments

Quality Inn & Suites Jackson 5723 I-55 Jackson, MS 39206 Phone: (601) 957-8557

STR # 35402 ChainID: MS375 MgtCo: MMI Hotel Group Owner: Desai Hotel Group

For the Month of: December 2021 Date Created: January 19, 2022 Monthly Competitive Set Data Excludes Subject Property

	Occupancy (%)							
	Current Month	% Chg	Year to Date	% Chg	Running 3 Month	% Chg	Running 12 Month	% Chg
Quality Inn & Suites Jackson	33.3	-10.1	43.1	26.5	34.3	0.2	43.1	26.5
Market: Jackson, MS	45.8	14.7	56.3	26.1	52.1	19.2	56.3	26.1
Market Class: Midscale Class	41.3	10.0	53.4	21.6	48.1	13.7	53.4	21.6
Submarket: Jackson I-55 North/Clinton, MS	47.2	14.1	57.3	20.6	52.9	16.6	57.3	20.6
Submarket Scale: Midscale Chains	46.5	9.7	55.9	23.6	51.9	18.9	55.9	23.6
Competitive Set: Competitors	30.6	8.1	36.1	0.5	32.8	5.9	36.1	0.5

	Average Daily Rate							
	Current Month	% Chg	Year to Date	% Chg	Running 3 Month	% Chg	Running 12 Month	% Chg
Quality Inn & Suites Jackson	67.51	28.1	62.58	13.5	66.03	16.9	62.58	13.5
Market: Jackson, MS	86.08	21.4	85.19	16.5	89.34	22.3	85.19	16.5
Market Class: Midscale Class	72.33	13.9	71.86	12.4	74.64	14.4	71.86	12.4
Submarket: Jackson I-55 North/Clinton, MS	86.89	24.1	85.27	18.2	90.07	24.1	85.27	18.2
Submarket Scale: Midscale Chains	88.93	19.4	88.75	15.3	93.35	20.3	88.75	15.3
Competitive Set: Competitors	53.68	-2.3	58.75	3.0	57.09	-0.7	58.75	3.0

	RevPAR							
	Current Month	% Chg	Year to Date	% Chg	Running 3 Month	% Chg	Running 12 Month	% Chg
Quality Inn & Suites Jackson	22.45	15.2	26.97	43.5	22.62	17.1	26.97	43.5
Market: Jackson, MS	39.43	39.2	47.93	47.0	46.52	45.8	47.93	47.0
Market Class: Midscale Class	29.91	25.3	38.35	36.7	35.92	30.1	38.35	36.7
Submarket: Jackson I-55 North/Clinton, MS	40.99	41.6	48.83	42.6	47.64	44.7	48.83	42.6
Submarket Scale: Midscale Chains	41.32	31.1	49.59	42.5	48.43	42.9	49.59	42.5
Competitive Set: Competitors	16.43	5.6	21.21	3.6	18.71	5.1	21.21	3.6

	Census/Sample - Properties & Rooms				
	Census		Sample		Sample %
	Properties	Rooms	Properties	Rooms	Rooms
Market: Jackson, MS	135	11336	105	9190	81.1
Market Class: Midscale Class	20	1443	16	1166	80.8
Submarket: Jackson I-55 North/Clinton, MS	57	5205	49	4493	86.3
Submarket Scale: Midscale Chains	18	1564	18	1564	100.0
Competitive Set: Competitors	4	403	4	403	100.0

Supply			
Month % Chg	YTD % Chg	Run 3 Mon % Chg	Run 12 Mon % Chg
0.0	36.2	0.0	36.2
3.1	0.5	1.0	0.5
-8.6	-2.9	-8.6	-2.9
-2.8	0.4	-2.8	0.4
-1.5	-2.1	-5.9	-2.1
0.0	0.0	0.0	0.0

Demand			
Month % Chg	YTD % Chg	Run 3 Mon % Chg	Run 12 Mon % Chg
-10.1	72.3	0.2	72.3
18.3	26.8	20.5	26.8
0.6	18.1	4.0	18.1
10.9	21.1	13.2	21.1
8.1	21.1	11.9	21.1
8.1	0.5	5.9	0.5

Revenue			
Month % Chg	YTD % Chg	Run 3 Mon % Chg	Run 12 Mon % Chg
15.2	95.5	17.1	95.5
43.6	47.7	47.3	47.7
14.6	32.8	19.0	32.8
37.6	43.2	40.6	43.2
29.1	39.6	34.5	39.6
5.6	3.6	5.1	3.6

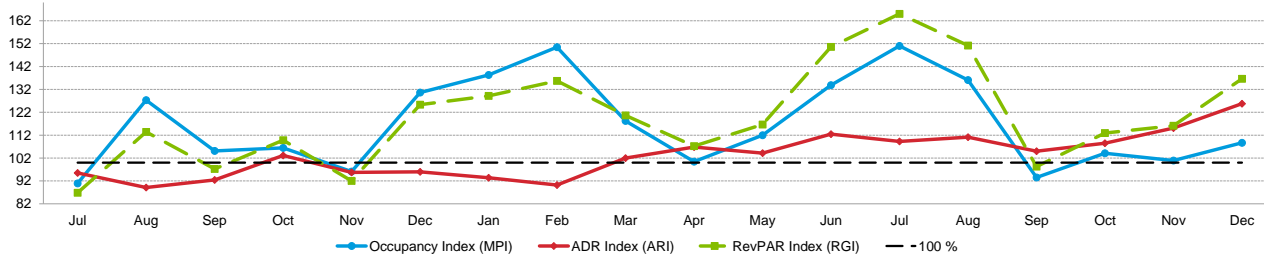
Tab 4 - Competitive Set Report

Quality Inn & Suites Jackson 5723 I-55 Jackson, MS 39206 Phone: (601) 957-8557

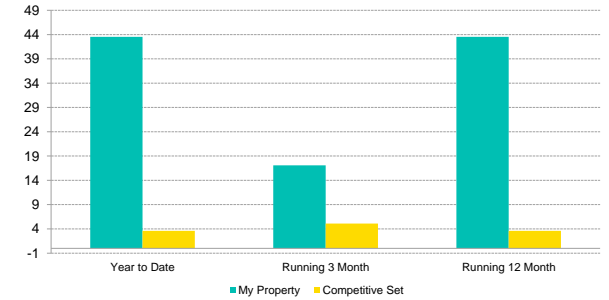
STR # 35402 ChainID: MS375 MgtCo: MMI Hotel Group Owner: Desai Hotel Group

For the Month of: December 2021 Date Created: January 19, 2022 Monthly Competitive Set Data Excludes Subject Property

Monthly Indexes



RevPAR Percent Change



Occupancy (%)	2020						2021												Year To Date			Running 3 Month			Running 12 Month		
	Jul	Aug	Sep	Oct	Nov	Dec	Jan	Feb	Mar	Apr	May	Jun	Jul	Aug	Sep	Oct	Nov	Dec	2019	2020	2021	2019	2020	2021	2019	2020	2021
My Property	41.1	41.4	36.1	35.4	30.0	37.0	39.2	45.7	45.3	43.5	45.5	51.2	56.8	46.2	41.3	38.2	31.2	33.3	50.1	34.1	43.1	34.2	34.3	50.1	34.1	43.1	
Competitive Set	45.2	32.5	34.3	33.3	31.3	28.3	28.4	30.3	38.3	43.3	40.6	38.2	37.6	34.0	44.2	36.7	30.9	30.6	41.7	35.9	36.1	40.3	30.9	32.8	41.7	35.9	36.1
Index (MPI)	90.9	127.3	105.2	106.5	96.1	130.6	138.3	150.5	118.2	100.4	112.0	133.9	151.0	136.1	93.5	104.1	100.9	108.7	120.0	94.9	119.4	110.5	104.5	120.0	94.9	119.4	
Rank	3 of 5	3 of 5	3 of 5	3 of 5	4 of 5	1 of 5	2 of 5	1 of 5	2 of 5	2 of 5	2 of 5	1 of 5	1 of 5	1 of 5	4 of 5	2 of 5	2 of 5	2 of 5	2 of 5	3 of 5	2 of 5	3 of 5	2 of 5	2 of 5	3 of 5	2 of 5	

% Chg	2020						2021												Year To Date			Running 3 Month			Running 12 Month			
	Jul	Aug	Sep	Oct	Nov	Dec	Jan	Feb	Mar	Apr	May	Jun	Jul	Aug	Sep	Oct	Nov	Dec	2019	2020	2021	2019	2020	2021	2019	2020	2021	
My Property	-24.3	-2.3	-13.3								321.5	60.7	24.7	38.1	11.8	14.4	7.9	3.8	-10.1	10.6	-32.0	26.5			0.2	10.6	-32.0	26.5
Competitive Set	-7.8	-27.9	-15.5	-27.1	-26.4	-13.9	-20.9	-30.4	2.4	81.3	6.1	-19.7	-16.8	4.6	28.6	10.4	-1.1	8.1	7.3	-14.0	0.5	10.2	-23.3	5.9	7.3	-14.0	0.5	
Index (MPI)	-17.9	35.5	2.5								132.5	51.4	55.3	66.1	6.9	-11.0	-2.2	5.0	-16.8	3.0	-20.9	25.8			-5.4	3.0	-20.9	25.8
Rank	4 of 5	2 of 5	3 of 5								1 of 5	1 of 5	1 of 5	1 of 5	2 of 5	4 of 5	3 of 5	3 of 5	5 of 5	2 of 5	5 of 5	1 of 5			3 of 5	2 of 5	5 of 5	1 of 5

ADR	2020						2021												Year To Date			Running 3 Month			Running 12 Month		
	Jul	Aug	Sep	Oct	Nov	Dec	Jan	Feb	Mar	Apr	May	Jun	Jul	Aug	Sep	Oct	Nov	Dec	2019	2020	2021	2019	2020	2021	2019	2020	2021
My Property	55.46	54.99	54.46	61.99	54.67	52.71	52.34	53.69	59.07	62.44	60.83	64.98	63.95	68.84	66.94	65.99	64.46	67.51	69.84	55.16	62.58	56.51	66.03	69.84	55.16	62.58	
Competitive Set	58.08	61.70	58.91	60.09	57.11	54.93	56.05	59.53	57.90	58.46	58.38	57.77	58.52	61.95	63.74	60.81	56.01	53.68	57.23	57.02	58.75	56.43	57.52	57.09	57.23	57.02	58.75
Index (ARI)	95.5	89.1	92.5	103.2	95.7	96.0	93.4	90.2	102.0	106.8	104.2	112.5	109.3	111.1	105.0	108.5	115.1	125.8	122.0	96.7	106.5	98.2	115.7	122.0	96.7	106.5	
Rank	3 of 5	4 of 5	4 of 5	2 of 5	4 of 5	4 of 5	4 of 5	4 of 5	3 of 5	3 of 5	3 of 5	3 of 5	3 of 5	3 of 5	2 of 5	2 of 5	2 of 5	2 of 5	2 of 5	3 of 5	3 of 5	4 of 5	2 of 5	2 of 5	3 of 5	3 of 5	

% Chg	2020						2021												Year To Date			Running 3 Month			Running 12 Month			
	Jul	Aug	Sep	Oct	Nov	Dec	Jan	Feb	Mar	Apr	May	Jun	Jul	Aug	Sep	Oct	Nov	Dec	2019	2020	2021	2019	2020	2021	2019	2020	2021	
My Property	-18.7	-19.2	-23.4								35.7	18.7	14.6	15.3	25.2	22.9	6.5	17.9	28.1	-3.3	-21.0	13.5			16.9	-3.3	-21.0	13.5
Competitive Set	1.1	12.1	5.1	6.2	-0.5	-0.1	2.9	3.0	5.2	12.5	6.7	0.0	0.8	0.4	8.2	1.2	-1.9	-2.3	0.3	-0.4	3.0	0.6	1.9	-0.7	0.3	-0.4	3.0	
Index (ARI)	-19.6	-27.9	-27.2								20.6	11.2	14.5	24.7	13.6	5.2	20.2	31.1	-3.6	-20.7	10.1			17.7	-3.6	-20.7	10.1	
Rank	5 of 5	5 of 5	5 of 5								1 of 5	1 of 5	1 of 5	1 of 5	1 of 5	1 of 5	3 of 5	2 of 5	1 of 5	3 of 5	5 of 5	1 of 5			2 of 5	3 of 5	5 of 5	1 of 5

RevPAR	2020						2021												Year To Date			Running 3 Month			Running 12 Month		
	Jul	Aug	Sep	Oct	Nov	Dec	Jan	Feb	Mar	Apr	May	Jun	Jul	Aug	Sep	Oct	Nov	Dec	2019	2020	2021	2019	2020	2021	2019	2020	2021
My Property	22.82	22.74	19.67	21.94	16.42	19.49	20.54	24.51	26.78	27.14	27.65	33.24	36.34	31.83	27.66	25.22	20.11	22.45	34.98	18.79	26.97	19.32	22.62	34.98	18.79	26.97	
Competitive Set	26.28	20.05	20.23	19.98	17.85	15.55	15.90	18.06	22.20	25.31	23.69	22.07	22.02	21.05	28.16	22.33	17.32	16.43	23.89	20.48	21.21	22.75	17.80	18.71	23.89	20.48	21.21
Index (RGI)	86.8	113.4	97.2	109.8	92.0	125.3	129.2	135.7	120.6	107.2	116.7	150.6	165.0	151.2	98.2	112.9	116.1	136.7	146.4	91.8	127.1	108.5	120.9	146.4	91.8	127.1	
Rank	4 of 5	3 of 5	3 of 5	2 of 5	4 of 5	1 of 5	1 of 5	1 of 5	2 of 5	2 of 5	2 of 5	1 of 5	1 of 5	1 of 5	3 of 5	2 of 5	2 of 5	2 of 5	1 of 5	4 of 5	1 of 5	2 of 5	2 of 5	1 of 5	4 of 5	1 of 5	

% Chg	2020						2021												Year To Date			Running 3 Month			Running 12 Month			
	Jul	Aug	Sep	Oct	Nov	Dec	Jan	Feb	Mar	Apr	May	Jun	Jul	Aug	Sep	Oct	Nov	Dec	2019	2020	2021	2019	2020	2021	2019	2020	2021	
My Property	-38.5	-21.1	-33.6								471.8	90.7	42.8	59.2	40.0	40.7	14.9	22.4	15.2	6.9	-46.3	43.5			17.1	6.9	-46.3	43.5
Competitive Set	-6.8	-19.2	-11.1	-22.6	-26.8	-13.9	-18.7	-28.3	7.8	103.9	13.3	-19.7	-16.2	5.0	39.2	11.7	-3.0	5.6	7.6	-14.3	3.6	10.9	-21.8	5.1	7.6	-14.3	3.6	
Index (RGI)	-34.0	-2.3	-25.3								180.5	68.4	77.8	90.1	33.3	1.0	2.8	26.2	9.1	-0.6	-37.3	38.6			11.4	-0.6	-37.3	38.6
Rank	5 of 5	4 of 5	4 of 5								1 of 5	1 of 5	1 of 5	1 of 5	2 of 5	2 of 5	3 of 5	2 of 5	2 of 5	3 of 5	5 of 5	1 of 5			2 of 5	3 of 5	5 of 5	1 of 5

Tab 5 - Response Report

Quality Inn & Suites Jackson 5723 I-55 Jackson, MS 39206 Phone: (601) 957-8557
 STR # 35402 ChainID: MS375 MgtCo: MMI Hotel Group Owner: Desai Hotel Group
 For the Month of: December 2021 Date Created: January 19, 2022

This Year

- Dec 24th - Christmas Eve
- Dec 25th - Christmas Day
- Dec 26th - First Day of Kwanzaa
- Dec 31st - New Year's Eve

December 2021 (This Year)

Sun	Mon	Tue	Wed	Thu	Fri	Sat
			1	2	3	4
5	6	7	8	9	10	11
12	13	14	15	16	17	18
19	20	21	22	23	24	25
26	27	28	29	30	31	

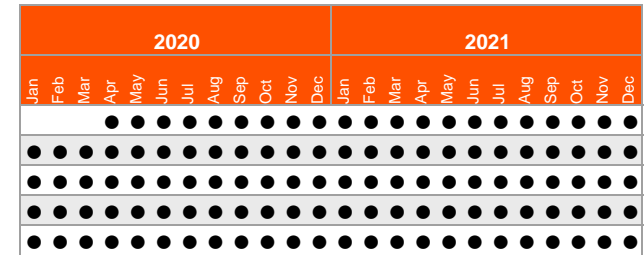
December 2020 (Last Year)

Sun	Mon	Tue	Wed	Thu	Fri	Sat
		1	2	3	4	5
6	7	8	9	10	11	12
13	14	15	16	17	18	19
20	21	22	23	24	25	26
27	28	29	30	31		

Last Year

- Dec 11th - First Day of Hanukkah
- Dec 24th - Christmas Eve
- Dec 25th - Christmas Day
- Dec 26th - First Day of Kwanzaa
- Dec 31st - New Year's Eve

STR#	Name	City, State	Zip	Phone	Rooms	Open Date
35402	Quality Inn & Suites Jackson	Jackson, MS	39206	(601) 957-8557	78	199712
6690	Red Roof Inn Jackson North Ridgeland	Ridgeland, MS	39157	(601) 956-7707	103	198507
11020	Comfort Inn Jackson	Jackson, MS	39206	(601) 956-3611	119	198510
40534	Baymont by Wyndham Jackson Ridgeland	Jackson, MS	39206	(601) 206-1616	121	200008
41458	La Quinta Inns & Suites Jackson North	Jackson, MS	39206	(601) 956-8686	60	200106
					481	



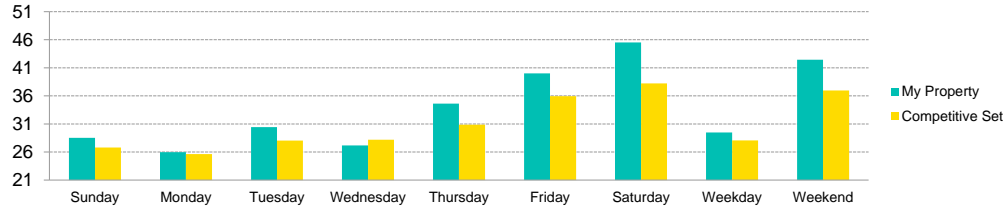
Data received:

- = Monthly Only
- = Monthly & Daily

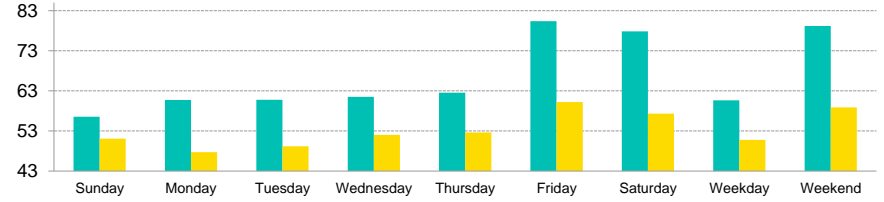
Tab 6 - Day of Week and Weekday/Weekend Report

Quality Inn & Suites Jackson 5723 I-55 Jackson, MS 39206 Phone: (601) 957-8557
 STR # 35402 ChainID: MS375 MgtCo: MMI Hotel Group Owner: Desai Hotel Group
 For the Month of: December 2021 Date Created: January 19, 2022 Monthly Competitive Set Data Excludes Subject Property

Current Month Occupancy



Current Month ADR



Day of Week	Time Period	Occupancy (%)			Average Daily Rate			RevPAR											
		My Property	Competitive Set	Index (MPI)	My Property	Competitive Set	Index (ARI)	My Property	Competitive Set	Index (RGI)									
Sunday	Current Month	28.5	-2.2	26.8	23.1	106.4	-20.5	56.55	13.2	51.06	-1.8	110.8	15.3	16.13	10.7	13.68	20.8	117.9	-8.3
	Year To Date	37.0	40.3	30.5	3.9	121.2	34.9	59.63	11.0	56.12	2.7	106.3	8.2	22.07	55.8	17.13	6.7	128.8	46.0
	Running 3 Month	28.3	7.1	28.6	16.7	99.1	-8.2	59.26	11.0	52.73	-2.5	112.4	13.8	16.77	18.9	15.06	13.8	111.4	4.5
	Running 12 Month	37.0	40.3	30.5	3.9	121.2	34.9	59.63	11.0	56.12	2.7	106.3	8.2	22.07	55.8	17.13	6.7	128.8	46.0
Monday	Current Month	26.0	-12.0	25.6	8.4	101.3	-18.8	60.71	20.1	47.73	-10.7	127.2	34.5	15.76	5.7	12.23	-3.2	128.9	9.2
	Year To Date	34.2	29.4	30.5	-3.5	112.0	34.1	58.07	8.9	54.67	0.1	106.2	8.8	19.86	41.0	16.70	-3.3	118.9	45.9
	Running 3 Month	27.8	15.1	28.0	4.8	99.2	9.9	59.33	13.7	51.37	-6.8	115.5	22.1	16.50	30.9	14.41	-2.4	114.5	34.1
	Running 12 Month	34.2	29.4	30.5	-3.5	112.0	34.1	58.07	8.9	54.67	0.1	106.2	8.8	19.86	41.0	16.70	-3.3	118.9	45.9
Tuesday	Current Month	30.4	0.6	28.0	13.9	108.6	-11.7	60.78	19.3	49.20	-8.7	123.5	30.7	18.51	20.1	13.80	4.0	134.2	15.5
	Year To Date	36.5	33.8	32.3	-4.9	113.1	40.7	58.87	10.2	55.73	0.2	105.6	10.1	21.50	47.5	17.99	-4.7	119.5	54.8
	Running 3 Month	28.3	14.8	28.4	2.4	99.8	12.1	59.56	12.4	52.21	-8.1	114.1	22.4	16.86	29.0	14.81	-5.9	113.8	37.2
	Running 12 Month	36.5	33.8	32.3	-4.9	113.1	40.7	58.87	10.2	55.73	0.2	105.6	10.1	21.50	47.5	17.99	-4.7	119.5	54.8
Wednesday	Current Month	27.2	-19.1	28.2	21.4	96.4	-33.3	61.49	21.9	52.02	-0.4	118.2	22.4	16.71	-1.3	14.66	20.9	114.0	-18.4
	Year To Date	38.6	41.1	33.6	0.5	114.7	40.4	58.47	2.5	56.00	1.3	104.4	1.2	22.56	44.6	18.84	1.8	119.8	42.1
	Running 3 Month	27.5	-1.4	30.0	10.9	91.7	-11.1	59.56	-7.8	53.45	-3.6	111.4	-4.4	16.39	-9.1	16.04	7.0	102.2	-15.0
	Running 12 Month	38.6	41.1	33.6	0.5	114.7	40.4	58.47	2.5	56.00	1.3	104.4	1.2	22.56	44.6	18.84	1.8	119.8	42.1
Thursday	Current Month	34.6	3.1	30.9	10.1	112.1	-6.4	62.54	20.4	52.65	-2.6	118.8	23.6	21.65	24.0	16.25	7.2	133.2	15.7
	Year To Date	39.5	30.3	35.7	4.2	110.6	25.0	59.22	8.0	56.86	1.5	104.2	6.3	23.41	40.7	20.31	5.8	115.2	32.9
	Running 3 Month	31.3	5.7	31.5	11.7	99.1	-5.4	62.62	13.0	55.14	-1.9	113.6	15.2	19.58	19.4	17.39	9.5	112.6	9.0
	Running 12 Month	39.5	30.3	35.7	4.2	110.6	25.0	59.22	8.0	56.86	1.5	104.2	6.3	23.41	40.7	20.31	5.8	115.2	32.9
Friday	Current Month	40.0	-13.3	35.9	-1.7	111.3	-11.9	80.37	40.5	60.22	3.1	133.5	36.3	32.15	21.8	21.64	1.3	148.6	20.2
	Year To Date	54.6	14.5	43.0	1.1	127.0	13.3	68.23	21.4	63.48	4.8	107.5	15.8	37.28	39.1	27.30	6.0	136.5	31.2
	Running 3 Month	43.2	-12.5	39.3	3.1	110.0	-15.2	74.85	29.5	63.81	4.3	117.3	24.2	32.35	13.3	25.06	7.5	129.1	5.4
	Running 12 Month	54.6	14.5	43.0	1.1	127.0	13.3	68.23	21.4	63.48	4.8	107.5	15.8	37.28	39.1	27.30	6.0	136.5	31.2
Saturday	Current Month	45.5	-24.1	38.2	-9.4	119.1	-16.2	77.86	41.9	57.33	-1.4	135.8	43.9	35.44	7.7	21.91	-10.7	161.7	20.6
	Year To Date	60.9	14.2	47.0	1.9	129.7	12.1	68.88	23.0	64.13	6.5	107.4	15.5	41.95	40.4	30.12	8.5	139.3	29.4
	Running 3 Month	52.7	-8.4	43.1	-2.7	122.1	-5.9	74.30	30.7	64.23	6.1	115.7	23.2	39.13	19.7	27.70	3.3	141.3	15.9
	Running 12 Month	60.9	14.2	47.0	1.9	129.7	12.1	68.88	23.0	64.13	6.5	107.4	15.5	41.95	40.4	30.12	8.5	139.3	29.4
Weekday/Weekend	Current Month	29.5	-6.0	28.1	15.0	105.1	-18.3	60.65	19.3	50.78	-4.6	119.4	25.0	17.88	12.1	14.25	9.7	125.5	2.1
	Year To Date	37.2	34.9	32.5	0.0	114.2	34.9	58.87	8.0	55.91	1.2	105.3	6.8	21.88	45.7	18.19	1.1	120.3	44.1
	Running 3 Month	28.6	7.7	29.3	9.1	97.7	-1.3	60.13	7.6	53.03	-4.6	113.4	12.8	17.22	15.8	15.54	4.1	110.8	11.3
	Running 12 Month	37.2	34.9	32.5	0.0	114.2	34.9	58.87	8.0	55.91	1.2	105.3	6.8	21.88	45.7	18.19	1.1	120.3	44.1
Weekend (Fri-Sat)	Current Month	42.5	-20.0	36.9	-6.1	114.9	-14.7	79.17	41.7	58.89	1.1	134.4	40.2	33.61	13.4	21.76	-5.1	154.5	19.5
	Year To Date	57.7	14.3	45.0	1.5	128.4	12.6	68.57	22.3	63.81	5.7	107.5	15.7	39.59	39.7	28.70	7.2	138.0	30.3
	Running 3 Month	47.8	-10.6	41.1	-0.2	116.1	-10.5	74.56	30.2	64.02	5.2	116.5	23.7	35.62	16.3	26.33	5.1	135.3	10.7
	Running 12 Month	57.7	14.3	45.0	1.5	128.4	12.6	68.57	22.3	63.81	5.7	107.5	15.7	39.59	39.7	28.70	7.2	138.0	30.3
Total	Current Month	33.3	-10.1	30.6	8.1	108.7	-16.8	67.51	28.1	53.68	-2.3	125.8	31.1	22.45	15.2	16.43	5.6	136.7	9.1
	Year To Date	43.1	26.5	36.1	0.5	119.4	25.8	62.58	13.5	58.75	3.0	106.5	10.1	26.97	43.5	21.21	3.6	127.1	38.6
	Running 3 Month	34.3	0.2	32.8	5.9	104.5	-5.4	66.03	16.9	57.09	-0.7	115.7	17.7	22.62	17.1	18.71	5.1	120.9	11.4
	Running 12 Month	43.1	26.5	36.1	0.5	119.4	25.8	62.58	13.5	58.75	3.0	106.5	10.1	26.97	43.5	21.21	3.6	127.1	38.6

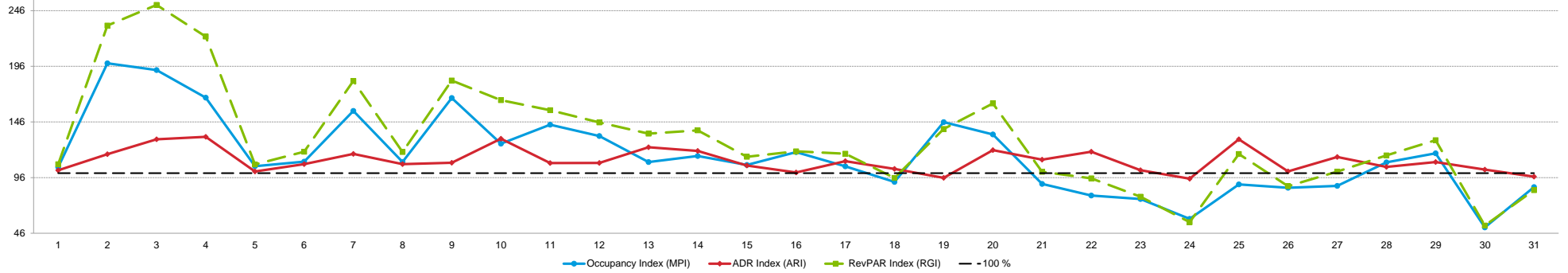
Tab 7 - Daily Data for the Month

Quality Inn & Suites Jackson 5723 I-55 Jackson, MS 39206 Phone: (601) 957-8557

STR # 35402 ChainID: MS375 MgtCo: MMI Hotel Group Owner: Desai Hotel Group

For the Month of: December 2021 Date Created: January 19, 2022 Daily Competitive Set Data Excludes Subject Property

Daily Indexes for the Month of December



	We	Th	Fr	Sa	Su	Mo	Tu	We	Th	Fr	Sa	Su	Mo	Tu	We	Th	Fr	Sa	Su	Mo	Tu	We	Th	Fr	Sa	Su	Mo	Tu	We	Th	Fr
Occupancy (%)	December																														
My Property	26.9	57.7	80.8	82.1	28.2	24.4	41.0	29.5	46.2	44.9	44.9	30.8	25.6	26.9	26.9	33.3	29.5	29.5	30.8	30.8	23.1	19.2	19.2	16.7	25.6	24.4	23.1	30.8	33.3	16.7	28.2
Competitive Set	25.6	29.0	41.9	48.9	26.6	22.1	26.3	26.8	27.5	35.5	31.3	23.1	23.3	23.3	25.1	28.0	27.8	32.0	21.1	22.8	25.6	24.1	25.1	28.3	28.5	28.0	26.1	28.0	28.3	32.5	32.3
Index (MPI)	105.3	198.7	192.6	167.9	106.2	110.3	156.0	110.0	167.6	126.5	143.5	133.3	109.9	115.4	107.4	118.9	106.1	92.1	145.9	134.8	90.3	79.9	76.7	58.9	89.9	86.9	88.6	109.7	117.8	51.3	87.4

	We	Th	Fr	Sa	Su	Mo	Tu	We	Th	Fr	Sa	Su	Mo	Tu	We	Th	Fr	Sa	Su	Mo	Tu	We	Th	Fr	Sa	Su	Mo	Tu	We	Th	Fr
% Chg	December																														
My Property	-34.4	95.7	5.0	0.0	15.8	5.6	128.6	109.1	140.0	20.7	29.6	60.0	5.3	-8.7	-25.0	-25.7	-20.7	-61.0	-11.1	-22.6	-40.0	-50.0	-28.6	-50.0	-45.9	-36.7	-25.0	-4.0	-13.3	-64.9	-38.9
Competitive Set	0.0	-9.3	-19.1	-16.9	18.9	-4.3	11.6	-4.4	1.8	7.5	-17.1	3.3	-10.5	0.0	21.7	11.9	-13.2	-15.1	-1.2	-5.2	22.6	31.1	14.8	-3.4	-17.3	32.9	22.1	21.5	20.0	-5.1	-5.1
Index (MPI)	-34.4	115.7	29.9	20.3	-2.6	10.3	104.9	118.8	135.7	12.2	56.4	54.8	17.6	-8.7	-38.4	-33.6	-8.7	-54.1	-10.1	-18.4	-51.1	-61.9	-37.8	-48.2	-34.7	-52.4	-38.6	-21.0	-27.8	-63.0	-35.6

	We	Th	Fr	Sa	Su	Mo	Tu	We	Th	Fr	Sa	Su	Mo	Tu	We	Th	Fr	Sa	Su	Mo	Tu	We	Th	Fr	Sa	Su	Mo	Tu	We	Th	Fr
ADR	December																														
My Property	56.42	69.35	97.03	91.22	56.08	49.85	63.29	61.09	62.64	76.27	70.75	60.89	66.50	57.75	59.50	54.78	69.49	66.19	52.74	63.38	58.78	68.43	57.11	61.42	60.95	56.44	62.19	61.59	63.53	60.55	61.78
Competitive Set	55.03	59.25	74.40	68.77	55.24	46.12	53.97	56.51	57.27	58.26	64.87	55.76	53.95	48.15	55.71	54.45	62.75	63.74	55.09	52.52	52.45	57.36	55.61	64.65	46.74	55.57	54.32	58.31	57.78	58.67	63.80
Index (ARI)	102.5	117.0	130.4	132.7	101.5	108.1	117.3	108.1	109.4	130.9	109.1	109.2	123.3	119.9	106.8	100.6	110.7	103.8	95.7	120.7	112.1	119.3	102.7	95.0	130.4	101.6	114.5	105.6	110.0	103.2	96.8

	We	Th	Fr	Sa	Su	Mo	Tu	We	Th	Fr	Sa	Su	Mo	Tu	We	Th	Fr	Sa	Su	Mo	Tu	We	Th	Fr	Sa	Su	Mo	Tu	We	Th	Fr
% Chg	December																														
My Property	2.1	36.0	73.6	59.0	-6.2	-2.4	23.2	7.8	18.6	28.2	23.8	-1.8	9.9	9.8	30.2	25.5	25.4	34.1	13.1	29.3	15.5	40.5	-0.6	3.0	5.6	38.7	40.6	36.5	29.3	6.3	15.4
Competitive Set	11.8	11.6	18.3	11.5	4.4	-13.5	-1.8	4.2	4.6	3.5	13.9	8.6	3.0	-12.0	4.6	8.2	12.5	12.2	4.4	-5.0	-3.9	11.0	-3.1	11.7	-17.8	5.8	-0.3	8.8	6.4	3.8	6.7
Index (ARI)	-8.7	21.9	46.8	42.6	-10.2	12.7	25.4	3.5	13.4	23.9	8.7	-9.5	6.7	24.7	24.6	15.9	11.4	19.6	8.4	36.1	20.2	26.6	2.6	-7.8	28.4	31.0	41.0	25.4	21.5	2.4	8.1

	We	Th	Fr	Sa	Su	Mo	Tu	We	Th	Fr	Sa	Su	Mo	Tu	We	Th	Fr	Sa	Su	Mo	Tu	We	Th	Fr	Sa	Su	Mo	Tu	We	Th	Fr
RevPAR	December																														
My Property	15.19	40.01	78.37	74.85	15.82	12.14	25.96	18.01	28.91	34.22	31.75	18.73	17.05	15.55	16.02	18.26	20.49	19.52	16.23	19.50	13.57	13.16	10.98	10.24	15.63	13.75	14.35	18.95	21.18	10.09	17.42
Competitive Set	14.07	17.20	31.20	33.62	14.67	10.18	14.20	15.14	15.78	20.67	20.28	12.87	12.58	11.23	13.96	15.27	17.44	20.40	11.62	11.99	13.41	13.81	13.94	18.29	13.34	15.58	14.15	16.35	16.34	19.07	20.58
Index (RGI)	108.0	232.6	251.2	222.7	107.9	119.2	182.9	119.0	183.3	165.6	156.5	145.6	135.5	138.4	114.7	119.6	117.5	95.7	139.7	162.6	101.2	95.3	78.8	56.0	117.2	88.2	101.4	115.9	129.6	52.9	84.7

	We	Th	Fr	Sa	Su	Mo	Tu	We	Th	Fr	Sa	Su	Mo	Tu	We	Th	Fr	Sa	Su	Mo	Tu	We	Th	Fr	Sa	Su	Mo	Tu	We	Th	Fr
% Chg	December																														
My Property	-33.0	166.1	82.3	59.0	8.6	3.0	181.6	125.5	184.6	54.7	60.5	57.2	15.6	0.2	-2.3	-6.8	-0.6	-47.7	0.6	0.1	-30.7	-29.8	-29.0	-48.5	-42.9	-12.2	5.5	31.0	12.1	-62.7	-29.5
Competitive Set	11.8	1.2	-4.3	-7.3	24.1	-17.2	9.6	-0.4	6.5	11.2	-5.6	12.2	-7.8	-12.0	27.2	21.1	-2.3	-4.8	3.2	-9.9	17.8	45.5	11.2	7.9	-32.0	40.7	21.7	32.2	27.7	-1.5	1.3
Index (RGI)	-40.1	162.9	90.6	71.5	-12.5	24.3	156.9	126.4	167.3	39.1	70.0	40.1	25.4	13.9	-23.2	-23.0	1.7	-45.1	-2.5	11.1	-41.2	-51.7	-36.2	-52.3	-16.1	-37.6	-13.4	-0.9	-12.2	-62.1	-30.4

2022 © CoStar Group. This STR Report is a publication of STR, LLC and STR Global, Ltd. CoStar Group companies, and is intended solely for use by paid subscribers. The information in the STR Report is provided on an "as is" and "as available" basis and should not be construed as investment, tax, accounting or legal advice. Reproduction or distribution of this STR Report, in whole or part, without written permission is prohibited and subject to legal action. If you have received this report and are NOT a subscriber to this STR Report, please contact us immediately. Source: 2022 STR, LLC / STR Global, Ltd. trading as "STR".



How can we assist you?

Glossary:

For all STR definitions, please click here or visit www.str.com/data-insights/resources/glossary

Frequently Asked Questions (FAQ):

For all STR FAQs, please click here or visit www.str.com/data-insights/resources/FAQ

For additional support, please [contact](#) your regional office.

For the latest in industry news, visit HotelNewsNow.com.

To learn more about the Hotel Data Conference, visit HotelDataConference.com.