

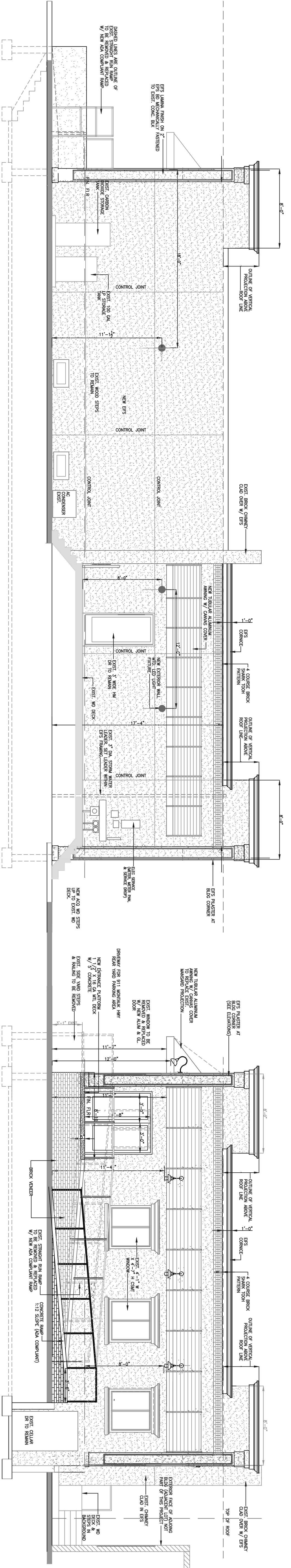
Frank A. Lombardo Architect  
R.A. NY 15424

| SUBMISSION LOG |         |
|----------------|---------|
| NO.            | DATE    |
| 1              | 1/17/24 |

| CLIENT COMMENTS |  |
|-----------------|--|
|                 |  |
|                 |  |
|                 |  |
|                 |  |

| AGENCY FILE NO. |  |
|-----------------|--|
|                 |  |
|                 |  |
|                 |  |

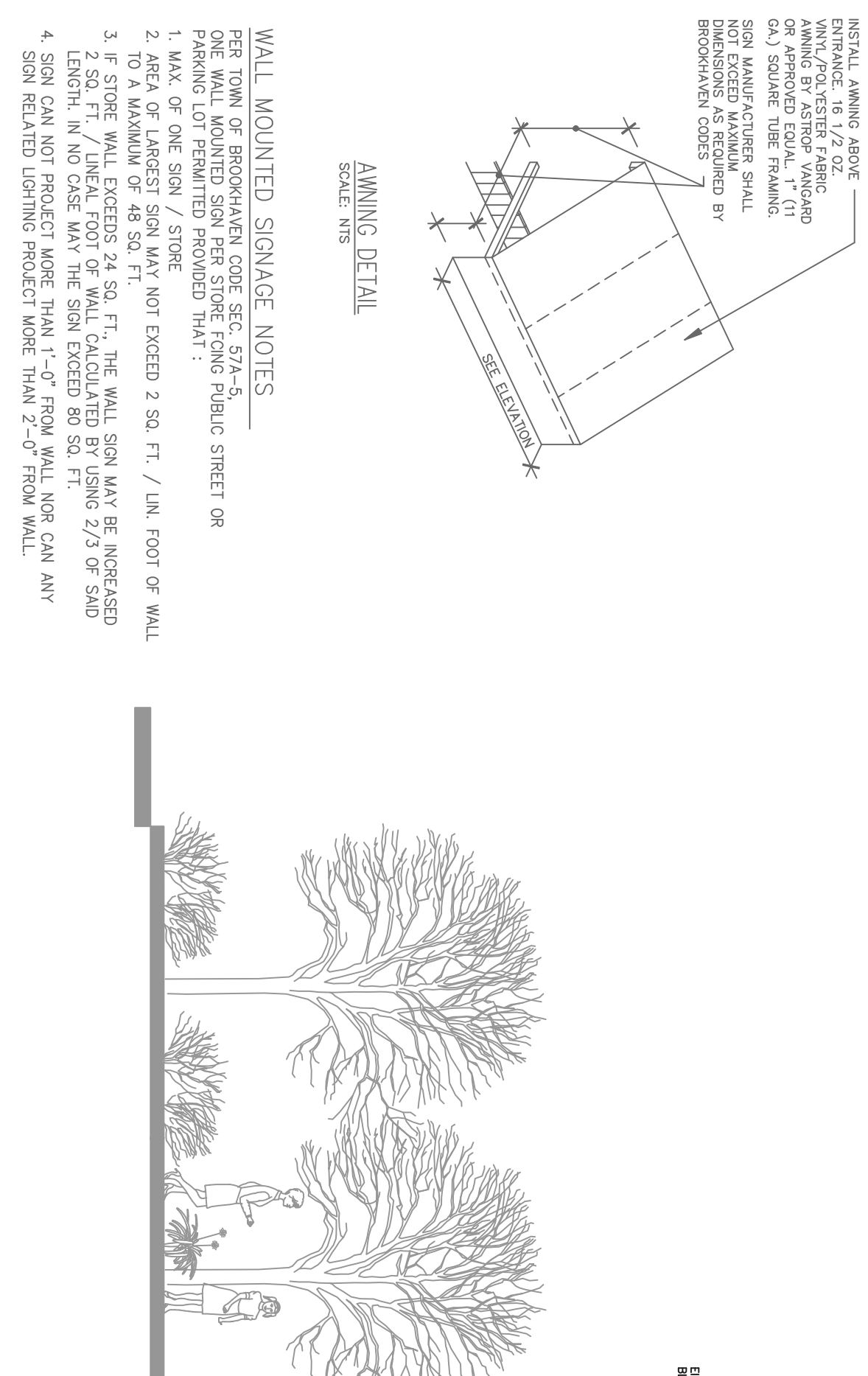
| BLDG. DEPT. |  |
|-------------|--|
|             |  |
|             |  |



SIDE (WEST) ELEVATION  
SCALE 1/4" = 1'-0"

REAR (NORTH) ELEVATION  
SCALE 1/4" = 1'-0"

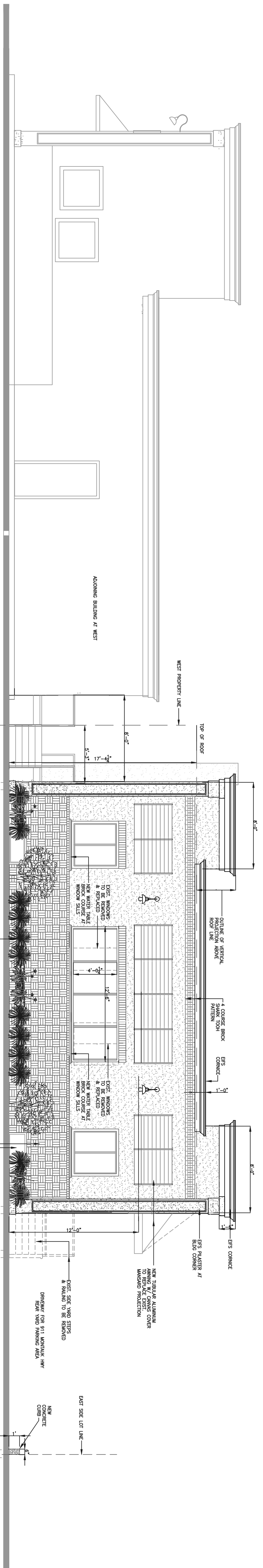
SIDE (EAST) ELEVATION AT PARKING LOT  
SCALE 1/4" = 1'-0"



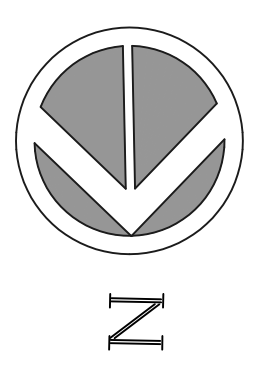
AWNING DETAIL  
SCALE 1/4" = 1'-0"

WALL MOUNTED SIGNAGE NOTES

- FOR WALL MOUNTED SIGNAGE, SEE SECTION PUBLIC STREET OR PARKING LOT PERMITTED PROVIDED THAT:
- 1. MAX. OF ONE SIGN / STORE
- 2. AREA OF LARGEST SIGN MAY NOT EXCEED 2 SQ. FT. / LIN. FOOT OF WALL
- 3. IF STORE WALL EXCEEDS 24 SQ. FT., THE WALL SIGN MAY BE INCREASED TO 2 SQ. FT. / LIN. FOOT OF WALL CALCULATED BY USING 2/3 OF SIGN LENGTH, IN NO CASE MAY THE SIGN EXCEED 80 SQ. FT.
- 4. SIGN CAN NOT PROJECT MORE THAN 1'-0" FROM WALL NOR CAN ANY SIGN EXCEED 18" FROM STREET MORE THAN 2'-0" FROM WALL.



FRONT (SOUTH) ELEVATION AT MONTAUK HIGHWAY  
SCALE 1/4" = 1'-0"



# FACADE RESTORATION 911 MONTAUK HIGHWAY MASTIC-SHIRLEY, N.Y.

FRANK A. LOMBARDO  
ARCHITECT  
WESTHAUGTON, N.Y. 11792  
E Mail: 631-357-1438  
FAX: 631-357-1439  
WWW.FRANKALOMBARDOARCH.COM

DRAWING TITLE :  
EXTERIOR ELEVATIONS

DATE: 1/25/24  
PROJECT NO.:  
DWG. BY: FAL  
CHK. BY: FAL  
DWG. NO. A-104

FRANK A. LOMBARDO ARCHITECT  
11792 WESTHAUGTON ROAD  
WESTHAUGTON, N.Y. 11792  
631-357-1438  
WWW.FRANKALOMBARDOARCH.COM