



MRG

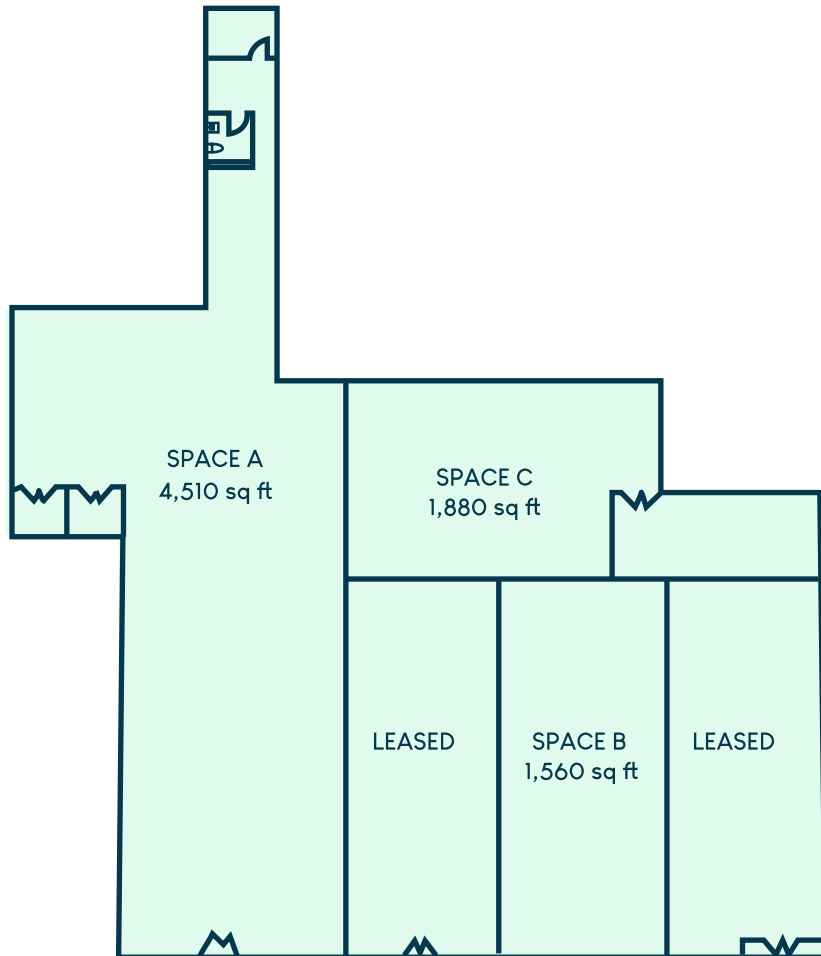
For Lease

2700 Church Ave

Newly Developed Retail Space Available For Lease

1,560 - 7,950 sq ft | 2700 Church Ave | Brooklyn, NY 11226

PROPERTY DETAILS



OVERVIEW

- **Address:** 2700 Church Ave, Brooklyn, NY 11226
- **Cross Streets:** Rogers Ave and Llyod Pl
- **Neighborhood:** Flatbush

SPACE DETAILS

- **Size:** 1,560 - 7,950 sq ft
- **Ceiling Height:** 12 ft
- **Frontage:** 100 ft
- **Zoning:** R6, C2-3, C1-3

HIGHLIGHTS

- Brand New Development
- Division options
- Glass storefronts
- HVAC
- High foot traffic location
- ADA Accessible

TRANSPORTATION

- 3 min back to B35 / 4 min walk to B44
- Church Ave 5 & 2 trains
- 33min drive to JFK and LGA / 40min drive to EWR

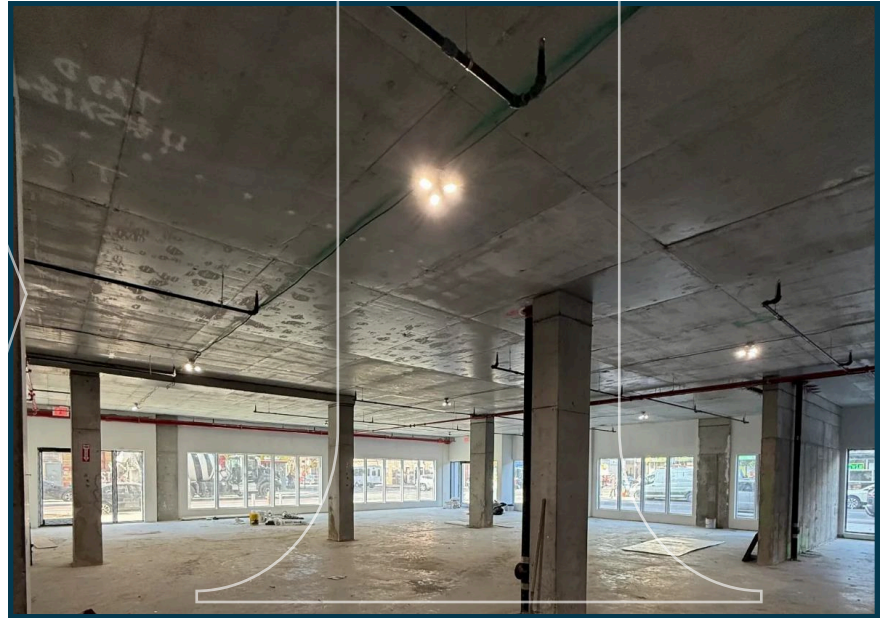
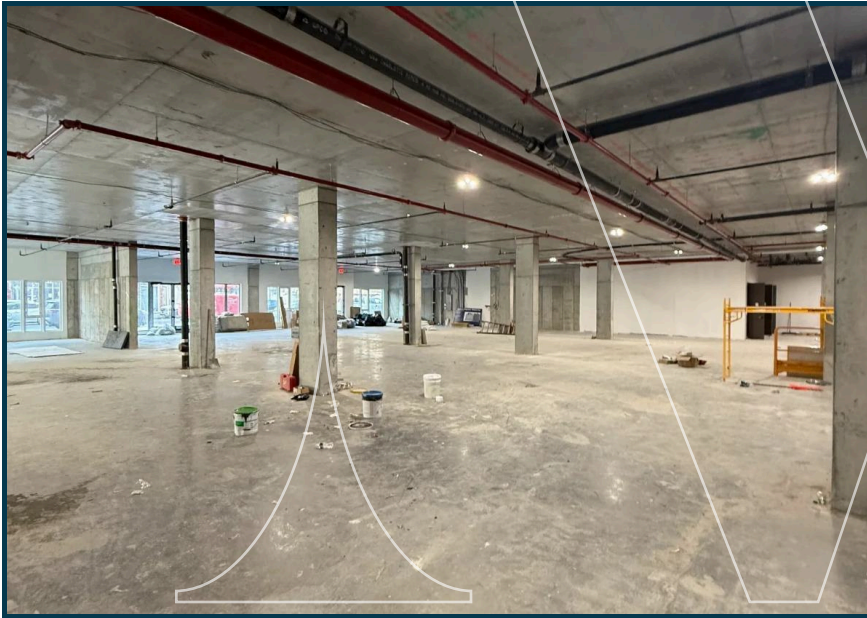
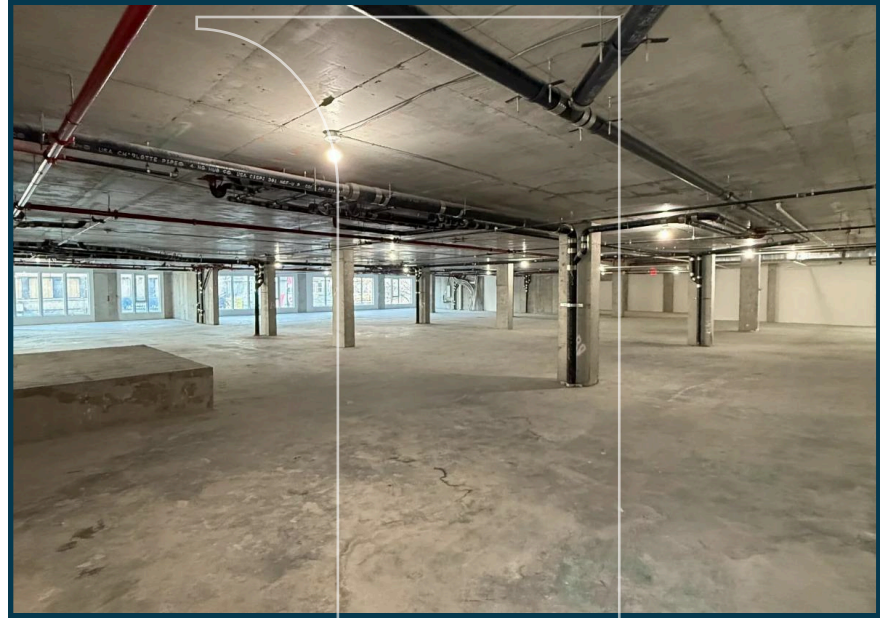
DEMOGRAPHICS

- **Population:** 175,989
- **Median Household Income:** \$99,395
- **Median Home Value:** \$1,001,251

NEIGHBORS

Chase Bank, Retro Fitness, Dollar Tree, IHOP, Planet Fitness, Drip Beverage Lounge, Bebe Fritay, Tulun's Caribbean Cuisine, Rogers Burgers, La Baguette Shop, Cake Ambience, Shell, McDonald's, Five Below, T-Mobile

INTERIOR PHOTOS



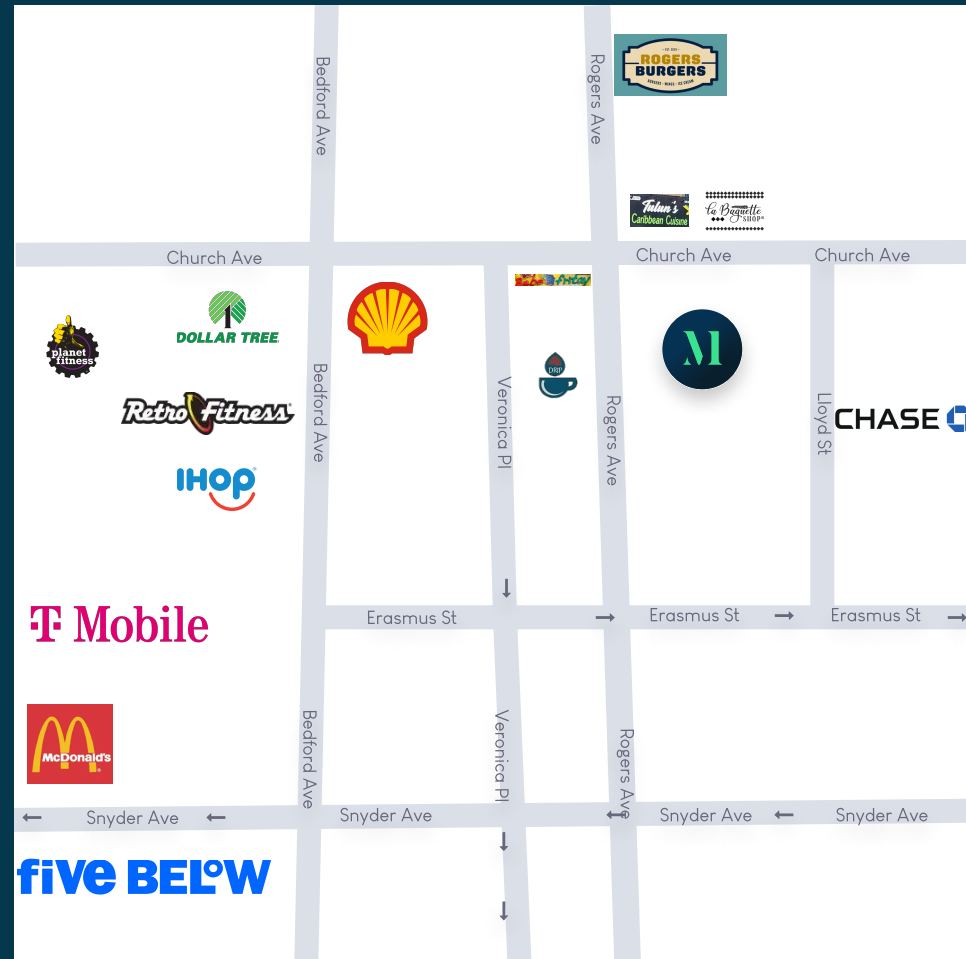
Newly Developed Retail Space Available For Lease

MRG

2700 Church Ave Brooklyn, NY 11226

FOR MORE INFORMATION
PLEASE CONTACT:

MOSHE AKIVA
212-314-4684 Ext.103
Moshe@mrgny.com



Newly Developed Retail Space Available For Lease