

# PROMINENT LAND SITE AVAILABLE FOR SALE

DEVELOPMENT  
OPPORTUNITY



## 1919 BURLINGTON-MOUNT HOLLY ROAD WESTAMPTON, NJ

**Evan Zweben**  
Executive Vice President  
856.261.5548  
evan.zweben@wolfcre.com



The foregoing information was furnished to us by sources which we deem to be reliable, but no warranty or representation is made as to the accuracy thereof.  
Subject to correction of errors, omissions, change of price, prior sale or withdrawal from market without notice.



**Wolf Commercial Real Estate**  
**www.WolfCRE.com**



## PROPERTY DESCRIPTION

**Location:** 1919 Burlington-Mount Holly Road  
Westampton, NJ 08060

**Size/SF:** +/- 110.34 acres

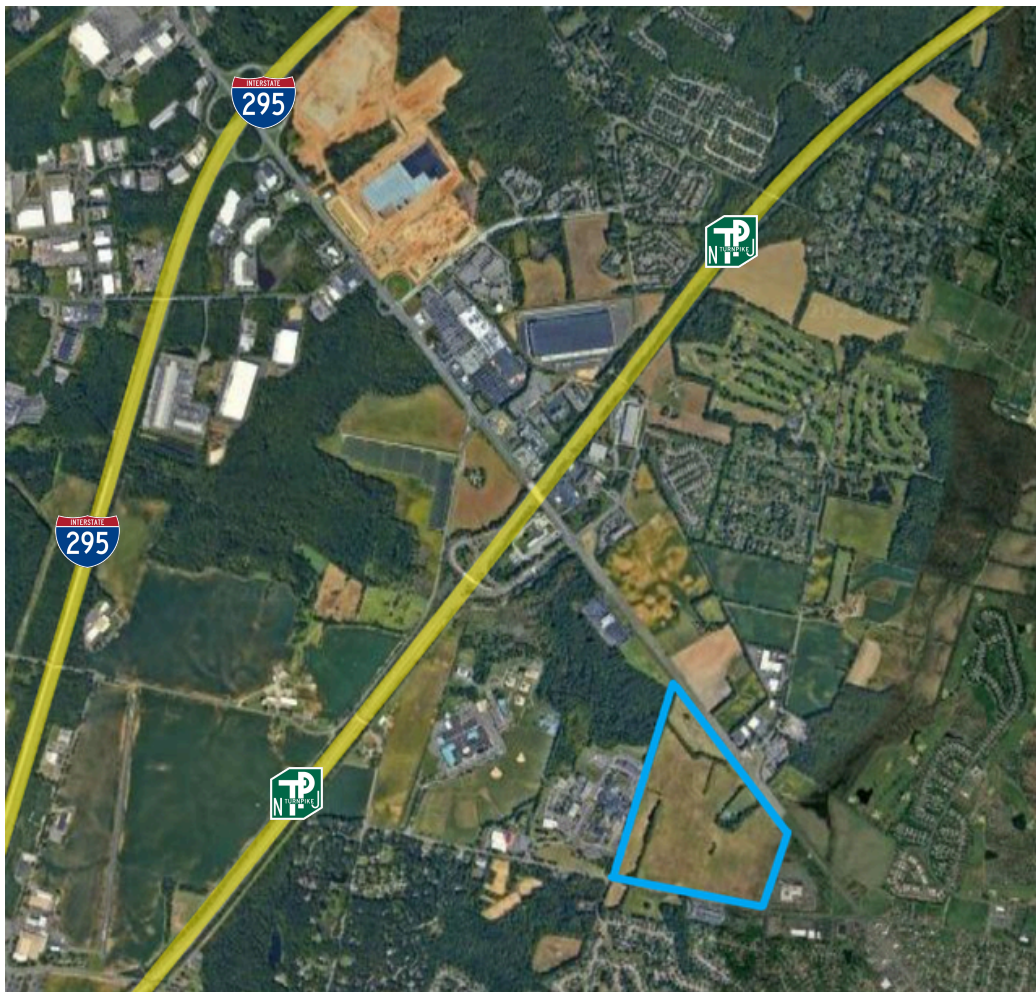
**Sale Price:** Call for information

**Zoning:** OR-1 and Commercial

## PROPERTY AREA/HIGHLIGHTS

- Zoned Office Research 1 (OR-1) & Commercial (C)
  - Offices for business, executive, professional and administrative
  - Laboratories dedicated to research, design & experiment
  - Banks and financial institutions
  - Conference centers
  - Child-care centers
  - Retail and restaurants
- Situated on heavily traveled Route 541 (Burlington-Mt. Holly Road)
- Less than 1 mile to NJ Turnpike & 2 miles to I-295
- 3 Miles to Virtua Hospital of Mount Holly
- Surrounded by residential, restaurants and retailers

## AERIAL MAP



The foregoing information was furnished to us by sources which we deem to be reliable, but no warranty or representation is made as to the accuracy thereof. Subject to correction of errors, omissions, change of price, prior sale or withdrawal from market without notice.