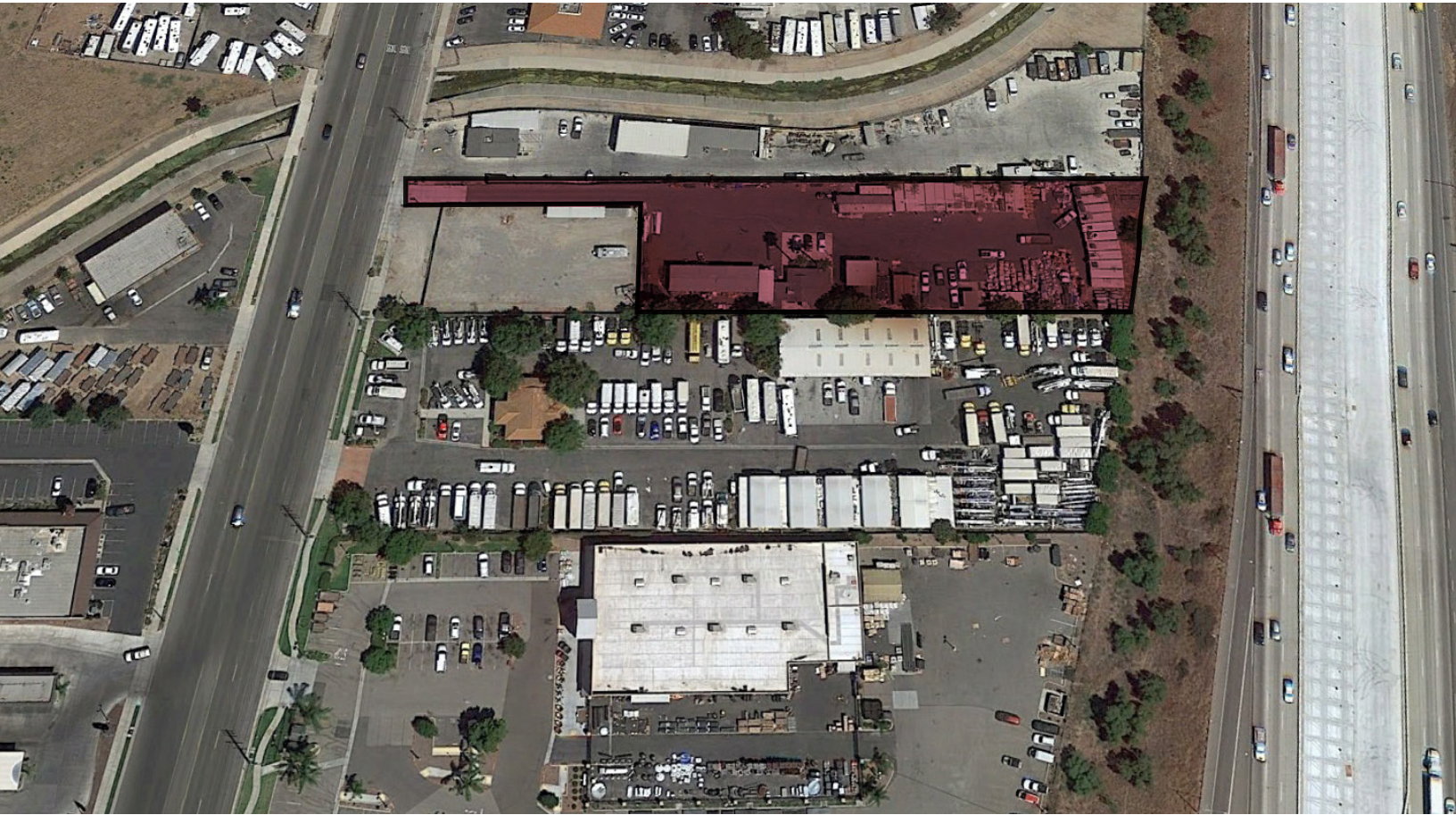


# FOR LEASE

# ±1.29 ACRE CONSTRUCTION YARD

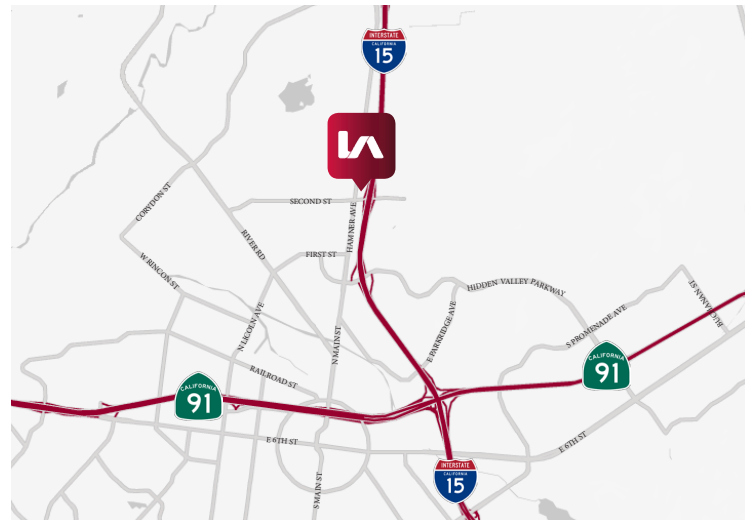
2259 HAMNER AVENUE, NORCO, CA 92860



## PROPERTY FEATURES

- ±1,000 SF Office/House & ±400 SF Office Trailer
- Great Construction Yard
- Fully Fenced & Secured
- Separate Offices & Pole Sheds
- Norco Auto Mall Specific Plan Zoning
- Currently Approved for a Contractors Yard
- Close Proximity to I-15 & 91 FWY

## LOCATION MAP



For More Information, please contact:

**John Mulrooney**  
Senior Vice President/Principal

(909)373-2928 | [jmulrooney@lee-assoc.com](mailto:jmulrooney@lee-assoc.com)  
DRE #00839176

 **LEE &  
ASSOCIATES**  
COMMERCIAL REAL ESTATE SERVICES  
ONTARIO

All information furnished regarding property for sale, rental or financing is from sources deemed reliable, but no warranty or representation is made to the accuracy thereof and same is submitted to errors, omissions, change of price, rental or other conditions prior to sale, lease or financing or withdrawal without notice. No liability of any kind is to be imposed on the broker herein.