

LAKE HOPATCONG, NJ

694 & 706 NEW JERSEY 15, LAKE HOPATCONG, NJ 07849



OFFERING SUMMARY

Available SF: 1,000 - 2,500 SF

Lease Rate: Call For Details

NEIGHBORING TENANTS



PROPERTY OVERVIEW

Retail and Office Spaces For Lease

PROPERTY HIGHLIGHTS

- 5 Retail Units Available Immediately:
- -2,500 SF (End Cap w/ Drive Thru)
- -1,437 SF
- -2,264 SF
- -1,000 SF
- -1,224 SF (End Cap)
- Abundant Parking
- Excellent Exposure on Route 15
- Convenient Access to Route 80

FOR MORE INFORMATION CONTACT:

ROY PARET

201.703.9700 x132

rparet@thegoldsteingroup.com

Licensed Real Estate Broker | 45 EISENHOWER DRIVE | SUITE 246 | PARAMUS, NJ 07652

All information is from sources deemed reliable and is submitted subject to errors, omissions, change of price, terms, rental, prior sale and withdrawal without notice.



THEGOLDSTEINGROUP.COM

LAKE HOPATCONG, NJ

694 & 706 NEW JERSEY 15, LAKE HOPATCONG, NJ 07849



FOR MORE INFORMATION CONTACT:

ROY PARET

201.703.9700 x132

rparet@thegoldsteingroup.com

Licensed Real Estate Broker | 45 EISENHOWER DRIVE | SUITE 246 | PARAMUS, NJ 07652

All information is from sources deemed reliable and is submitted subject to errors, omissions, change of price, terms, rental, prior sale and withdrawal without notice.



THEGOLDSTEINGROUP.COM

LAKE HOPATCONG, NJ

694 & 706 NEW JERSEY 15, LAKE HOPATCONG, NJ 07849



FOR MORE INFORMATION CONTACT:

ROY PARET
201.703.9700 x132
rparet@thegoldsteingroup.com

Licensed Real Estate Broker | 45 EISENHOWER DRIVE | SUITE 246 | PARAMUS, NJ 07652

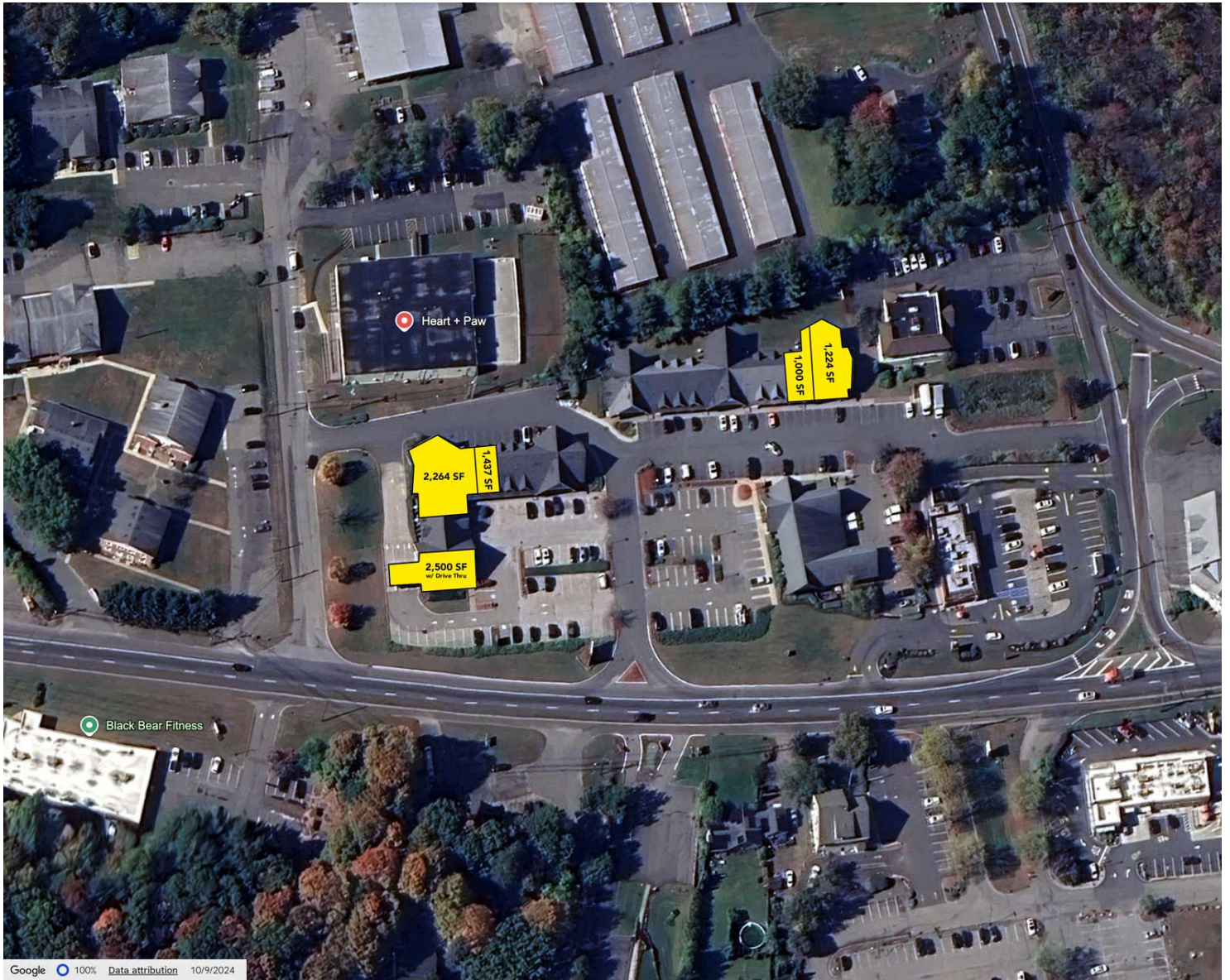
All information is from sources deemed reliable and is submitted subject to errors, omissions, change of price, terms, rental, prior sale and withdrawal without notice.



THEGOLDSTEINGROUP.COM

LAKE HOPATCONG, NJ

694 & 706 NEW JERSEY 15, LAKE HOPATCONG, NJ 07849



FOR MORE INFORMATION CONTACT:

ROY PARET

201.703.9700 x132

rparet@thegoldsteingroup.com

Licensed Real Estate Broker | 45 EISENHOWER DRIVE | SUITE 246 | PARAMUS, NJ 07652

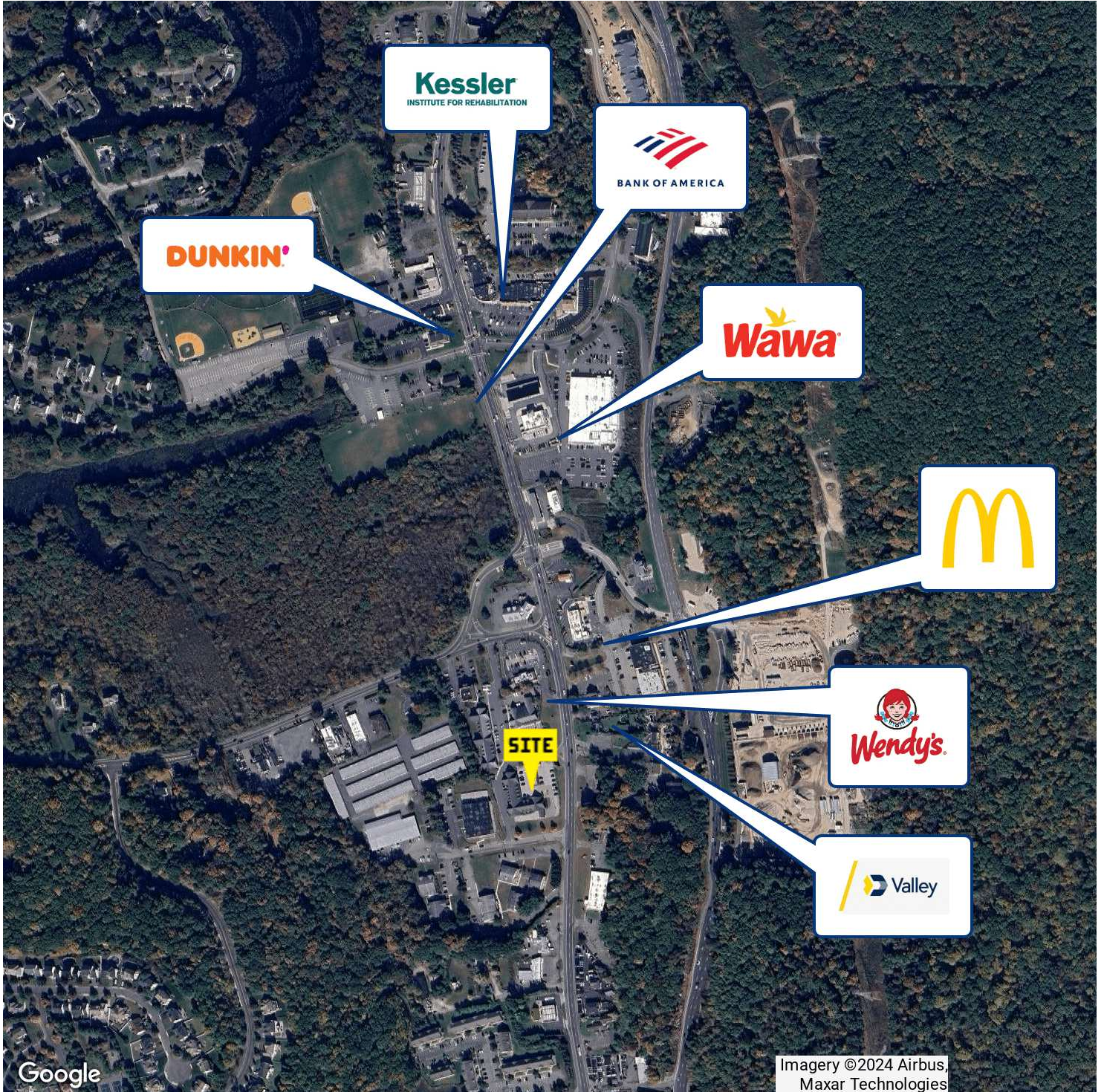
All information is from sources deemed reliable and is submitted subject to errors, omissions, change of price, terms, rental, prior sale and withdrawal without notice.



THEGOLDSTEINGROUP.COM

LAKE HOPATCONG, NJ

694 & 706 NEW JERSEY 15, LAKE HOPATCONG, NJ 07849



FOR MORE INFORMATION CONTACT:

ROY PARET
201.703.9700 x132
rparet@thegoldsteingroup.com

Licensed Real Estate Broker | 45 EISENHOWER DRIVE | SUITE 246 | PARAMUS, NJ 07652

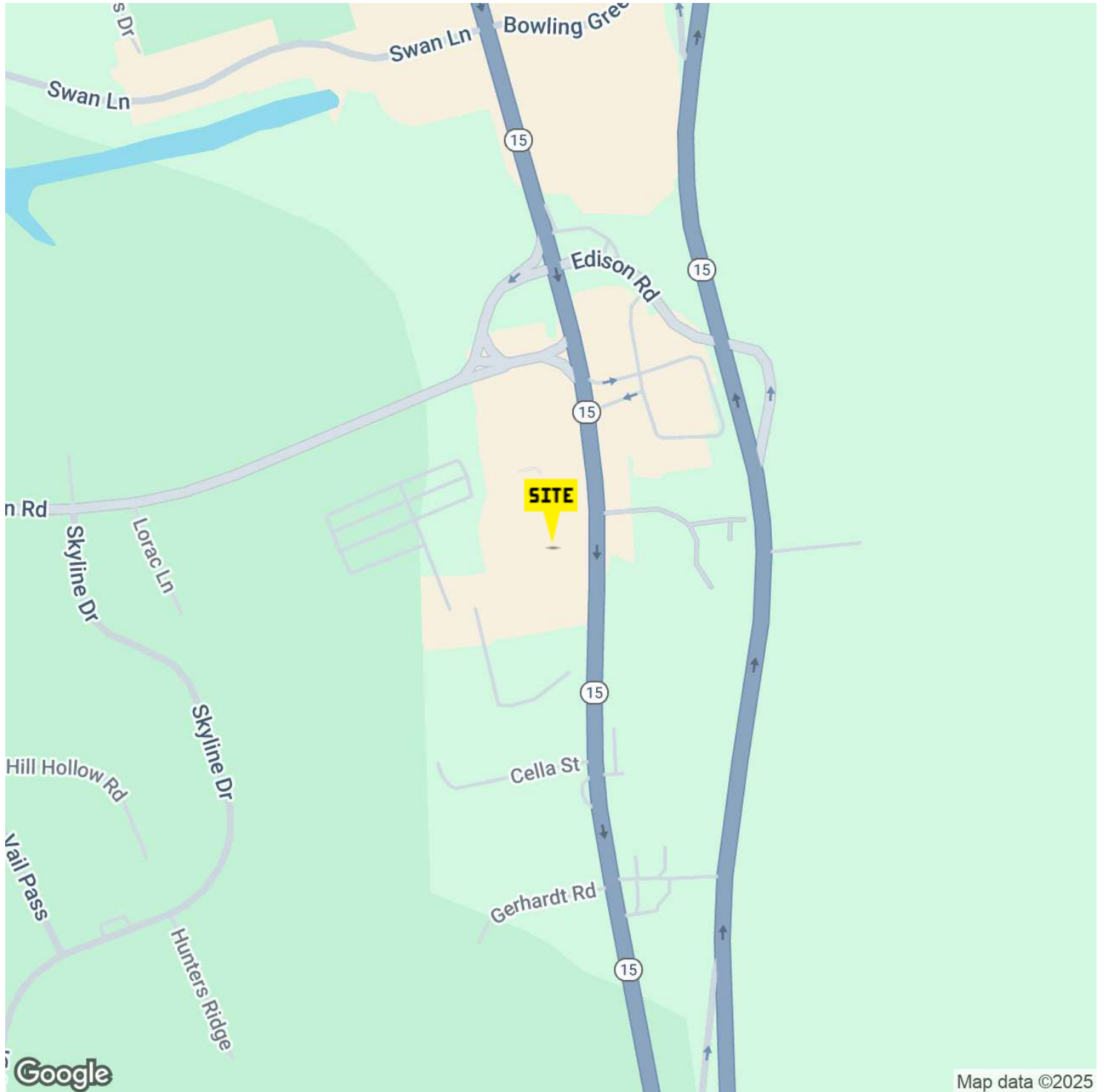
All information is from sources deemed reliable and is submitted subject to errors, omissions, change of price, terms, rental, prior sale and withdrawal without notice.



THEGOLDSTEINGROUP.COM

LAKE HOPATCONG, NJ

694 & 706 NEW JERSEY 15, LAKE HOPATCONG, NJ 07849



FOR MORE INFORMATION CONTACT:

ROY PARET

201.703.9700 x132

rparet@thegoldsteingroup.com

Licensed Real Estate Broker | 45 EISENHOWER DRIVE | SUITE 246 | PARAMUS, NJ 07652

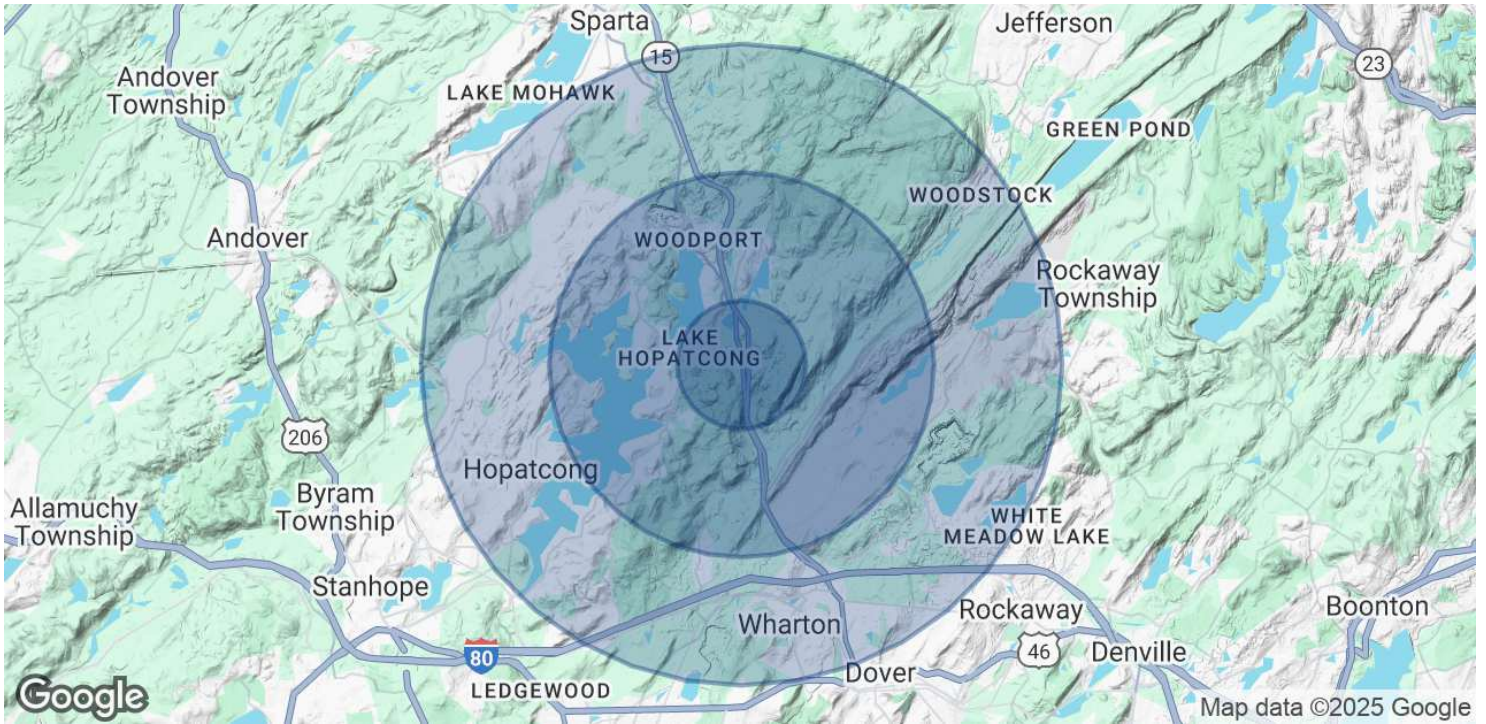
All information is from sources deemed reliable and is submitted subject to errors, omissions, change of price, terms, rental, prior sale and withdrawal without notice.



THEGOLDSTEINGROUP.COM

LAKE HOPATCONG, NJ

694 & 706 NEW JERSEY 15, LAKE HOPATCONG, NJ 07849



| POPULATION | 1 MILE | 3 MILES | 5 MILES |
|----------------------|--------|---------|---------|
| Total Population | 2,642 | 15,128 | 62,970 |
| Average Age | 43 | 44 | 44 |
| Average Age (Male) | 42 | 43 | 43 |
| Average Age (Female) | 43 | 44 | 45 |

| HOUSEHOLDS & INCOME | 1 MILE | 3 MILES | 5 MILES |
|---------------------|-----------|-----------|-----------|
| Total Households | 945 | 6,011 | 24,719 |
| # of Persons per HH | 2.8 | 2.5 | 2.5 |
| Average HH Income | \$162,764 | \$144,550 | \$149,438 |
| Average House Value | \$661,026 | \$560,223 | \$467,764 |

Demographics data derived from AlphaMap

FOR MORE INFORMATION CONTACT:

ROY PARET
201.703.9700 x132
rparet@thegoldsteingroup.com

