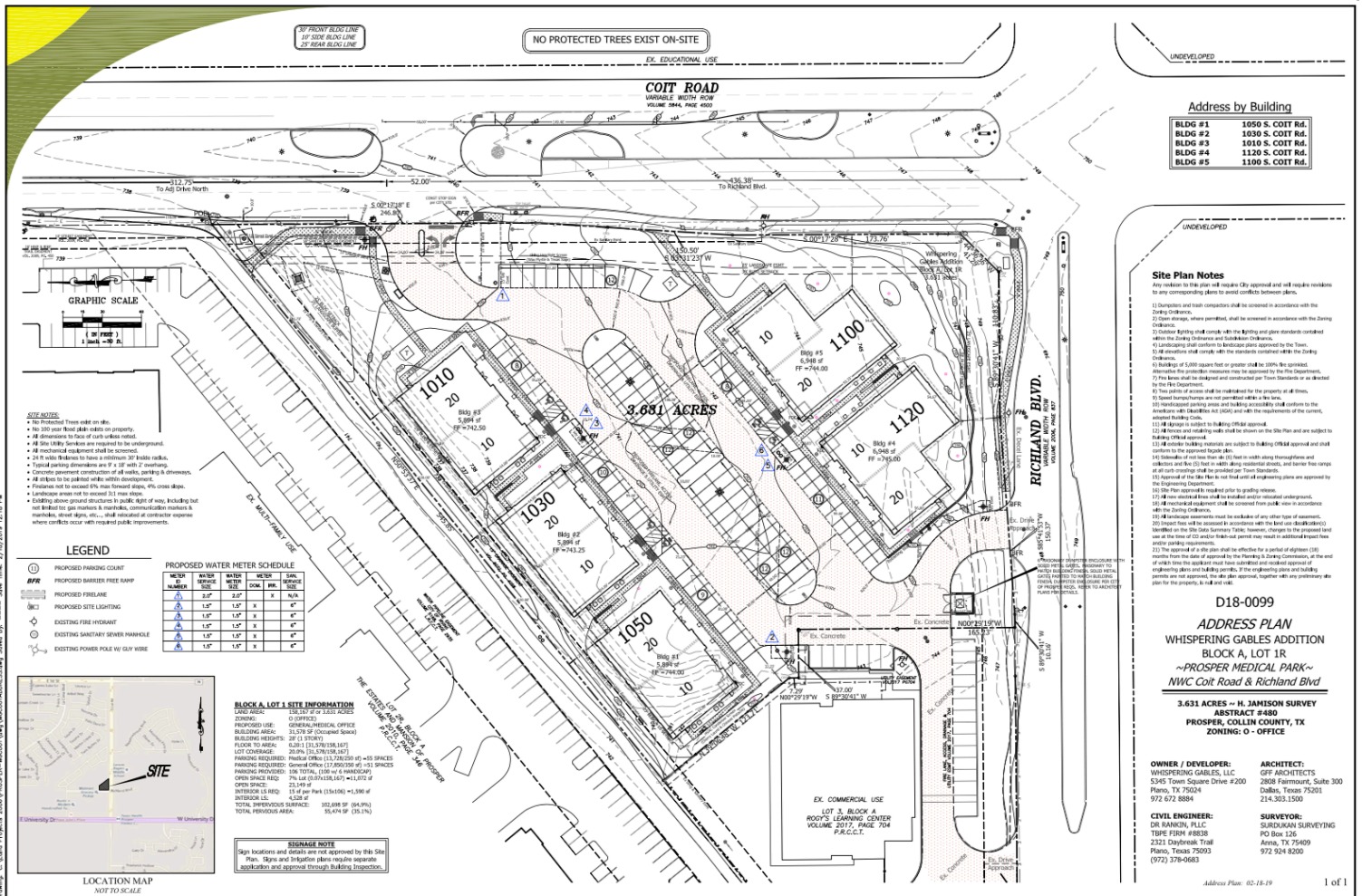


Location:
 Whispering Gables Office
 Park
 1010, 1030, 1050, 1100, &
 1120 S. Coit Road
 Prosper, TX 75078



Space Available:
 Shell Space & Fully Finished Out
 Professional & Medical Offices
 Available
 1,400 SF – 6,948 SF
 \$28 - \$34 + NNN for Lease
 \$320 / SF for Sale

Site Plan



The information contained herein was obtained from sources deemed reliable; however Legacy Commercial LLC. makes no guarantees, warranties or representations as to the completeness or accuracy thereof, the presentation of this real estate information is subject to errors: omissions; change of price; subject to prior sale or lease; or withdrawal without notice.

FOR MORE INFORMATION CONTACT
 O: 972.292.1220

Joe Martinez C: 214.535.1876 / Tonya La Barbera C: 469.323.2615
 Martinez@LCRTexas.com / Tonya@LCRTexas.com