

Colliers

W 900 S

Land For Sale

Union Pacific Railroad

578'

782'

1,174'

1,450'

9900 West

Weber County Land

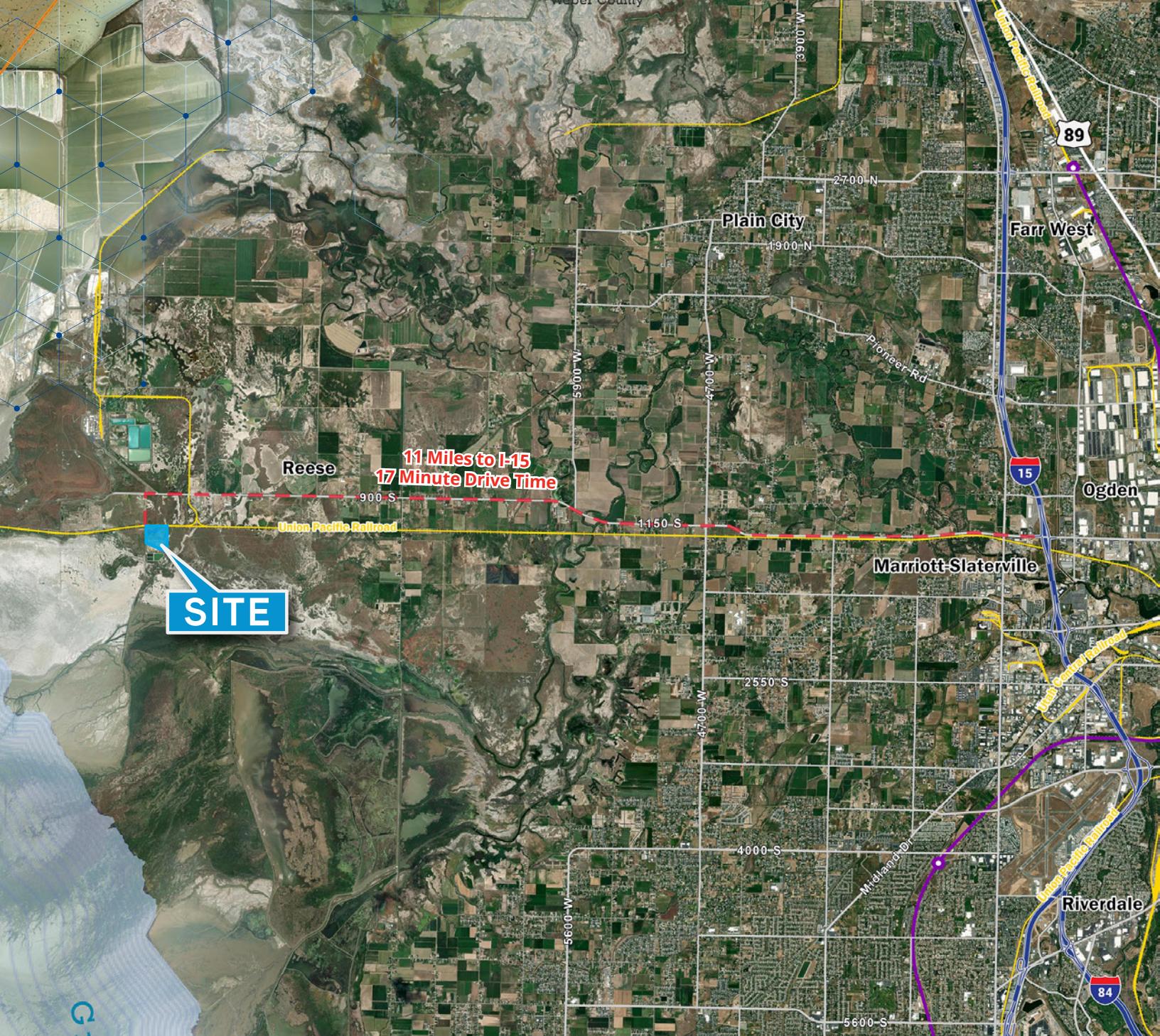
Approximately 9900 West 1200 South

Weber County, Utah

Land Information:

- 41.70 Acres of M-2 Land For Sale
- Parcel Numbers: 100-410-012 & 100-410-013
- Future Access to Rail
- Located in Weber County
- Call For Pricing

Accelerating success.



Colliers
111 S. Main St., Suite 2200
Salt Lake City, UT 84111
Main: +1 801 947 8300
colliers.com

Tom Freeman, SIOR
Vice Chair
+1 801 947 8309
tom.freeman@colliers.com

Jeremy Jensen, SIOR, CCIM
Executive Vice President
+1 801 441 1207
jeremy.jensen@colliers.com

Travis Healey, SIOR
Vice Chair
+1 801 947 8335
travis.healey@colliers.com

Jeremy Terry
Vice President
+1 801 671 9349
jeremy.terry@colliers.com

This document has been prepared by Colliers International for advertising and general information only. Colliers International makes no guarantees, representations or warranties of any kind, expressed or implied, regarding the information including, but not limited to, warranties of content, accuracy and reliability. Any interested party should undertake their own inquiries as to the accuracy of the information. Colliers International excludes unequivocally all inferred or implied terms, conditions and warranties arising out of this document and excludes all liability for loss and damages arising there from. This publication is the copyrighted property of Colliers International and/or its licensor(s). ©2024. All rights reserved.