

Harris County Appraisal District



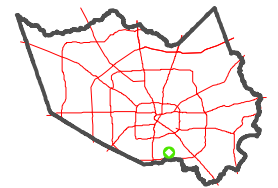
0 50 100 200 Feet

PUBLICATION DATE:
1/6/2021

Geospatial or map data maintained by the Harris County Appraisal District is for informational purposes and may not have been prepared for or be suitable for legal, engineering, or surveying purposes. It does not represent an on-the-ground survey and only represents the approximate location of property boundaries.



MAP LOCATION



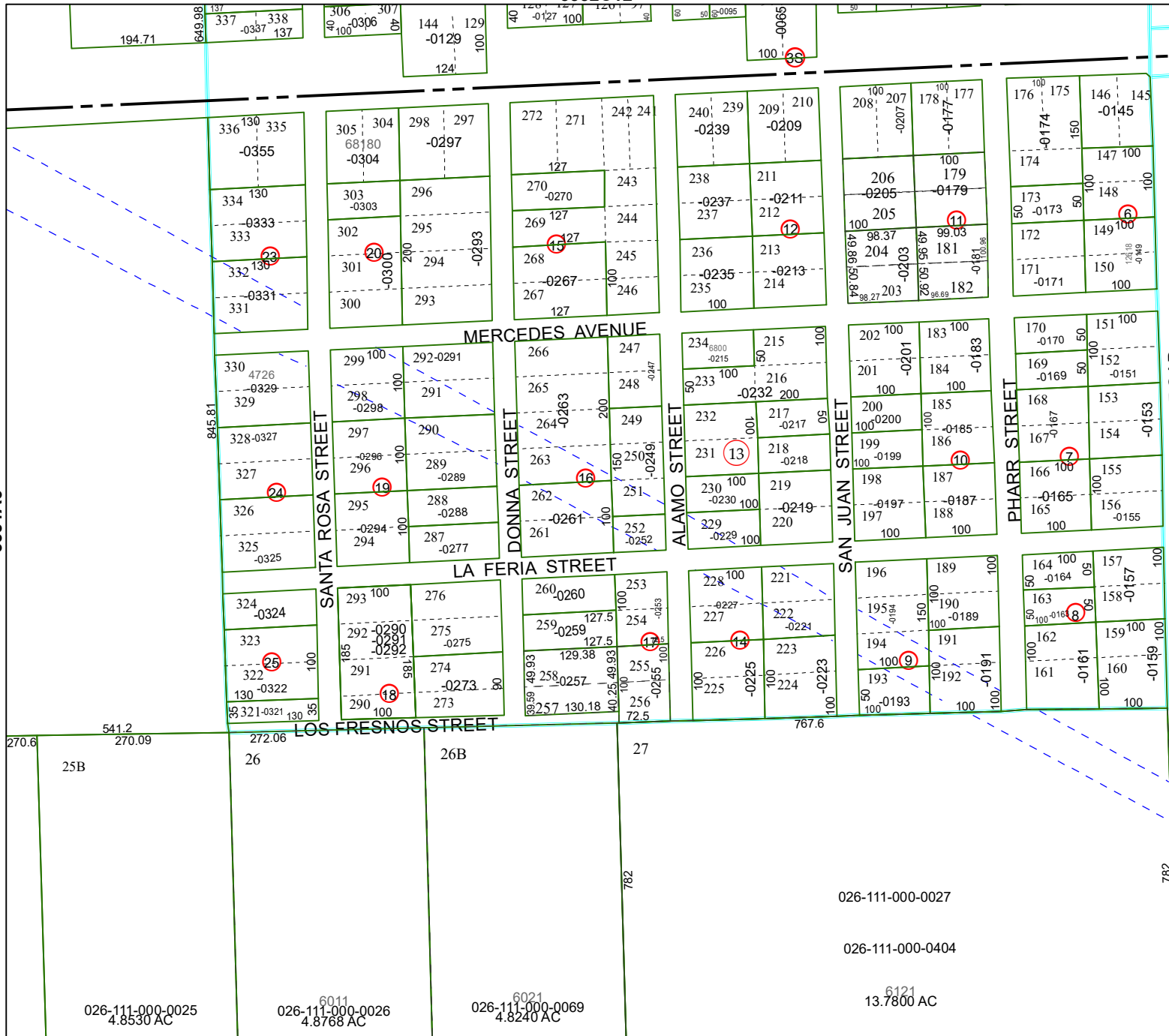
FACET 5551A4

10	11	12	9	10
2	3	4	1	2
6	7	8	5	6

5552C12

5551A3

5551B1



026-111-000-0027

026-111-000-0404

6121
13.7800 AC

026-111-000-0025
4.8530 AC

6011
026-111-000-0026
4.8768 AC

6021
026-111-000-0069
4.8240 AC

5551A8