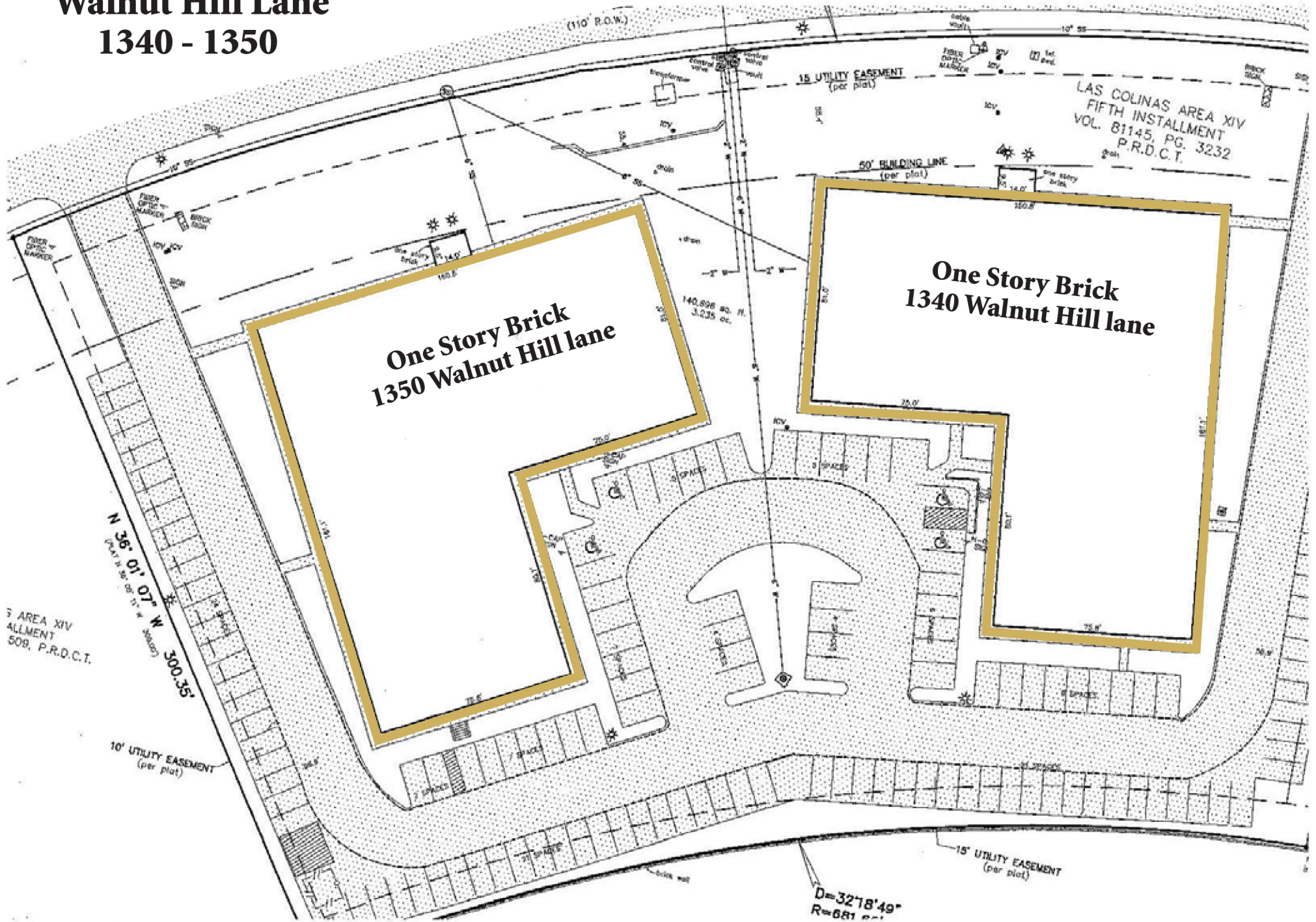


Walnut Hill Lane 1340 - 1350



**One Story Brick
1350 Walnut Hill lane**

**One Story Brick
1340 Walnut Hill lane**

LAS COLINAS AREA XIV
FIFTH INSTALLMENT
VOL. 81145, PG. 3232
P.R.D.C.T.

N 36° 01' 07" W 300.35'
PLAT 11, 26, 207, 11, W 300.35'

10' UTILITY EASEMENT
(per plat)

D=3278'49"
R=681'

15' UTILITY EASEMENT
(per plat)