

FOR SALE

21141 GOVERNORS HWY

21141 Governors Hwy Matteson, IL 60443



PROPERTY DESCRIPTION

Prime Investment, Development, or Owner/User Opportunity in Matteson, IL. Available for sale is a multi-tenant office building with a parking lot situated on 2.62± acres of land. Property is priced to sell!! Building has seen recent HVAC improvements and is being sold in as-is condition.

PROPERTY HIGHLIGHTS

- Three Level Office Building w/ Elevator
- Abundant Parking
- Future Development Potential
- Close proximity to I-57 and the 211th Street Metra Station

OFFERING SUMMARY

Sale Price:	\$469,000
Lot Size:	2.62 Acres
Building Size:	22,523 SF
Taxes (2023):	\$89,411.80
Governors Hwy Traffic Counts (2025):	19,567

Mike Velasco

Sr. Commercial Executive

(847) 409-0232

mike.velasco@cbcncrt.com



COLDWELL BANKER
COMMERCIAL
REALTY

PHOTOS

21141 GOVERNORS HWY

21141 Governors Hwy Matteson, IL 60443



Mike Velasco

Sr. Commercial Executive

(847) 409-0232

mike.velasco@cbcrrt.com



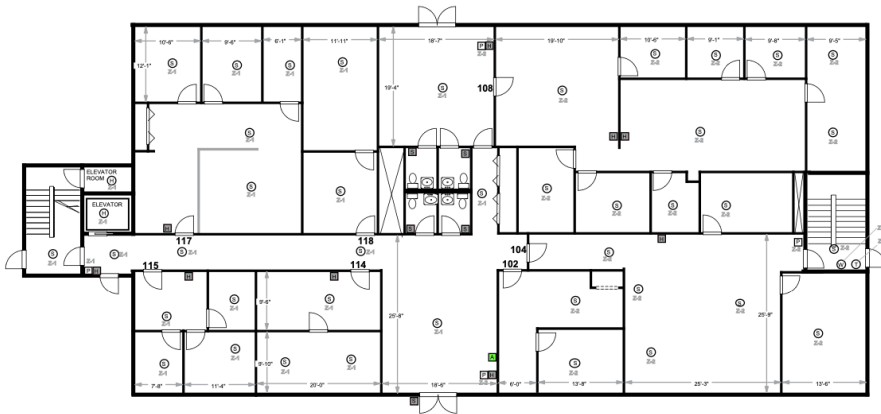
COLDWELL BANKER
COMMERCIAL
REALTY

©2025 Coldwell Banker. All Rights Reserved. Coldwell Banker Commercial® and the Coldwell Banker Commercial logos are trademarks of Coldwell Banker Real Estate LLC. The Coldwell Banker® System is comprised of company owned offices which are owned by a subsidiary of Anywhere Advisors LLC and franchised offices which are independently owned and operated. The Coldwell Banker System fully supports the principles of the Equal Opportunity Act.

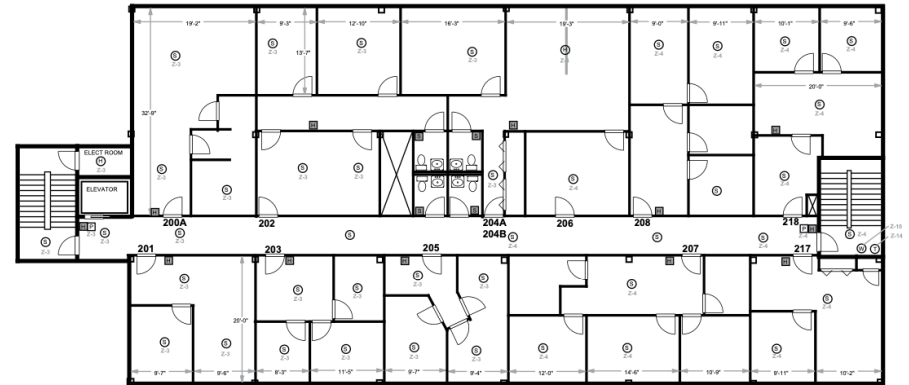
FLOOR PLANS

21141 GOVERNORS HWY
21141 Governors Hwy Matteson, IL 60443

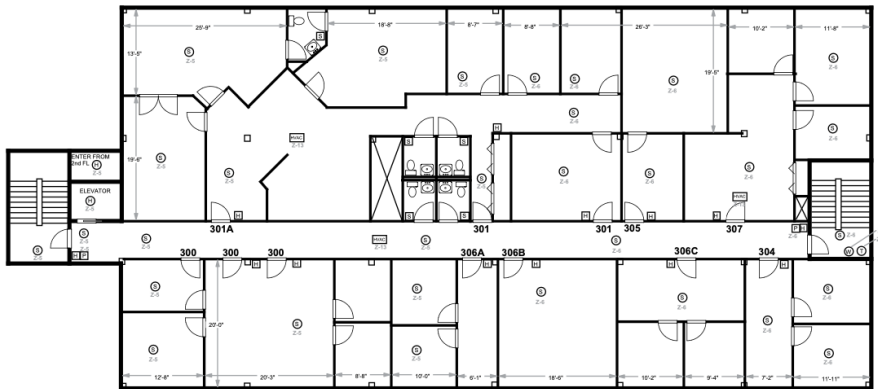
First Floor



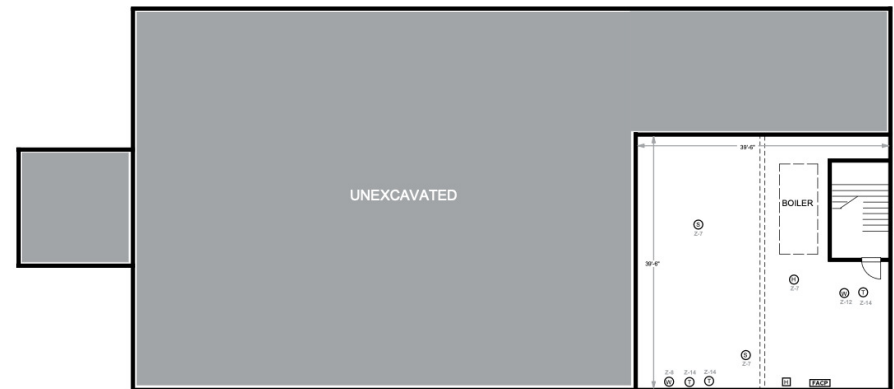
Second Floor



Third Floor



Basement



Mike Velasco

Sr. Commercial Executive

(847) 409-0232

mike.velasco@cbcnrt.com



COLDWELL BANKER
COMMERCIAL
REALTY

AERIAL

21141 GOVERNORS HWY

21141 Governors Hwy Matteson, IL 60443



Mike Velasco

Sr. Commercial Executive

(847) 409-0232

mike.velasco@cbcnrt.com



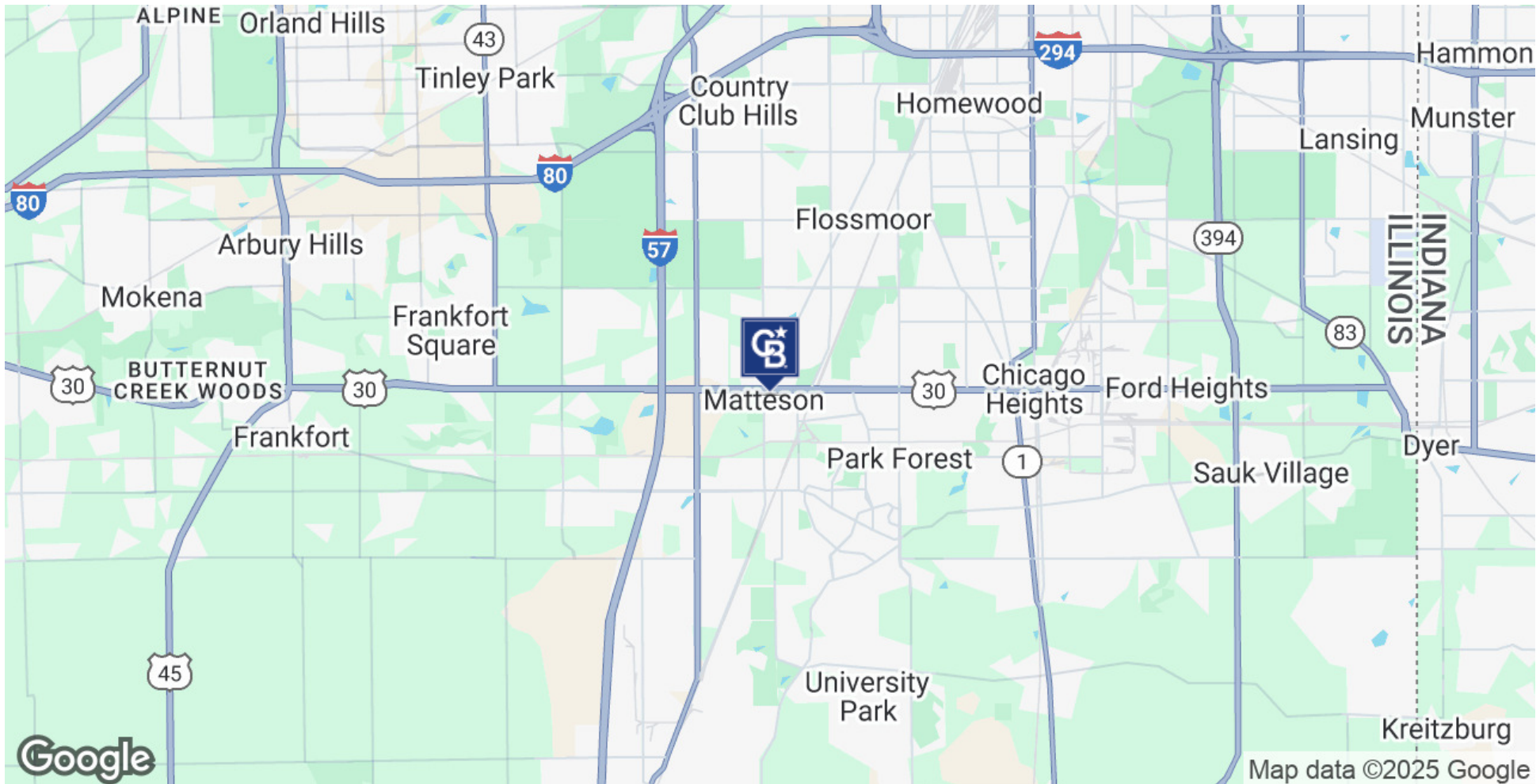
COLDWELL BANKER
COMMERCIAL
REALTY

©2025 Coldwell Banker. All Rights Reserved. Coldwell Banker Commercial® and the Coldwell Banker Commercial logos are trademarks of Coldwell Banker Real Estate LLC. The Coldwell Banker® System is comprised of company owned offices which are owned by a subsidiary of Anywhere Advisors LLC and franchised offices which are independently owned and operated. The Coldwell Banker System fully supports the principles of the Equal Opportunity Act.

LOCATION MAP

21141 GOVERNORS HWY

21141 Governors Hwy Matteson, IL 60443



Mike Velasco

Sr. Commercial Executive

(847) 409-0232

mike.velasco@cbcncrt.com



COLDWELL BANKER
COMMERCIAL
REALTY

©2025 Coldwell Banker. All Rights Reserved. Coldwell Banker Commercial® and the Coldwell Banker Commercial logos are trademarks of Coldwell Banker Real Estate LLC. The Coldwell Banker® System is comprised of company owned offices which are owned by a subsidiary of Anywhere Advisors LLC and franchised offices which are independently owned and operated. The Coldwell Banker System fully supports the principles of the Equal Opportunity Act.

DEMOGRAPHICS

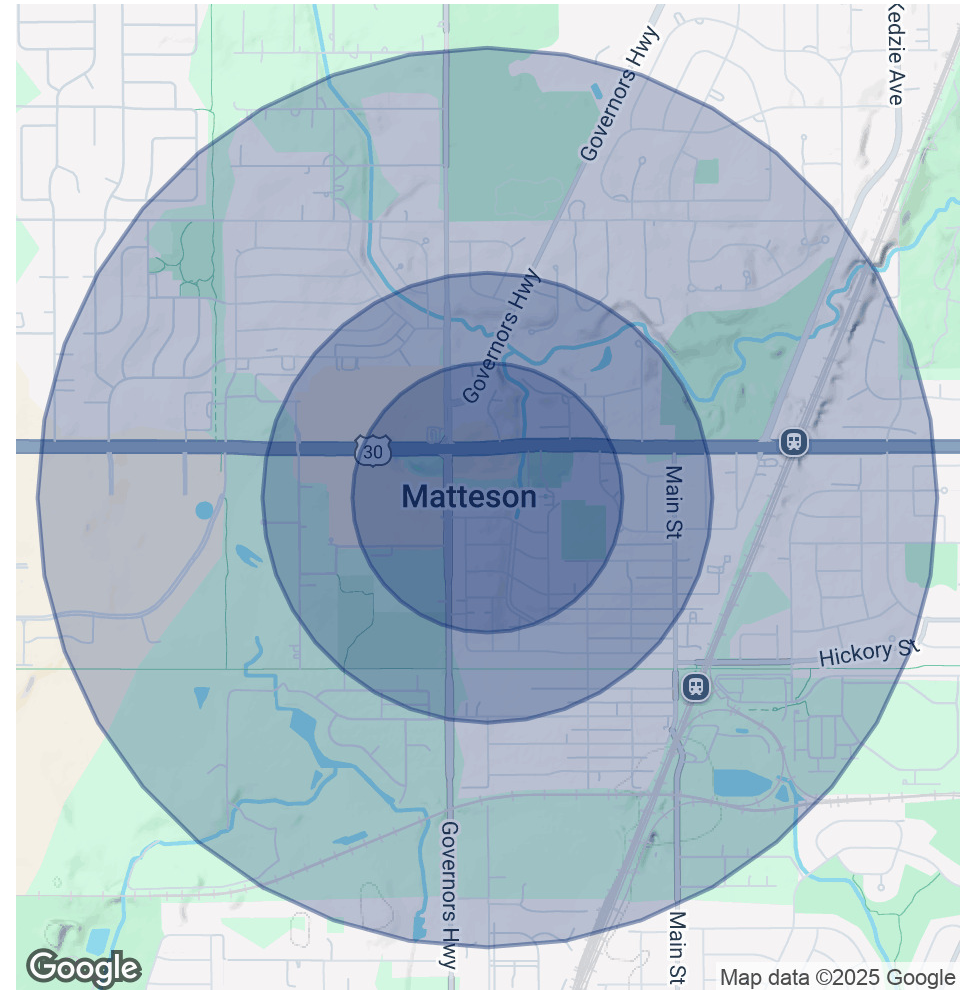
21141 GOVERNORS HWY

21141 Governors Hwy Matteson, IL 60443

POPULATION	0.3 MILES	0.5 MILES	1 MILE
Total Population	664	2,222	7,627
Average Age	42	42	43
Average Age (Male)	39	39	40
Average Age (Female)	45	45	45

HOUSEHOLDS & INCOME	0.3 MILES	0.5 MILES	1 MILE
Total Households	284	928	2,984
# of Persons per HH	2.3	2.4	2.6
Average HH Income	\$72,635	\$76,188	\$88,328
Average House Value	\$197,046	\$210,239	\$214,615

Demographics data derived from AlphaMap



Mike Velasco

Sr. Commercial Executive

(847) 409-0232

mike.velasco@cbcncrt.com



COLDWELL BANKER
COMMERCIAL
REALTY