

FOR LEASE

1000 CORNELL PKWY, OKLAHOMA CITY, OK 73108



HORIZON
COMMERCIAL REAL ESTATE

David Portman, CCIM
Principal

405.850.1107
Horizoncreek.com



PROPERTY INFORMATION

\$6.95/PSF + OPEX

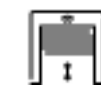
| | |
|---------------|------------|
| PROPERTY TYPE | INDUSTRIAL |
| SPACE SIZE | 10,038 SF |
| CLEAR HEIGHT | 18' |
| ZONING | I-2 |
| YEAR BUILT | 1972 |



SUITE 400-600 FOR LEASE. SITE FEATURES NEW ROOF, SIDEWALKS & TRUCK COURT!



1,000 AMPS OF 480V THREE PHASE POWER



3 OVERHEAD & GRADE-LEVEL DOORS



CLIMATE CONTROLLED SPACE WITH 25 TONS OF ROOF INSTALLED HVAC



OPEN LAYOUT AND AMPLE ROOM FOR EFFICIENT OPERATIONS



VERSATILE SPACE IDEAL FOR MANUFACTURING, DISTRIBUTION, OR STORAGE NEEDS



CONVENIENT ACCESS TO INTERSTATES I-40 & I-44

ALTHOUGH THE INFORMATION HAS BEEN OBTAINED FROM TRUSTWORTHY SOURCES, HORIZON CRE MAKES NO GUARANTEES, ASSURANCES, OR WARRANTIES ABOUT THE COMPLETENESS OR ACCURACY OF THE DATA. THIS PROPERTY IS BEING PRESENTED WITH THE POSSIBILITY OF ERRORS AND OMISSIONS. MODIFICATIONS MAY OCCUR THAT ALTER THE FACTS OF THIS PRESENTATION WITHOUT NOTICE.



HORIZON
COMMERCIAL REAL ESTATE

David Portman, CCIM
Principal

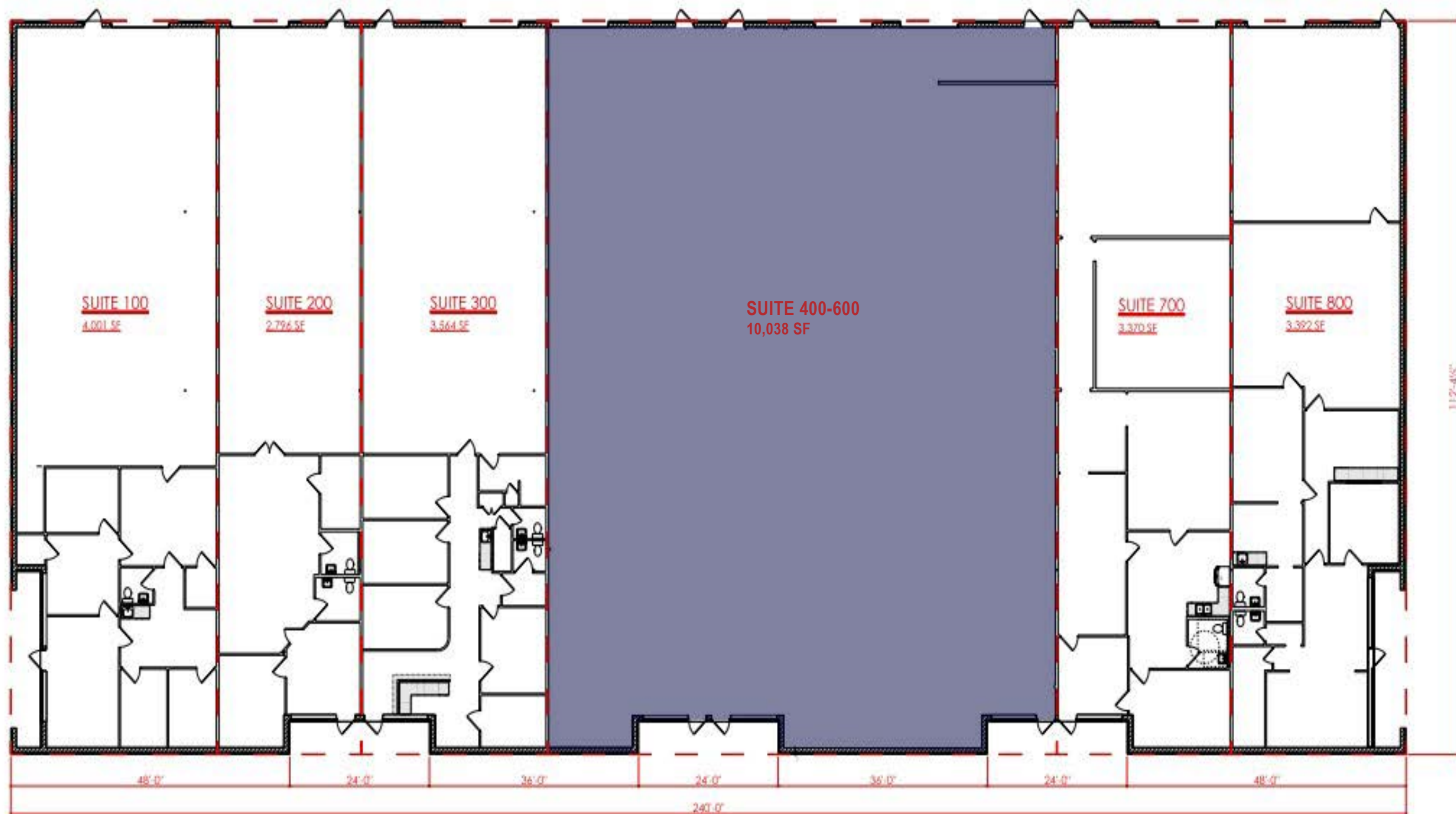
405.850.1107
Horizoncreek.com



HORIZON
COMMERCIAL REAL ESTATE

David Portman, CCIM
Principal

405.850.1107
Horizoncreek.com



TOTAL BUILDING
SCALE 1" = 10'-0"