

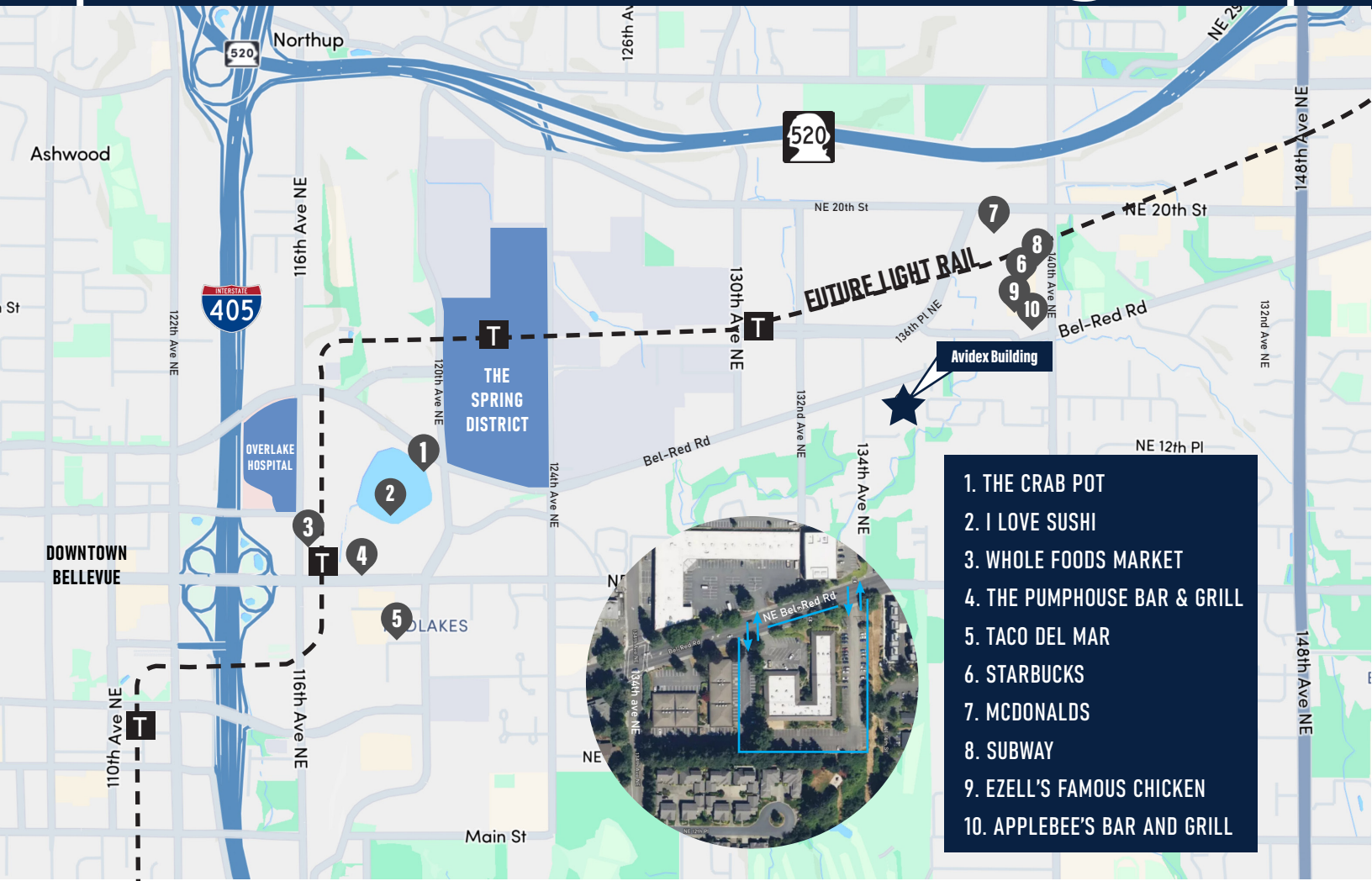
Avidex Building

13555 NE Bel-Red Rd | Bellevue, WA 98005

2,938 RSF Office Sublease Available
Thru September 30, 2026



Avidex Building



Building Features

4.0/1,000 RSF – FREE Parking

Close to Light Rail Station

Easy Access to I-405, I-90, & SR-520

Restaurant and Retail Amenities within Walking Distance

Near Downtown Bellevue &

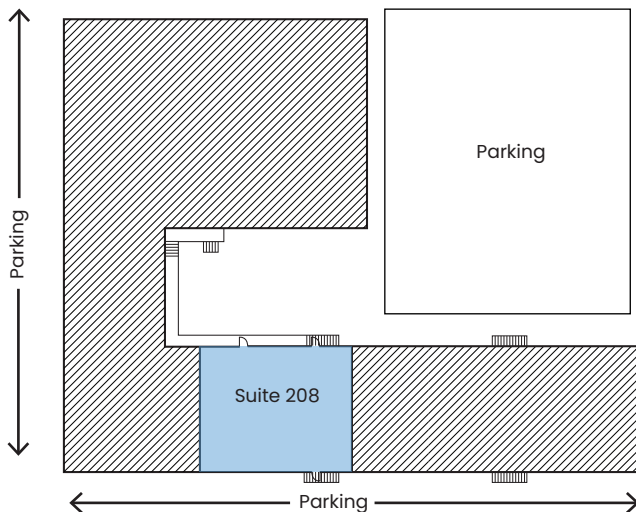
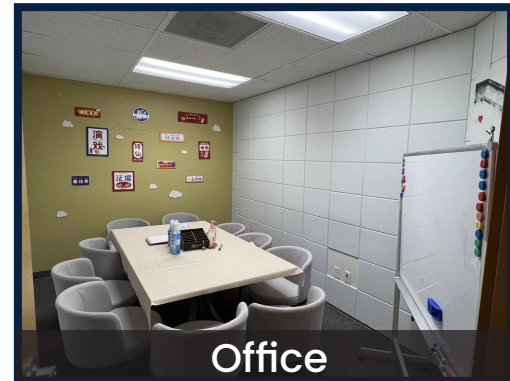
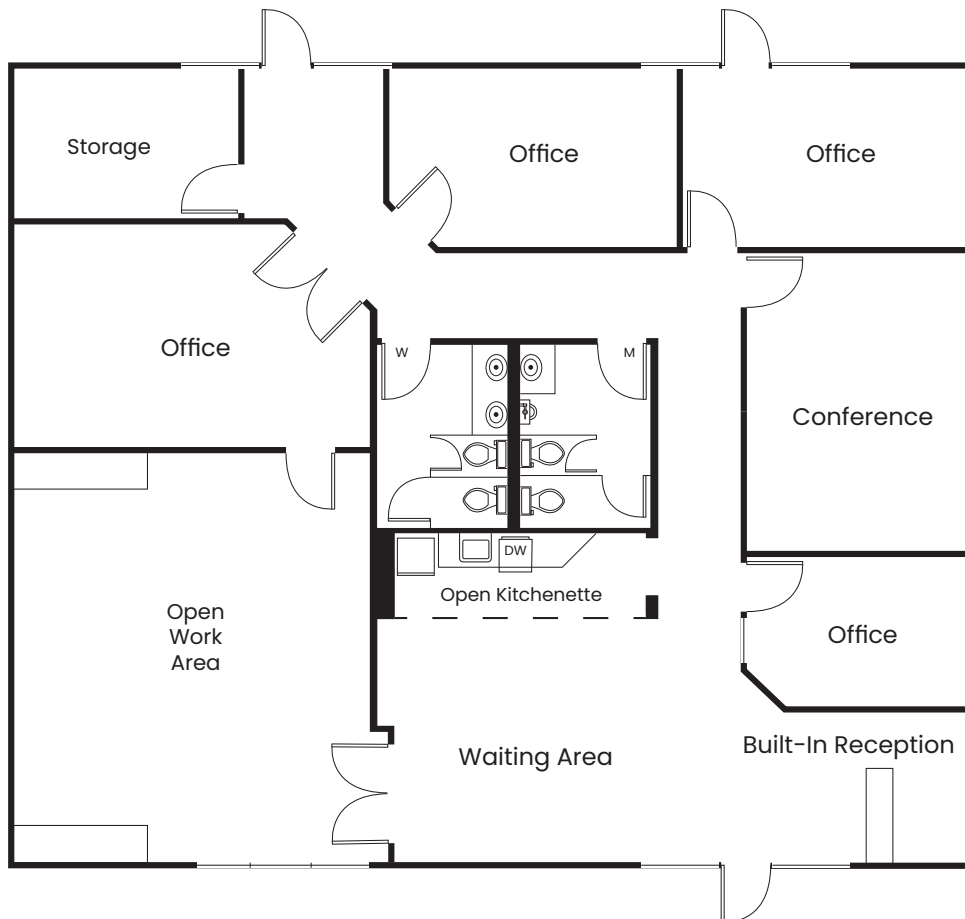
Overlake Hospital/Kaiser Permanente Medical Campus

Avidex Building

13555 NE Bel-Red Rd | Bellevue, WA 98005

Suite 208 | 2,938 RSF

- \$29.00/RSF, Full Service
- Sublease Thru September 30, 2026
- Available Immediately



Avidex Building

13555 NE Bel-Red Rd | Bellevue, WA 98005

Dan Krekel

Senior Vice President

(425) 586-4655 | dkrekel@leibsohn.com

Maxton MacLachlan

Associate Vice President

(425) 586-4659 | mmaclachlan@leibsohn.com

THE INFORMATION CONTAINED HEREIN HAS BEEN RECEIVED FROM SOURCES WE DEEM RELIABLE. WHILE WE HAVE NO REASON TO DOUBT ITS ACCURACY, WE DO NOT GUARANTEE IT. YOU ARE ADVISED TO INDEPENDENTLY VERIFY ALL INFORMATION.

