

For Lease

Detroit Medical Space

3,000 - 10,000 SF

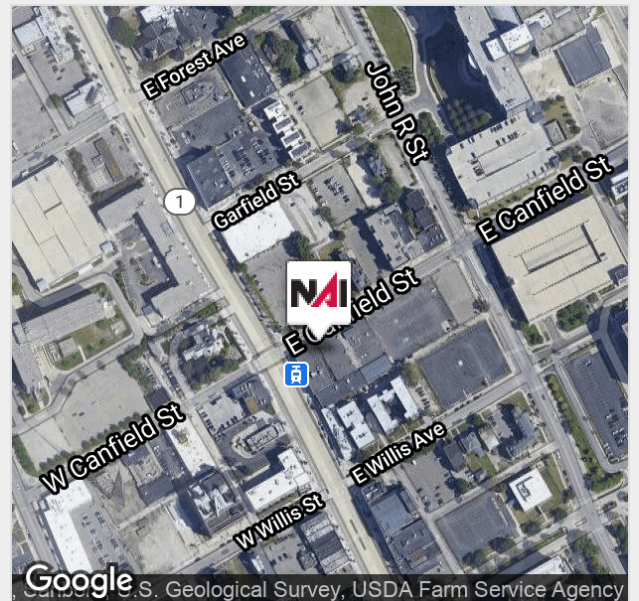


50 E Canfield

Detroit, Michigan 48201

Property Features

- First Floor Available - 3,000-10,000 SF
- Turn Key Medical Suite
- Lease Rate: \$23/PSF Gross plus Utilities
- 24 hour On-Site Secured Parking
- Located on the Q-Line of the M-1 Rail Line on Woodward
- Located in Midtown which is home to 10 theaters, 9 museums, 12 galleries, 40 plus restaurants and an abundance of retail.



For more information:

Michael Ziecik

+1 248 331 0203 | ziecik@farbman.com

Dan Callaway

+1 313 202 2243 | callaway@farbman.com

For Lease: Office/Medical



NAI Farbman

Commercial Real Estate Services, Worldwide.

28400 Northwestern Hwy
Fourth Floor
Southfield, MI 48034

248 353 0500 tel
248 353 0501 fax
naifarbman.com

The information contained herein has been given to us by the owner of the property or other sources we deem reliable. We have no reason to doubt its accuracy, but we do not guarantee it. All information should be verified prior to lease or purchase.

For Lease: Office/Medical



NAI Farbman

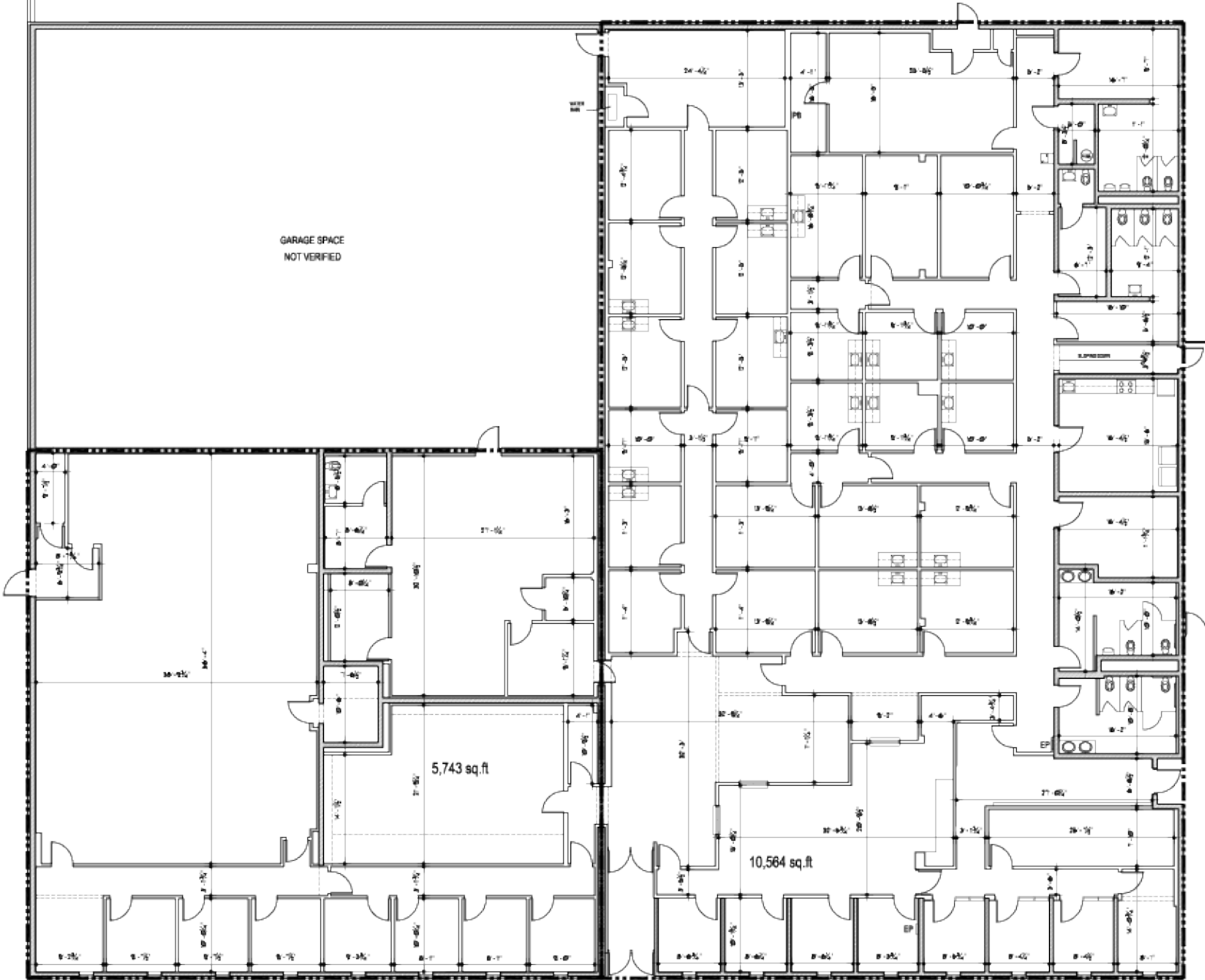
Commercial Real Estate Services, Worldwide.

The information contained herein has been given to us by the owner of the property or other sources we deem reliable. We have no reason to doubt its accuracy, but we do not guarantee it. All information should be verified prior to lease or purchase.

28400 Northwestern Hwy
Fourth Floor
Southfield, MI 48034

248 353 0500 tel
248 353 0501 fax
naifarbman.com

Floor Plan



50 CANFIELD - EXISTING FLOOR PLAN

3/7/2019

16,267 sq.ft.

SCALE: 1/8" = 1'-0"

Map

