



1.38± AC PARCEL FOR SALE

FOR SALE 900 E. MAIN ST. // LAKE BUTLER, FL

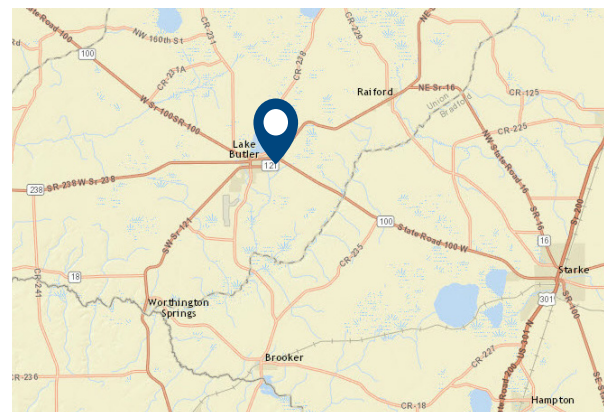
PROPERTY HIGHLIGHTS

- 1.38± acres available for sale.
- Zoning: CG commercial general.
- Located at the intersection of the markets main thoroughfares (SR100/SR 121/East Main St).
- Multiple points of ingress/egress, cross access with CVS.
- Located near the main residential population.
- Traffic Counts: 6,000 AADT on E. Main St.

6,000 AADT on NE SR 121

SALE PRICE: \$295,000

LOCATION MAP

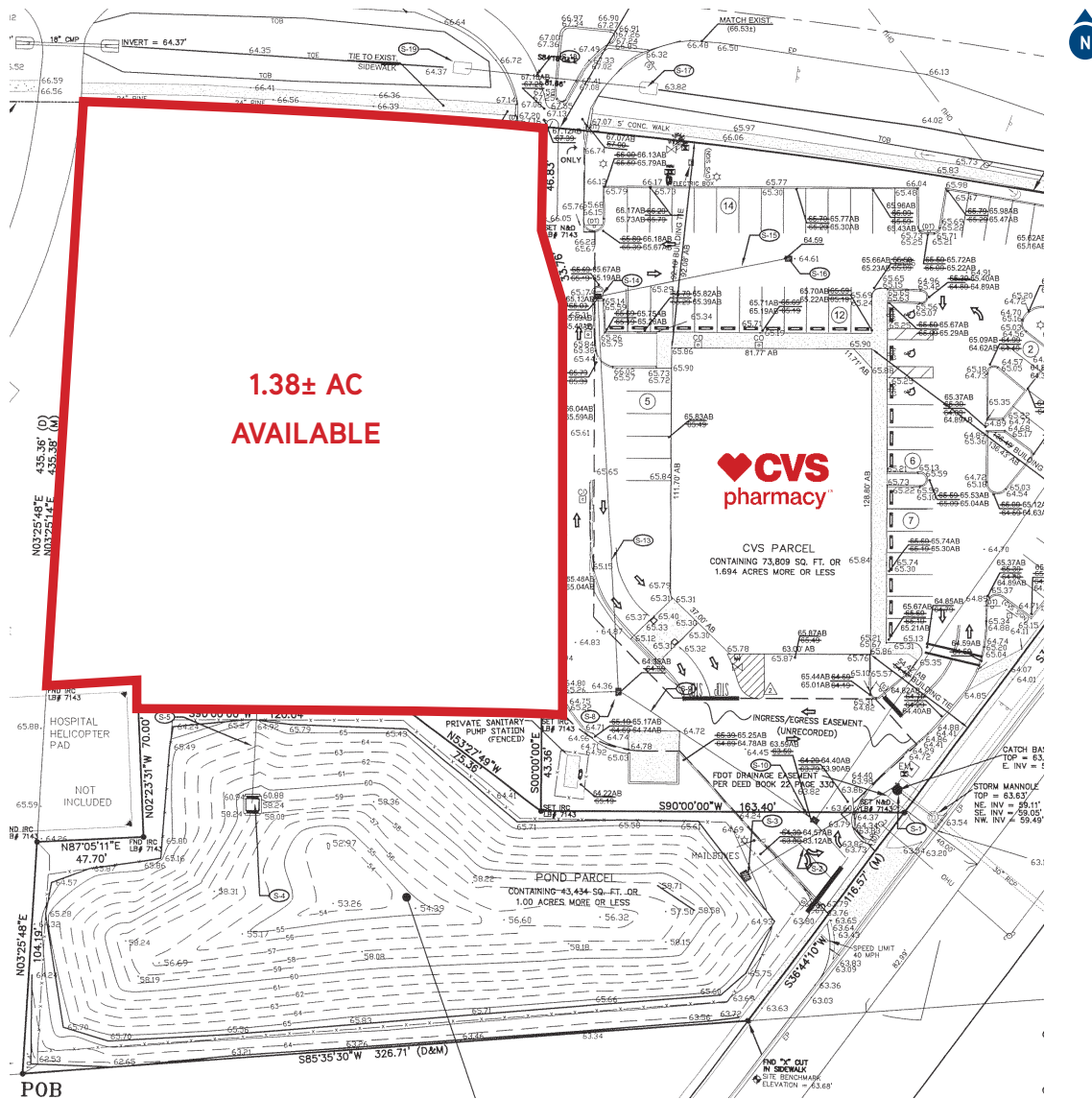


CONTACT US

Scott Corbin
Executive Managing Director,
Retail Services
+1 407 362 6164
scott.corbin@colliers.com

Colliers International
255 S. Orange Avenue,
Suite 1300
Orlando, FL 32801
www.colliers.com

MARKET AERIAL



DEMOGRAPHICS



Population
 3-Mile: 3,697
 5-Mile: 7,800
 10-Mile: 19,314



Daytime Population
 3-Mile: 4,743
 5-Mile: 7,855
 10-Mile: 14,959



Average HH Income
 3-Mile: \$49,879
 5-Mile: \$50,061
 10-Mile: \$53,182



Households
 3-Mile: 1,270
 5-Mile: 1,847
 10-Mile: 4,534

This document has been prepared by Colliers International for advertising and general information only. Colliers International makes no guarantees, representations or warranties of any kind, expressed or implied, regarding the information including, but not limited to, warranties of content, accuracy and reliability. Any interested party should undertake their own inquiries as to the accuracy of the information. Colliers International excludes unequivocally all inferred or implied terms, conditions and warranties arising out of this document and excludes all liability for loss and damages arising there from. This publication is the copyrighted property of Colliers International and/or its licensor(s). ©2019. All rights reserved.

