

Office | For Lease

CBRE

Ashley Overlook

±2,500 - 83,876 SF Available

4390 Belle Oaks Drive
Charleston, SC 29405

Located in The Executive Park at Faber Place



Ashley Overlook

4390 Belle Oaks Drive | Charleston, SC 29405

For Lease

Property Highlights

- + ±102,874 SF Class A Building located in the Executive Park at Faber Place
- + Short Drive to various dining and retail in North Charleston or West Ashley
- + Convenient interstate access to I-526
- + Building signage available for tenant's who lease an entire floor
- + ±80,500 SF total available with suites ranging from ±2,500 - 26,600 SF
- + \$26.00 per square foot, full service gross

\$26

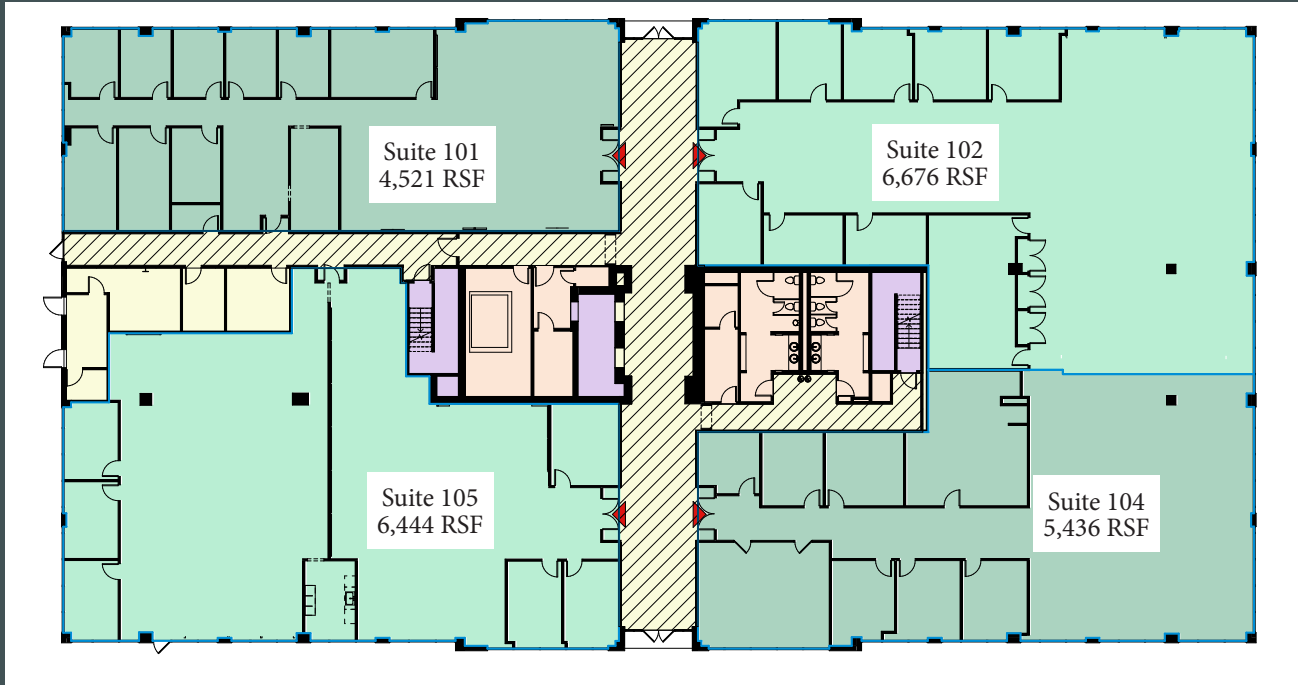
PSF, Full Service

±83,876

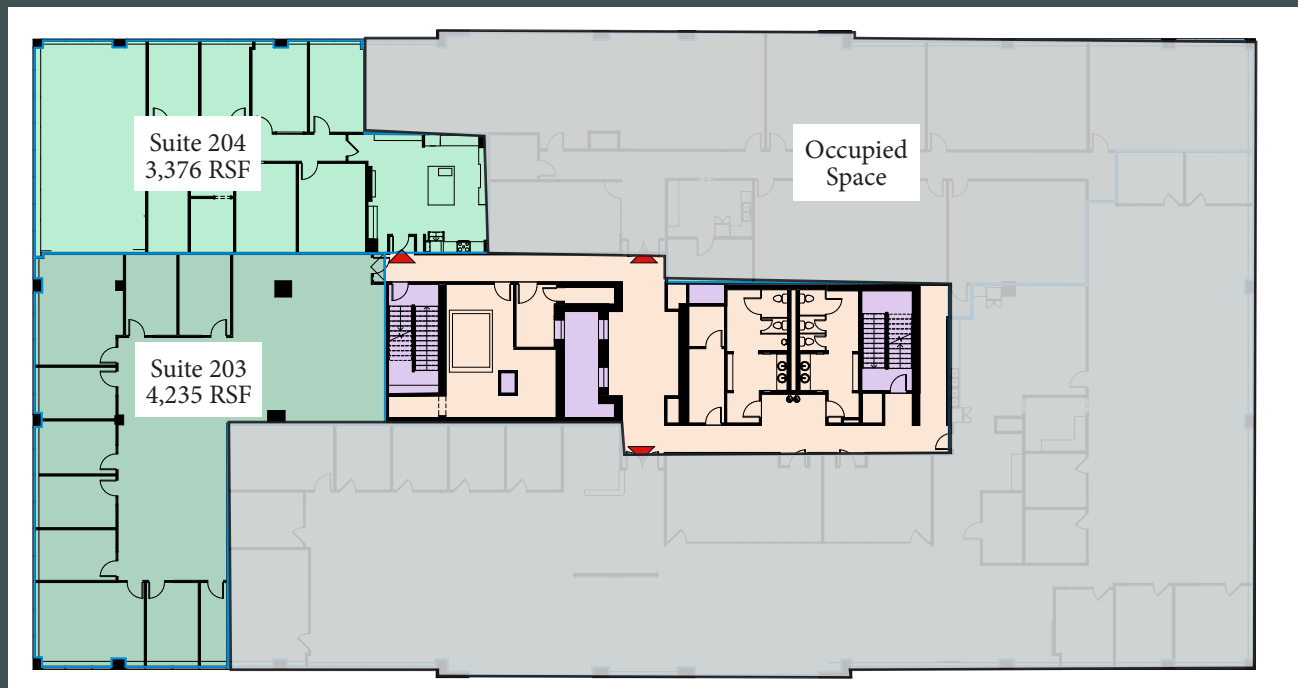
Total Square Feet Available (divisible)



Floor Plans

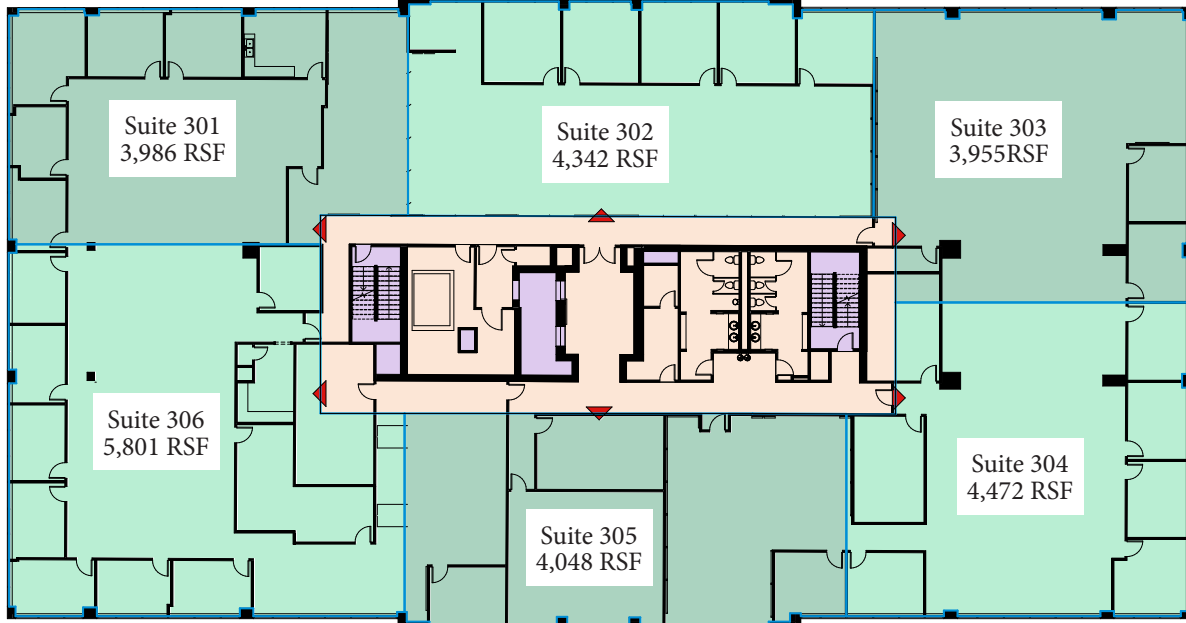


First Floor: ±4,521 - 23,077 SF Available

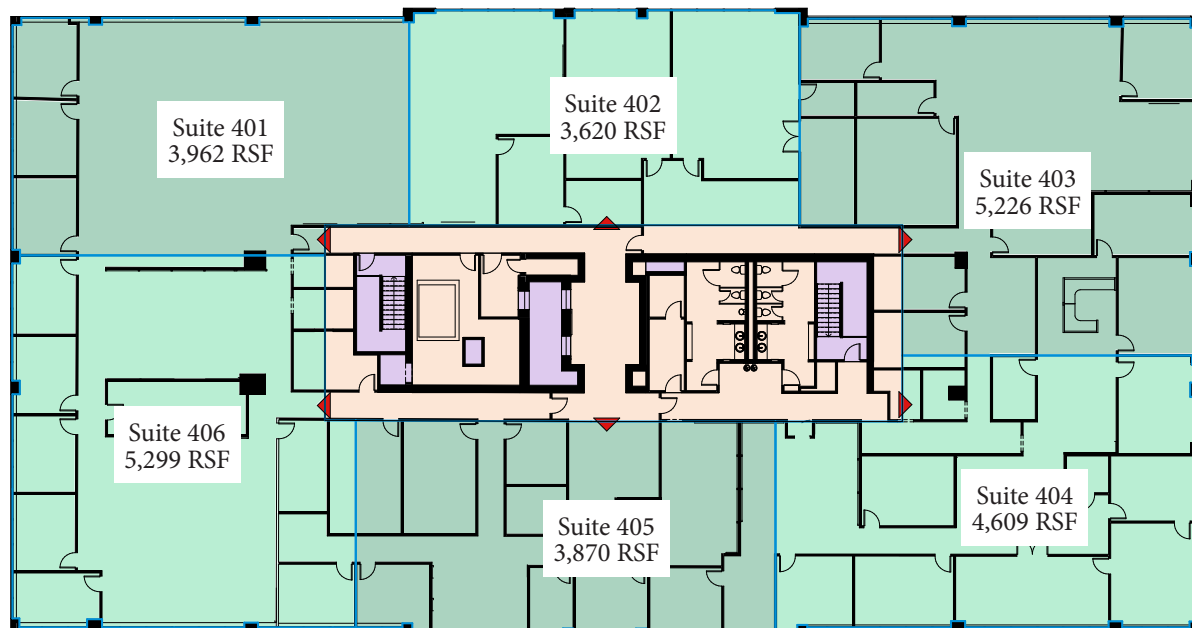


Second Floor: ±3,376 - 7,611 SF Available

Floor Plans



Third Floor: ±3,955 - 26,603 SF Available



Fourth Floor: ±3,620 - 26,585 SF Available

Ashley Overlook

4390 Belle Oaks Drive | Charleston, SC 29405

For Lease



Destination	Time
Charleston International Airport	3.9 miles
West Ashley	4.4 miles
Downtown Charleston	9.2 miles
I-26	3.5 miles

Contact Us

Charles Carmody

Senior Vice President

+1 843 577 1155

charles.carmody@cbre.com

Ryan Carmody

Senior Associate

+1 843 577 1162

ryan.carmody@cbre.com

© 2024 CBRE, Inc. All rights reserved. This information has been obtained from sources believed reliable, but has not been verified for accuracy or completeness. You should conduct a careful, independent investigation of the property and verify all information. Any reliance on this information is solely at your own risk. CBRE and the CBRE logo are service marks of CBRE, Inc. All other marks displayed on this document are the property of their respective owners, and the use of such logos does not imply any affiliation with or endorsement of CBRE. Photos herein are the property of their respective owners. Use of these images without the express written consent of the owner is prohibited.