

SUITE 105 • 99-128 AIEA HEIGHTS DR

AIEA, HI 96701



ChaneyBrooks



PROPERTY DESCRIPTION

This 688 SF ground-floor leasehold space at 99-128 Aiea Heights Drive, Suite 105, has been fully renovated and is in like-new condition. Featuring a welcoming reception area, three private offices each with its own sink, and a restroom, the unit also includes the added convenience of an in-suite washer and dryer. Ideally suited for a variety of businesses—such as a medical or dental office, spa or wellness center, consulting or law firm, or beauty salon—the space offers flexibility for many professional uses. Situated in a prime, central location with over 240,000 people within a 5-mile radius, this property presents an excellent opportunity for buyers seeking to invest in a high-demand area.

PROPERTY SUMMARY

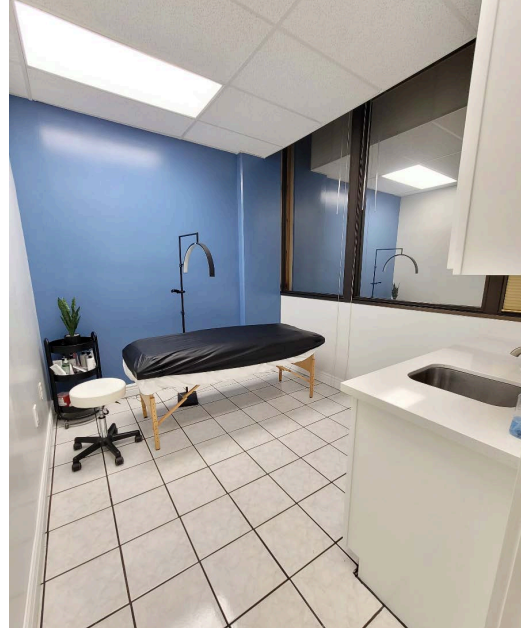
ADDRESS Suite 105, 99-128 Aiea Heights Dr, Aiea, HI 96701

SIZE 688 SF

ZONING R5

TENURE Leasehold until June 30th 2032

PRICE \$160,000



CONTACT US FOR MORE INFORMATION

ANTHONY PROVENZANO (B), CCIM, SIOR
+1 808 387 3444
aprovenzano@chaneybrooks.com

KELLY A. VEA (S), CCIM
+1 808 489 2703
kvea@chaneybrooks.com

TREVOR BLAKE (S)
+1 808 778 7409
tblake@chaneybrooks.com

1440 Kapiolani Blvd, Suite 1010
Honolulu, Hawaii 96814
www.chaneybrooks.com

©2024 CUSHMAN & WAKEFIELD CHANEYBROOKS. ALL RIGHTS RESERVED. THE INFORMATION CONTAINED IN THIS COMMUNICATION IS STRICTLY CONFIDENTIAL. THIS INFORMATION HAS BEEN OBTAINED FROM SOURCES BELIEVED TO BE RELIABLE BUT HAS NOT BEEN VERIFIED. NO WARRANTY OR REPRESENTATION, EXPRESS OR IMPLIED, IS MADE AS TO THE CONDITION OF THE PROPERTY (OR PROPERTIES) REFERENCED HEREIN OR AS TO THE ACCURACY OR COMPLETENESS OF THE INFORMATION CONTAINED HEREIN, AND SAME IS SUBMITTED SUBJECT TO ERRORS, OMISSIONS, CHANGE OF PRICE, RENTAL OR OTHER CONDITIONS, WITHDRAWAL WITHOUT NOTICE, AND TO ANY SPECIAL LISTING CONDITIONS IMPOSED BY THE PROPERTY OWNER(S). ANY PROJECTIONS, OPINIONS OR ESTIMATES ARE SUBJECT TO UNCERTAINTY AND DO NOT SIGNIFY CURRENT OR FUTURE PROPERTY PERFORMANCE.