

# FOR LEASE

## Kenmore Village Square

6610 NE 181st St, Kenmore, WA 98028



PACIFIC BRIDGE | [www.pacificbridgere.com](http://www.pacificbridgere.com) | 425.429.6551 | [info@pacificbridgere.com](mailto:info@pacificbridgere.com)



## PROPERTY SUMMARY

---

**Kenmore Village Square** offers a flexible medical/office space located in the heart of downtown Kenmore. Only 2 blocks away from the north shores of Lake Washington, this property is a short distance to all amenities. Kenmore Village Square is surrounded by new development, and a block away from transit. Benefit from the explosive growth that downtown Kenmore has to offer. \*Lease rate incentives available, contact listing agent for more information.\*

## LEASE INFORMATION

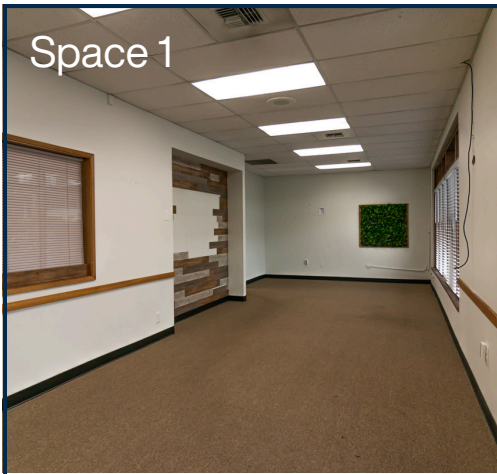
---

<b>Location</b>	6610 NE 181st St, Kenmore, WA 98028
<b>County</b>	King
<b>SF Available ±</b>	1,080 - 3,250
<b>Lease Type</b>	NNN
<b>Lease Rate</b>	Contact Listing Agent

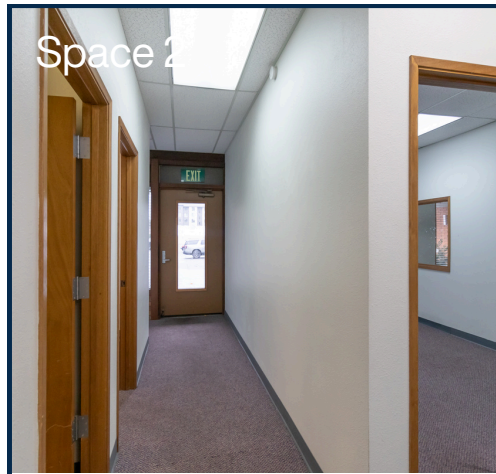
## PROPERTY HIGHLIGHTS

---

- Meticulously Maintained Property
- Updated Roof
- New HVAC
- Pylon Signage
- Easy Access to Highway 522 and Major Freeways
- Resurfaced Asphalt and Re-Striped
- Office/Medical Buildout



Space 1



Space 2



± 1,080 SF Available



± 3,250 SF Available



**Space 1 Includes:** Lobby/Reception area, Mail Room, 4 Medical Rooms, Break Room, 2 Restrooms, Office

**Space 2 Includes:** 3 Offices, Break Room with Restroom



# KENMORE VILLAGE SQUARE

Exclusively Marketed By:  
**PACIFIC BRIDGE**

The information contained in this marketing is proprietary. This marketing flyer is intended to be reviewed only by the party receiving it from Pacific Bridge and should not be made available to any other party without the written consent of Pacific Bridge. The information contained herein is not substitute for a thorough due diligence investigation. Pacific Bridge has not made any investigation, and makes no warranty or representation with respect to the financial information, the future financial performance of the Property, the size and square footage of the Property, the improvements, the zoning of the Property, the presence or absence of contaminating substances, PCBs or asbestos, the compliance with local, state and federal regulations, the physical condition of the improvements thereon, or financial condition or business prospects of any tenant. The information contained in this marketing flyer has been obtained from sources we believe reliable; however, Pacific Bridge has not verified, and will not verify, any of the information contained herein, nor has Pacific Bridge conducted any investigation regarding these matters and makes no warranty or representation regarding the accuracy or completeness of the information provided. This marketing flyer is submitted subject to the possibility of errors, omissions and or change of price, rental rates or other conditions, prior sale, lease or financing, or withdrawal without notice. Pacific Bridge and the Property Ownership have included projections, opinions, assumptions or estimates for example only, and they may not represent the current or future performance of the Property. All potential tenants must take appropriate measures to verify all of the information set forth herein. Prospective tenants shall be responsible for their costs and expenses of investigating the subject property.