



M E R I D I A N

147 S. CHERRY STREET, SUITE 200 | WINSTON-SALEM, NC 27101 | P 336.722.1986 | F 336.723.3173 | MERIDIANREALTY.COM

4,510± SF Freestanding Office Building

185 Charlois Blvd  
Winston-Salem, NC 27103



Click or Scan for Virtual Tour

### Property Details

- Building 4,510± SF
- Land Size: 0.54± AC
- Zoning: GO
- Front Door Parking
- Two points of entry
- Conveniently located near retail, restaurants and shopping
- Available July 1, 2026

### Demographics

	1mi	3mi	5mi
Population	6,695	70,346	167,784
Household	3,133	33,873	72,660
Household Income	\$68,291	\$72,963	\$65,249

**FOR LEASE: \$20 NNN**

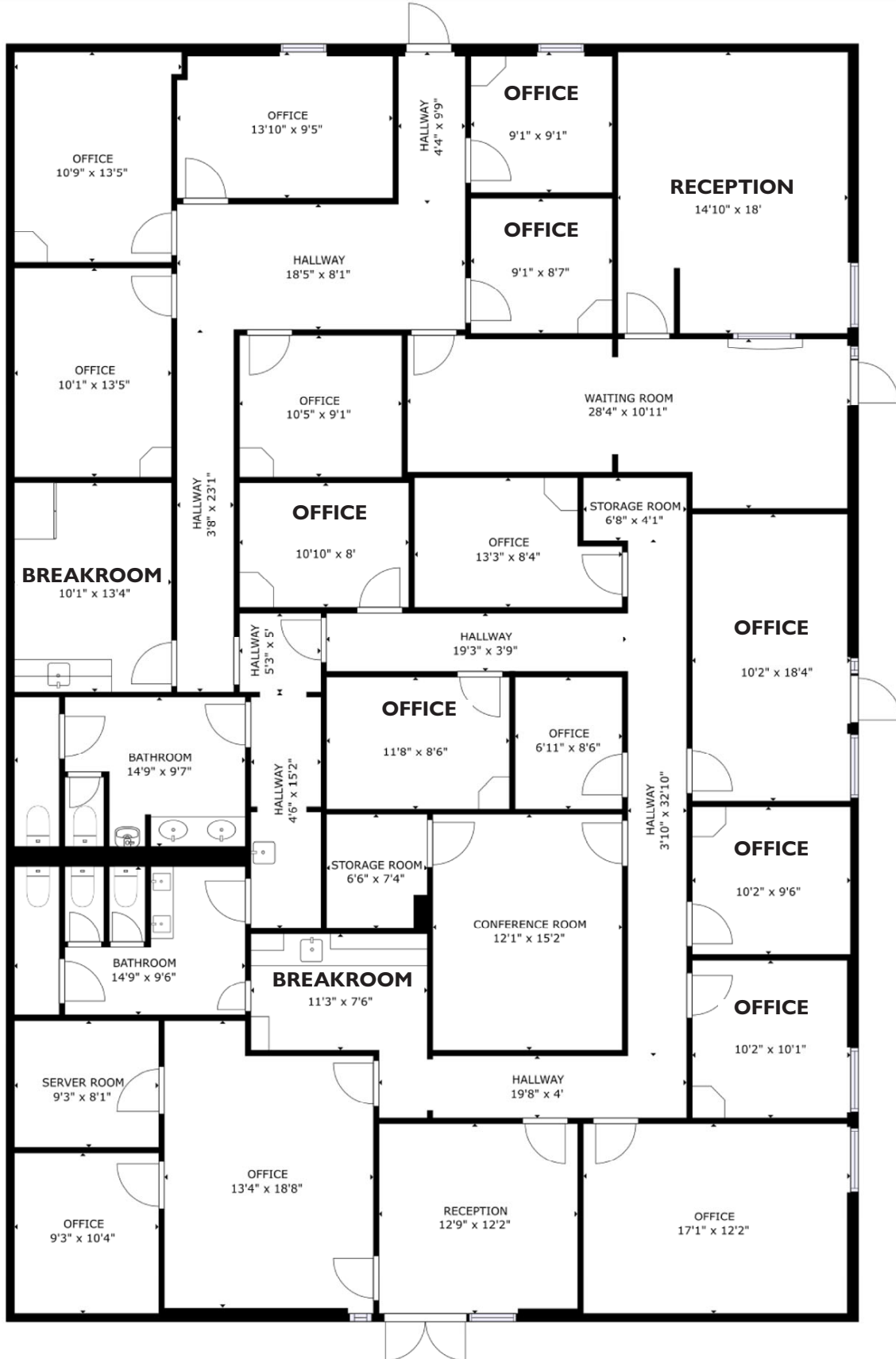
For more information:

**Spencer T. Bennett, CCIM**  
Spencer@meridianrealty.com  
336.480.2327

Photos



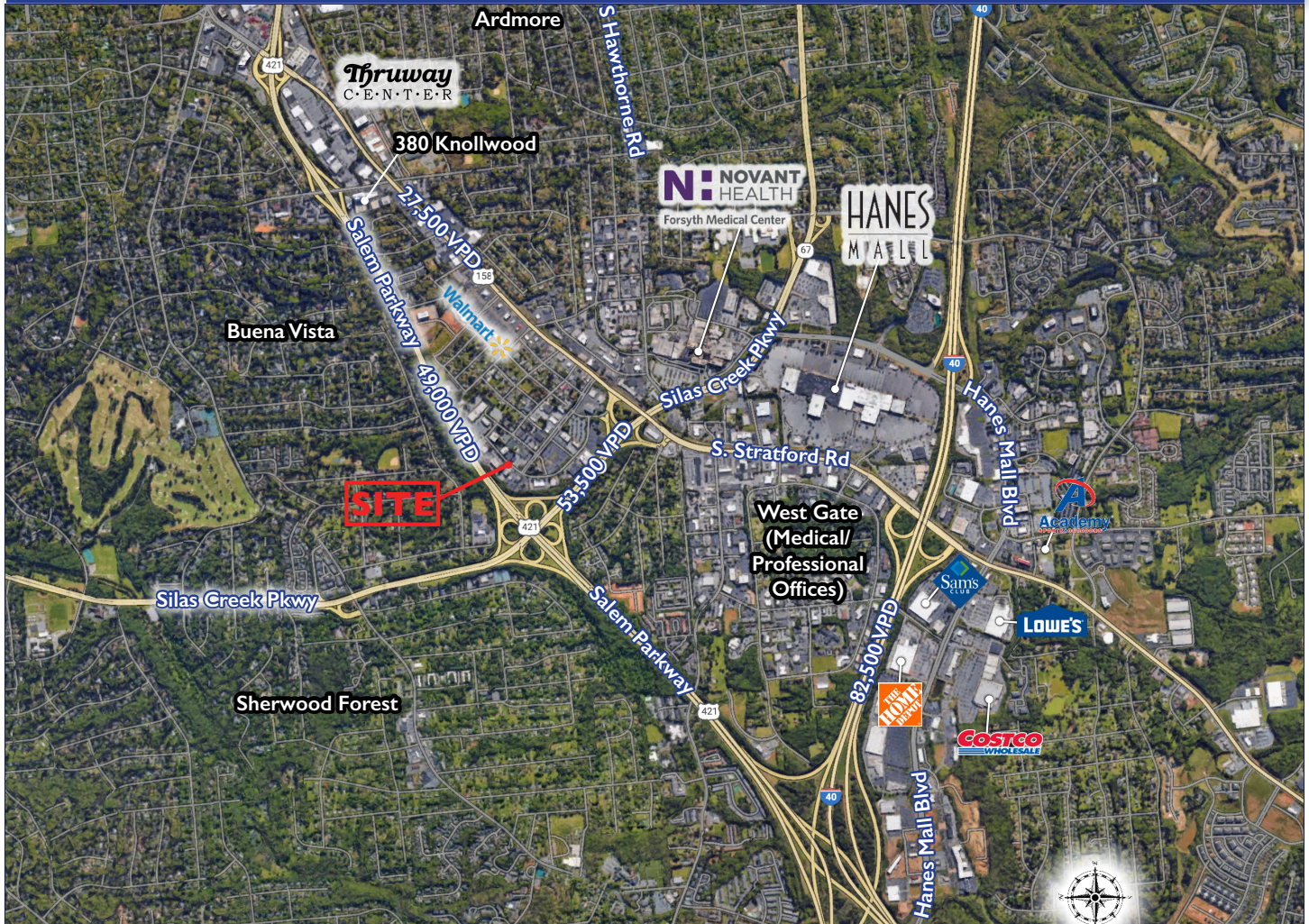
# Floor Plan



## Bird's Eye Aerial



## Aerial



No warranty or representation (express or implied) is made as to the accuracy or completeness of the information set forth herein. All information is submitted subject to errors, omissions, change of price, prior lease or sale, and withdrawal without notice. All marketing material produced by the Meridian Realty Group is proprietary. Any reproduction is expressly prohibited.



THE MERIDIAN REALTY GROUP | 147 S. CHERRY STREET, SUITE 200 | WINSTON-SALEM, NC 27101

P 336.722.1986 | F 336.723.3173