

# KENNEDY SQUARE

4950 Kennedy Blvd. | Tampa, FL 33609

FOR LEASE

**TMC**  
THE MAHR COMPANY

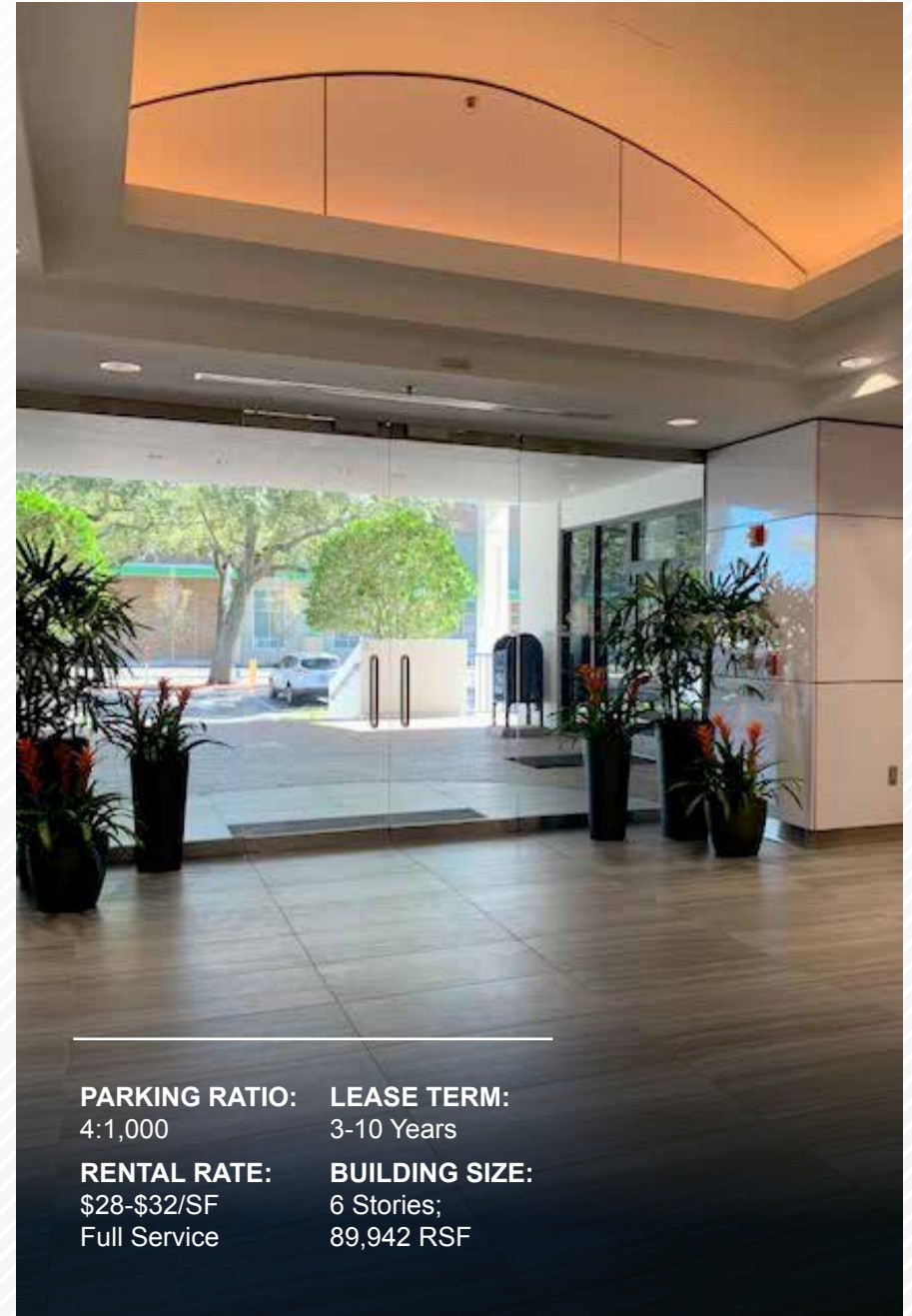


## PROPERTY DETAILS

- Prime Westshore Location
- Directly Across from Westshore Plaza Shopping Mall, Bank & ATM on premises
- Adjacent to Westshore Publix on Kennedy
- Prominent Kennedy Street Address
- Easy Ingress / Egress at light-controlled intersection
- Convenient access to all main Roadways to Pinellas County and all points North South East and West

### Available Suites:

- 2nd Floor: 13,774 SF - divisible to: 1,000 RSF and up!
- 3rd Floor:
  - Suite 310 - 2,128 SF - Coming Available 2/1/2024
  - Suite 306 - 721 SF - Coming Available Early 2024



**PARKING RATIO:**  
4:1,000

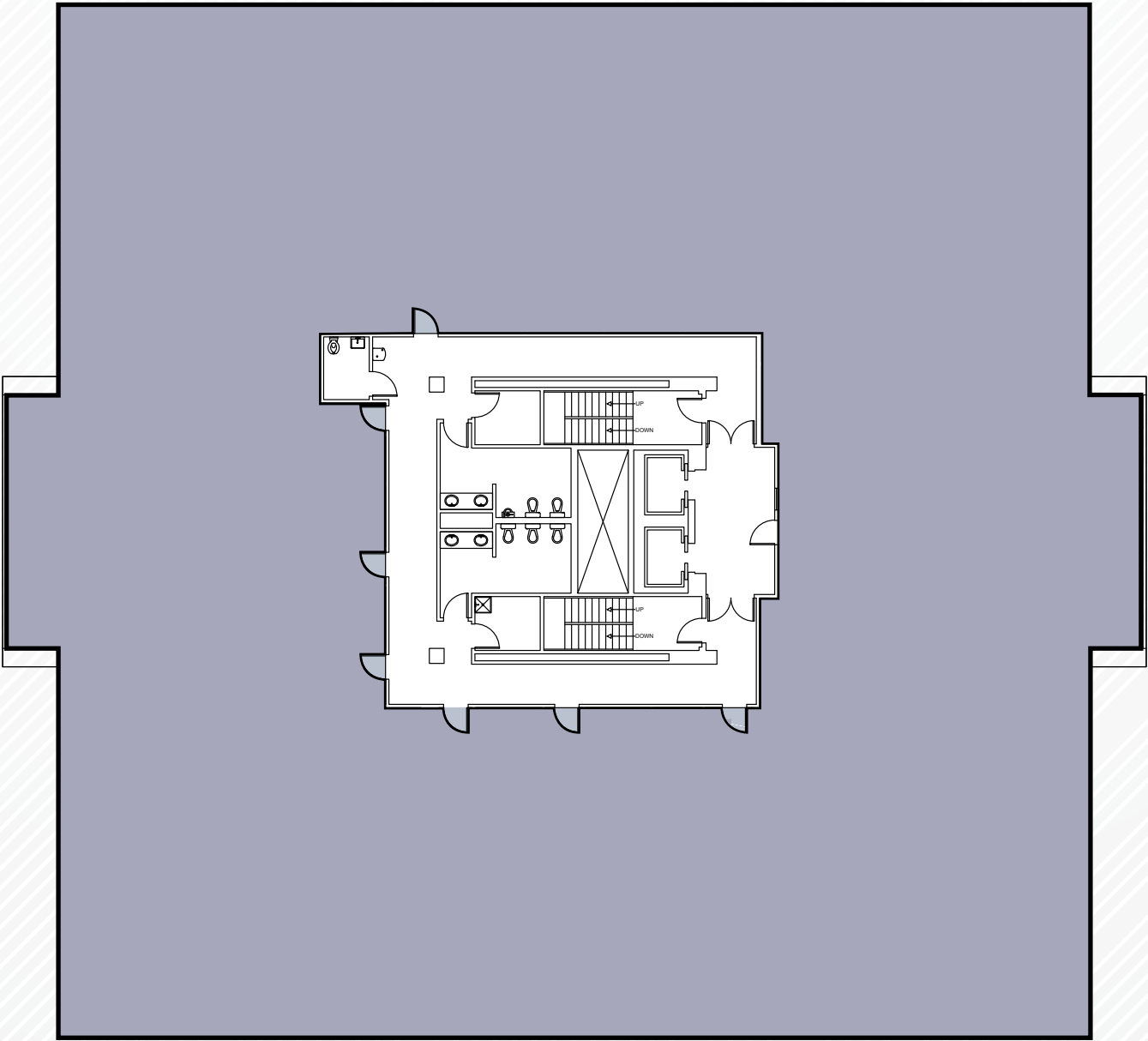
**RENTAL RATE:**  
\$28-\$32/SF  
Full Service

**LEASE TERM:**  
3-10 Years

**BUILDING SIZE:**  
6 Stories;  
89,942 RSF

4950 KENNEDY FLOOR PLANS

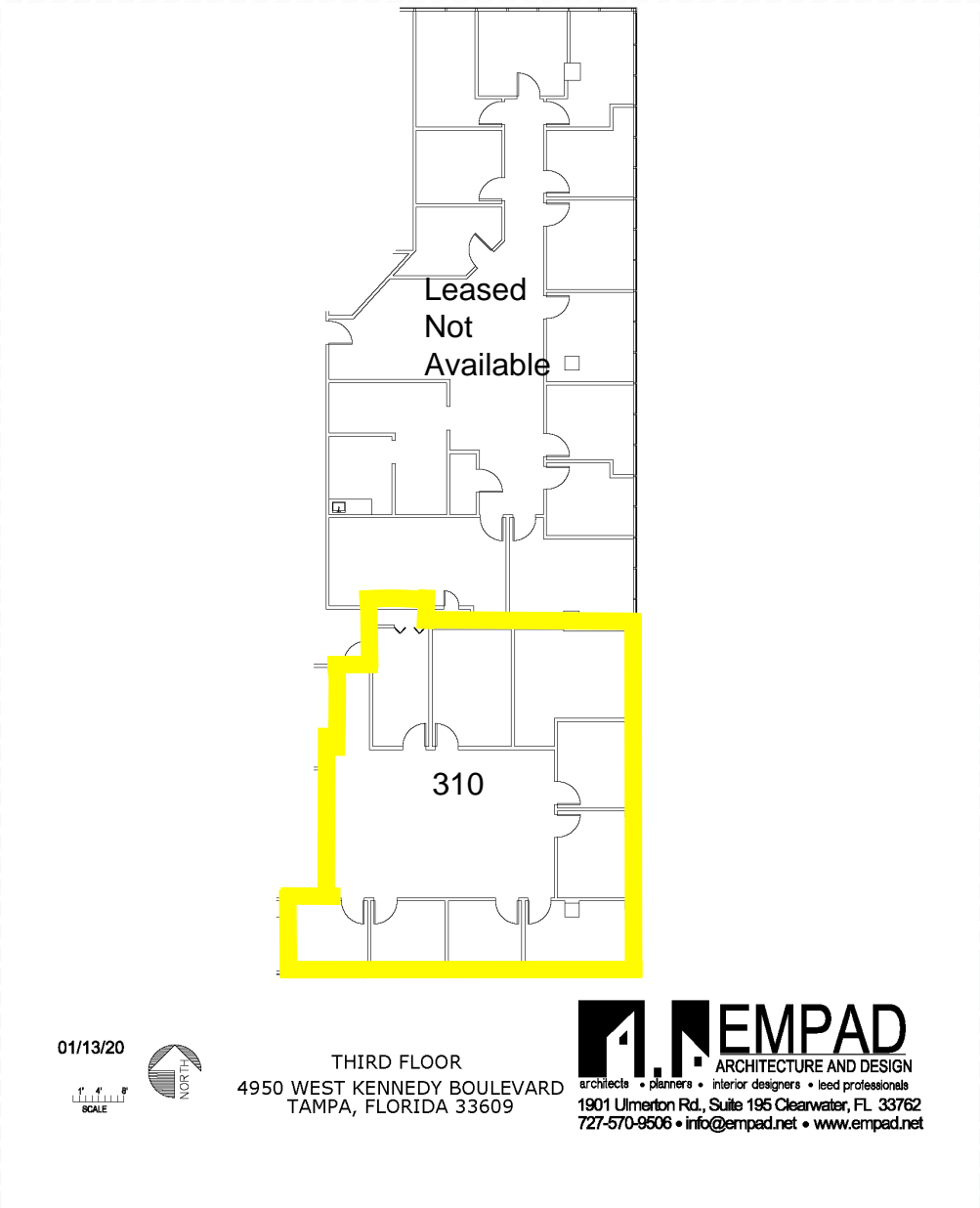
15,845 Square Feet



*\*Not to scale*

4950 KENNEDY FLOOR PLANS

2,128 Square Feet







4950 W Kennedy Blvd.  
Suite 301  
Tampa, FL 33609  
813.835.4888

**Amy Cox**  
813.205.2427  
acox@mahrcompany.com

**Thomas Grandoff**  
813.299.0399  
tgrandoff@mahrcompany.com

[tmc-themahrcompany.com](http://tmc-themahrcompany.com)

The material contained herein together with and including but not limited to all attachments, images, exhibits, url's, and documents is based in part upon information supplied by the owner of the property, their representative(s) or agents, and in part upon information obtained by TMC The Mahr Company from sources it deems reliable. Summaries of any documents are not intended to be comprehensive or all inclusive but rather only outlines of some of the provisions contained therein. No warranty or representation, expressed or implied, is made as to the accuracy or completeness of the information contained herein, and same is submitted subject to errors, omissions, change of price, term, rates, rental or other conditions, withdrawal without notice, unavailability of proposed space, and to any other conditions imposed by building owners, their representative(s) or agents. The recipient of this information must rely on their own due diligence, investigation, evaluation and judgment as to the advisability of this transaction.



## PROPERTY LOCATION

4950 W Kennedy Blvd. is ideally located conveniently in Westshore Business District. Located on Kennedy Blvd. (Just West of the Kennedy/Westshore intersection).

Based in Tampa Bay Florida | Statewide Emphasis | National Network