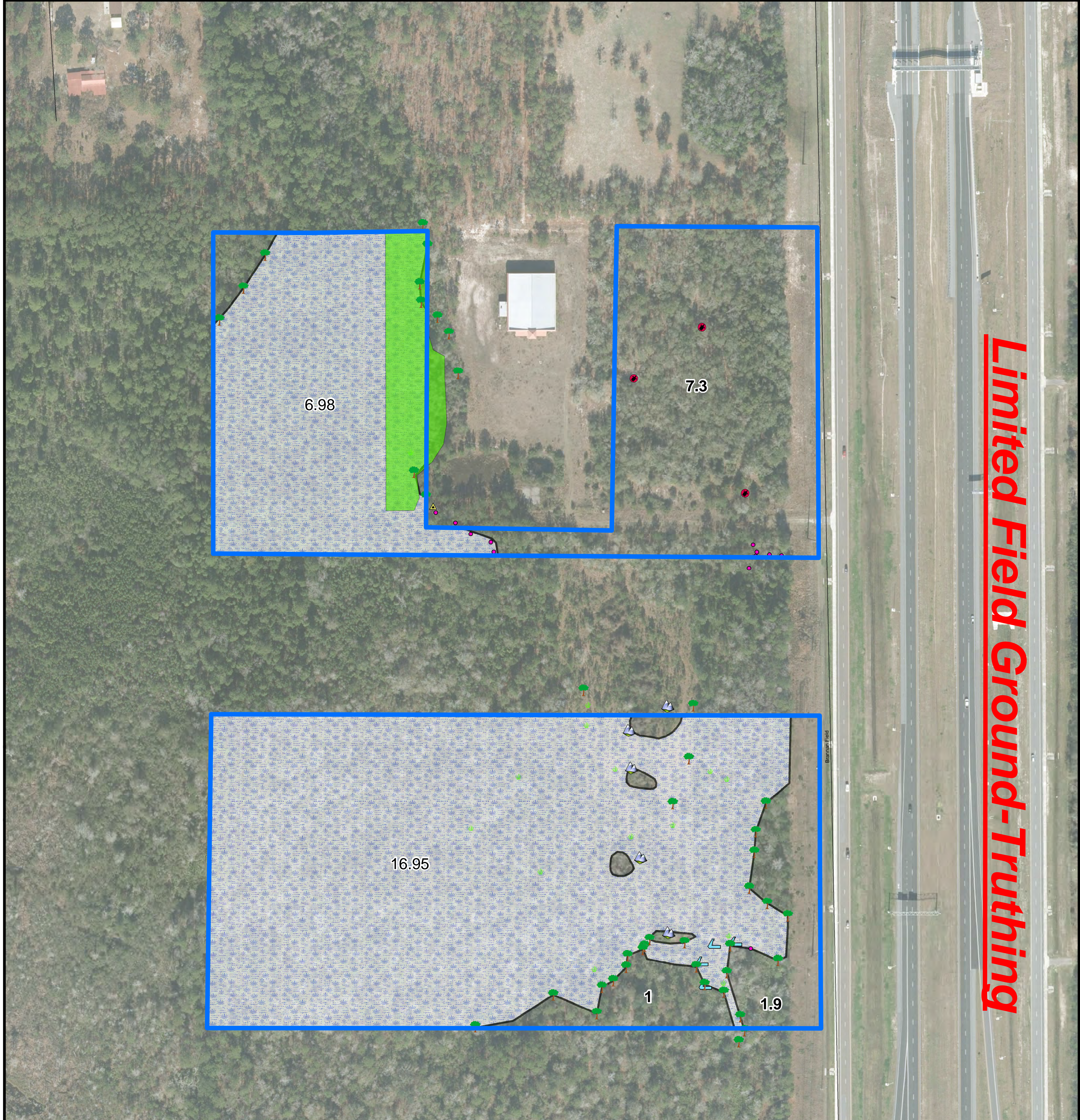


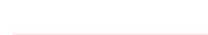








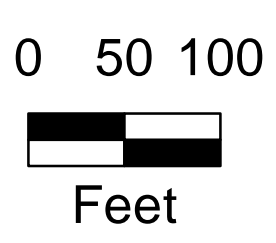


Limited Field Ground-Truthing



Legend

-  Project Area +/- 34.78 ac.
-  Approximate Wetlands +/- 23.93
-  Spindler_Contours
-  Regulatory Easements 2019
- GPS Points**
1-27-22
-  Other consultant wetland line
-  Wetland Points
-  ditch
-  Upland Edge
-  Gopher Tortoise Burrows
-  Uplands
-  Pond Area



Sources: ESRI Aerial Basemap

Information represented on this map is for planning purposes only.

CARTER ENVIRONMENTAL SERVICES, INC.



42 Masters Drive
St. Augustine, FL 32084
904-540-1786

www.carterenv.com

Preliminary Wetland Assessment with Limited Field Ground-Truthing

Spindler Discovery

Clay County, Florida

Project: 5.21698

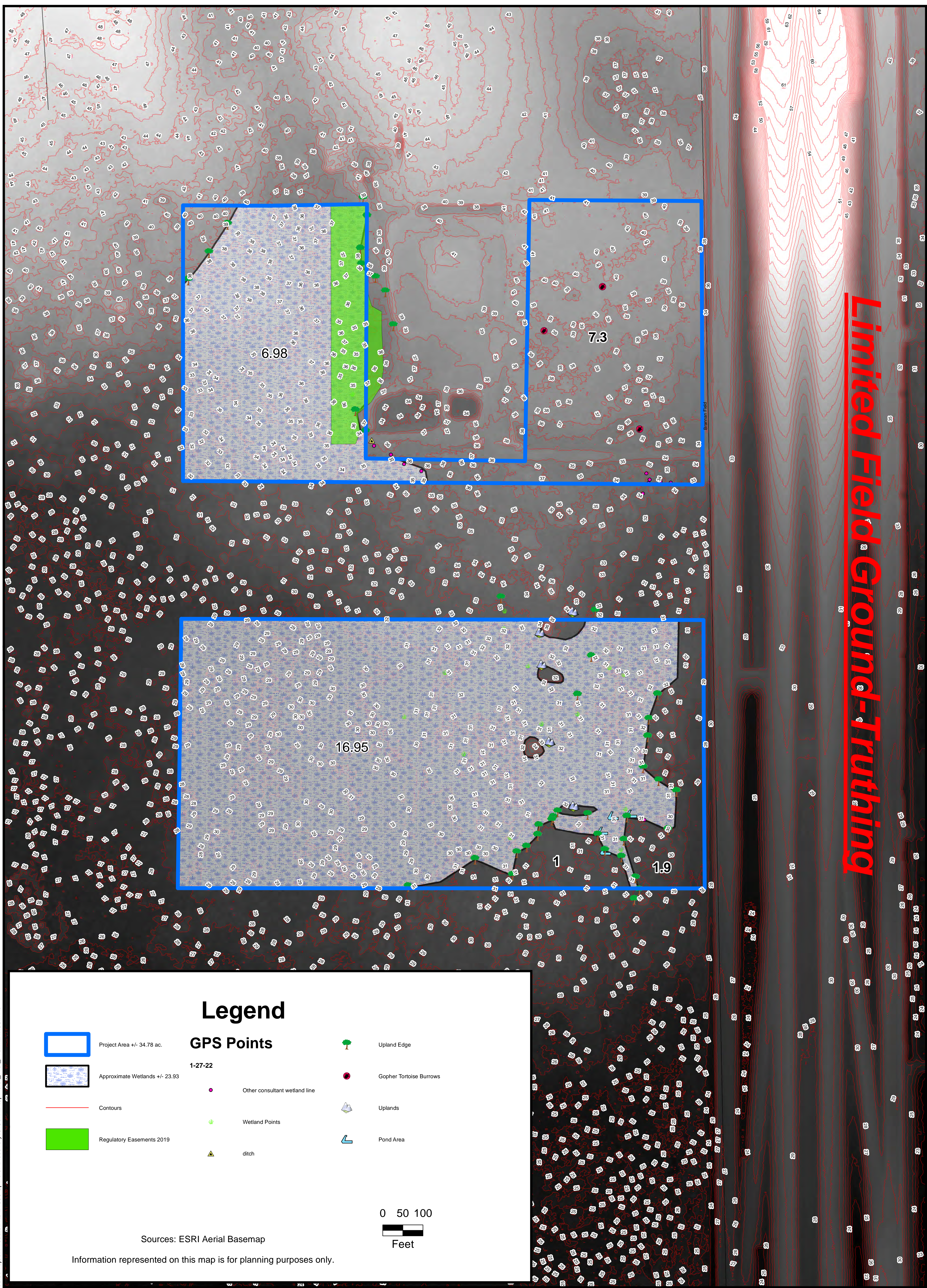
Date: Jan 29 2022

Figure: 1

F:\CES Projects\Project Files\Active\Projects\Discovery\GIS\MXD\Spindler_Wet_Prelim24x36.mxd

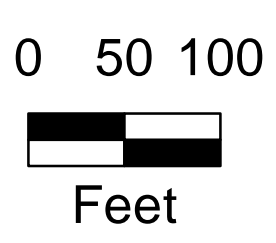
Source: Esri, Maxar, GeoEye, Earthstar Geographics, CNES/Airbus DS, USDA, USGS, AeroGRID, IGN, and the GIS User Community

F:\CES Projects\Project Files\Active\Projects\Spindler Discovery\GIS\MXD\Spindler_Vet_Prelim24x36.mxd



Legend

- Project Area +/- 34.78 ac.
- Approximate Wetlands +/- 23.93
- Contours
- Regulatory Easements 2019
- GPS Points**
1-27-22
- Other consultant wetland line
- Wetland Points
- ditch
- Upland Edge
- Gopher Tortoise Burrows
- Uplands
- Pond Area



Sources: ESRI Aerial Basemap
Information represented on this map is for planning purposes only.

CARTER ENVIRONMENTAL SERVICES, INC.

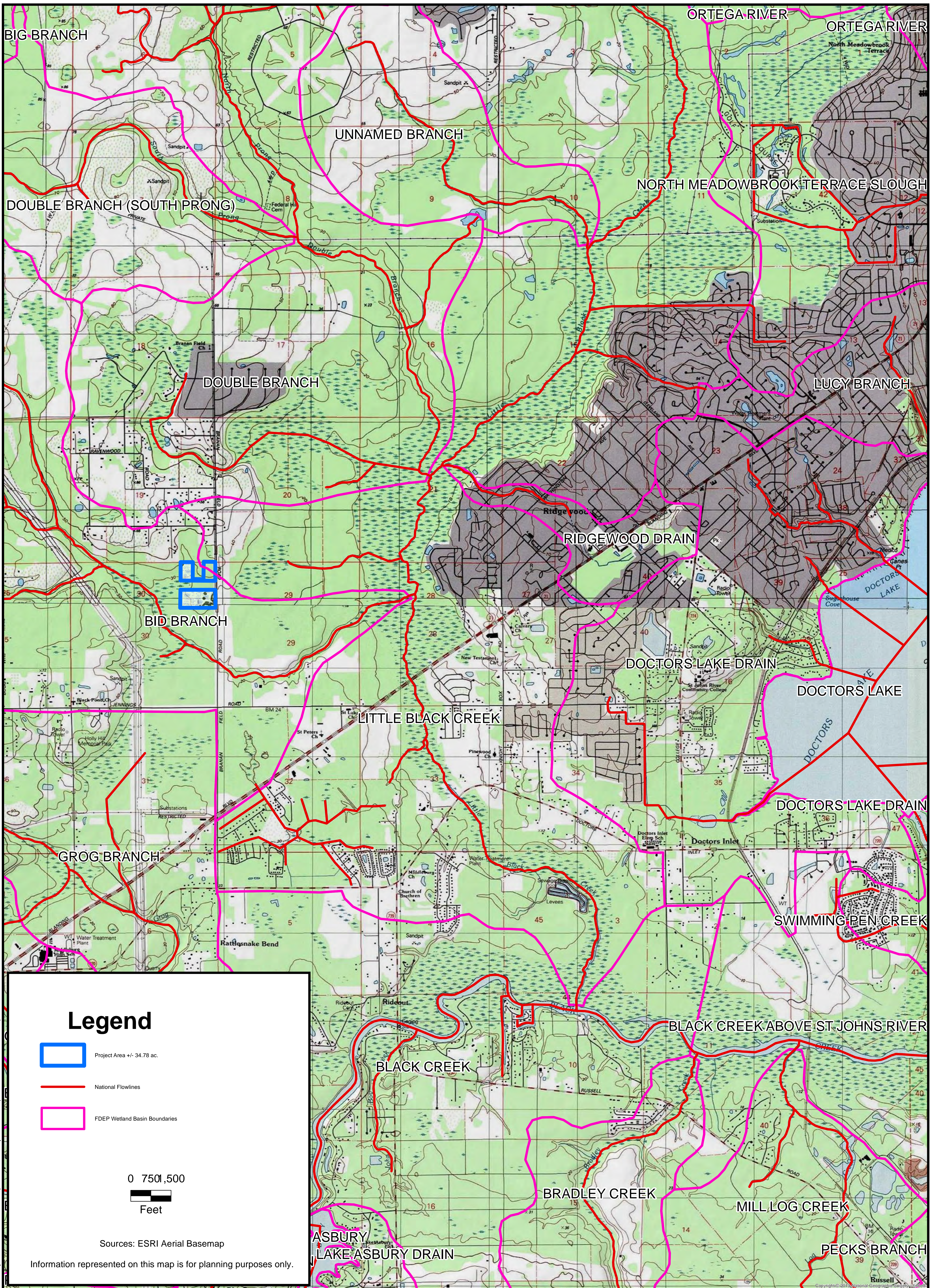


42 Masters Drive
St. Augustine, FL 32084
904-540-1786
www.carterenv.com

Preliminary Wetland Assessment with Limited Field Ground-Truthing

Spindler Discovery
Clay County, Florida

Project:	5.21698
Date:	Jan 29 2022
Figure:	2



CARTER ENVIRONMENTAL SERVICES, INC.



42 Masters Drive
St. Augustine, FL 32084
904-540-1786

www.carterenv.com

Water Basin Overview

Spindler Discovery

Clay County, Florida

Project: 5.21698

Date: Jan 29 2022

Figure: 3

F:\CES Projects\Project Files\Active\Projects\Discovery\GIS\MXD\Spindler_Wet_Prelim24x36quad.mxd