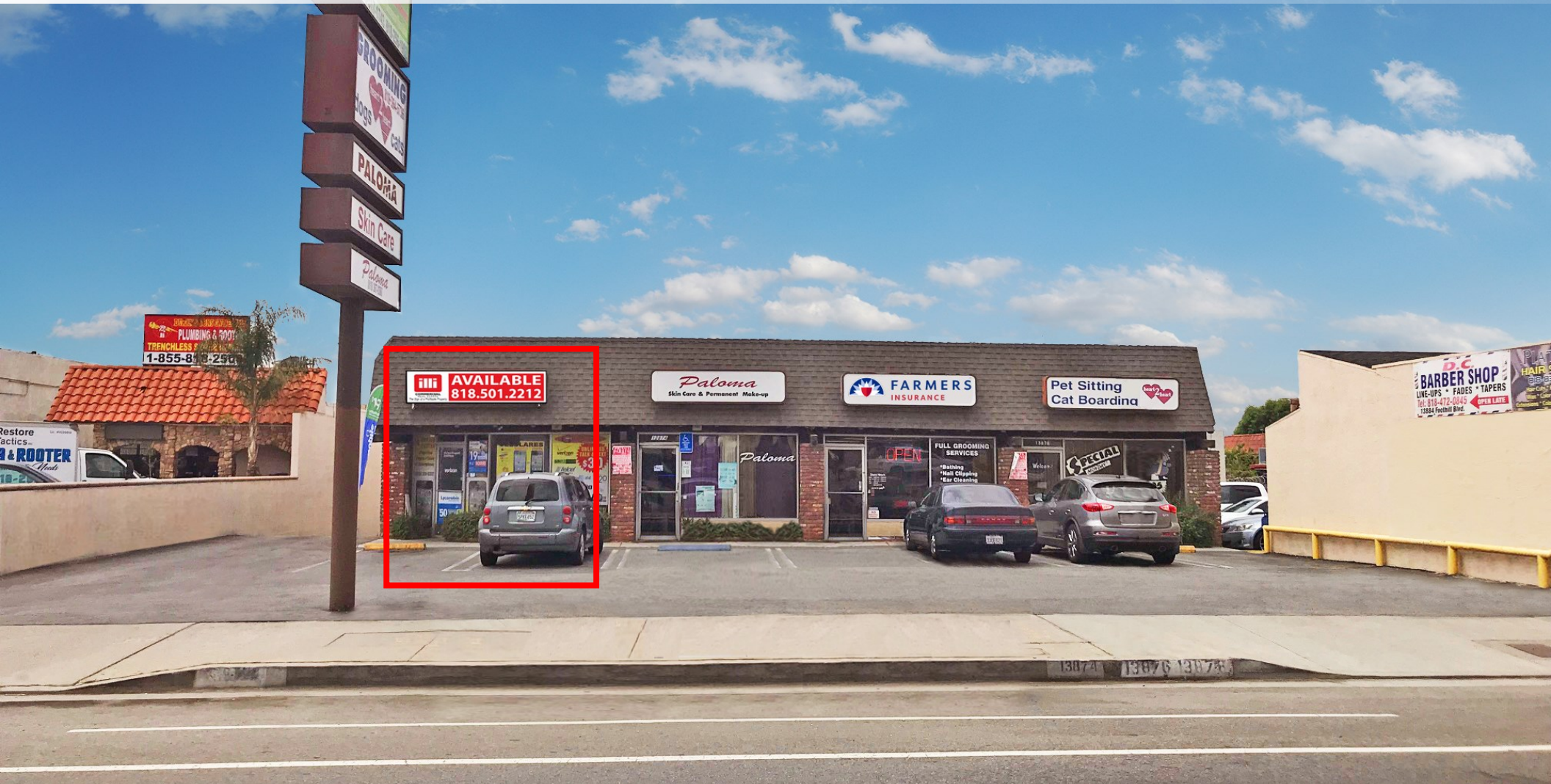


RETAIL SPACE AVAILABLE IN SYLMAR

13872-13880 Foothill Blvd, Sylmar, CA 91342



CALEB MORRISSON (818) 697-9364

caleb@illicre.com · DRE#02137816

FOLLOW US



5990 Sepulveda Blvd., Ste. 600 · Sherman Oaks CA 91411 · 818.501.2212/Phone · 818.501.2202/Fax · www.illicre.com · DRE #01834124

This information has been secured from sources we believe to be reliable, but we make no representations or warranties, expressed or implied, as to the accuracy of the information. References to square footage are approximate. References to neighboring retailers are subject to change, and may not be adjacent to the vacancy being marketed either prior to, during, or after leases are signed. Lessee must verify the information and bears all risk for any inaccuracies.

RETAIL SPACE AVAILABLE IN SYLMAR

13872-13880 Foothill Blvd, Sylmar, CA 91342

PROPERTY FEATURES

- Convenient 210 access
- Highly visible shopping center with great signage
- Onsite parking

AREA AMENITIES

- Heavy traffic on Foothill Blvd
- Next door to busy Vallarta Supermarket
- Walking distance to USA Fitness Super Center
- Other nearby major retailers include: Starbucks, US Bank, Rite Aid, AT&T, Chase Bank, Vons, Harbor Freight, Subway and Boost Mobile

AVAILABLE SPACES

- Suite 13872: Approximately 1,269 SF



DEMOS	1 Mile	3 Mile	5 Mile
Population	35,735	142,014	300,488
Avg. HH Income	\$55,300	\$660,892	\$63,656
Daytime Pop	4,682	41,974	67,656
Traffic Count	± 20,580 cars per day		

CALEB MORRISSON (818) 697-9364

caleb@illicre.com · DRE#02137816



**COMMERCIAL
REAL ESTATE**

5990 Sepulveda Blvd., Ste. 600 · Sherman Oaks CA 91411 · 818.501.2212/Phone · 818.501.2202/Fax · www.illicre.com · DRE #01834124

This information has been secured from sources we believe to be reliable, but we make no representations or warranties, expressed or implied, as to the accuracy of the information. References to square footage are approximate. References to neighboring retailers are subject to change, and may not be adjacent to the vacancy being marketed either prior to, during, or after leases are signed. Lessee must verify the information and bears all risk for any inaccuracies.

FOLLOW US



RETAIL SPACE AVAILABLE IN SYLMAR

13872-13880 Foothill Blvd, Sylmar, CA 91342

SUITE 13872: APPROXIMATELY 1,269 SF



CALEB MORRISSON (818) 697-9364

caleb@illicre.com · DRE#02137816

5990 Sepulveda Blvd., Ste. 600 · Sherman Oaks CA 91411 · 818.501.2212/Phone · 818.501.2202/Fax · www.illicre.com · DRE #01834124

This information has been secured from sources we believe to be reliable, but we make no representations or warranties, expressed or implied, as to the accuracy of the information. References to square footage are approximate. References to neighboring retailers are subject to change, and may not be adjacent to the vacancy being marketed either prior to, during, or after leases are signed. Lessee must verify the information and bears all risk for any inaccuracies.

FOLLOW US



RETAIL SPACE AVAILABLE IN SYLMAR

13872-13880 Foothill Blvd, Sylmar, CA 91342

NEARBY NATIONAL RETAILERS



CALEB MORRISSON (818) 697-9364

caleb@illicre.com · DRE#02137816



5990 Sepulveda Blvd., Ste. 600 · Sherman Oaks CA 91411 · 818.501.2212/Phone · 818.501.2202/Fax · www.illicre.com · DRE #01834124

This information has been secured from sources we believe to be reliable, but we make no representations or warranties, expressed or implied, as to the accuracy of the information. References to square footage are approximate. References to neighboring retailers are subject to change, and may not be adjacent to the vacancy being marketed either prior to, during, or after leases are signed. Lessee must verify the information and bears all risk for any inaccuracies.

FOLLOW US



RETAIL SPACE AVAILABLE IN SYLMAR

13872-13880 Foothill Blvd, Sylmar, CA 91342



COMMERCIAL
REAL ESTATE

CALEB MORRISSON (818) 697-9364

caleb@illicre.com · DRE#02137816

FOLLOW US



5990 Sepulveda Blvd., Ste. 600 · Sherman Oaks CA 91411 · 818.501.2212/Phone · 818.501.2202/Fax · www.illicre.com · DRE #01834124

This information has been secured from sources we believe to be reliable, but we make no representations or warranties, expressed or implied, as to the accuracy of the information. References to square footage are approximate. References to neighboring retailers are subject to change, and may not be adjacent to the vacancy being marketed either prior to, during, or after leases are signed. Lessee must verify the information and bears all risk for any inaccuracies.