

Airspace I

6001 National Turnpike, Louisville, KY 40214

www.cbre.com/louisville

117,490+/- SF Available



Property Highlights

- 117,490+/- square feet
- 25.53+/- acres
- BTS office area
- 14 dock doors
- 4.8 miles to UPS Worldport
- 4.9 miles to Ford LAP
- 67 parking spaces
- Zoned EZ-1
- For Lease: Contact agent for pricing

Contact Us

Kevin A. Grove, CCIM, SIOR
Executive Vice President
+1 502 412 7615
kevin.grove@cbre.com

Blake Scinta, CCIM
First Vice President
+1 502 412 7646
blake.scinta@cbre.com

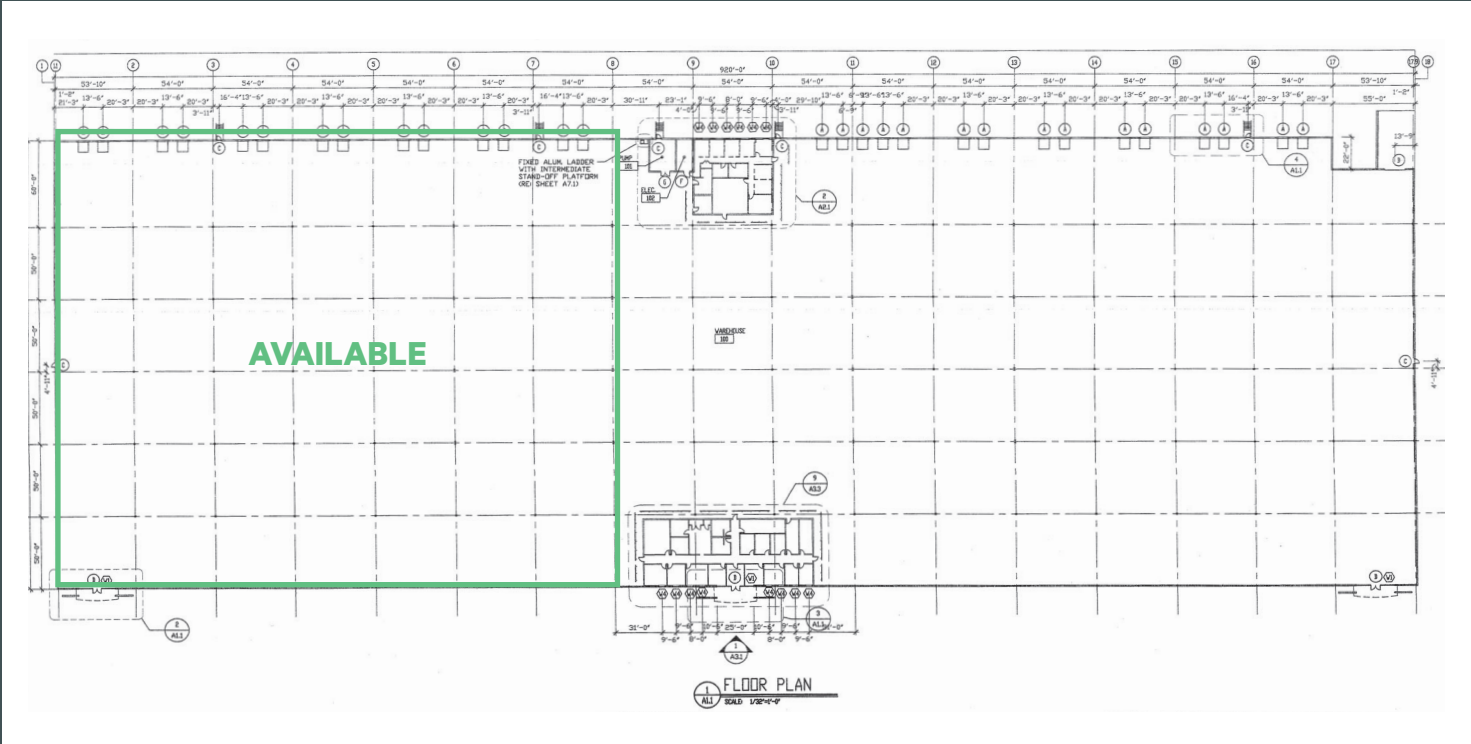
Alex P. Grove
Vice President
+1 502 412 7655
alex.grove@cbre.com

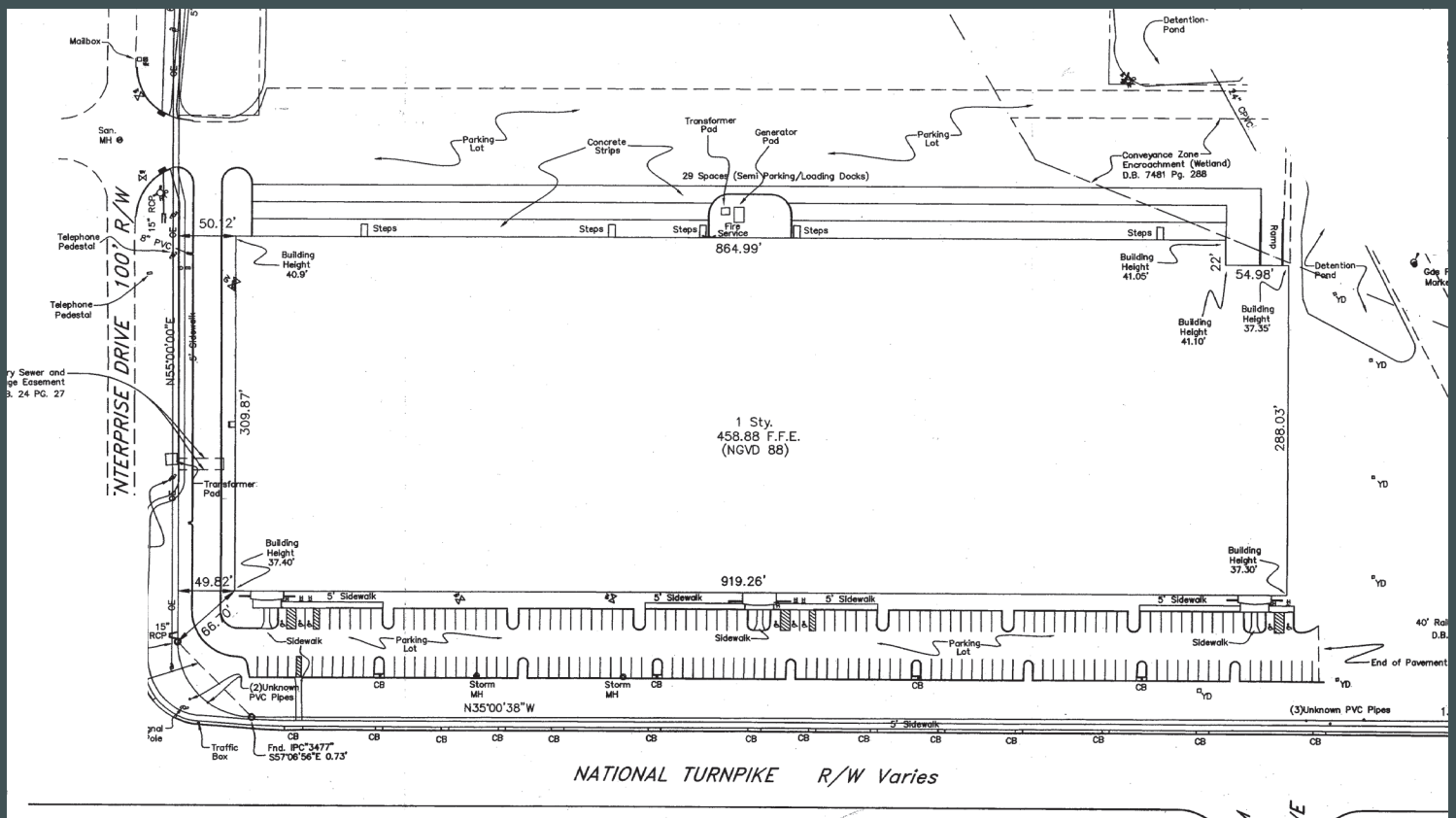
Airspace I

6001 National Turnpike, Louisville, KY

BUILDING SPECS

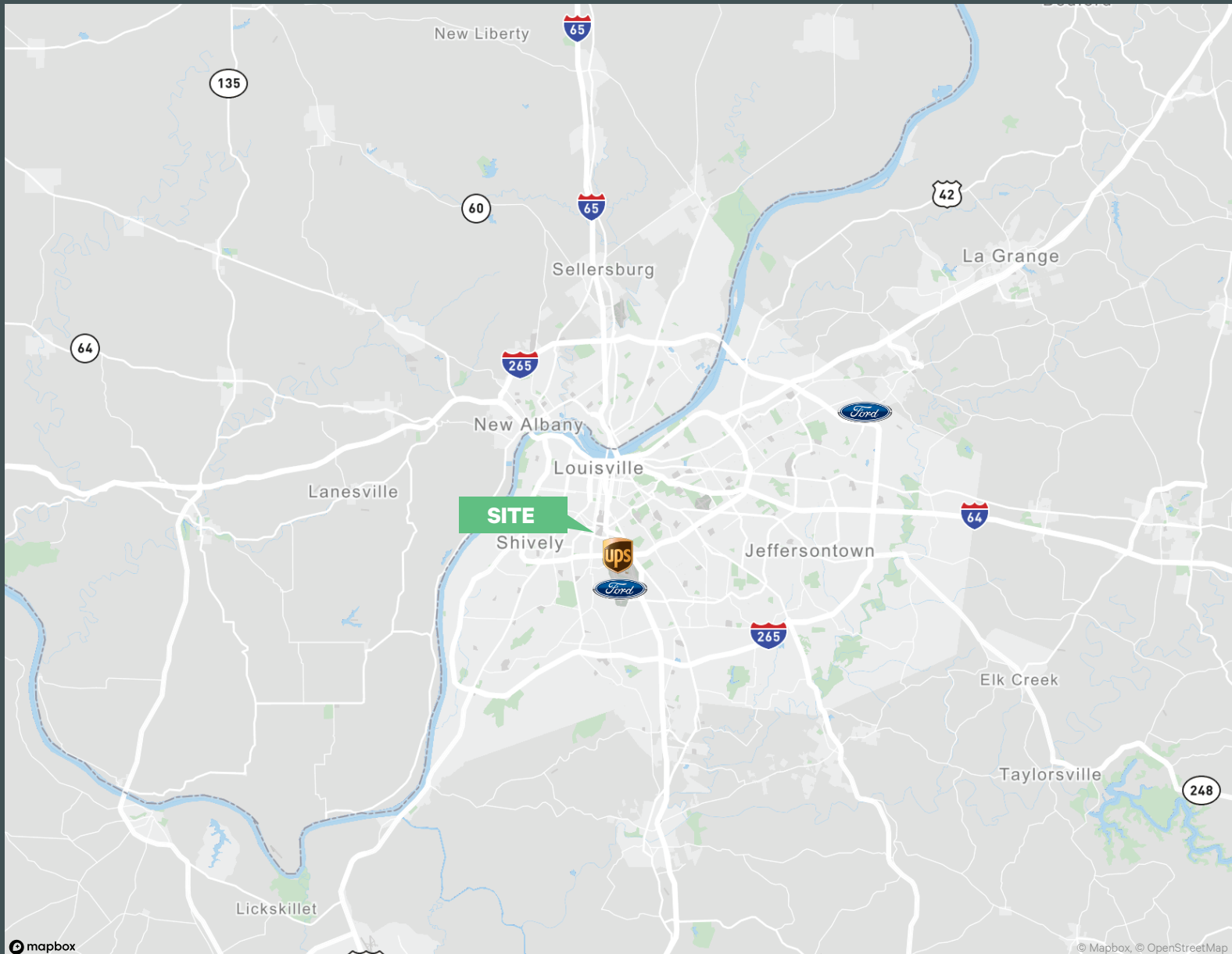
Available Space	117,490+/- SF	Roof	EPDM
Office Area	BTS	Lighting	LED
Construction Type	Concrete Tilt-Up	Car Parking	67
Clear Height	30'	HVAC System	Gas
Fire Suppression	ESFR	Jurisdiction	Jefferson County
Dock Doors	14 (9' X 10')	Zoning	EZ-1
Column Spacing	50' X 50'	Utility Providers	Natural Gas & Electric: Louisville Gas & Electric Company Water: Louisville Water Company Sewer: Metropolitan Sewer District





Airspace I

6001 National Turnpike, Louisville, KY



Contact Us

Kevin A. Grove, CCIM, SIOR

Executive Vice President
+1 502 412 7615
kevin.grove@cbre.com

Blake Scinta, CCIM

First Vice President
+1 502 412 7646
blake.scinta@cbre.com

Alex P. Grove

Vice President
+1 502 412 7655
alex.grove@cbre.com

© 2025 CBRE, Inc. All rights reserved. This information has been obtained from sources believed reliable, but has not been verified for accuracy or completeness. You should conduct a careful, independent investigation of the property and verify all information. Any reliance on this information is solely at your own risk. CBRE and the CBRE logo are service marks of CBRE, Inc. All other marks displayed on this document are the property of their respective owners, and the use of such logos does not imply any affiliation with or endorsement of CBRE. Photos herein are the property of their respective owners. Use of these images without the express written consent of the owner is prohibited.