

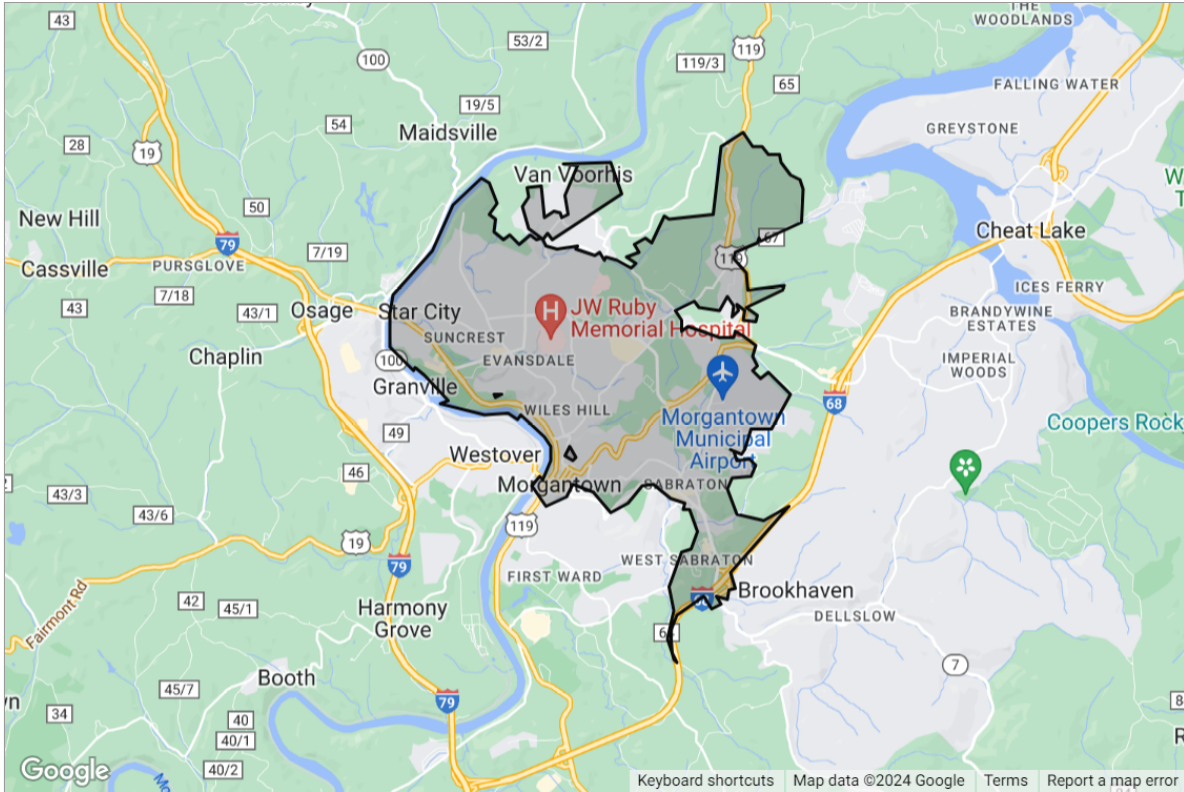


Premier Properties
By Barbara Alexander
Barbara Alexander, Broker

TRADE AREA ANALYSIS

Best Places to Find Your Customers Within

Morgantown, WV 26505



Presented by

Kay Michael Alexander | Sales Associate, ABR, Green, GRI, Hanna Luxury

GRI, ABR, GRN

West Virginia Real Estate License: WV0017400



Premier Properties
By Barbara Alexander
Barbara Alexander, Broker

Mobile: (304) 282-0077 | Office: (304) 594-0115 | Fax: (304) 594-0118

Main: kalexander@howardhanna.com

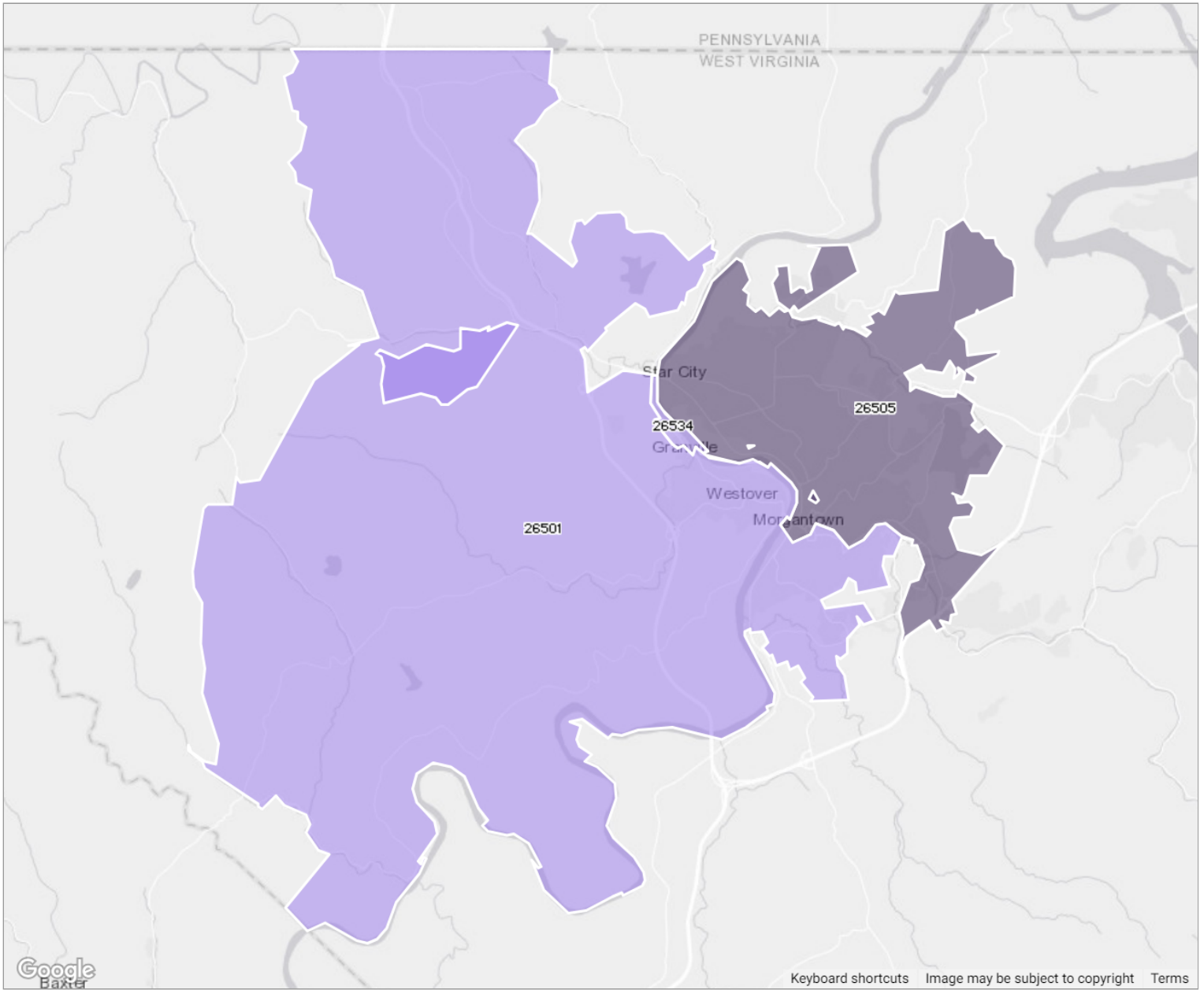
Office: www.move2wv.com | Office: www.morgantownrealestate.com

Howard Hanna Premier Properties by Barbara Alexander

2800 Cranberry Square
Morgantown, WV 26508

Area Searched: Morgantown, WV 26505

RPR searched within your subject area for the places that are the best matches based on the criteria you selected below.



No Match Better Best

Criteria Used for Analysis




Total Population

60,537

Ranking of Search Results

This grid ranks your analysis results. The trade areas with the best matches to your criteria are shown first. The results include the name of the trade area and how the area scored for each of the selected criteria.



Rank	ZIP Codes	Population Density <i>Count</i>	Total Population <i>Count</i>
	Morgantown, WV 26505	3,191.3	40,841
	Granville, WV 26534	2,473.5	322
	Morgantown, WV 26501	329.1	19,374

Analysis Criteria Information

Population Density *Count*

2023 Population Density

Data Source: U.S. Census American Community Survey via Esri, 2023

Update Frequency: Annually

Total Population *Count*

2023 Total Population

Data Source: U.S. Census American Community Survey via Esri, 2023

Update Frequency: Annually

About RPR (Realtors Property Resource)

- Realtors Property Resource® is a wholly owned subsidiary of the National Association REALTORS®.
- RPR offers comprehensive data – including a nationwide database of 164 million properties – as well as powerful analytics and dynamic reports exclusively for members of the NAR.
- RPR's focus is giving residential and commercial real estate practitioners, brokers, and MLS and Association staff the tools they need to serve their clients.
- This report has been provided to you by a member of the NAR.



About RPR's Data

RPR generates and compiles real estate and other data from a vast array of sources. The data contained in your report includes some or all of the following:

- **Listing data** from our partner MLSs and CIEs, and related calculations, like estimated value for a property or median sales price for a local market.
- **Public records data** including tax, assessment, and deed information. Foreclosure and distressed data from public records.
- **Market conditions and forecasts** based on listing and public records data.
- **Census and employment data** from the U.S. Census and the U.S. Bureau of Labor Statistics.
- **Demographics and trends data** from Esri. The data in commercial and economic reports includes Tapestry Segmentation, which classifies U.S. residential neighborhoods into unique market segments based on socioeconomic and demographic characteristics.
- **Business data** including consumer expenditures, commercial market potential, retail marketplace, SIC and NAICS business information, and banking potential data from Esri.
- **School data and reviews** from Niche.
- **Specialty data sets** such as walkability scores, traffic counts and flood zones.



Update Frequency

- Listings and public records data are updated on a continuous basis.
- Charts and statistics calculated from listing and public records data are refreshed monthly.
- Other data sets range from daily to annual updates.

Learn more

For more information about RPR, please visit RPR's public website: <https://blog.narrpr.com>



Barristers Title and Escrow

BARRISTERS

— A Howard Hanna Company —

barristersofpa-all@howardhanna.com

Work:(412) 967-9300

Fax:(412) 967-0805

**1000 Gamma Drive
Pittsburgh, PA 15238**

www.howardhanna.com/barristers

Barristers Title and Escrow is a national leader in title insurance, and in the intricacies of the home buying and selling experience.

Howard Hanna Insurance Services



Insurance Services

insurance@howardhanna.com

Work:(412) 967-9000

Fax:(412) 696-0298

**1000 Gamma Drive
Pittsburgh, PA 15238**

www.howardhanna.com/insurance

Howard Hanna Insurance Services is ranked the #1 real estate insurance company in the country.

Howard Hanna Mortgage Services



Mortgage Services

mortgage@howardhanna.com

Work:(412) 967-9001

Fax:(412) 963-6994

**1000 Gamma Drive
Pittsburgh, PA 15238**

www.howardhannamortgage.com

Howard Hanna Mortgage Services is ranked one of the top four real estate mortgage companies in the country.

NOTE: This communication is provided to you for informational purposes only and should not be relied upon by you. The real estate firm identified on this report is not a mortgage lender and so you should contact the mortgage company identified above directly to learn more about its mortgage products and your eligibility for such products.