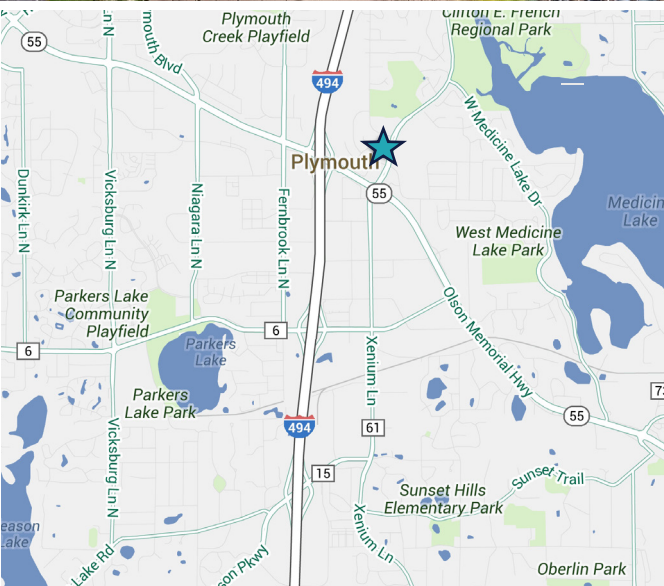




NORTHWEST BUSINESS CAMPUS I

2905 NORTHWEST BLVD
PLYMOUTH, MN



VACANCY DETAILS

SUITE 20	17,748 SF Total (available in +/- 90 days) Existing lab/tech space 2 drive-ins
SUITE 125	9,316 SF Total BTS Office 1 Drive-In Existing fitness center and locker rooms
SUITE 215	5,476 SF Total 100% office (BTS warehouse)
2025 EST. RE TAX & OP	\$8.08 PSF
LEASE RATES	Negotiable

PROPERTY DETAILS

TOTAL BUILDING SF	84,765 SF
LAND AREA	9.40 acres
CLEAR HEIGHT	12'
YEAR BUILT	1985
PARKING	344 (3.9/1,000) with potential to add more stalls
FREEWAY ACCESS	Access to Hwy 55 via Northwest Blvd

TOM BENNETT
+1 952 924 4897
tom.bennett@cbre.com

TOM HAYHOE
+1 952 924 4804
tom.hayhoe@cbre.com

PARKER RICKERT
+1 612 845 8022
parker.rickert@cbre.com





NORTHWEST BUSINESS CAMPUS I

2905 NORTHWEST BLVD, PLYMOUTH, MN

PROPERTY FEATURES

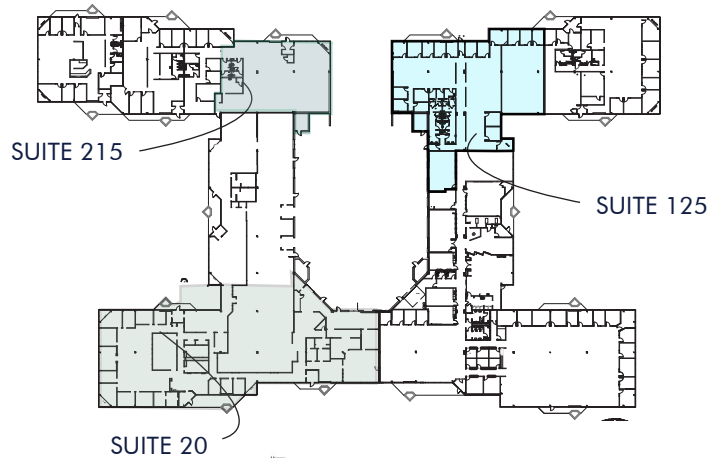
Recently completed vacancy prep!

Class A office finishes

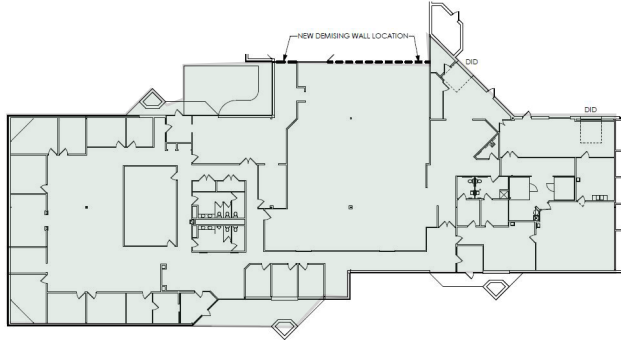
Space includes existing fitness center and locker-room/
showers!

Plug-And-Play Opportunity

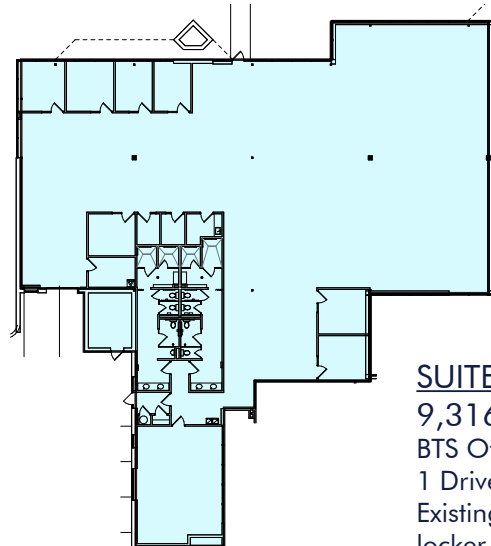
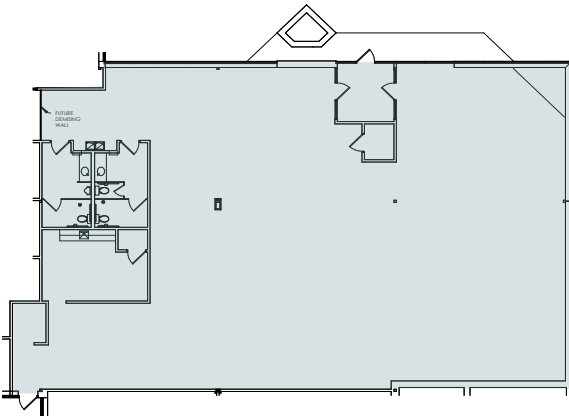
Located in close proximity to a multitude of retail,
medical, office, restaurant, and hotel accommodations



SUITE 20
17,748 SF Total
Existing lab/tech
space
2 drive-ins



SUITE 215
5,476 SF Total
100% office (BTS warehouse)



SUITE 125
9,316 SF Total
BTS Office
1 Drive-in
Existing fitness center and
locker rooms

TOM BENNETT
+1 952 924 4897
tom.bennett@cbre.com

TOM HAYHOE
+1 952 924 4804
tom.hayhoe@cbre.com

PARKER RICKERT
+1 612 845 8022
parker.rickert@cbre.com



© 2025 CBRE, Inc. All rights reserved. This information has been obtained from sources believed reliable, but has not been verified for accuracy or completeness. You should conduct a careful, independent investigation of the property and verify all information. Any reliance on this information is solely at your own risk. CBRE and the CBRE logo are service marks of CBRE, Inc. All other marks displayed on this document are the property of their respective owners, and the use of such logos does not imply any affiliation with or endorsement of CBRE. Photos herein are the property of their respective owners. Use of these images without the express written consent of the owner is prohibited.