

# LAND AVAILABLE

10730 Hubler Drive - Taylorsville, IN 47280



MIDLAND ATLANTIC  
PROPERTIES



## PROPERTY OVERVIEW

Land adjacent to Hubler Honda automotive dealership.

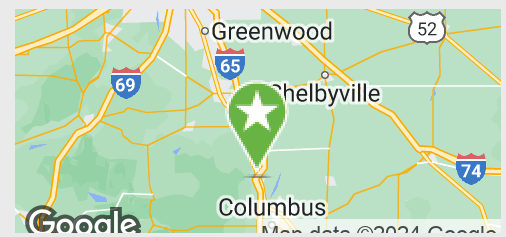
## PROPERTY HIGHLIGHTS

- +/- 7 Acres
- Located at the I-65 and US Highway 31 Edinburgh Exit, Just South of the Edinburgh Outlet Mall
- Zoned CR (Commercial Regional)
- Utilities, Drainage/Retention Systems and Access Road in Place

DEMOGRAPHICS	3 MILE	5 MILES
Total Population	6,423	16,823
Average HH Income	\$84,125	\$92,650
Businesses	212	575
Employees	2,763	7,235

## TRAFFIC COUNTS

US Highway 31	24,726
Interstate 65	51,356



## MIDLAND ATLANTIC PROPERTIES

Indianapolis Office  
3801 East 82nd Street, Suite B  
Indianapolis, IN 46240

MIDLANDATLANTIC.COM

## PATRICK BOYLE

Direct: 317.597.1718  
Cell: 317.679.6322  
pjboyle@midlandatlantic.us

## TRACEY HOLTZMAN

Direct: 317.597.1717  
Cell: 317.410.6727  
tholtzman@midlandatlantic.us

DEVELOPMENT • BROKERAGE • ACQUISITIONS • MANAGEMENT

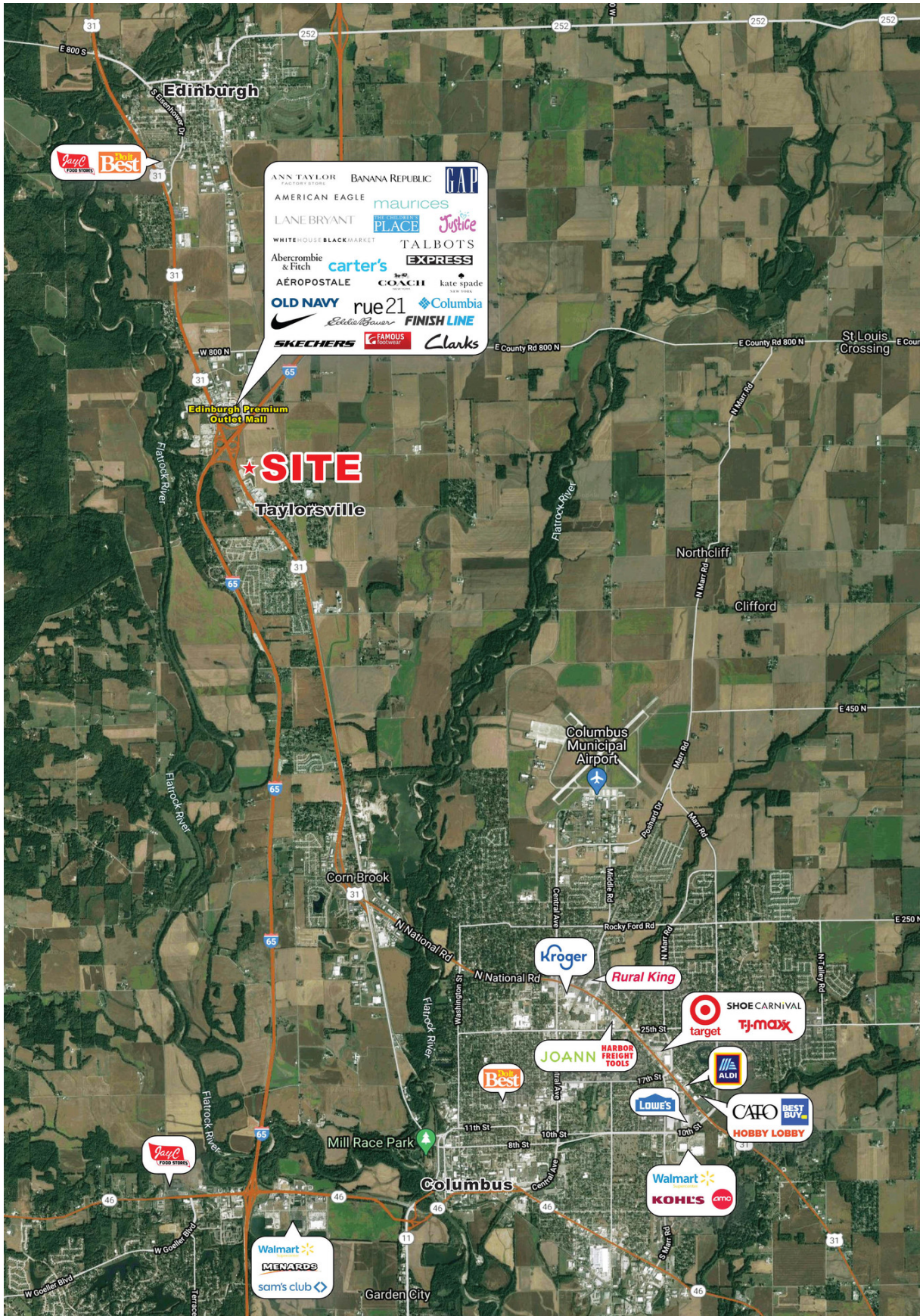
Information contained herein has been obtained from sources deemed reliable but is not guaranteed and is subject to change without notice.

# LAND AVAILABLE

10730 Hubler Drive - Taylorsville, IN 47280



MIDLAND ATLANTIC  
PROPERTIES

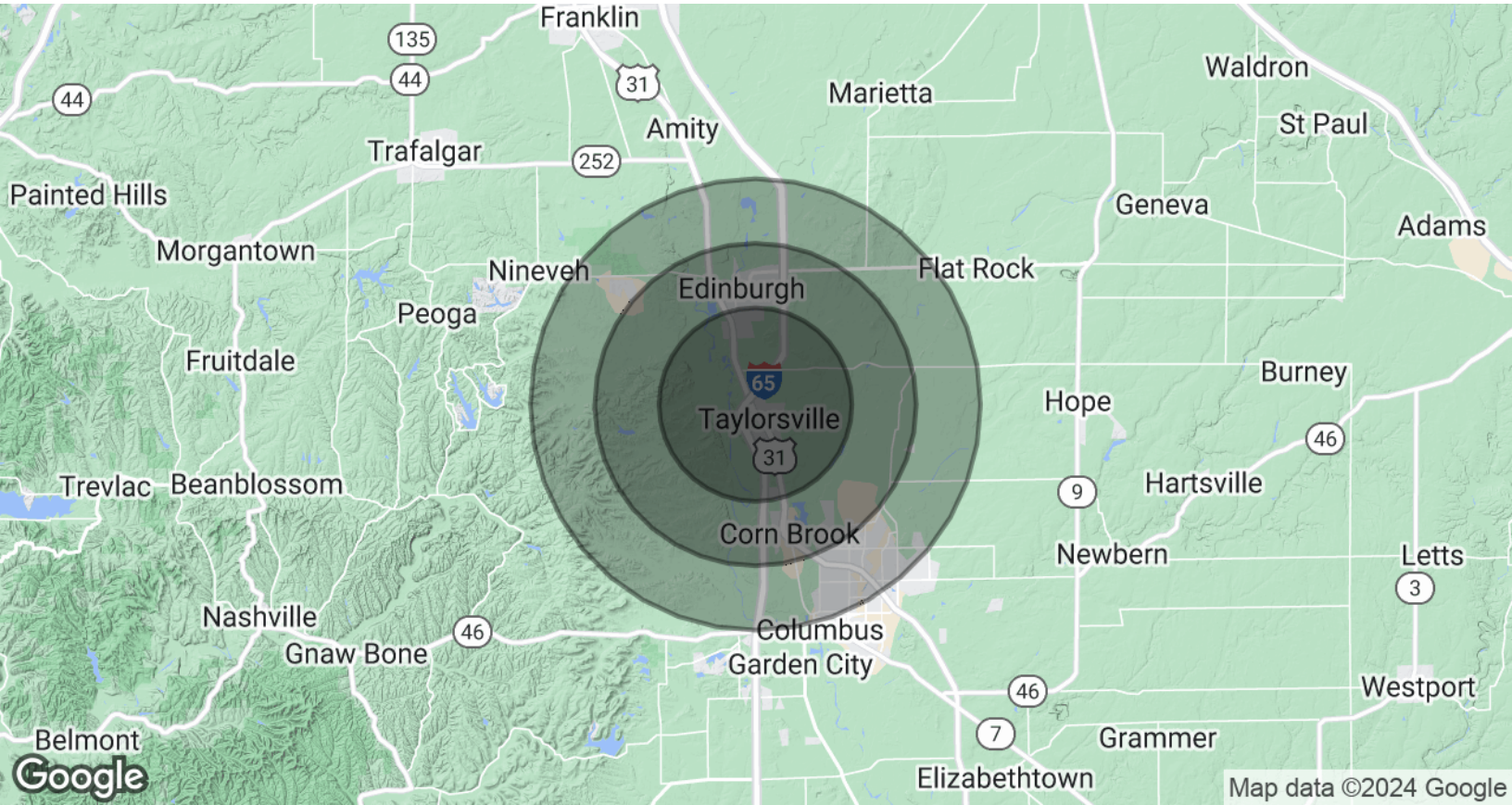


# LAND AVAILABLE

10730 Hubler Drive - Taylorsville, IN 47280



MIDLAND ATLANTIC  
PROPERTIES



## POPULATION & HOUSING

	3 MILES	5 MILES	7 MILES
Total Population	6,423	16,823	40,716
Projected Annual Growth (2023-2028)	1.1%	1.0%	0.8%
Total Households	2,441	6,502	16,218
Median Home Value	\$122,187	\$176,335	\$202,025

## INCOME & BUSINESS

	3 MILES	5 MILES	7 MILES
Average HH income	\$84,125	\$92,650	\$98,361
Daytime Population (16+ years)	4,208	11,173	27,879
Total Businesses	212	575	1,598
Total Employees	2,763	7,235	17,070

### MIDLAND ATLANTIC PROPERTIES

Indianapolis Office  
3801 East 82nd Street, Suite B  
Indianapolis, IN 46240

### PATRICK BOYLE

Direct: 317.597.1718  
Cell: 317.679.6322  
pjboyle@midlandatlantic.us

### TRACEY HOLTZMAN

Direct: 317.597.1717  
Cell: 317.410.6727  
tholtzman@midlandatlantic.us

MIDLANDATLANTIC.COM

DEVELOPMENT • BROKERAGE • ACQUISITIONS • MANAGEMENT

Information contained herein has been obtained from sources deemed reliable but is not guaranteed and is subject to change without notice.