



Officescape At Sawmill

4618 Sawmill Rd, Columbus, Ohio 43220

Property Features

- Well Maintained Office Condo
- Ideal for Both General & Medical Office Users
- Great Owner/User Opportunity
- 2,400 SF
- Welcoming Reception/Waiting Area
- Conference Room
- Three Offices/Exams
- Kitchenette & Two Restrooms
- Stone, Stucco and Glass Single-Story End-Unit
- Prime Location on Sawmill Rd Near Henderson
- Numerous Amenities Nearby
- Easy Access to SR-33, Rt-315, and I-270
- Monthly Condo Fee | \$500

Sale Price: \$395,000



For more information:

Philip Bird, SIOR

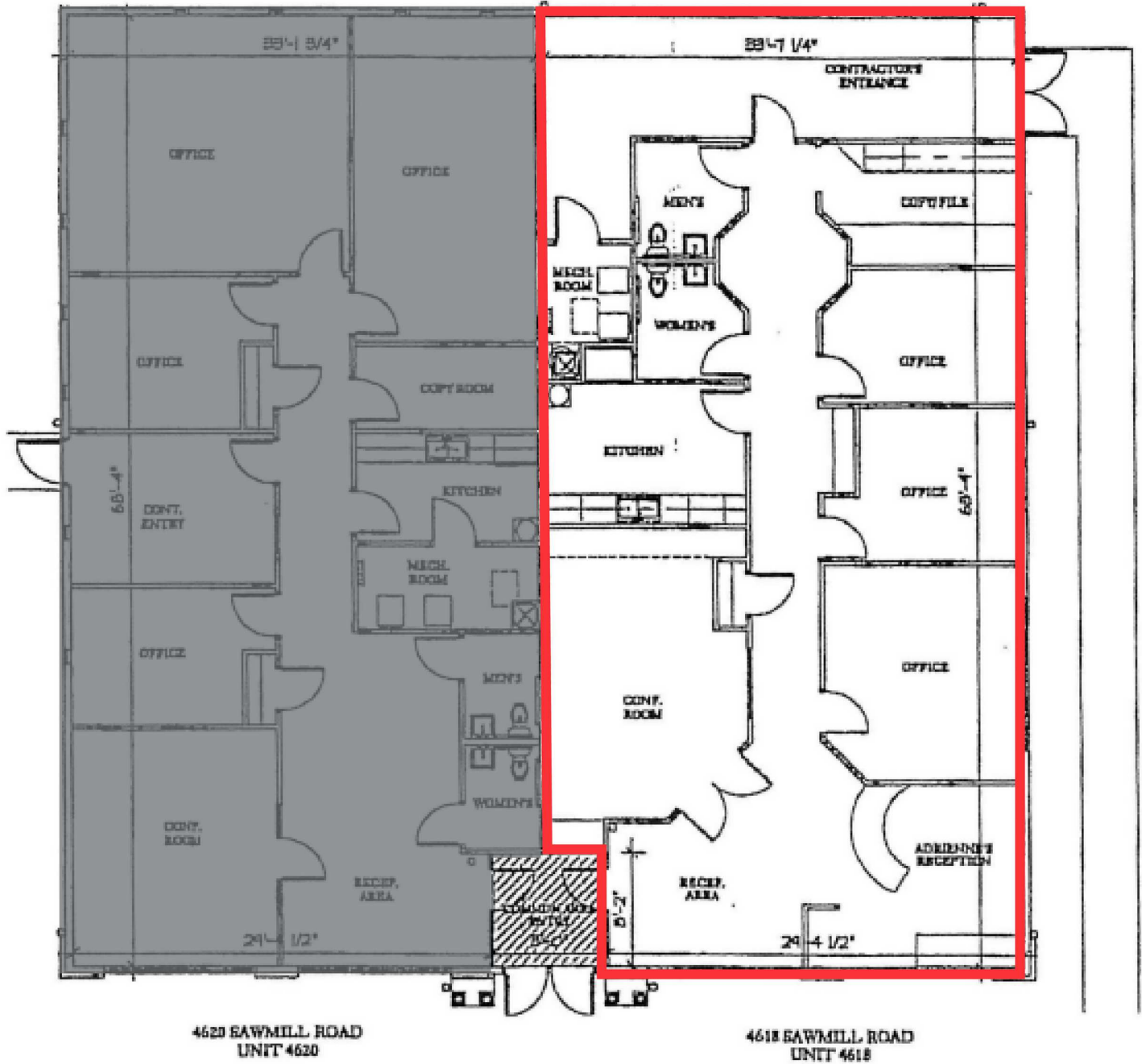
614 629 5296 • pbird@ohioequities.com

Mitchell Moore

614 629 5257 • mmoore@ohioequities.com

Matt Gregory, SIOR, CCIM

614 629 5234 • mgregory@ohioequities.com



4620 SAWMILL ROAD
UNIT 4620

4618 SAWMILL ROAD
UNIT 4618

 LIMITED COMMON ELEMENT FOR UNITS 4620 & 4618

