

FOR LEASE

245 Locust Street



COLUMBIA, PA 17512

PRIME RETAIL IN COLUMBIA PA

ALL FIXTURES & COMMERCIAL FOOD  
EQUIPMENT INCLUDED IN LEASE

BESIDE HINKLES RESTAURANT &  
MURPHY'S MERCANTILE

TURN-KEY



ALTHEA RAMSAY CARRIGAN  
717.669.8861  
aramsay@high.net

HIGH ASSOCIATES LTD. • 1853 WILLIAM PENN WAY • LANCASTER, PA 17601 • 717.293.4477 • HIGHASSOCIATES.COM

Information furnished regarding property for sale or rent is from sources deemed reliable but is not guaranteed. No warranty or representation is made as to accuracy thereof and is submitted subject to errors, omissions, change of price, or other conditions, prior sale or lease or withdrawal without notice. No liability of any kind is to be imposed on the broker herein.



FOR LEASE

# 245 Locust Street



## LEASE INFORMATION

Available SF:	1,850 SF
Lease Rate:	\$18.00 SF/yr
County:	Lancaster
Municipality:	Columbia Boro

## PROPERTY OVERVIEW

Absolutely Beautiful retail bakery space in Columbia beside and attached to Murphy's Mercantile and Hinkle's Restaurant. All fixtures and commercial food equipment included in the Lease. Decorate 1/2 of the beautiful display window and the utilize the outdoor seating, bonus signage and indoor events area. Storage too! A built-in customer base with the store next door and more above. This is a rare opportunity! \$18.00 Gross plus utilities and internet, turn-key!

## OFFERING SUMMARY

HVAC:	Natural Gas	Lighting:	Florescent light
Parking:	Street	Signage:	Yes
Water:	Public	Traffic Counts:	Approx. 10K-13K ADT
Sewer:	Public		
Zoning:	Natural Gas		
Electric/Gas:	Natural Gas		

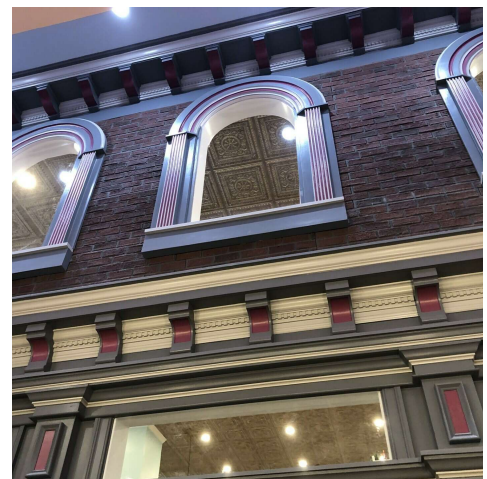
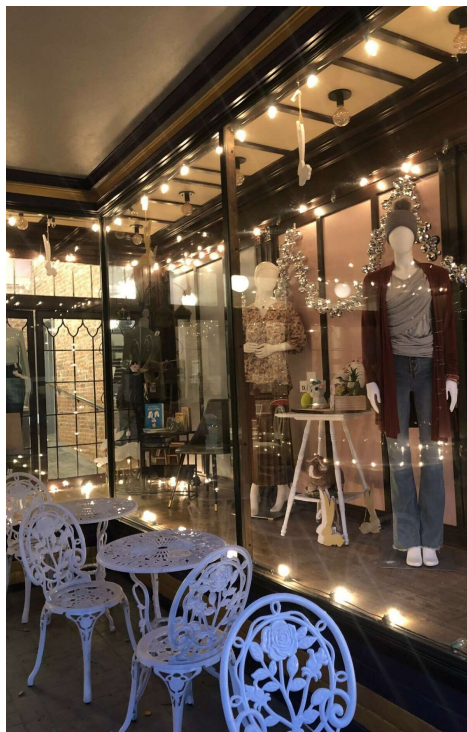
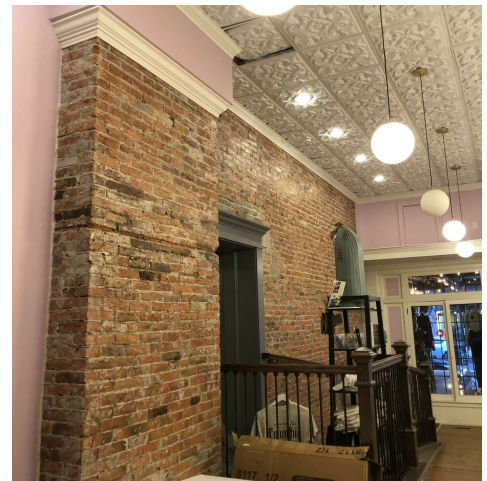
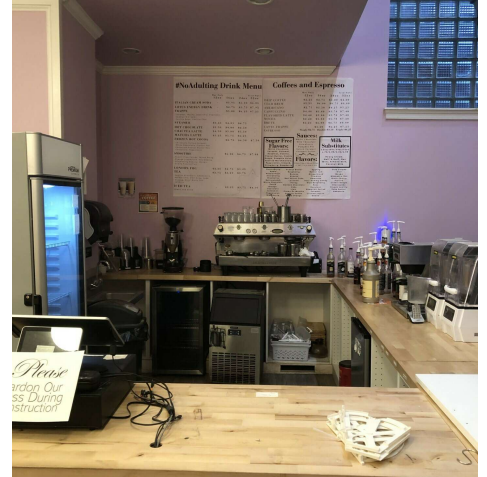


**ALTHEA RAMSAY CARRIGAN**  
717.669.8861  
aramsay@high.net

FOR LEASE

245 Locust Street

**HIGH ASSOCIATES** LTD.  
An Affiliate of High Real Estate Group LLC



ALTHEA RAMSAY CARRIGAN

717.669.8861

aramsay@high.net

HIGH ASSOCIATES LTD. • 1853 WILLIAM PENN WAY • LANCASTER, PA 17601 • 717.293.4477 • HIGHASSOCIATES.COM

FOR LEASE

245 Locust Street

**HIGH ASSOCIATES** LTD.  
An Affiliate of High Real Estate Group LLC



ALTHEA RAMSAY CARRIGAN

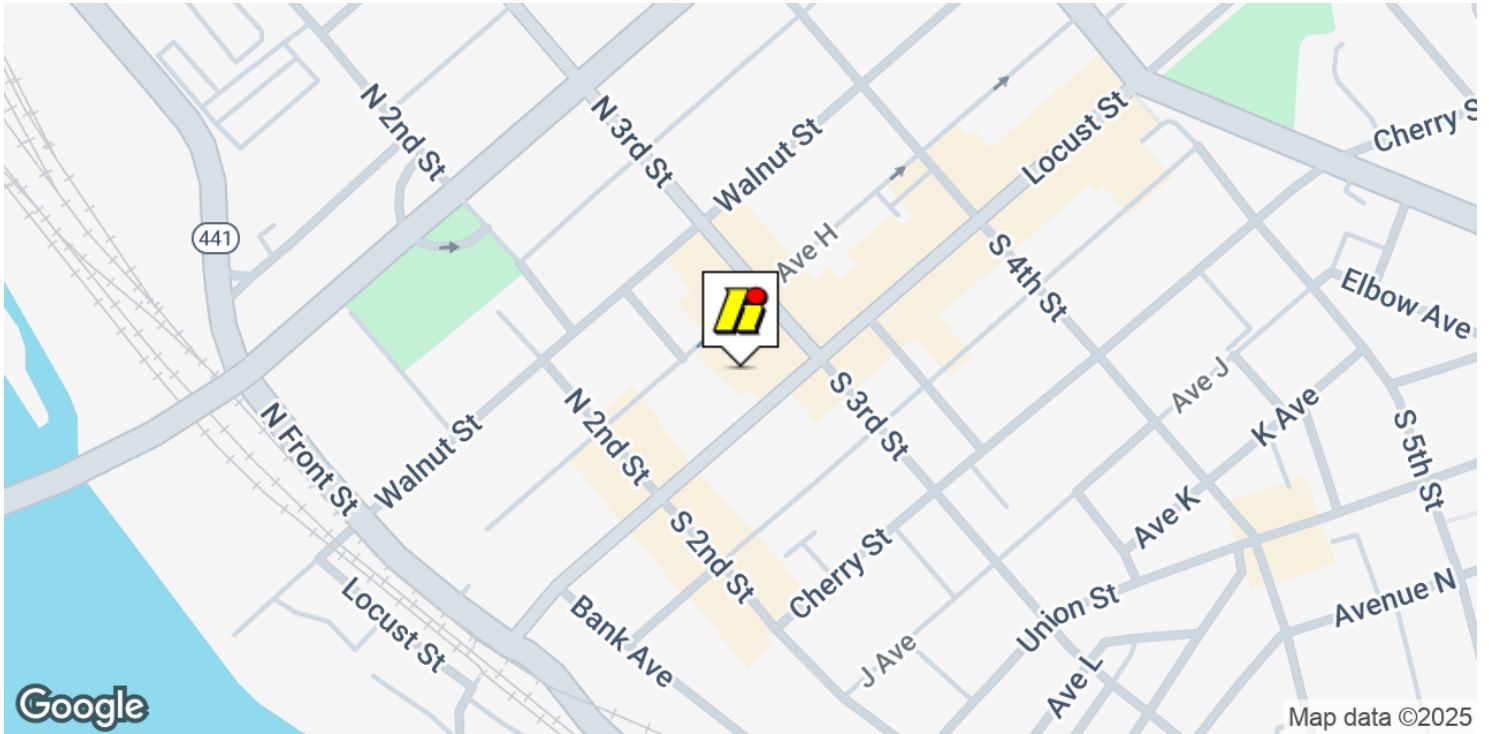
717.669.8861

aramsay@high.net

HIGH ASSOCIATES LTD. • 1853 WILLIAM PENN WAY • LANCASTER, PA 17601 • 717.293.4477 • HIGHASSOCIATES.COM

FOR LEASE

# 245 Locust Street



ALTHEA RAMSAY CARRIGAN

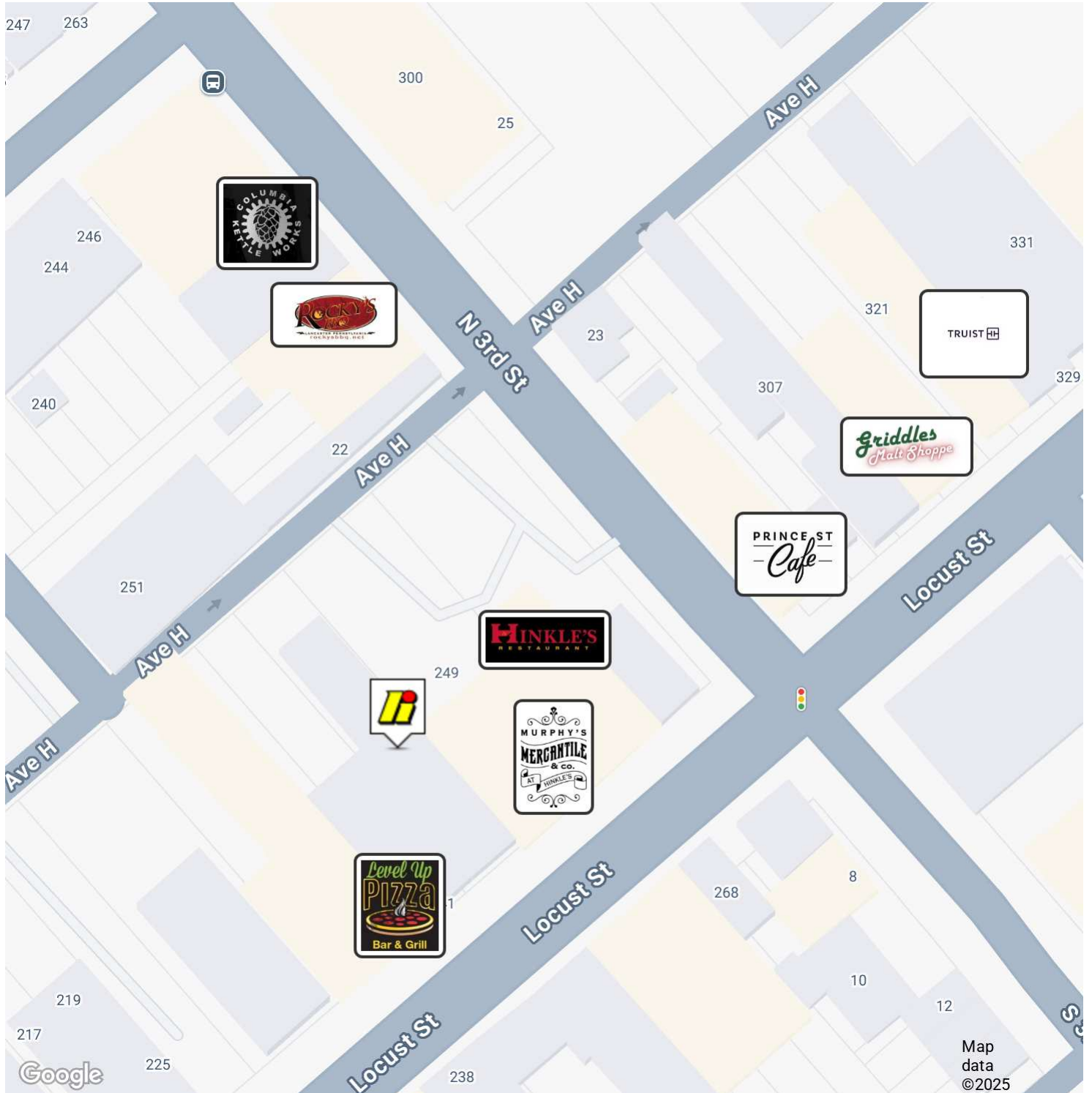
717.669.8861

aramsay@high.net

HIGH ASSOCIATES LTD. • 1853 WILLIAM PENN WAY • LANCASTER, PA 17601 • 717.293.4477 • HIGHASSOCIATES.COM

FOR LEASE

# 245 Locust Street



ALTHEA RAMSAY CARRIGAN

717.669.8861

aramsay@high.net

HIGH ASSOCIATES LTD. • 1853 WILLIAM PENN WAY • LANCASTER, PA 17601 • 717.293.4477 • HIGHASSOCIATES.COM

FOR LEASE

# 245 Locust Street



POPULATION	1 MILE	3 MILES	5 MILES
Total Population	9,479	23,402	49,745
Average Age	41	42	41
Average Age (Male)	40	40	40
Average Age (Female)	42	43	42
HOUSEHOLDS & INCOME	1 MILE	3 MILES	5 MILES
Total Households	4,027	9,568	19,697
# of Persons per HH	2.4	2.4	2.5
Average HH Income	\$65,810	\$83,530	\$98,051
Average House Value	\$213,788	\$275,743	\$307,857

Demographics data derived from AlphaMap

ALTHEA RAMSAY CARRIGAN

717.669.8861

aramsay@high.net

FOR LEASE

245 Locust Street



*An Affiliate of High Real Estate Group LLC*

*Every Company dreams its dreams and sets its standards  
These are ours . . .*

***We are committed to two great tasks:***

**1. BUILDING TRUSTWORTHY RELATIONSHIPS.**

- Valuing our customers and meeting their needs.
- Respecting the dignity of all co-workers and their families.
- Energizing our teamwork with participative management.
- Recognizing and rewarding the accomplishments of our co-workers.
- Strengthening our partnership with suppliers.
- Contributing to a world of beauty and prosperity and peace.

**2. BEING INNOVATIVE LEADERS.**

- Creating an environment for innovation since 1931.
- "Right the first time" - High quality products and services.
- Investing profits to secure our future.

**WE GIVE GOOD MEASURE.**

1853 WILLIAM PENN WAY  
Lancaster, PA 17601  
717.293.4477

5000 RITTER ROAD SUITE 201  
Mechanicsburg, PA 17055  
717.697.2422