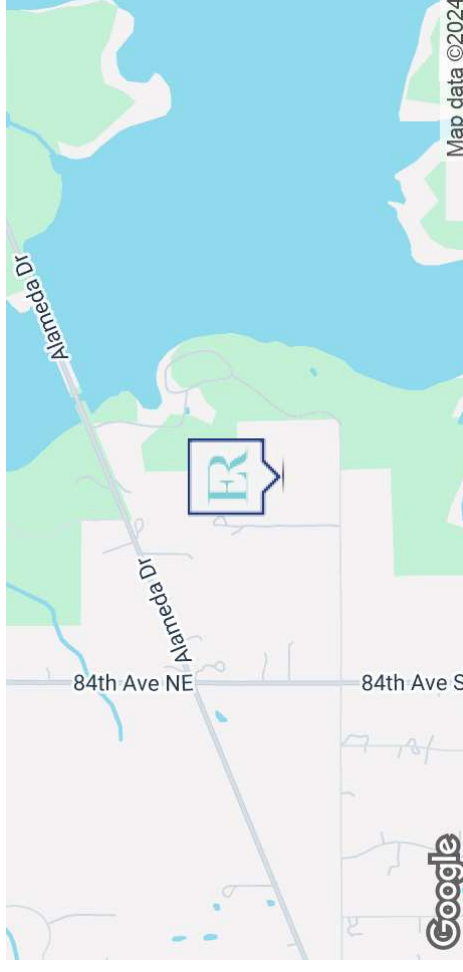


A LAND INVESTMENT OPPORTUNITY

SPORTSMAN PARK DEVELOPMENT

0 REDBUD DR, NORMAN, OK 73026



OFFERING SUMMARY

Sale Price:	\$799,000
Lot Size:	25.52 Acres
Zoning:	Residential
Market:	Norman
Submarket:	Oklahoma City
Price / SF:	\$0.72

PROPERTY OVERVIEW

Sportsman Park Development is ideally situated for future residents who will enjoy easy access to dining and shopping at nearby local hotspots like Campus Corner and the historic Downtown area. Nature enthusiasts will enjoy the abundance of outdoor leisure opportunities at Lake Thunderbird State Park. With its combination of urban conveniences and natural beauty, Norman presents an appealing prospect for land and residential investors seeking a location with endless potential.

PROPERTY HIGHLIGHTS

- Total acreage 25.52 Platted
- 18 residential lots at Lake Thunderbird
- Average lot size 1.40 acres
- City streets engineering & approved by the City of Norman.

KARINA BALSCHUWEIT

Equity Commercial Realty Advisors, LLC
karinab@equityrealty.net

(405) 412-9253 cell
(405) 640-6167 office

A LAND INVESTMENT OPPORTUNITY
SPORTSMAN PARK DEVELOPMENT
0 REDBUD DR, NORMAN, OK 73026



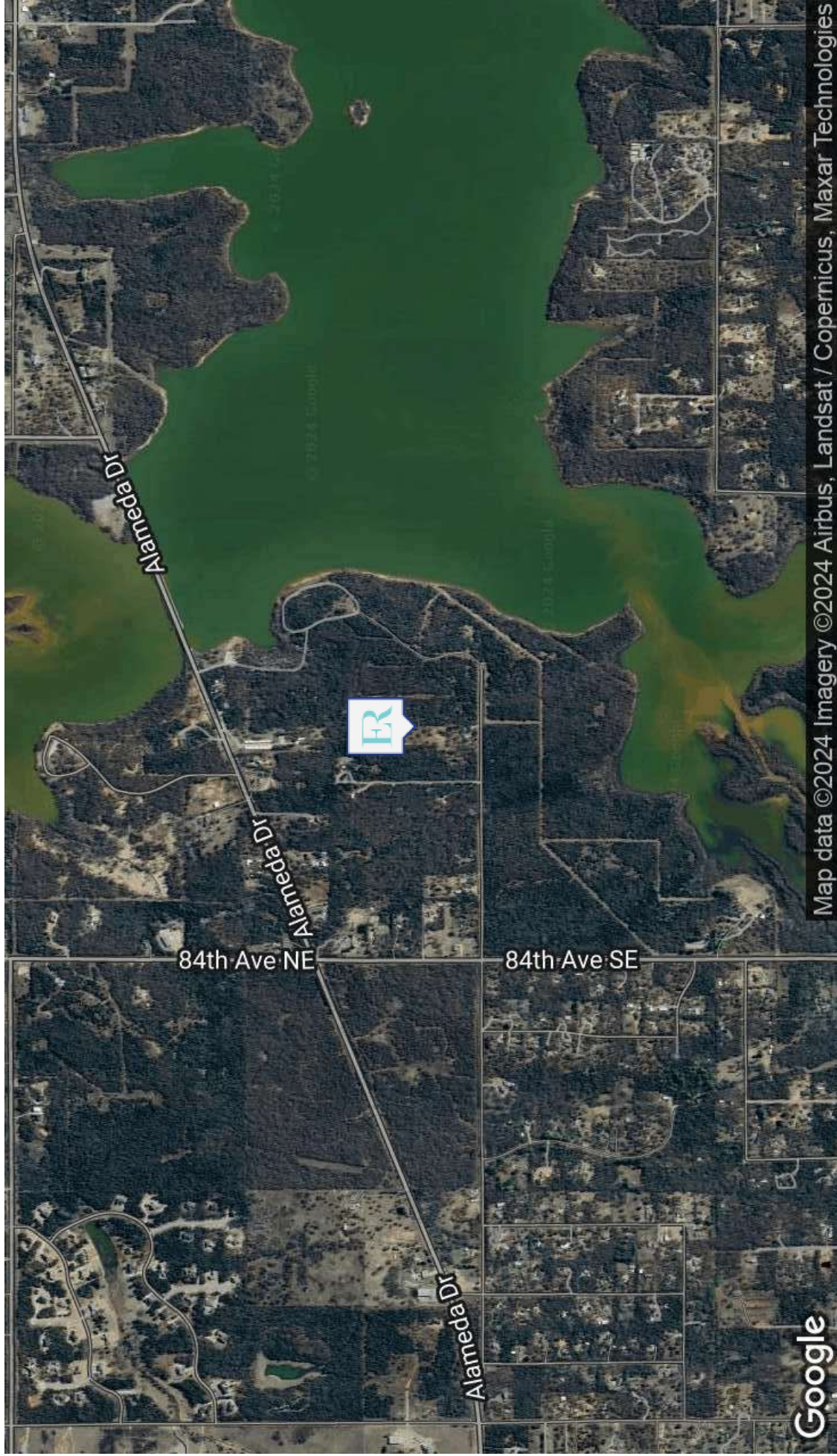
KARINA BALSCHUWEIT

Equity Commercial Realty Advisors, LLC
karinab@equityrealty.net

(405) 412-9253 cell
(405) 640-6167 office



A LAND INVESTMENT OPPORTUNITY
SPORTSMAN PARK DEVELOPMENT
0 REDBUD DR, NORMAN, OK 73026



KARINA BALSCHUWEIT

Equity Commercial Realty Advisors, LLC
karinab@equityrealty.net

(405) 412-9253 cell
(405) 640-6167 office

The information contained herein has been obtained from the Owner and other reliable sources and is offered as an aid for investment analysis. Although deemed reliable information is not guaranteed, and is provided subject to errors, omissions, prior sale or withdrawal. Equity Commercial Realty II, LLC. All rights reserved.

