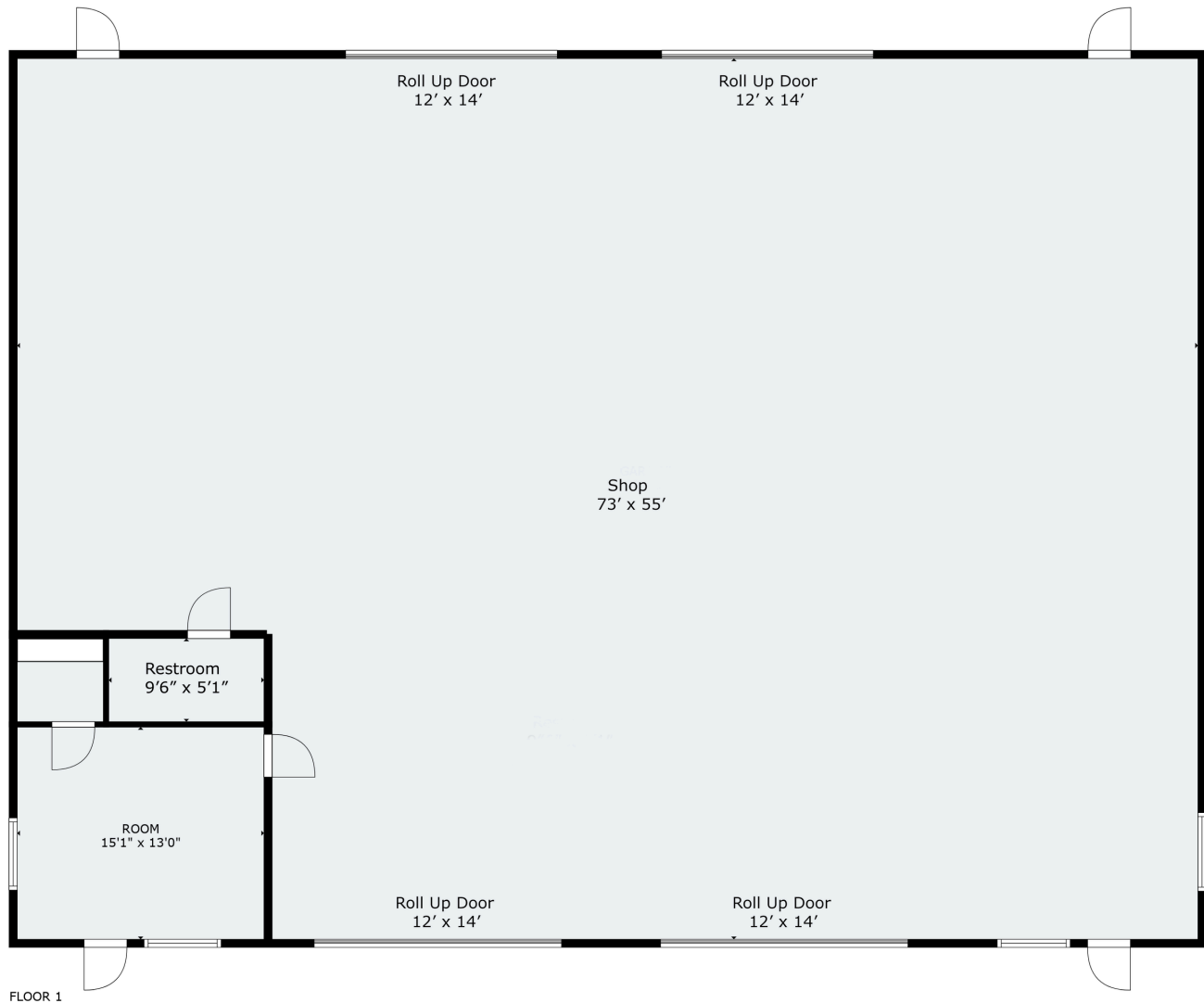


Lone Star Business Park
2036 Seaborn Rd. Bldg. 3
Ponder, TX 76259



COMMERCIAL SPACE FOR LEASE
PONDER, TX

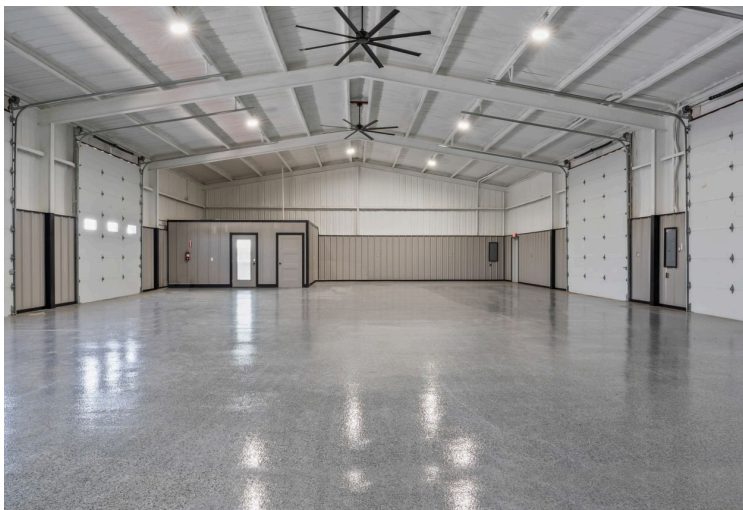


Building 3 Suite A&B

4000 Sq. Ft.

NEWLAND

REAL ESTATE

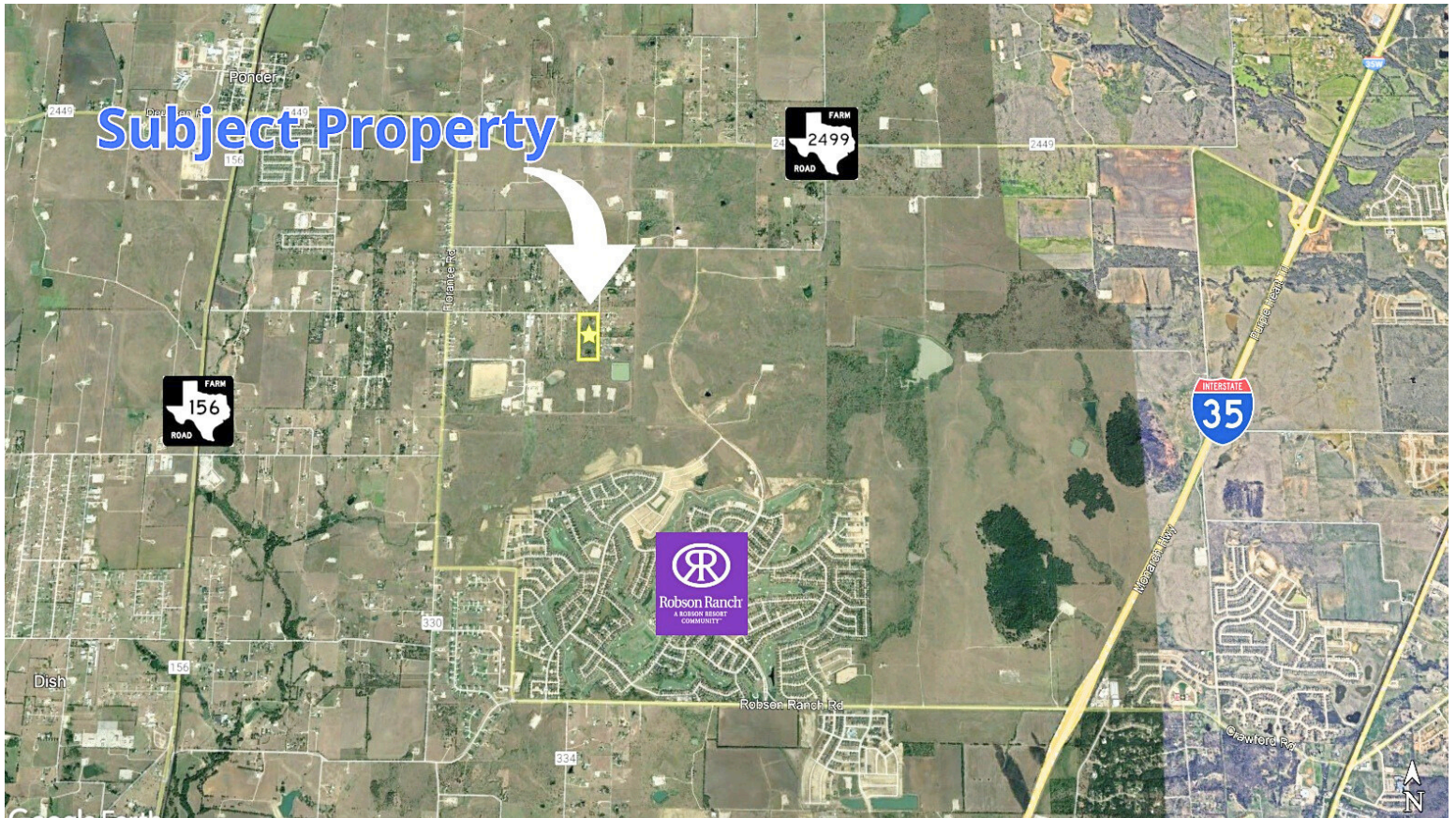


Lone Star Business Park

2036 Seaborn Rd. Bldg. 3, Ste. A&B
Ponder, Texas 76259

Brand new build with YARD for lease in Ponder, TX! Lone Star Business Park is the perfect spot for your commercial business! Building 3 is 4000 Sq. FT. Includes office space, storefront window, and drive-in doors. The fully fenced and gated property has additional rear parking-yard space! Buildings are equipped to handle various uses like fabrication, retail, office use, recreation, & more.

- **\$4250 monthly**
- **Outside City Limits**
- **YARD Space**
- **Drive-In Doors**
- **Store Front Office Space**
- **Individual Electric Meters**
- **\$50 Flat Rate for Water per Month**



Conveniently located near FM 156 and I35W in Ponder, TX.

3 miles to FM 156. 5 Miles to I35W.



Justin Newland

940-594-9882

jnewland@northtexasrealestate.com