

St. Lucie Medical Park Building I  
1871 SE Tiffany Avenue  
Port St. Lucie, FL 34952



**MEDICAL OFFICE SPACE FOR LEASE**

**\$26.00/SF/MG**



**2308 SF Available**



**Property adjacent to the Port St. Lucie  
Medical Center**

John W. Chapman, Broker  
772-631-9168  
[john@ChapmanCommercialRealEstate.com](mailto:john@ChapmanCommercialRealEstate.com)

John McMurry, Sales Associate  
772-204-3754  
[johnm@ChapmanCommercialRealEstate.com](mailto:johnm@ChapmanCommercialRealEstate.com)

Chapman Commercial Real Estate, Inc.  
100 SW Albany Ave., Suite 310  
Stuart, Florida 34994  
[ChapmanCommercialRealEstate.com](http://ChapmanCommercialRealEstate.com)

**PROPERTY  
INFORMATION**

**MEDICAL OFFICE SPACE FOR LEASE**

**1871 SE Tiffany Avenue  
Port St Lucie, FL 34952**

**PROPERTY OVERVIEW:** Beautiful high-end medical office space adjacent to the Port St. Lucie Medical Center. Convenient first floor corner location in a dedicated medical services office building in convenient St. Lucie Medical Park. New build out complete with medical offices / observation rooms outfitted with sinks and amenities. Large open waiting and welcome area with convenient reception desk. This space is 100% turn key and ready for immediate occupancy and operation.

**Suite Number: 110**

**Size: 2308 SF**

**Location: At the corner of SE Tiffany Avenue and Village Green Drive;  
Convenient to Federal Highway**

**Price: \$26.00/SF/MG**



John W. Chapman, Broker  
Chapman Commercial Real Estate, Inc.

**Phone: 772-631-9168**

John McMurry, Sales Associate  
Chapman Commercial Real Estate, Inc.

**Phone: 772-204-3754**

**ChapmanCommercialRealEstate.com**



John W. Chapman, Broker  
Chapman Commercial Real Estate, Inc.

Phone: 772-631-9168

John McMurry, Sales Associate  
Chapman Commercial Real Estate, Inc.

Phone: 772-204-3754

[ChapmanCommercialRealEstate.com](http://ChapmanCommercialRealEstate.com)



John W. Chapman, Broker  
Chapman Commercial Real Estate, Inc.

**Phone: 772-631-9168**

John McMurry, Sales Associate  
Chapman Commercial Real Estate, Inc.

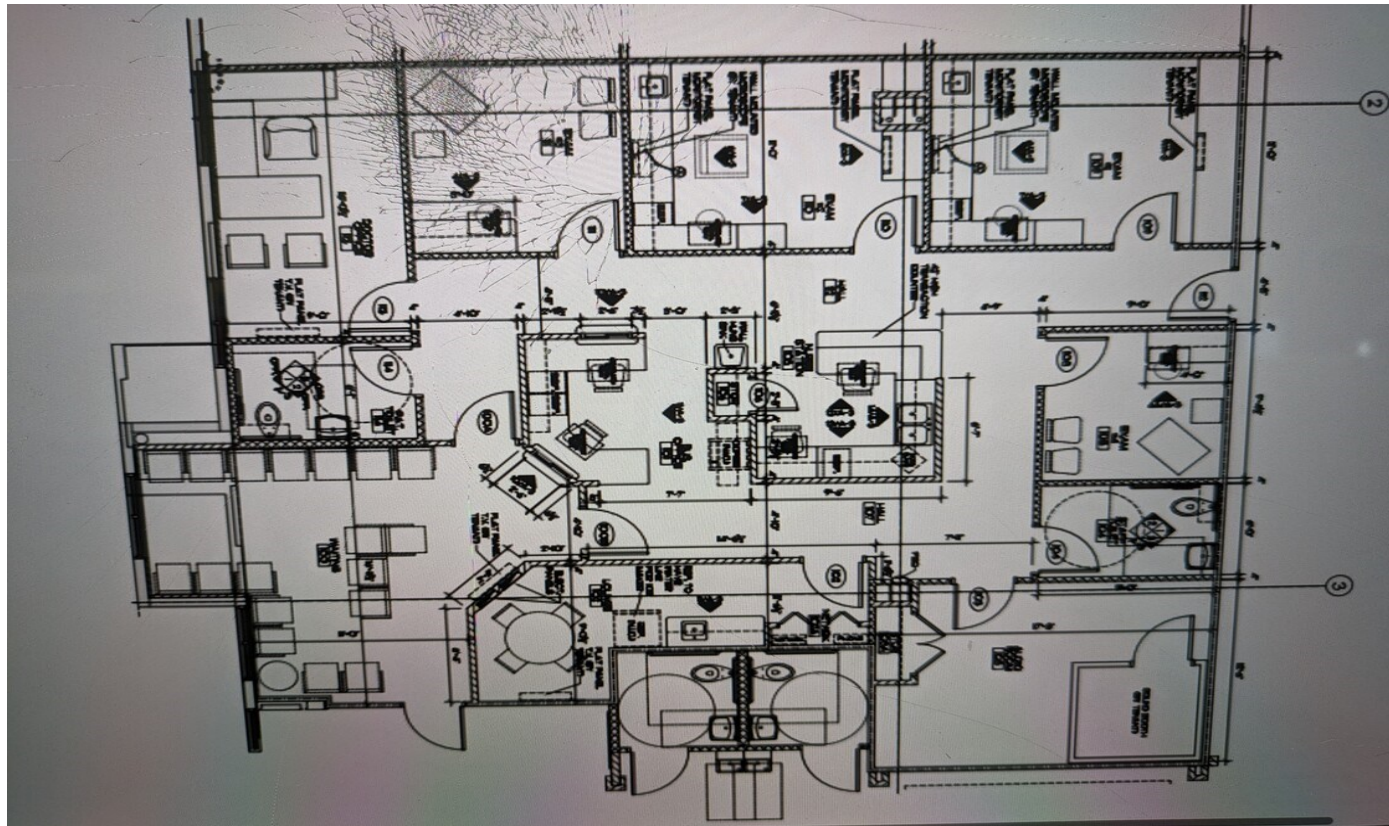
**Phone: 772-204-3754**

**ChapmanCommercialRealEstate.com**

# FLOOR PLAN

# MEDICAL OFFICE SPACE FOR LEASE

**1871 SE Tiffany Avenue**  
**Port St. Lucie, FL 34986**



John W. Chapman, Broker  
Chapman Commercial Real Estate, Inc.

**Phone: 772-631-9168**

John McMurry, Sales Associate  
Chapman Commercial Real Estate, Inc.

**Phone: 772-204-3754**



[ChapmanCommercialRealEstate.com](http://ChapmanCommercialRealEstate.com)

## Aerial View with Nearby Businesses



John W. Chapman, Broker  
Chapman Commercial Real Estate, Inc.

**Phone: 772-631-9168**

John McMurry, Sales Associate  
Chapman Commercial Real Estate, Inc.

**Phone: 772-204-3754**



**ChapmanCommercialRealEstate.com**