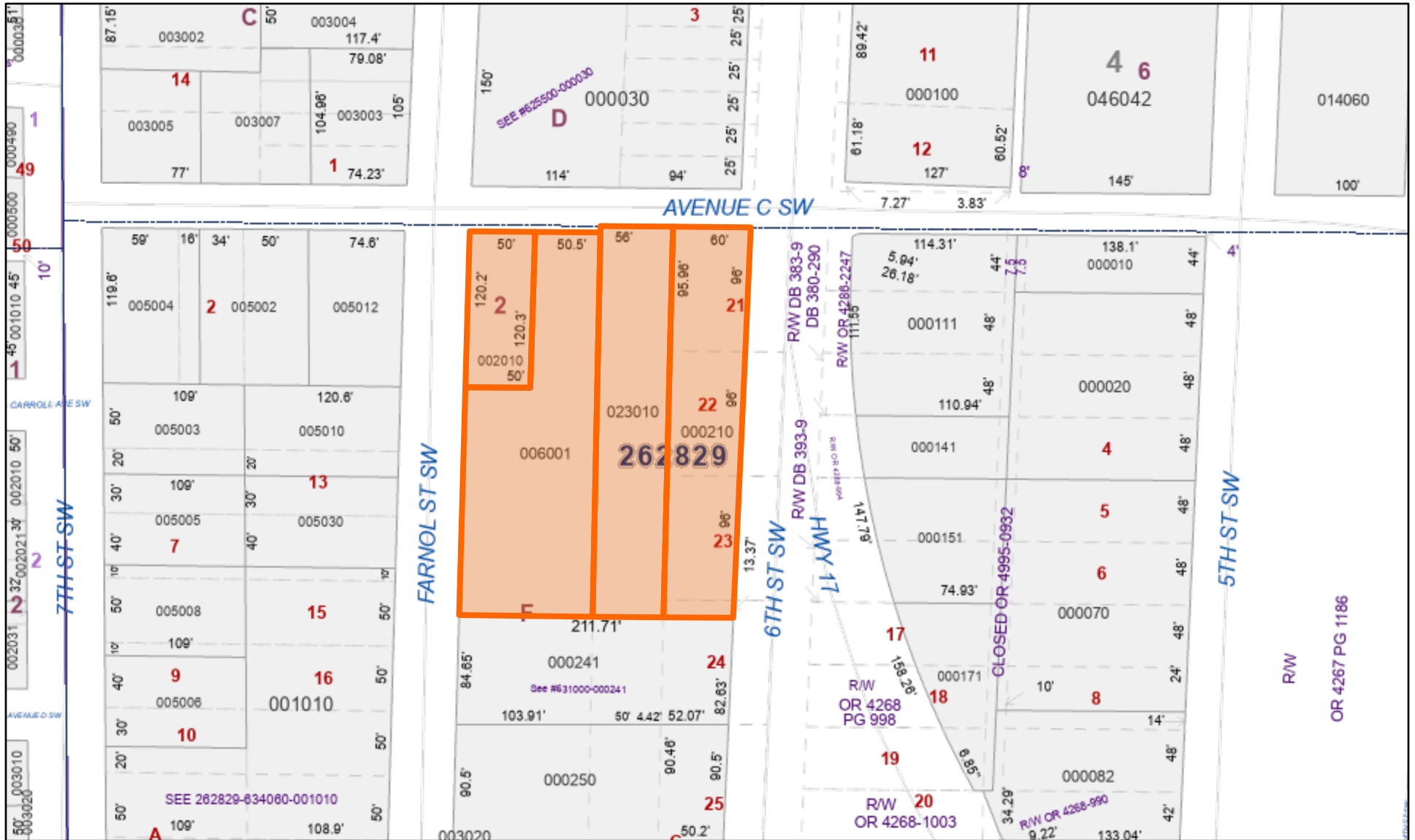
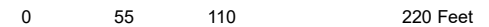


# 4 Parcels 301 6th StSW



- PLSS Townships
- PLSS Sections
- PLSS Boundaries
- Gov't Lots
- Roads
- Water lines
- Lots
- Lot and Block Text
- Blocks
- Tiers
- Dimensions\_ParcelFabric
- Dimensions\_CartoDist
- Dimensions\_LabelText Parcels
- Misc Text
- Railroads
- Arrows
- DOR\_CD
- 8050; 9350; 9360
- <all other values>
- Surrounding Counties



All maps are worksheets used for illustrative purposes only, they are not surveys. The Polk County Property Appraiser assumes no responsibility for errors in the information and does not guarantee the data is free from error or inaccuracy. The information is provided "as is".



Marsha M. Faux, CFA, ASA  
 Property Appraiser  
 Polk County, Florida  
 October 16, 2024

