

FOR LEASE

2610

±1,116-±8,745 RSF Office Suites

FOR LEASE

2610 Crow Canyon Road

SAN RAMON, CA



OFFICE 7 MEDICAL use permitted

PROFESSIONALLY managed and maintained office building


CLOSE proximity to I-680

WALKING distance to retail, restaurants & shops

AMPLE parking on-site

AVAILABILITIES

Suite 150 ±1,116 SF

Suite 110 ±2,191 SF 

Suite 200 ±7,720 SF

3rd Floor up to ±8,745 SF

KIDDER.COM

This information supplied herein is from sources we deem reliable. It is provided without any representation, warranty, or guarantee, expressed or implied as to its accuracy. Prospective Buyer or Tenant should conduct an independent investigation and verification of all matters deemed to be material, including, but not limited to, statements of income and expenses. Consult your attorney, accountant, or other professional advisor.

 **Kidder Mathews**

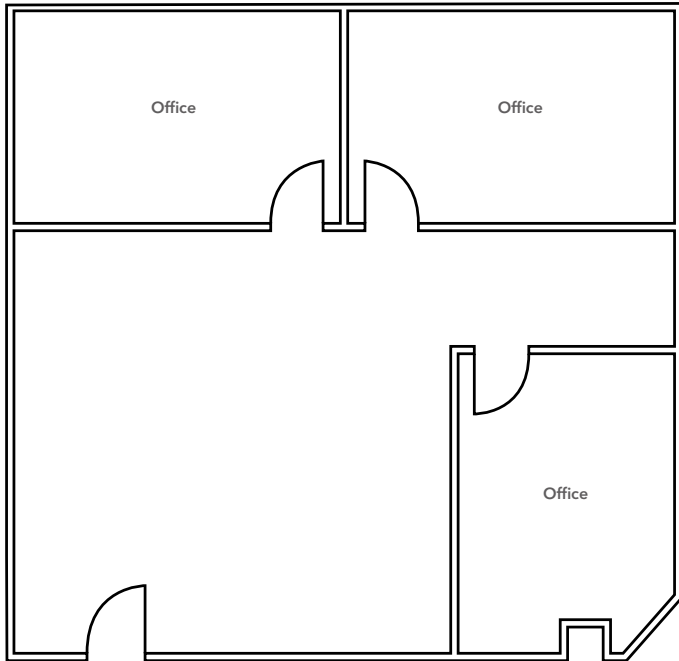
SIMON VOGT, SIOR
925.905.1112
simon.vogt@kidder.com
LIC N° 01879314

FOR LEASE

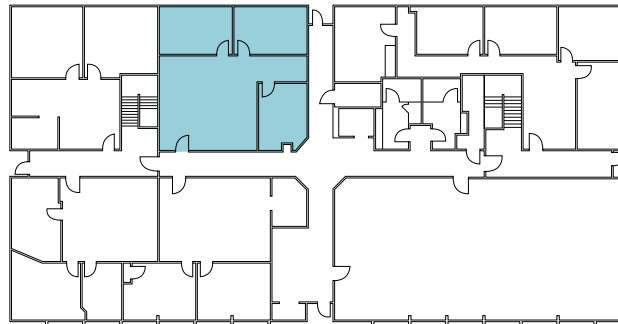
2610 Crow Canyon Road

SAN RAMON, CA

Suite 150



FIRST FLOOR



±1,116 SF

OPEN office area

PRIVATE offices

KIDDER.COM

This information supplied herein is from sources we deem reliable. It is provided without any representation, warranty, or guarantee, expressed or implied as to its accuracy. Prospective Buyer or Tenant should conduct an independent investigation and verification of all matters deemed to be material, including, but not limited to, statements of income and expenses. Consult your attorney, accountant, or other professional advisor.

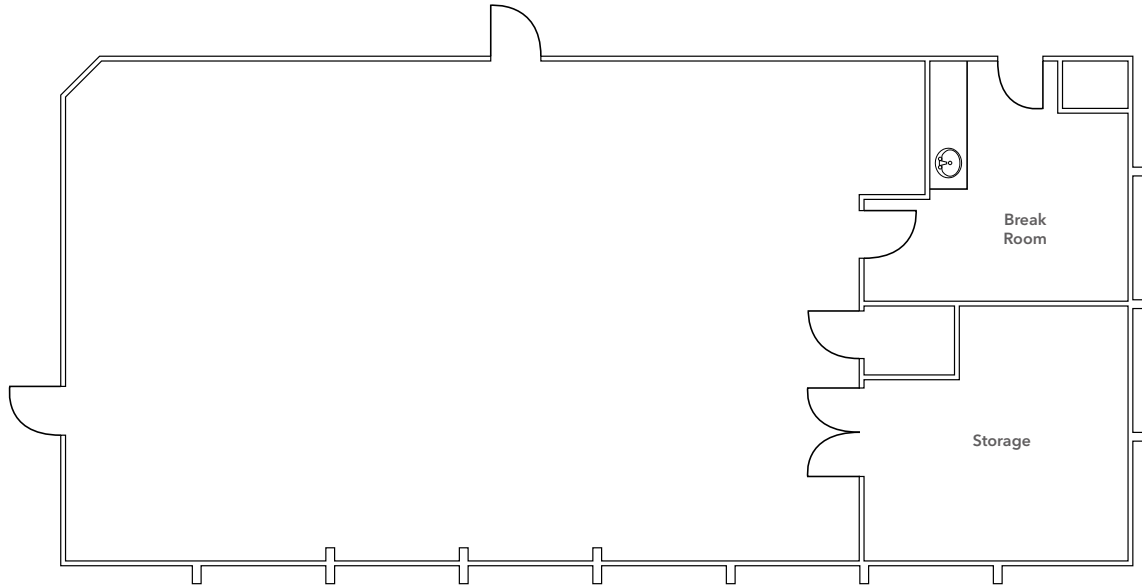
km Kidder Mathews

FOR LEASE

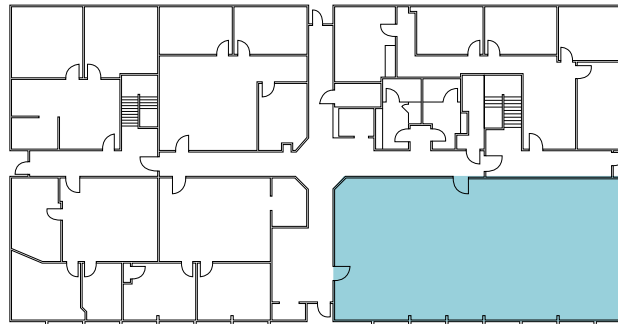
2610 Crow Canyon Road

SAN RAMON, CA

Suite 110



FIRST FLOOR



±2,191 SF

OPEN area

STORAGE room

BREAK room

SIMON VOGT, SIOR

925.905.1112

simon.vogt@kidder.com

LIC N° 01879314

KIDDER.COM

This information supplied herein is from sources we deem reliable. It is provided without any representation, warranty, or guarantee, expressed or implied as to its accuracy. Prospective Buyer or Tenant should conduct an independent investigation and verification of all matters deemed to be material, including, but not limited to, statements of income and expenses. Consult your attorney, accountant, or other professional advisor.

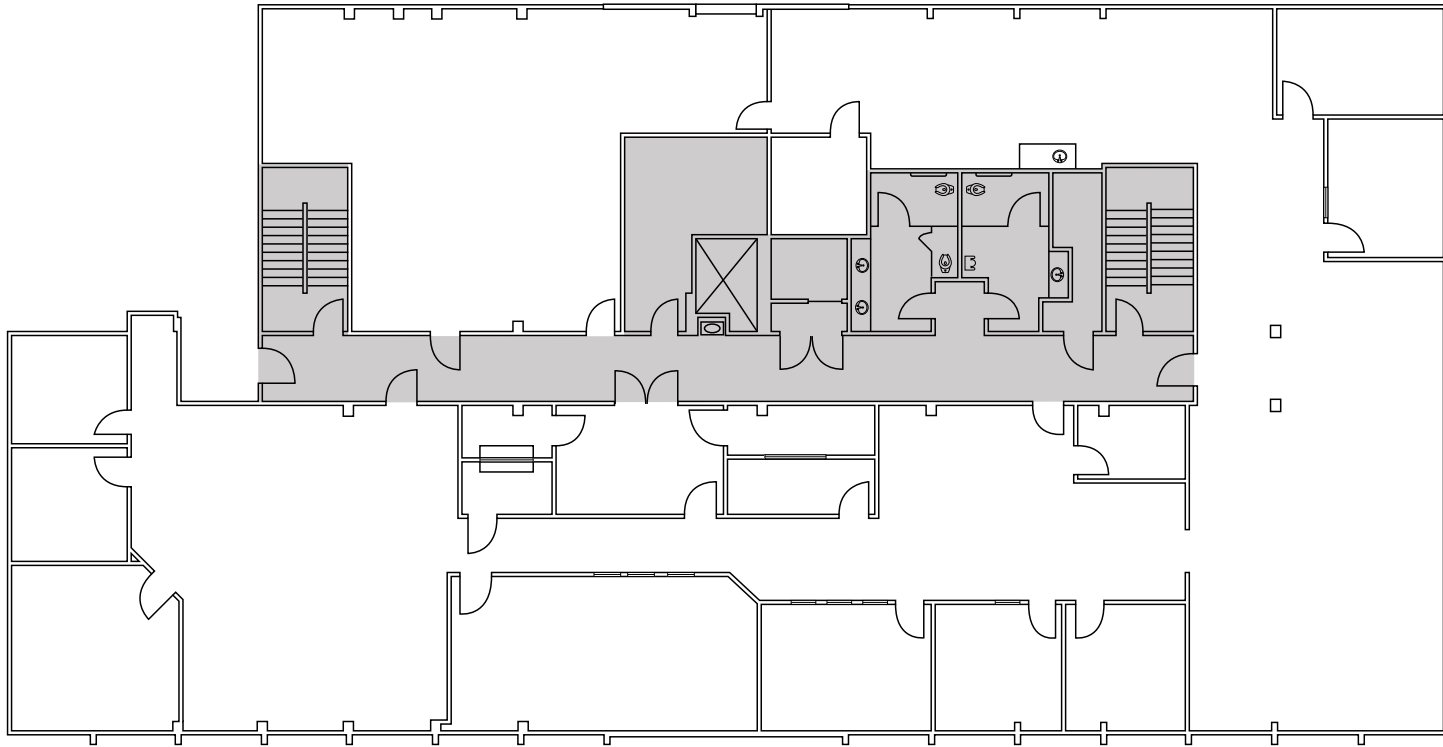
km Kidder
Mathews

FOR LEASE

2610 Crow Canyon Road

SAN RAMON, CA

Suite 200



±7,720 SF

OPEN office area

PRIVATE offices

SIMON VOGT, SIOR

925.905.1112

simon.vogt@kidder.com

LIC N° 01879314

KIDDER.COM

This information supplied herein is from sources we deem reliable. It is provided without any representation, warranty, or guarantee, expressed or implied as to its accuracy. Prospective Buyer or Tenant should conduct an independent investigation and verification of all matters deemed to be material, including, but not limited to, statements of income and expenses. Consult your attorney, accountant, or other professional advisor.

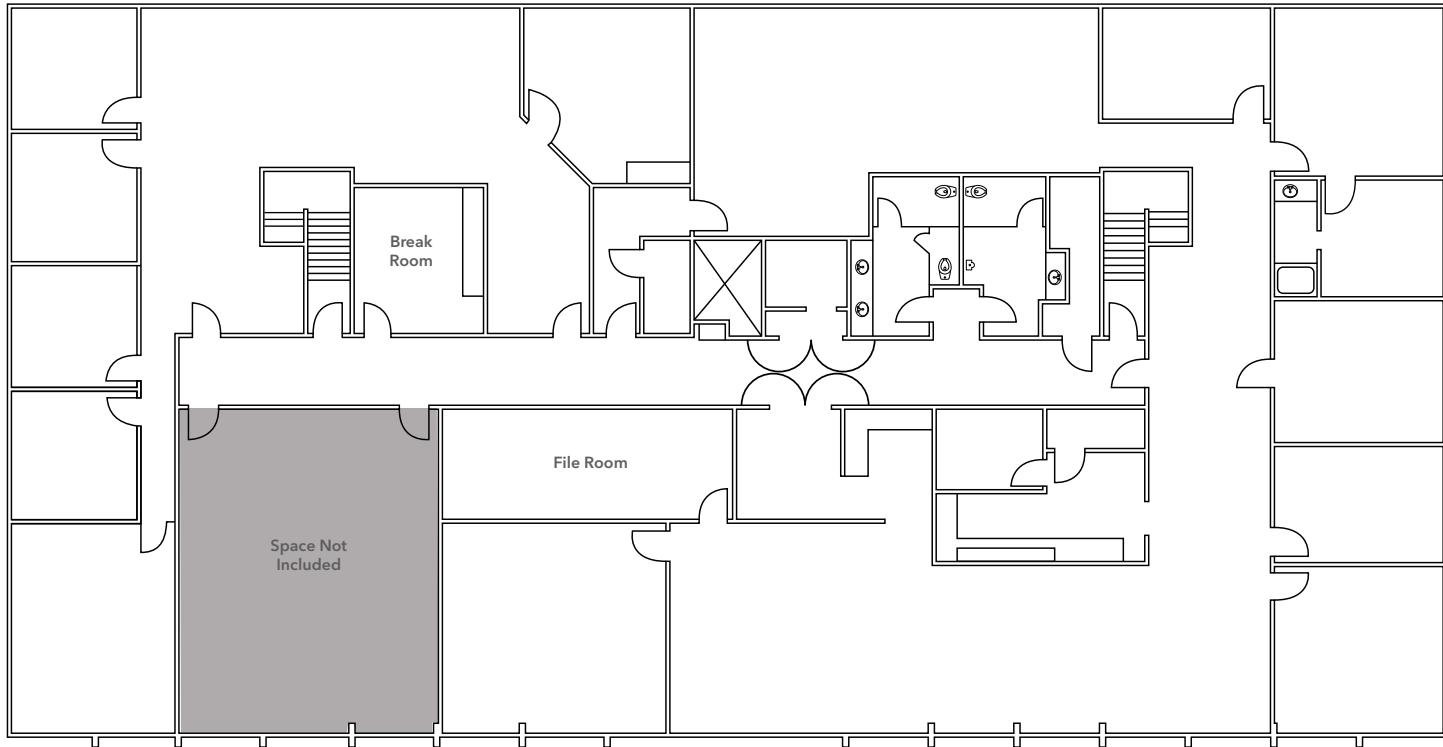
km Kidder
Mathews

FOR LEASE

2610 Crow Canyon Road

SAN RAMON, CA

Third Floor



UP TO ±8,745 SF

OPEN area

STORAGE room

BREAK room

MULTIPLE configurations available

SIMON VOGT, SIOR

925.905.1112

simon.vogt@kidder.com

LIC N° 01879314

KIDDER.COM

This information supplied herein is from sources we deem reliable. It is provided without any representation, warranty, or guarantee, expressed or implied as to its accuracy. Prospective Buyer or Tenant should conduct an independent investigation and verification of all matters deemed to be material, including, but not limited to, statements of income and expenses. Consult your attorney, accountant, or other professional advisor.



FOR LEASE

2610 Crow Canyon Road

SAN RAMON, CA



KIDDER.COM

This information supplied herein is from sources we deem reliable. It is provided without any representation, warranty, or guarantee, expressed or implied as to its accuracy. Prospective Buyer or Tenant should conduct an independent investigation and verification of all matters deemed to be material, including, but not limited to, statements of income and expenses. Consult your attorney, accountant, or other professional advisor.

km Kidder Mathews