

PRIME OFFICE SPACE
2x SUITES 2,935 SF EACH
15051 S Tamiami Trail, Fort Myers, FL 33908

Boback
Commercial
Group
Commercial Sales & Leasing



SUBLEASE: Negotiable

ABOUT THE PROPERTY

Suite 201: 2,935± SF of prime office space available for Sublease April 2024 to October 31, 2026.

Suite 205: 2,935± SF of prime office space available for Sublease December 2023 to October 31, 2026

PROPERTY FEATURES

- ▣ Suite 201 available from April 2024, Suite 205 available from Dec 2023
- ▣ Sublease Term: Thru Oct. 31, 2026
- ▣ Furniture, Fixtures & Equipment included
- ▣ Land Size: 2.06± Acres
- ▣ Zoning: C-1A (Lee County)
- ▣ Year Built: 1997
- ▣ Parking Ratio: 3.36/1,000 SF (72 parking spaces)
- ▣ Traffic Count: 65,500 AADT (2021)
- ▣ Parcel ID: 36-45-24-07-00000.0030



JIM BOBACK, CCIM
Broker/Owner C 239-565-2616
O 239-466-7770
JB@BobackCommercialGroup.com
www.BobackCommercialGroup.com

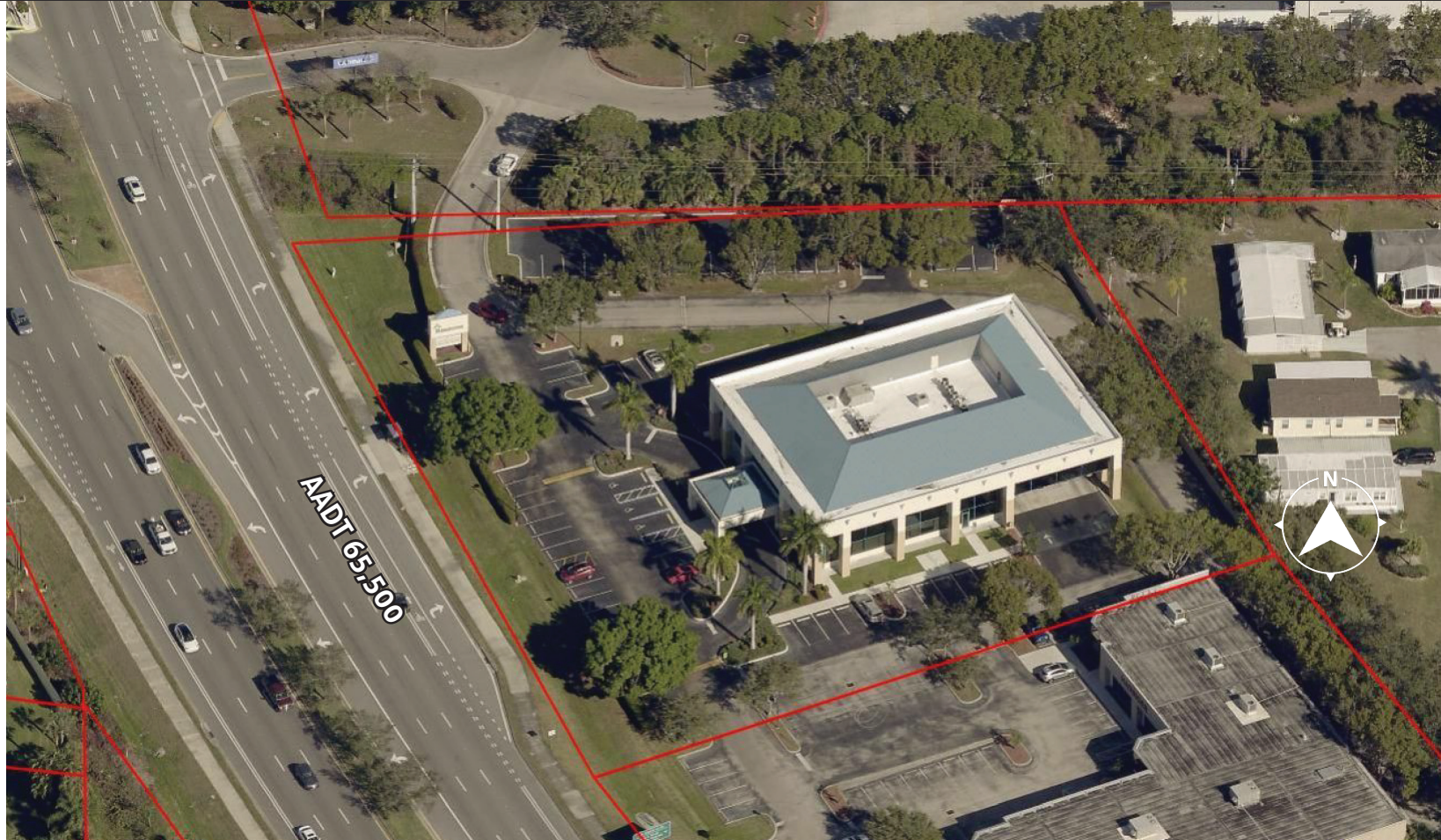
LUKE PATERSON
Swearingen Realty Group
214-365-2732
lukep@swearngen.com

MATT PATERSON
Swearingen Realty Group
214-365-2720
mattp@swearngen.com

This document has been prepared by Boback Commercial Group for advertising and general information only. Boback Commercial Group makes no guarantees, representations or warranties of any kind, expressed or implied, regarding the information including, but not limited to, warranties of content, accuracy and reliability. Any interested party should undertake their own inquiries as to the accuracy of the information.

PRIME OFFICE SPACE
2x SUITES 2,935 SF EACH
15051 S Tamiami Trail, Fort Myers, FL 33908

Boback
Commercial
Group
Commercial Sales & Leasing



2ND FLOOR HIGHLIGHTS

- ▣ Partially Open Floor Plan
- ▣ Private Offices, Executive-Level Office
- ▣ Open Area with Workstations
- ▣ Conference Rooms
- ▣ Breakroom

PROPERTY HIGHLIGHTS

- ▣ Security System
- ▣ Signage
- ▣ Bus Line
- ▣ Banking

JIM BOBACK, CCIM
Broker/Owner C 239-565-2616
O 239-466-7770
JB@BobackCommercialGroup.com
www.BobackCommercialGroup.com

LUKE PATERSON
Swearingen Realty Group
214-365-2732
lukep@swearngen.com

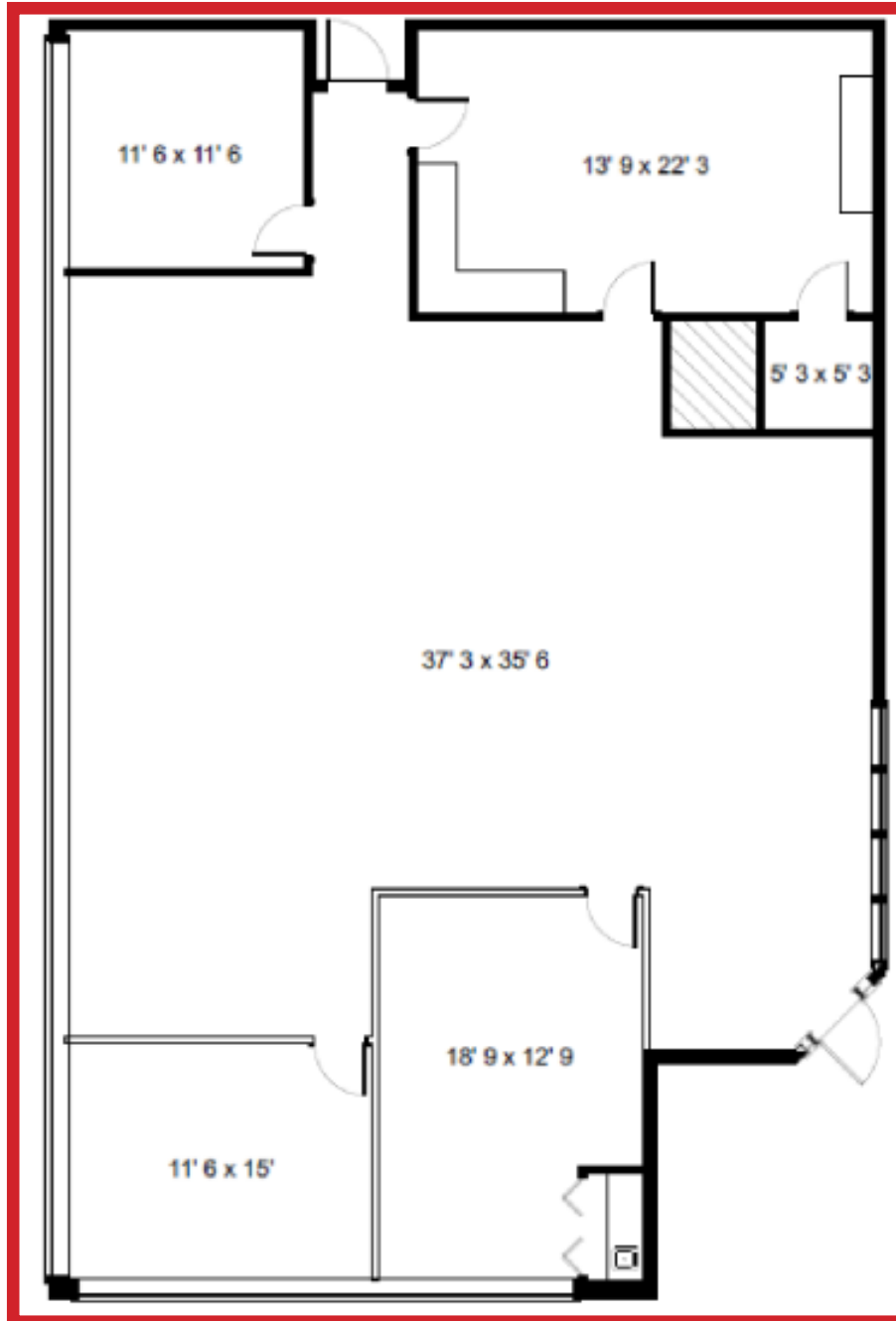
MATT PATERSON
Swearingen Realty Group
214-365-2720
mattp@swearngen.com

This document has been prepared by Boback Commercial Group for advertising and general information only. Boback Commercial Group makes no guarantees, representations or warranties of any kind, expressed or implied, regarding the information including, but not limited to, warranties of content, accuracy and reliability. Any interested party should undertake their own inquiries as to the accuracy of the information.

PRIME OFFICE SPACE
2x SUITES 2,935 SF EACH
15051 S Tamiami Trail, Fort Myers, FL 33908

Boback
Commercial
Group
Commercial Sales & Leasing

SUITE 201 FLOOR PLAN



JIM BOBACK, CCIM
Broker/Owner C 239-565-2616
O 239-466-7770
JB@BobackCommercialGroup.com
www.BobackCommercialGroup.com

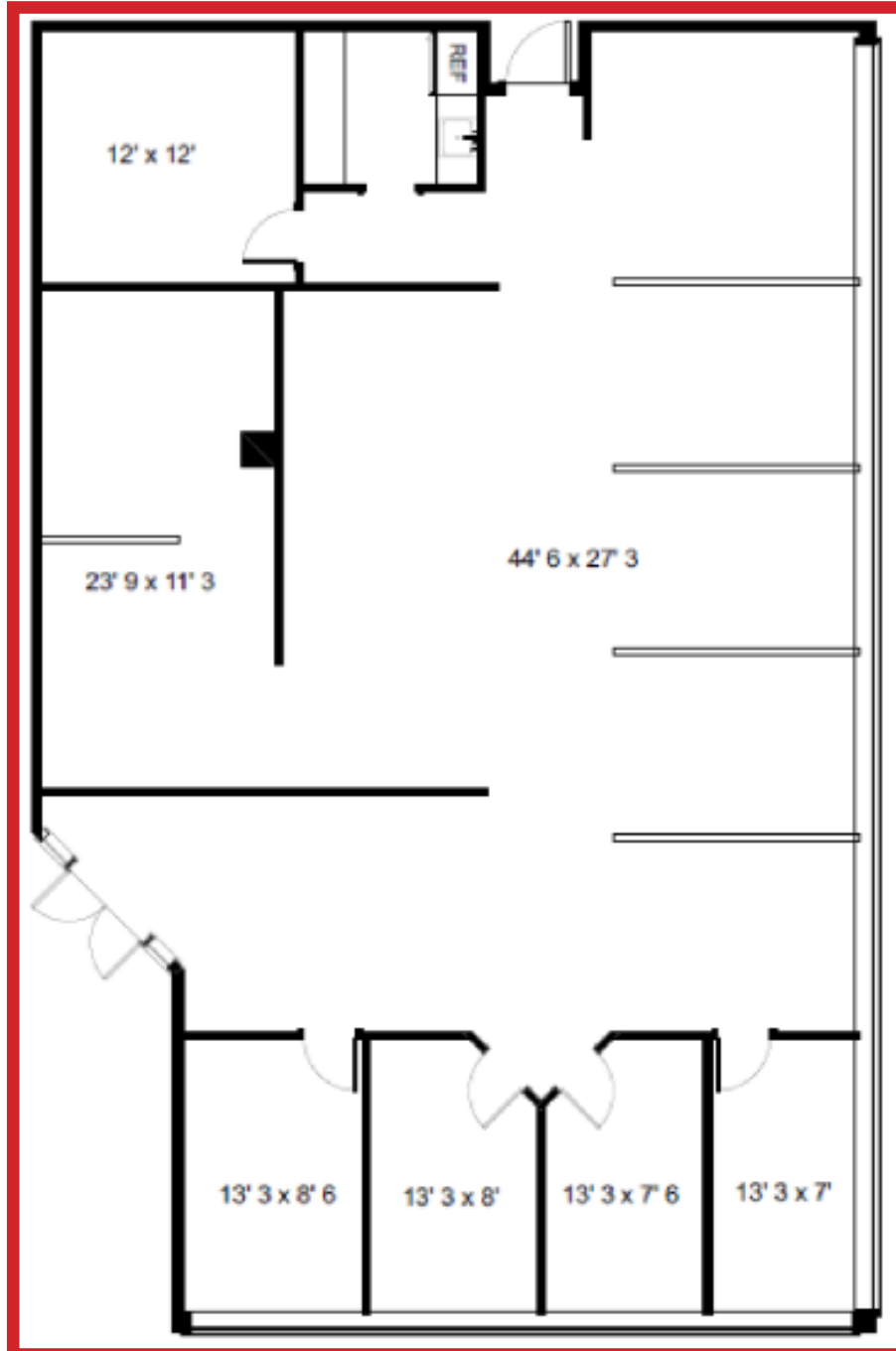
LUKE PATERSON
Swearingen Realty Group
214-365-2732
lukep@swearngen.com

MATT PATERSON
Swearingen Realty Group
214-365-2720
mattp@swearngen.com

This document has been prepared by Boback Commercial Group for advertising and general information only. Boback Commercial Group makes no guarantees, representations or warranties of any kind, expressed or implied, regarding the information including, but not limited to, warranties of content, accuracy and reliability. Any interested party should undertake their own inquiries as to the accuracy of the information.

PRIME OFFICE SPACE
2x SUITES 2,935 SF EACH
15051 S Tamiami Trail, Fort Myers, FL 33908

SUITE 205 FLOOR PLAN



JIM BOBACK, CCIM
Broker/Owner C 239-565-2616
O 239-466-7770
JB@BobackCommercialGroup.com
www.BobackCommercialGroup.com

LUKE PATERSON
Swearingen Realty Group
214-365-2732
lukep@swearngen.com

MATT PATERSON
Swearingen Realty Group
214-365-2720
mattp@swearngen.com

PRIME OFFICE SPACE
2x SUITES 2,935 SF EACH
15051 S Tamiami Trail, Fort Myers, FL 33908

Boback
Commercial
Group
Commercial Sales & Leasing

2ND FLOOR PHOTOS



CONFERENCE ROOMS



INTERIOR CUBICLE SPACE

JIM BOBACK, CCIM
Broker/Owner C 239-565-2616
O 239-466-7770
JB@BobackCommercialGroup.com
www.BobackCommercialGroup.com

LUKE PATERSON
Swearingen Realty Group
214-365-2732
lukep@swearngen.com

MATT PATERSON
Swearingen Realty Group
214-365-2720
mattp@swearngen.com