

CVCB



CENTRAL
VALLEY
COMMERCIAL
BROKERS, INC

FOR SALE

1777 S. Comanche Dr.

APN: 189-340-51 & 189-340-54



Property Details

- Offered at \$2.8 Million
- Total land: 22.6 Acres
- Smaller parcel options: 3 Acres, 10 Acres, or 9 Acres
- 3 Acres - \$1.1 Million
- 10 Acres - \$1.2 Million
- 9 Acres - \$1.1 Million
- M-2 Zoning
- Master plan approved by the city of Arvin
- Gas station plans approved
- CEQA – complete
- Phase 1 & 2 – clean
- Traffic Study - complete



MARCUS DUARTE • Agent/Associate •
MDuarte@cvcbrokers.com
CA RE #01972531 • 661.404.4090 Office •
930 Truxtun Ave., Suite 101 Bakersfield, CA 93301

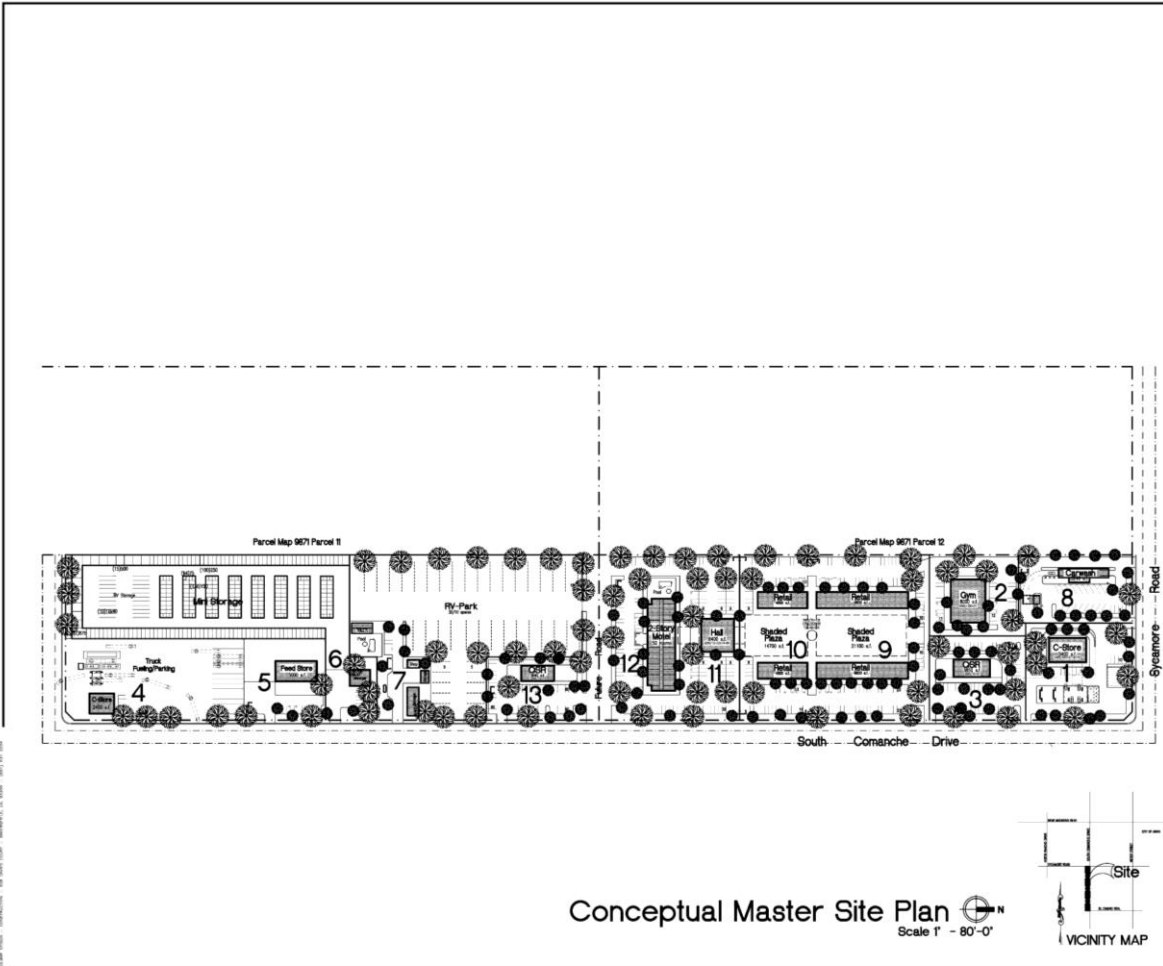
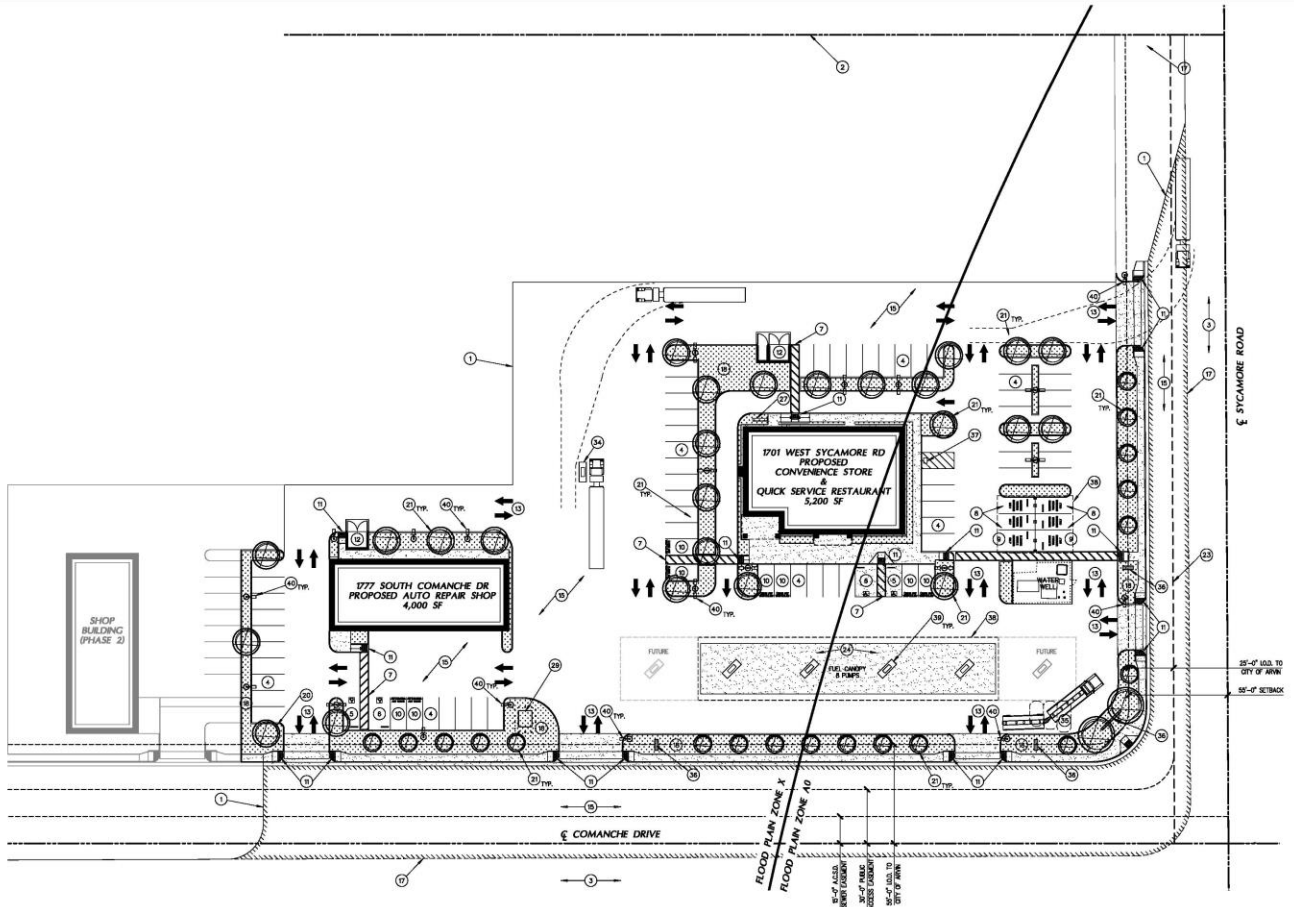
The information contained herein may have been obtained from sources other than CVCB. We have not verified such information and make no guarantees, warranties, or representations about such information. It is your responsibility to independently confirm its accuracy and completeness prior to purchasing/leasing the property.



Welcome to Arvin

Arvin is a growing market in Kern County with strong investment potential. Its population of about 19,600 is supported by a regional base of over 900,000, and its proximity to Bakersfield and major transportation routes is driving steady residential growth. Limited commercial space has created high demand, offering a rare opportunity to establish a strong presence in an underserved area where new retail and services are needed.

The city's young, family-oriented population supports consistent, long-term demand for everyday services like retail, healthcare, and education. Combined with steady growth and migration to more affordable Central Valley areas, Arvin presents a compelling opportunity for investors looking to enter early, scale, and benefit from future appreciation.



Conceptual Master Site Plan
Scale 1" = 80'-0"

Project:
2017 Corner
Comanche Dr & Sycamore Rd
Avila, CA

Consultant:

GILMAR Construction, Inc.
Design-Construction Services

Client: S. Jones
2-1987

808 DAVES CT
BAYVIEW, CA 94026
(415) 831-2244
www.gilmarcorp.com

CONCEPTUAL MASTER SITE PLAN

DATE	BY	REVISION

DATE: 11.8.20 SHEET: SK-1

FOR SALE

1777 S Comanche Dr.

Aerial Map of Arvin



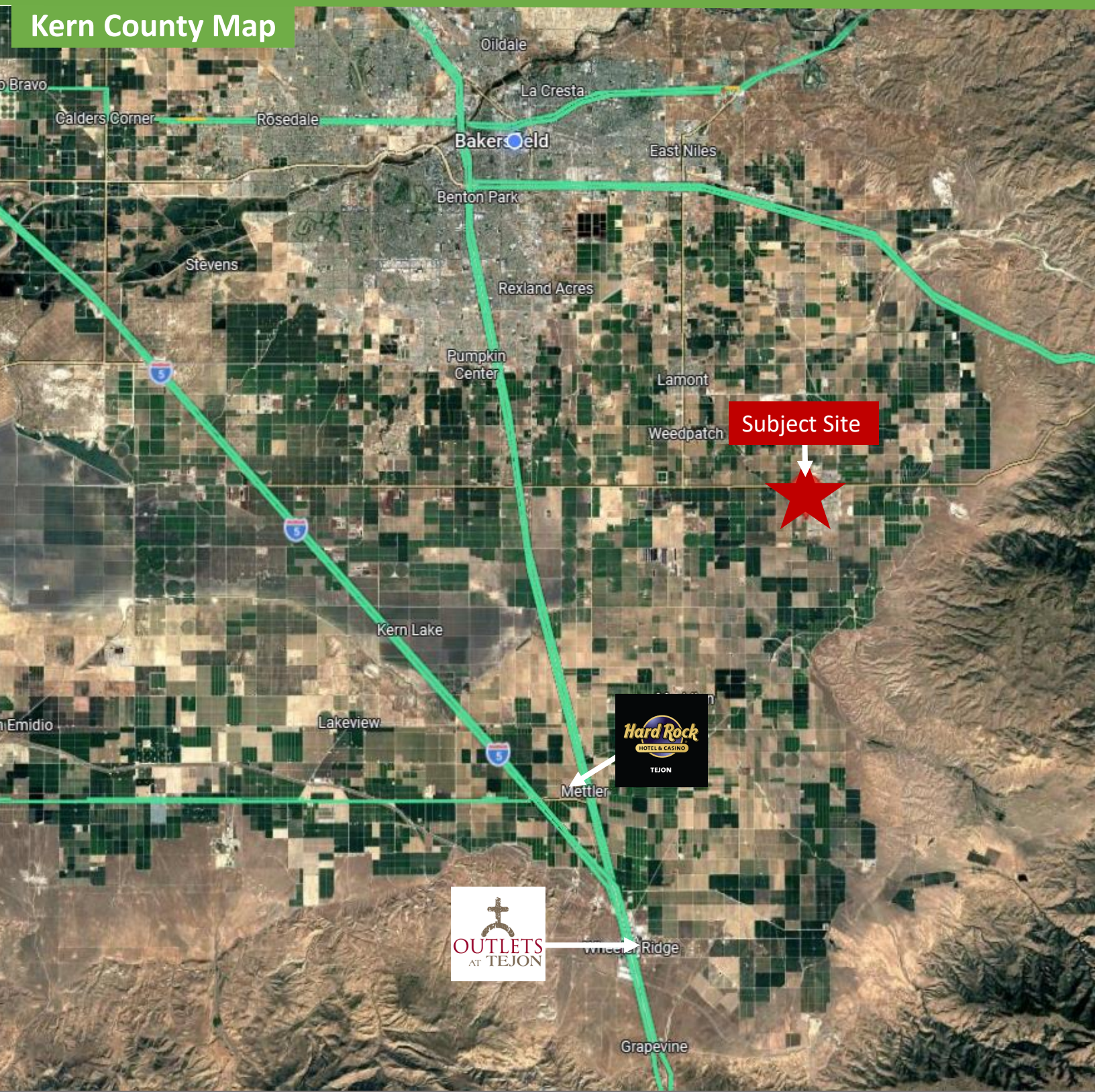
MARCUS DUARTE • Agent/Associate •
MDuarte@cvcbrokers.com
CA RE #01972531 • 661.404.4090 Office •
930 Truxtun Ave., Suite 101 Bakersfield, CA 93301

The information contained herein may have been obtained from sources other than CVCB. We have not verified such information and make no guarantees, warranties, or representations about such information. It is your responsibility to independently confirm its accuracy and completeness prior to purchasing/leasing the property.

FOR SALE

1777 S Comanche Dr.

Kern County Map



MARCUS DUARTE • Agent/Associate •
MDuarte@cvcbrokers.com
CA RE #01972531 • 661.404.4090 Office •
930 Truxtun Ave., Suite 101 Bakersfield, CA 93301

The information contained herein may have been obtained from sources other than CVCB. We have not verified such information and make no guarantees, warranties, or representations about such information. It is your responsibility to independently confirm its accuracy and completeness prior to purchasing/leasing the property.