



Flex Office/ Warehouse For Sublease \$10.20 PSF, Gross

Jack Higgins

Senior Vice President
+1 816 556 1170
jack.higgins@colliers.com

Colliers Kansas City

4520 Main Street, Suite 1000
Kansas City, Missouri 64111
+1 816 531 5303
colliers.com/kansascity

11021 Kaw Drive Edwardsville, Kansas

- Building size: 6,000 SF
 - Office area: 1,275± SF
 - Bonus mezzanine storage
- Clear height: 13'5"-15'5"
- Loading: two 14' drive-in doors
- Freestanding building
- Sublease through March 31, 2028

11021 Kaw Drive Property Photos

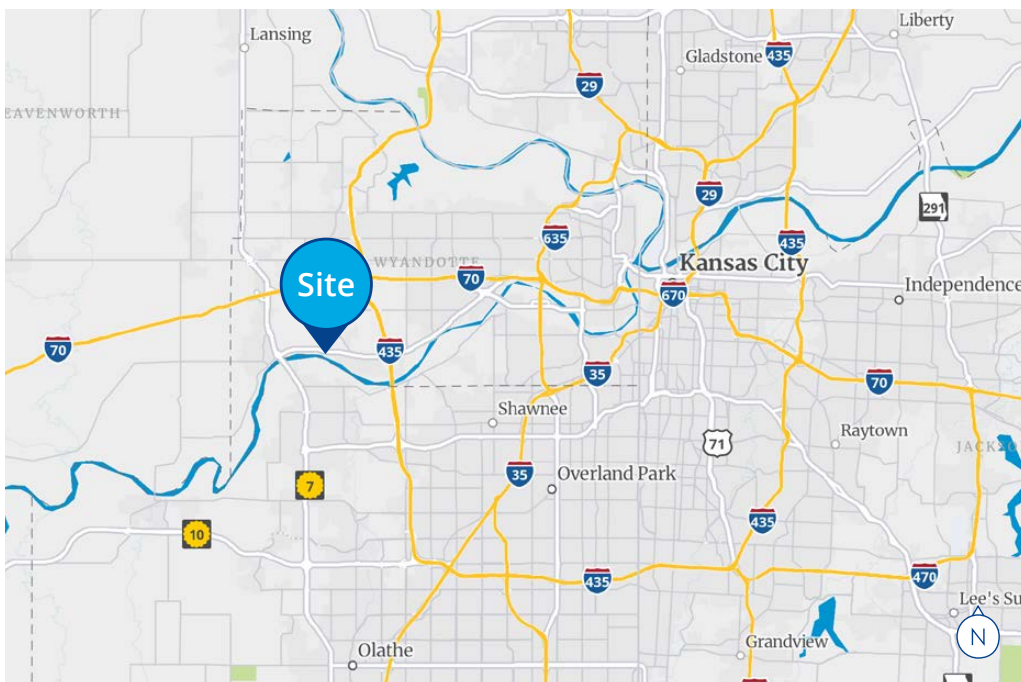
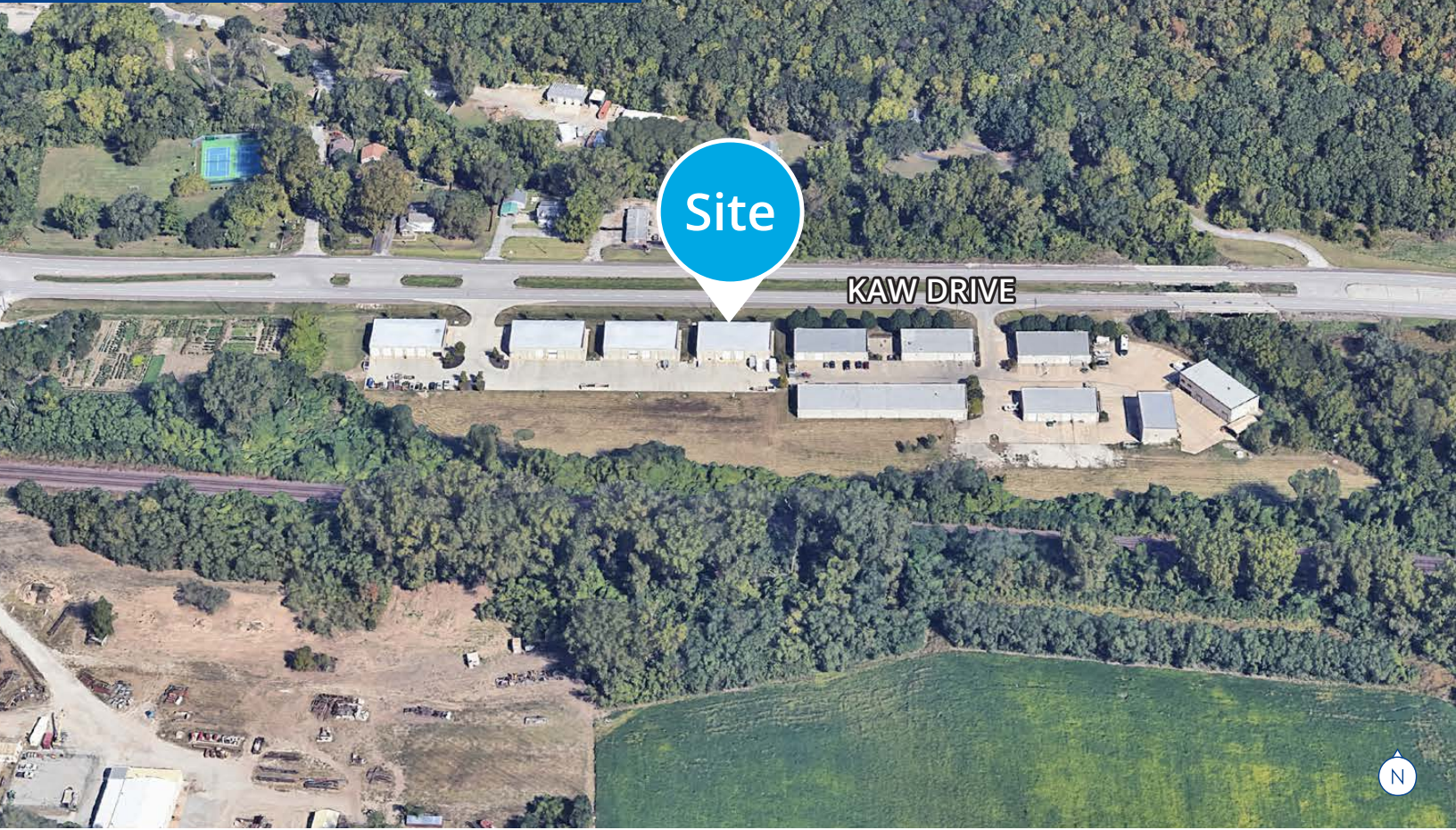
Exterior



Interior



11021 Kaw Drive For Sublease



This document has been prepared by Colliers for advertising and general information only. Colliers makes no guarantees, representations or warranties of any kind, expressed or implied, regarding the information including, but not limited to, warranties of content, accuracy and reliability. Any interested party should undertake their own inquiries as to the accuracy of the information. Colliers excludes unequivocally all inferred or implied terms, conditions and warranties arising out of this document and excludes all liability for loss and damages arising there from. This publication is the copyrighted property of Colliers and /or its licensor(s). © 2024. All rights reserved. This communication is not intended to cause or induce breach of an existing listing agreement.

Jack Higgins

Senior Vice President
+1 816 556 1170
jack.higgins@colliers.com

Colliers Kansas City

4520 Main Street, Suite 1000
Kansas City, MO 64111
+1 816 531 5303
colliers.com/kansascity

